

U.S. Bankruptcy Court - Western District of New York

Case Filing Report

Month Ending November 30, 2011

Report # 1

Page 1 of 2

		Cases Filed 2010	Cases Filed 2011	% change same month	% change YTD	Chapter 7			Chapter 13			Chapter 11	Ch. 12 & 15
						¹ Non-Bus.	² Business	Total Ch.7	¹ Non-Bus.	² Business	Total Ch.13		
Jan.	Buffalo	350	281	-19.7%	-19.7%	162	3	165	113	1	114	2	0
	Rochester	190	153	-19.5%	-19.5%	88	10	98	54	1	55	0	0
	WDNY Total Month	540	434	-19.6%	-19.6%	250	13	263	167	2	169	2	0
	WDNY Total YTD	540	434	-19.6%	-19.6%	250	13	263	167	2	169	2	0
Feb.	Buffalo	368	364	-1.1%	-10.2%	266	3	269	92	0	92	2	1
	Rochester	198	197	-0.5%	-9.8%	125	9	134	58	4	62	1	0
	WDNY Total Month	566	561	-0.9%	-10.0%	391	12	403	150	4	154	3	1
	WDNY Total YTD	1,106	995	-10.0%	-10.0%	641	25	666	317	6	323	5	1
Mar.	Buffalo	619	480	-22.5%	-15.9%	380	4	384	93	2	95	0	1
	Rochester	332	293	-11.7%	-10.7%	211	15	226	60	5	65	1	1
	WDNY Total Month	951	773	-18.7%	-14.0%	591	19	610	153	7	160	1	2
	WDNY Total YTD	2,057	1,768	-14.0%	-14.0%	1,232	44	1,276	470	13	483	6	3
Apr.	Buffalo	534	494	-7.5%	-13.5%	401	8	409	83	1	84	1	0
	Rochester	345	247	-28.4%	-16.4%	172	9	181	63	2	65	1	0
	WDNY Total Month	879	741	-15.7%	-14.5%	573	17	590	146	3	149	2	0
	WDNY Total YTD	2,936	2,509	-14.5%	-14.5%	1,805	61	1,866	616	16	632	8	3
May	Buffalo	590	409	-30.7%	-17.6%	312	6	318	89	1	90	1	0
	Rochester	315	216	-31.4%	-19.9%	161	9	170	42	1	43	3	0
	WDNY Total Month	905	625	-30.9%	-18.4%	473	15	488	131	2	133	4	0
	WDNY Total YTD	3,841	3,134	-18.4%	-18.4%	2,278	76	2,354	747	18	765	12	3
June	Buffalo	547	427	-21.9%	-18.4%	323	5	328	95	1	96	3	0
	Rochester	284	246	-13.4%	-18.8%	178	3	181	62	2	64	1	0
	WDNY Total Month	831	673	-19.0%	-18.5%	501	8	509	157	3	160	4	0
	WDNY Total YTD	4,672	3,807	-18.5%	-18.5%	2,779	84	2,863	904	21	925	16	3
July	Buffalo	484	322	-33.5%	-20.5%	236	5	241	80	1	81	0	0
	Rochester	248	189	-23.8%	-19.4%	134	7	141	45	3	48	0	0
	WDNY Total Month	732	511	-30.2%	-20.1%	370	12	382	125	4	129	0	0
	WDNY Total YTD	5,404	4,318	-20.1%	-20.1%	3,149	96	3,245	1029	25	1054	16	3

¹ Primary "Nature of Debt" is consumer debt. ² Primary "Nature of Debt" is business debt.

U.S. Bankruptcy Court - Western District of New York
Case Filing Report
Month Ending November 30, 2011

Report # 1
Page 2 of 2

		Cases Filed 2010	Cases Filed 2011	% change same month	% change YTD	Chapter 7			Chapter 13			Chapter 11	Ch. 12 & 15
						¹ Non-Bus.	² Business	Total Ch. 7	¹ Non-Bus.	² Business	Total Ch.13		
Aug.	Buffalo	465	389	-16.3%	-20.0%	290	5	295	88	2	90	4	0
	Rochester	284	213	-25.0%	-20.1%	157	9	166	42	4	46	1	0
	WDNY Total Month	749	602	-19.6%	-20.0%	447	14	461	130	6	136	5	0
	WDNY Total YTD	6,153	4,920	-20.0%	-20.0%	3,596	110	3,706	1,159	31	1,190	21	3
Sep.	Buffalo	448	421	-6.0%	-18.6%	274	3	277	136	0	136	8	0
	Rochester	259	182	-29.7%	-21.1%	130	4	134	46	2	48	0	0
	WDNY Total Month	707	603	-14.7%	-19.5%	404	7	411	182	2	184	8	0
	WDNY Total YTD	6,860	5,523	-19.5%	-19.5%	4,000	117	4,117	1,341	33	1,374	29	3
Oct.	Buffalo	468	362	-22.6%	-19.0%	252	9	261	99	1	100	1	0
	Rochester	253	171	-32.4%	-22.2%	111	8	119	50	2	52	0	0
	WDNY Total Month	721	533	-26.1%	-20.1%	363	17	380	149	3	152	1	0
	WDNY Total YTD	7,581	6,056	-20.1%	-20.1%	4,363	134	4,497	1,490	36	1,526	30	3
Nov.	Buffalo	430	335	-22.1%	-19.2%	*n/a	*n/a	225	*n/a	*n/a	108	2	0
	Rochester	214	196	-8.4%	-21.2%	*n/a	*n/a	150	*n/a	*n/a	45	1	0
	WDNY Total Month	644	531	-17.5%	-19.9%	*n/a	*n/a	375	*n/a	*n/a	153	3	0
	WDNY Total YTD	8,225	6,587	-19.9%	-19.9%	*n/a	*n/a	4,872	*n/a	*n/a	1,679	33	3

¹ Primary "Nature of Debt" is consumer debt. ² Primary "Nature of Debt" is business debt.

* Data not available at this time due to system upgrade

Year to Date	Cases Filed 2010	Cases Filed 2011	% change YTD	Chapter 7 YTD			Chapter 13 YTD			Chapter 11 YTD	Chapter 12 & 15 YTD
				¹ Non-Bus.	² Business	Total Ch.7	¹ Non-Bus.	² Business	Total Ch.13		
Buffalo YTD	5,303	4,284	-19.2%	*n/a	*n/a	3,172	*n/a	*n/a	1,086	24	2
Rochester YTD	2,922	2,303	-21.2%	*n/a	*n/a	1,700	*n/a	*n/a	593	9	1
WDNY YTD	8,225	6,587	-19.9%	*n/a	*n/a	4,872	*n/a	*n/a	1,679	33	3

U.S. Bankruptcy Court - Western District of New York
Case Filings by County
Month Ending November 30, 2011

Report # 2
Page 1 of 1

Counties in Buffalo Division	Jan.	Feb.	March	April	May	June	July	Aug.	Sept.	Oct.	Nov.	Dec.	County Totals 2011 YTD	% chg from 2010 YTD
Allegany	11	9	11	8	9	10	5	12	7	17	1		100	2.0%
Cattaraugus	13	11	19	17	14	22	13	12	13	17	21		172	-21.8%
Chautauqua	35	29	47	38	37	38	26	34	40	23	16		363	-25.5%
Erie	162	225	292	309	250	265	199	233	265	222	225		2,647	-19.0%
Genesee	14	13	18	14	14	10	13	13	16	10	14		149	-5.7%
Niagara	33	58	70	82	66	65	44	60	59	54	41		632	-24.4%
Orleans	8	10	14	16	12	11	10	10	9	9	9		118	-15.1%
Wyoming	5	9	9	10	7	6	12	15	11	10	8		102	7.4%
Out of County	0	0	0	0	0	0	0	0	1	0	0		1	
2011 Totals	281	364	480	494	409	427	322	389	421	362	335		4,284	-19.2%
Counties in Rochester Division	Jan.	Feb.	March	April	May	June	July	Aug.	Sept.	Oct.	Nov.	Dec.	County Totals 2011 YTD	% chg from 2010 YTD
Chemung	10	12	21	17	17	17	10	7	7	7	10		135	-29.7%
Livingston	4	8	17	17	8	10	5	10	9	6	6		100	-23.1%
Monroe	101	133	183	153	139	145	122	136	114	107	119		1,452	-16.7%
Ontario	13	19	24	20	10	21	16	18	18	23	23		205	-12.8%
Schuyler	1	1	4	1	3	2	4	2	0	1	1		20	-60.8%
Seneca	2	2	5	4	3	6	7	3	3	2	6		43	-45.6%
Steuben	10	4	20	13	18	21	9	15	12	11	9		142	-34.6%
Wayne	12	12	15	19	14	23	16	19	18	10	20		178	-24.3%
Yates	0	4	4	3	4	1	0	3	1	3	2		25	-32.4%
Out of County	0	2	0	0	0	0	0	0	0	1	0		3	
2011 Totals	153	197	293	247	216	246	189	213	182	171	196		2,303	-21.2%
WDNY Combined Totals	434	561	773	741	625	673	511	602	603	533	531		6,587	-19.9%

U.S. Bankruptcy Court - Western District of New York
 Historical Case Filing Report (All Chapters)
 Month Ending November 30, 2011

		2002	2003	% Change	2004	% Change	2005	% Change	2006	% Change	2007	% Change	2008	% Change	2009	% Change	2010	% Change	2011
Jan.	Buffalo	602	687	-8.3%	630	8.7%	685	-75.9%	165	164.8%	437	-4.1%	419	-8.8%	382	-8.4%	350	-19.7%	281
	Rochester	327	337	-4.2%	323	20.4%	389	-73.8%	102	145.1%	250	-8.0%	230	-0.9%	228	-16.7%	190	-19.5%	153
	WDNY Total Month	929	1024	-6.9%	953	12.7%	1074	-75.1%	267	157.3%	687	-5.5%	649	-6.0%	610	-11.5%	540	-19.6%	434
	WDNY Total YTD	929	1024	-6.9%	953	12.7%	1074	-75.1%	267	157.3%	687	-5.5%	649	-6.0%	610	-11.5%	540	-19.6%	434
Feb.	Buffalo	585	701	-1.4%	691	1.9%	704	-69.6%	214	52.8%	327	30.0%	425	-5.9%	400	-8.0%	368	-0.8%	365
	Rochester	347	370	13.2%	419	-3.1%	406	-72.4%	112	98.2%	222	18.0%	262	-11.5%	232	-14.7%	198	-1.0%	196
	WDNY Total Month	932	1071	3.6%	1,110	0.0%	1,110	-70.6%	326	68.4%	549	25.1%	687	-8.0%	632	-10.4%	566	-0.9%	561
	WDNY Total YTD	1,861	2,095	-1.5%	2,063	5.9%	2,184	-72.8%	593	108.4%	1,236	8.1%	1,336	-7.0%	1,242	-11.0%	1,106	-10.0%	995
Mar.	Buffalo	702	870	19.2%	1037	5.5%	1094	-67.6%	355	36.6%	485	6.8%	518	8.5%	562	10.1%	619	-22.5%	480
	Rochester	494	537	6.0%	569	24.3%	707	-66.8%	235	42.6%	335	-14.6%	286	25.2%	358	-7.3%	332	-11.7%	293
	WDNY Total Month	1,196	1,407	14.1%	1,606	12.1%	1,801	-67.2%	590	39.0%	820	-2.0%	804	14.4%	920	3.4%	951	-18.7%	773
	WDNY Total YTD	3,057	3,502	4.8%	3,669	8.6%	3,985	-70.3%	1,183	73.8%	2,056	4.1%	2,140	1.0%	2,162	-4.9%	2,057	-14.0%	1,768
Apr.	Buffalo	757	955	-6.1%	897	40.0%	1,256	-71.4%	359	37.0%	492	15.7%	569	13.5%	646	-17.3%	534	-7.5%	494
	Rochester	512	479	22.8%	588	6.1%	624	-63.0%	231	35.5%	313	0.6%	315	9.5%	345	0.0%	345	-28.4%	247
	WDNY Total Month	1,269	1,434	3.6%	1,485	26.6%	1,880	-68.6%	590	36.4%	805	9.8%	884	12.1%	991	-11.3%	879	-15.7%	741
	WDNY Total YTD	4,326	4,936	4.4%	5,154	13.8%	5,865	-69.8%	1,773	61.4%	2,861	5.7%	3,024	4.3%	3,153	-6.9%	2,936	-14.5%	2,509
May	Buffalo	773	900	-2.1%	881	19.8%	1,055	-59.6%	426	27.2%	542	-3.5%	523	1.9%	533	10.7%	590	-30.7%	409
	Rochester	498	475	1.3%	481	28.5%	618	-60.2%	246	36.2%	335	-14.6%	286	11.2%	318	-0.9%	315	-31.4%	216
	WDNY Total Month	1,271	1,375	-0.9%	1,362	22.8%	1,673	-59.8%	672	30.5%	877	-7.8%	809	5.2%	851	6.3%	905	-30.9%	625
	WDNY Total YTD	5,597	6,311	3.2%	6,516	15.7%	7,538	-67.6%	2,445	52.9%	3,738	2.5%	3,833	4.5%	4,004	-4.1%	3,841	-18.4%	3,134
June	Buffalo	685	940	-6.5%	879	9.0%	958	-57.1%	411	18.5%	487	0.0%	487	21.6%	592	-7.6%	547	-21.9%	427
	Rochester	401	475	6.5%	506	24.5%	630	-57.6%	267	3.7%	277	9.0%	302	-1.0%	299	-5.0%	284	-13.4%	246
	WDNY Total Month	1,086	1,415	-2.1%	1,385	14.7%	1,588	-57.3%	678	12.7%	764	3.3%	789	12.9%	891	-6.7%	831	-19.0%	673
	WDNY Total YTD	6,683	7,726	2.3%	7,901	15.5%	9,126	-65.8%	3,123	44.2%	4,502	2.7%	4,622	5.9%	4,895	-4.6%	4,672	-18.5%	3,807

U.S. Bankruptcy Court - Western District of New York
 Historical Case Filing Report (All Chapters)
 Month Ending November 30, 2011

		2002	2003	% Change	2004	% Change	2005	% Change	2006	% Change	2007	% Change	2008	% Change	2009	% Change	2010	% Change	2011
July	Buffalo	635	794	3.1%	819	2.9%	843	-57.4%	359	16.7%	419	24.3%	521	9.4%	570	-15.1%	484	-33.5%	322
	Rochester	413	483	1.0%	488	2.3%	499	-51.3%	243	5.8%	257	26.1%	324	-11.4%	287	-13.6%	248	-23.8%	189
	WDNY Total Month	1,048	1,277	2.3%	1,307	2.7%	1,342	-55.1%	602	12.3%	676	25.0%	845	1.4%	857	-14.6%	732	-30.2%	511
	WDNY Total YTD	7,731	9,003	2.3%	9,208	13.7%	10,468	-64.4%	3,725	39.0%	5,178	5.6%	5,467	5.2%	5,752	-6.1%	5,404	-20.1%	4,318
Aug	Buffalo	689	784	-6.4%	734	32.8%	975	-54.2%	447	-0.9%	443	7.0%	474	16.0%	550	-15.5%	465	-16.3%	389
	Rochester	446	402	17.4%	472	36.4%	644	-59.6%	260	-3.5%	251	31.1%	329	-12.5%	288	-1.4%	284	-25.0%	213
	WDNY Total Month	1,135	1,186	1.7%	1,206	34.2%	1,619	-56.3%	707	-1.8%	694	15.7%	803	4.4%	838	-10.6%	749	-19.6%	602
	WDNY Total YTD	8,866	10,189	2.2%	10,414	16.1%	12,087	-63.3%	4,432	32.5%	5,872	6.8%	6,270	5.1%	6,590	-6.6%	6,153	-20.0%	4,920
Sep	Buffalo	634	747	24.5%	930	70.9%	1,589	-74.1%	412	8.3%	446	14.6%	511	-7.0%	475	-5.7%	448	-6.0%	421
	Rochester	441	403	40.2%	565	56.1%	882	-70.7%	258	5.0%	271	8.5%	294	-2.7%	286	-9.4%	259	-29.7%	182
	WDNY Total Month	1,075	1,150	30.0%	1,495	65.3%	2,471	-72.9%	670	7.0%	717	12.3%	805	-5.5%	761	-7.1%	707	-14.7%	603
	WDNY Total YTD	9,941	11,339	5.0%	11,909	22.2%	14,558	-65.0%	5,102	29.1%	6,589	7.4%	7,075	3.9%	7,351	-6.7%	6,860	-19.5%	5,523
Oct	Buffalo	840	932	-20.4%	742	551.8%	4,836	-91.1%	429	29.4%	555	-4.0%	533	11.4%	594	-21.2%	468	-22.2%	364
	Rochester	478	529	-19.8%	424	442.9%	2,302	-89.7%	236	28.0%	302	7.0%	323	0.0%	323	-21.7%	253	-32.4%	171
	WDNY Total Month	1,318	1,461	-20.2%	1,166	512.2%	7,138	-90.7%	665	28.9%	857	-0.1%	856	7.1%	917	-21.4%	721	-26.1%	533
	WDNY Total YTD	11,259	12,800	2.1%	13,075	65.9%	21,696	-73.4%	5,767	29.1%	7,446	6.5%	7,931	4.2%	8,268	-8.3%	7,581	-20.1%	6,056
Nov	Buffalo	656	714	-3.8%	687	-93.0%	48	727.1%	397	5.3%	418	-8.4%	383	29.0%	494	-13.0%	430	-22.1%	335
	Rochester	393	374	4.8%	392	-84.4%	61	341.0%	269	-9.7%	243	0.0%	243	17.7%	286	-25.2%	214	-8.4%	196
	WDNY Total Month	1,049	1,088	-0.8%	1,079	-89.9%	109	511.0%	666	-0.8%	661	-5.3%	626	24.6%	780	-17.4%	644	-17.5%	531
	WDNY Total YTD	12,308	13,888	1.9%	14,154	54.1%	21,805	-70.5%	6,433	26.0%	8,107	5.6%	8,557	5.7%	9,048	-9.1%	8,225	-19.9%	6,587
Dec	Buffalo	636	604	15.9%	700	-85.3%	103	235.0%	345	-10.1%	310	24.2%	385	14.5%	441	-23.8%	336		
	Rochester	409	402	8.0%	434	-82.0%	78	209.0%	241	-13.3%	209	13.4%	237	1.3%	240	-16.3%	201		
	WDNY Total Month	1,045	1,006	12.7%	1,134	-84.0%	181	223.8%	586	-11.4%	519	19.8%	622	9.5%	681	-21.1%	537		
	WDNY Total YTD	13,353	14,894	2.6%	15,288	43.8%	21,986	-68.1%	7,019	22.9%	8,626	6.4%	9,179	6.0%	9,729	-9.9%	8,762		
		2002	2003		2004		2005		2006		2007		2008		2009		2010		2011
Buffalo Total		8,210	9,628	0.0%	9,628	46.9%	14,146	-69.5%	4,319	24.2%	5,365	8.0%	5,794	7.7%	6,239	-9.6%	5,639		4,287
Rochester Total		5,143	5,266	7.5%	5,660	38.5%	7,840	-65.6%	2,700	20.8%	3,261	3.8%	3,385	3.1%	3,490	-10.5%	3,123		2,302
WDNY Total		13,353	14,894	2.6%	15,288	43.8%	21,986	-68.1%	7,019	22.9%	8,626	6.4%	9,179	6.0%	9,729	-9.9%	8,762		6,587

U.S. Bankruptcy Court - Western District of New York

Caseload by Judge, Division & District

Month Ending November 30, 2011

Report # 4

Page 1 of 3

		Chapter 7	Chapter 13	Chapter 11	Chapter 12/15	Cases Filed by Month	Cases Filed YTD	Adversary Cases				Case Closings		
								Pending Prior Month	New	Closed Current Month	Net Pending	Cases Closed 2010	Cases Closed 2011	% change
Jan.	Chief Judge Bucki	69	66	1	0	136	136	73	3	1	75	266	254	-4.5%
	Judge Kaplan	96	48	1	0	145	145	164	3	7	160	273	233	-14.7%
	Judge Ninio	98	55	0	0	153	153	50	7	3	54	249	129	-48.2%
	Buffalo Total	165	114	2	0	281	281	237	6	8	235	539	487	-9.6%
	Rochester Total	98	55	0	0	153	153	50	7	3	54	249	129	-48.2%
	WDNY Total	263	169	2	0	434	434	287	13	11	289	788	616	-21.8%
Feb.	Chief Judge Bucki	130	29	0	1	160	296	75	2	6	71	289	175	-39.4%
	Judge Kaplan	140	63	2	0	205	350	160	4	20	144	305	177	-42.0%
	Judge Ninio	133	62	1	0	196	349	54	4	8	50	233	230	-1.3%
	Buffalo Total	270	92	2	1	365	646	235	6	26	215	594	351	-40.9%
	Rochester Total	133	62	1	0	196	349	54	4	8	50	233	230	-1.3%
	WDNY Total	403	154	3	1	561	995	289	10	34	265	827	581	-29.7%
Mar.	Chief Judge Bucki	211	51	0	1	263	559	71	8	5	74	295	233	-21.0%
	Judge Kaplan	173	44	0	0	217	567	144	1	11	134	292	276	-5.5%
	Judge Ninio	226	65	1	1	293	642	50	9	10	49	404	262	-35.1%
	Buffalo Total	384	95	0	1	480	1,126	215	9	16	208	587	509	-13.3%
	Rochester Total	226	65	1	1	293	642	50	9	10	49	404	262	-35.1%
	WDNY Total	610	160	1	2	773	1,768	265	18	26	257	991	771	-22.2%
Apr.	Chief Judge Bucki	202	44	0	0	246	805	74	14	6	82	252	233	-7.5%
	Judge Kaplan	207	40	1	0	248	815	134	2	5	131	276	206	-25.4%
	Judge Ninio	181	65	1	0	247	889	49	5	6	48	296	198	-33.1%
	Buffalo Total	409	84	1	0	494	1,620	208	16	11	213	528	439	-16.9%
	Rochester Total	181	65	1	0	247	889	49	5	6	48	296	198	-33.1%
	WDNY Total	590	149	2	0	741	2,509	257	21	17	261	824	637	-22.7%
May	Chief Judge Bucki	170	57	0	0	227	1,032	82	2	2	82	114	143	25.4%
	Judge Kaplan	148	33	1	0	182	997	131	6	6	131	139	173	24.5%
	Judge Ninio	170	43	3	0	216	1,105	48	12	8	52	196	237	20.9%
	Buffalo Total	318	90	1	0	409	2,029	213	8	8	213	253	316	24.9%
	Rochester Total	170	43	3	0	216	1,105	48	12	8	52	196	237	20.9%
	WDNY Total	488	133	4	0	625	3,134	261	20	16	265	449	553	23.2%

U.S. Bankruptcy Court - Western District of New York
 Caseload by Judge, Division & District
 Month Ending November 30, 2011

Report # 4
 Page 2 of 3

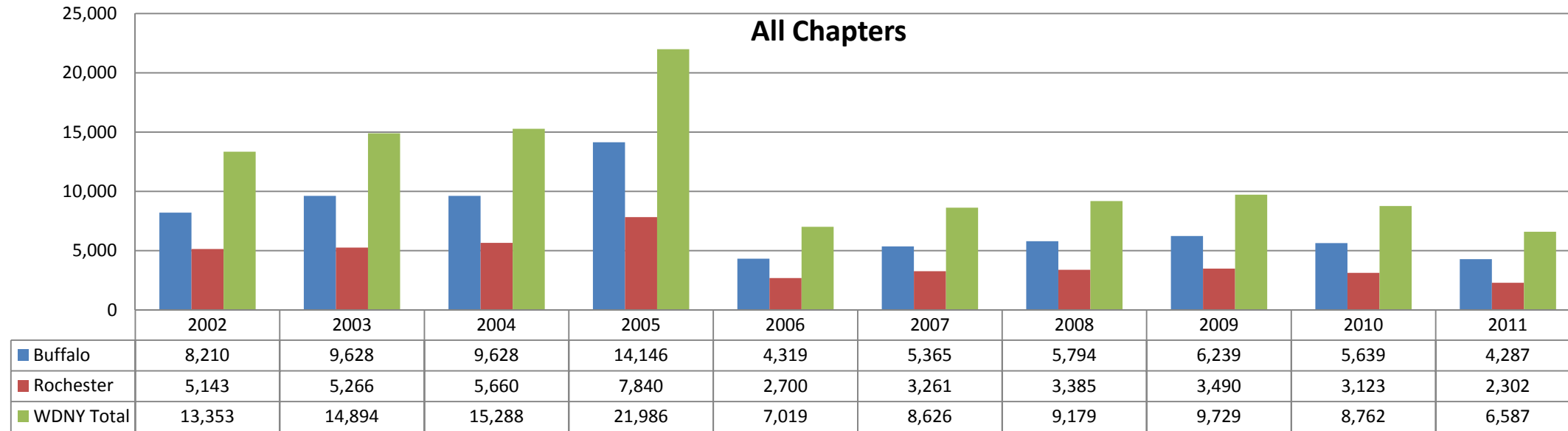
		Chapter 7	Chapter 13	Chapter 11	Chapter 12/15	Cases Filed by Month	Cases Filed YTD	Adversary Cases				Case Closings		
								Pending Prior Month	New	Closed Current Month	Net Pending	Cases Closed 2010	Cases Closed 2011	% change
June	Chief Judge Bucki	135	48	3	0	186	1,218	82	5	3	84	269	253	-5.9%
	Judge Kaplan	193	48	0	0	241	1,238	131	26	5	152	266	249	-6.4%
	Judge Ninfo	181	64	1	0	246	1,351	52	22	4	70	275	363	32.0%
	Buffalo Total	328	96	3	0	427	2,456	213	31	8	236	535	502	-6.2%
	Rochester Total	181	64	1	0	246	1,351	52	22	4	70	275	363	32.0%
	WDNY Total	509	160	4	0	673	3,807	265	53	12	306	810	865	6.8%
July	Chief Judge Bucki	132	30	0	0	162	1,380	84	4	5	83	297	294	-1.0%
	Judge Kaplan	109	51	0	0	160	1,398	152	4	8	148	284	260	-8.5%
	Judge Ninfo	141	48	0	0	189	1,540	70	4	5	69	298	211	-29.2%
	Buffalo Total	241	81	0	0	322	2,778	236	8	13	231	581	554	-4.6%
	Rochester Total	141	48	0	0	189	1,540	70	4	5	69	298	211	-29.2%
	WDNY Total	382	129	0	0	511	4,318	306	12	18	300	879	765	-13.0%
Aug.	Chief Judge Bucki	162	36	2	0	200	1,580	83	6	12	77	281	242	-13.9%
	Judge Kaplan	133	54	2	0	189	1,587	148	4	10	142	382	195	-49.0%
	Judge Ninfo	166	46	1	0	213	1,753	69	11	7	73	325	310	-4.6%
	Buffalo Total	295	90	4	0	389	3,167	231	10	22	219	663	437	-34.1%
	Rochester Total	166	46	1	0	213	1,753	69	11	7	73	325	310	-4.6%
	WDNY Total	461	136	5	0	602	4,920	300	21	29	292	988	747	-24.4%
Sep.	Chief Judge Bucki	149	45	2	0	196	1,776	77	2	1	78	291	224	-23.0%
	Judge Kaplan	128	91	6	0	225	1,812	142	4	5	141	230	228	-0.9%
	Judge Ninfo	134	48	0	0	182	1,935	73	9	17	65	332	218	-34.3%
	Buffalo Total	277	136	8	0	421	3,588	219	6	6	219	521	452	-13.2%
	Rochester Total	134	48	0	0	182	1,935	73	9	17	65	332	218	-34.3%
	WDNY Total	411	184	8	0	603	5,523	292	15	23	284	853	670	-21.5%

U.S. Bankruptcy Court - Western District of New York
 Caseload by Judge, Division & District
 Month Ending November 30, 2011

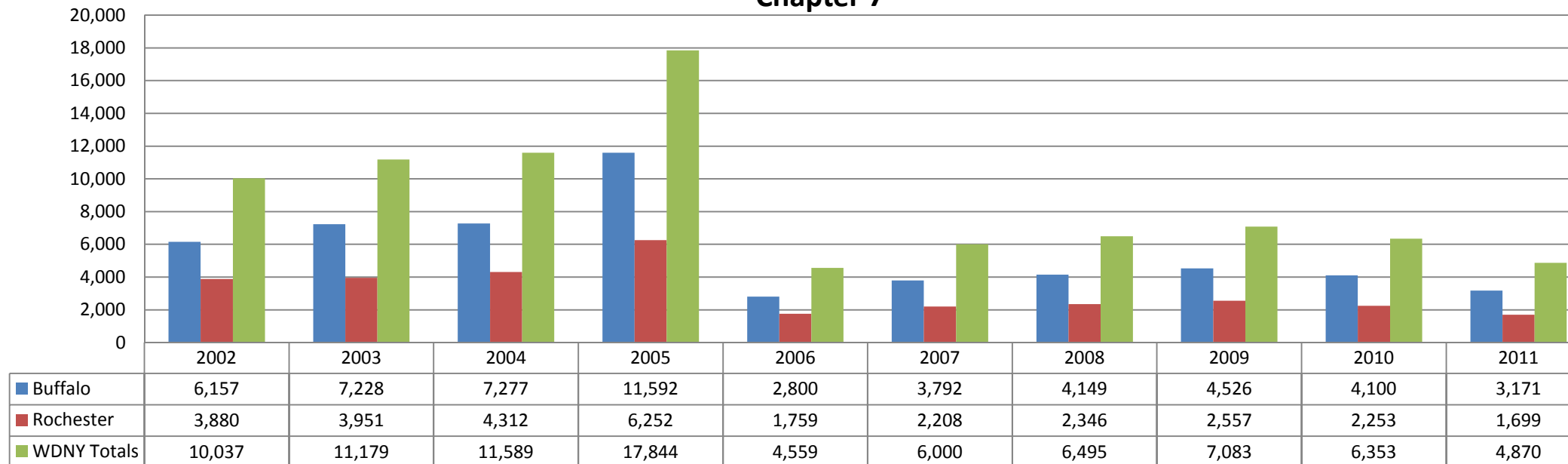
		Chapter 7	Chapter 13	Chapter 11	Chapter 12/15	Cases Filed by Month	Cases Filed YTD	Pending Prior Month	Adversary Cases			Case Closings		
									New	Closed Current Month	Net Pending	Cases Closed 2010	Cases Closed 2011	% change
Oct.	Chief Judge Bucki	124	57	0	0	181	1,957	78	6	8	76	213	151	-29.1%
	Judge Kaplan	135	45	1	0	181	1,993	141	13	5	149	242	231	-4.5%
	Judge Ninfo	119	52	0	0	171	2,106	65	6	1	70	270	208	-23.0%
	Buffalo Total	259	102	1	0	362	3,950	219	19	13	225	455	382	-16.0%
	Rochester Total	119	52	0	0	171	2,106	65	6	1	70	270	208	-23.0%
	WDNY Total	378	154	1	0	533	6,056	284	25	14	295	725	590	-18.6%
Nov.	Chief Judge Bucki	80	67	1	0	148	2,105	76	5	1	80	248	257	3.6%
	Judge Kaplan	145	41	1	0	187	2,180	149	2	0	151	219	248	13.2%
	Judge Ninfo	150	45	1	0	196	2,302	70	9	6	73	358	155	-56.7%
	Buffalo Total	225	108	2	0	335	4,285	225	7	1	231	467	505	8.1%
	Rochester Total	150	45	1	0	196	2,302	70	9	6	73	358	155	-56.7%
	WDNY Total	375	153	3	0	531	6,587	295	16	7	304	825	660	-20.0%

Year to Date	Chapter 7	Chapter 13	Chapter 11	Chapter 12 & 15	YTD Totals All Chapters	Adversary Cases YTD			Case Closings YTD		
						New	Closed	Net Pending	Cases Closed 2010	Cases Closed 2011	% change
Chief Judge Bucki YTD	1,564	530	9	2	2,105	57	50	80	2,815	2,459	-12.6%
Judge Kaplan YTD	1,607	558	15	0	2,180	69	82	151	2,908	2,476	-14.9%
Judge Ninfo YTD	1,699	593	9	1	2,302	98	75	73	3,236	2,521	-22.1%
Buffalo Total YTD	3,171	1,088	24	2	4,285	126	132	231	5,723	4,935	-13.8%
Rochester Total YTD	1,699	593	9	1	2,302	98	75	73	3,236	2,521	-22.1%
WDNY Totals YTD	4,870	1,681	33	3	6,587	224	207	304	8,959	7,456	-16.8%

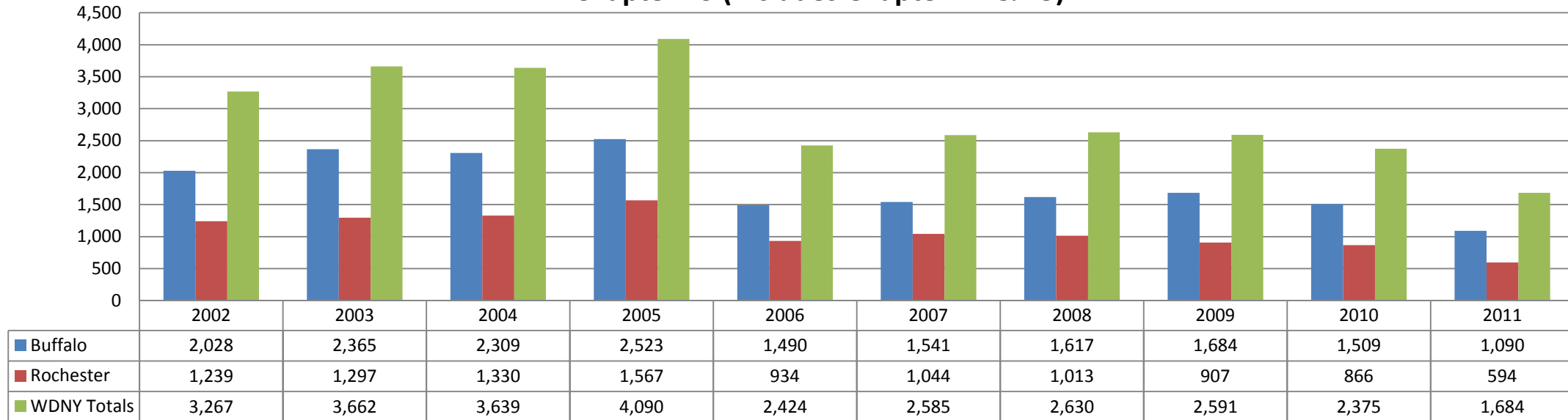
All Chapters



Chapter 7



Chapter 13 (includes Chapter 12 & 15)



Chapter 11

