

U.S. Bankruptcy Court - Western District of New York
Case Filing Report
Month Ending August 31, 2017

Report # 1
Page 1 of 2

		Cases Filed 2016	Cases Filed 2017	% change same month	% change YTD	Chapter 7				Chapter 13				Chapter 11	Ch 12 & 15
						¹ Non-Bus.	² Business	³ Other	Total Ch. 7	¹ Non-Bus.	² Business	³ Other	Total Ch.13		
Jan.	Buffalo	184	205	11.4%	11.4%	130	8	1	139	64	1	0	65	0	1
	Rochester	109	88	-19.3%	-19.3%	52	5	0	57	30	0	0	30	1	0
	WDNY Total Month	293	293	0.0%	0.0%	182	13	1	196	94	1	0	95	1	1
	WDNY Total YTD	293	293			182	13	1	196	94	1	0	95	1	1
Feb.	Buffalo	212	187	-11.8%	-1.0%	120	3	1	124	60	0	0	60	2	1
	Rochester	98	106	8.2%	-6.3%	72	4	2	78	25	1	1	27	1	0
	WDNY Total Month	310	293	-5.5%	-2.8%	192	7	3	202	85	1	1	87	3	1
	WDNY Total YTD	603	586			374	20	4	398	179	2	1	182	4	2
Mar.	Buffalo	255	278	9.0%	2.9%	184	7	0	191	84	1	0	85	2	0
	Rochester	149	145	-2.7%	-4.8%	102	9	0	111	33	0	0	33	1	0
	WDNY Total Month	404	423	4.7%	0.2%	286	16	0	302	117	1	0	118	3	0
	WDNY Total YTD	1,007	1,009			660	36	4	700	296	3	1	300	7	2
Apr.	Buffalo	263	260	-1.1%	1.8%	178	4	0	182	74	2	0	76	2	0
	Rochester	153	125	-18.3%	-8.8%	89	6	1	96	28	1	0	29	0	0
	WDNY Total Month	416	385	-7.5%	-2.0%	267	10	1	278	102	3	0	105	2	0
	WDNY Total YTD	1,423	1,394			927	46	5	978	398	6	1	405	9	2
May	Buffalo	243	281	15.6%	4.7%	186	4	0	190	87	1	0	88	3	0
	Rochester	147	145	-1.4%	-7.2%	109	2	1	112	31	1	0	32	1	0
	WDNY Total Month	390	426	9.2%	0.4%	295	6	1	302	118	2	0	120	4	0
	WDNY Total YTD	1,813	1,820			1,222	52	6	1,280	516	8	1	525	13	2
June	Buffalo	250	237	-5.2%	2.9%	157	4	1	162	73	0	0	73	2	0
	Rochester	138	139	0.7%	-5.8%	95	7	0	102	36	0	0	36	1	0
	WDNY Total Month	388	376	-3.1%	-0.2%	252	11	1	264	109	0	0	109	3	0
	WDNY Total YTD	2,201	2,196			1,474	63	7	1,544	625	8	1	634	16	2
July	Buffalo	178	240	34.8%	6.5%	147	3	0	150	85	2	0	87	2	1
	Rochester	107	113	5.6%	-4.4%	76	3	0	79	32	0	0	32	2	0
	WDNY Total Month	285	353	23.9%	2.5%	223	6	0	229	117	2	0	119	4	1
	WDNY Total YTD	2,486	2,549			1,697	69	7	1,773	742	10	1	753	20	3

¹ Primary "Nature of Debt" is consumer debt. ² Primary "Nature of Debt" is business debt. ³ Primary "Nature of Debt" is other.

U.S. Bankruptcy Court - Western District of New York

Case Filing Report

Month Ending August 31, 2017

Report # 1

Page 2 of 2

		Cases Filed 2016	Cases Filed 2017	% change same month	% change YTD	Chapter 7				Chapter 13				Chapter 11	Ch. 12 & 15
						¹ Non-Bus.	² Business	³ Other	Total Ch. 7	¹ Non-Bus.	² Business	³ Other	Total Ch.13		
Aug.	Buffalo	235	243	3.4%	6.1%	152	7	1	160	78	0	0	78	5	0
	Rochester	110	121	10.0%	-2.9%	86	4	2	92	29	0	0	29	0	0
	WDNY Total Month	345	364	5.5%	2.9%	238	11	3	252	107	0	0	107	5	0
	WDNY Total YTD	2,831	2,913			1,935	80	10	2,025	849	10	1	860	25	3

Year to Date	Cases Filed 2016	Cases Filed 2017	% change	Chapter 7 YTD				Chapter 13 YTD				Chapter 11 YTD	Chapter 12 & 15 YTD
				¹ Non-Bus.	² Business	³ Other	Total Ch. 7	¹ Non-Bus.	² Business	³ Other	Total Ch.13		
Buffalo YTD	1,820	1,931	6.1%	1,254	40	4	1,298	605	7	0	612	18	3
Rochester YTD	1,011	982	-2.9%	681	40	6	727	244	3	1	248	7	0
WDNY YTD	2,831	2,913	2.9%	1,935	80	10	2,025	849	10	1	860	25	3

¹ Primary "Nature of Debt" is consumer debt.

² Primary "Nature of Debt" is business debt.

³ Primary "Nature of Debt" is other.

U.S. Bankruptcy Court - Western District of New York
Case Filings by County
Month Ending August 31, 2017

Report # 2
Page 1 of 1

Counties in Buffalo Division	Jan.	Feb.	March	April	May	June	July	Aug.	Sept.	Oct.	Nov.	Dec.	County Totals 2017 YTD	% chg from 2016 YTD
(Olean) Allegany	4	9	2	4	6	1	3	4					33	-13.2%
(Olean) Cattaraugus	9	10	5	9	11	10	8	9					71	-12.3%
Chautauqua	12	18	24	31	24	15	22	13					159	4.6%
Erie	133	112	195	163	176	166	164	159					1,268	11.0%
(Batavia) Genesee	7	2	3	3	6	8	5	7					41	-28.1%
Niagara	35	31	38	40	43	28	34	43					292	6.2%
(Batavia) Orleans	4	1	6	3	10	3	1	6					34	-22.7%
(Batavia) Wyoming	1	4	5	7	5	6	3	2					33	6.5%
2017 Totals	205	187	278	260	281	237	240	243	0	0	0	0	1,931	6.1%
Counties in Rochester Division	Jan.	Feb.	March	April	May	June	July	Aug.	Sept.	Oct.	Nov.	Dec.	County Totals 2017 YTD	% chg from 2016 YTD
(WG) Chemung	4	12	12	8	12	11	9	7					75	8.7%
Livingston	1	6	5	3	9	5	3	4					36	0.0%
Monroe	55	57	86	80	85	84	76	80					603	-6.7%
Ontario	7	9	15	12	15	9	9	10					86	8.9%
(WG) Schuyler	3	0	3	1	1	4	0	3					15	150.0%
Seneca	1	3	3	2	1	0	0	1					11	-54.2%
(WG) Steuben	5	9	11	8	10	16	7	8					74	-3.9%
Wayne	12	6	8	11	12	9	9	8					75	13.6%
Yates	0	4	2	0	0	1	0	0					7	-12.5%
2017 Totals	88	106	145	125	145	139	113	121	0	0	0	0	982	-2.9%
WDNY Combined Totals	293	293	423	385	426	376	353	364	0	0	0	0	2,913	2.9%

U.S. Bankruptcy Court - Western District of New York
Historical Case Filing Report (All Chapters)

Month Ending August 31, 2017

		2008	% Change	2009	% Change	2010	% Change	2011	% Change	2012	% Change	2013	% Change	2014	% Change	2015	% Change	2016	% Change	2017
Jan.	Buffalo	419	-8.8%	382	-8.4%	350	-19.7%	281	-3.2%	272	-7.4%	252	-4.0%	242	-22.7%	188	-2.1%	184	11.4%	205
	Rochester	230	-0.9%	228	-16.7%	190	-19.5%	153	-0.7%	152	17.8%	179	-25.1%	134	-1.5%	131	-16.8%	109	-19.3%	88
	WDNY Total Month	649	-6.0%	610	-11.5%	540	-19.6%	434	-2.3%	424	1.7%	431	-12.8%	376	-15.2%	319	-8.2%	293	0.0%	293
	WDNY Total YTD	649	-6.0%	610	-11.5%	540	-19.6%	434	-2.3%	424	1.7%	431	-12.8%	376	-15.2%	319	-8.2%	293	0.0%	293
Feb.	Buffalo	425	-5.9%	400	-8.0%	368	-0.8%	365	-3.8%	351	-22.2%	273	-15.4%	231	-20.3%	184	15.2%	212	-11.8%	187
	Rochester	262	-11.1%	233	-15.0%	198	-1.0%	196	-6.6%	183	-19.1%	148	-29.7%	104	-28.8%	74	32.4%	98	8.2%	106
	WDNY Total Month	687	-7.9%	633	-10.6%	566	-0.9%	561	-4.8%	534	-21.2%	421	-20.4%	335	-23.0%	258	20.2%	310	-5.5%	293
	WDNY Total YTD	1,336	-7.0%	1,243	-11.0%	1,106	-10.0%	995	-3.7%	958	-11.1%	852	-16.5%	711	-18.8%	577	4.5%	603	-2.8%	586
Mar.	Buffalo	518	8.5%	562	10.1%	619	-22.5%	480	-12.7%	419	-5.5%	396	-20.7%	314	-4.5%	300	-15.0%	255	9.0%	278
	Rochester	286	25.2%	358	-7.5%	331	-11.8%	292	-18.8%	237	-27.4%	172	0.0%	172	-23.8%	131	13.7%	149	-2.7%	145
	WDNY Total Month	804	14.4%	920	3.3%	950	-18.7%	772	-15.0%	656	-13.4%	568	-14.4%	486	-11.3%	431	-6.3%	404	4.7%	423
	WDNY Total YTD	2,140	1.1%	2,163	-4.9%	2,056	-14.1%	1,767	-8.7%	1,614	-12.0%	1,420	-15.7%	1,197	-15.8%	1,008	-0.1%	1,007	0.2%	1,009
Apr.	Buffalo	569	13.5%	646	-17.3%	534	-7.5%	494	-25.3%	369	-10.3%	331	-0.9%	328	-5.2%	311	-15.4%	263	-1.1%	260
	Rochester	315	9.5%	345	0.0%	345	-28.4%	247	-10.5%	221	-10.0%	199	-19.1%	161	8.7%	175	-12.6%	153	-18.3%	125
	WDNY Total Month	884	12.1%	991	-11.3%	879	-15.7%	741	-20.4%	590	-10.2%	530	-7.7%	489	-0.6%	486	-14.4%	416	-7.5%	385
	WDNY Total YTD	3,024	4.3%	3,154	-6.9%	2,935	-14.5%	2,508	-12.1%	2,204	-11.5%	1,950	-13.5%	1,686	-11.4%	1,494	-4.8%	1,423	-2.0%	1,394
May	Buffalo	523	1.9%	533	10.7%	590	-30.7%	409	3.2%	422	-20.1%	337	-15.4%	285	0.7%	287	-15.3%	243	15.6%	281
	Rochester	286	11.2%	318	-0.9%	315	-31.4%	216	-0.9%	214	-4.2%	205	-15.1%	174	-18.4%	142	3.5%	147	-1.4%	145
	WDNY Total Month	809	5.2%	851	6.3%	905	-30.9%	625	1.8%	636	-14.8%	542	-15.3%	459	-6.5%	429	-9.1%	390	9.2%	426
	WDNY Total YTD	3,833	4.5%	4,005	-4.1%	3,840	-18.4%	3,133	-9.4%	2,840	-12.3%	2,492	-13.9%	2,145	-10.3%	1,923	-5.7%	1,813	0.4%	1,820
June	Buffalo	487	21.6%	592	-7.6%	547	-21.9%	427	-14.8%	364	-11.3%	323	-15.5%	273	-12.5%	239	4.6%	250	-5.2%	237
	Rochester	302	-1.0%	299	-5.0%	284	-13.4%	246	-36.6%	156	4.5%	163	-22.7%	126	5.6%	133	3.8%	138	0.7%	139
	WDNY Total Month	789	12.9%	891	-6.7%	831	-19.0%	673	-22.7%	520	-6.5%	486	-17.9%	399	-6.8%	372	4.3%	388	-3.1%	376
	WDNY Total YTD	4,622	5.9%	4,896	-4.6%	4,671	-18.5%	3,806	-11.7%	3,360	-11.4%	2,978	-14.6%	2,544	-9.8%	2,295	-4.1%	2,201	-0.2%	2,196

U.S. Bankruptcy Court - Western District of New York

Historical Case Filing Report (All Chapters)

Month Ending August 31, 2017

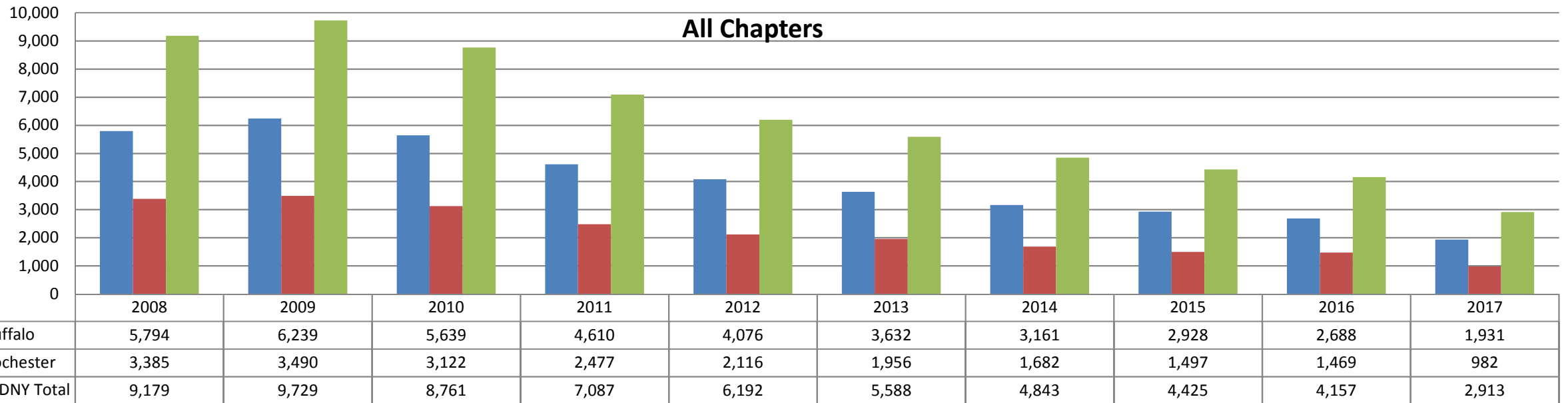
		2008	% Change	2009	% Change	2010	% Change	2011	% Change	2012	% Change	2013	% Change	2014	% Change	2015	% Change	2016	% Change	2017
July	Buffalo	521	9.4%	570	-15.1%	484	-33.5%	322	1.9%	328	-13.7%	283	-17.3%	234	9.4%	257	-30.7%	178	34.8%	240
	Rochester	324	-11.4%	287	-13.6%	248	-23.8%	189	-5.8%	178	8.4%	193	-26.9%	141	-2.8%	137	-21.9%	107	5.6%	113
	WDNY Total Month	845	1.4%	857	-14.6%	732	-30.2%	511	-1.0%	506	-5.9%	476	-21.2%	375	4.8%	394	-27.7%	285	23.9%	353
	WDNY Total YTD	5,467	5.2%	5,753	-6.1%	5,403	-20.1%	4,317	-10.4%	3,866	-10.7%	3,454	-15.5%	2,919	-7.9%	2,689	-7.5%	2,486	2.5%	2,549
Aug	Buffalo	474	16.0%	550	-15.5%	465	-16.6%	388	-7.2%	360	-15.6%	304	-23.4%	233	-8.2%	214	9.8%	235	3.4%	243
	Rochester	329	-12.5%	288	-1.4%	284	-25.0%	213	-16.0%	179	-20.7%	142	-1.4%	140	-10.7%	126	-12.7%	110	10.0%	121
	WDNY Total Month	803	4.4%	838	-10.6%	749	-19.8%	601	-10.3%	539	-17.3%	446	-16.4%	373	-9.1%	340	1.5%	345	5.5%	364
	WDNY Total YTD	6,270	5.1%	6,591	-6.6%	6,153	-20.1%	4,919	-10.4%	4,405	-11.5%	3,900	-15.6%	3,292	-8.0%	3,029	-6.5%	2,831	2.9%	2,913
Sep	Buffalo	511	-7.0%	475	-5.7%	448	-6.3%	420	-39.0%	256	13.3%	290	-2.1%	284	0.0%	284	-18.3%	232		
	Rochester	294	-2.7%	286	-9.4%	259	-29.7%	182	-26.4%	134	15.7%	155	-12.9%	135	-20.0%	108	6.5%	115		
	WDNY Total Month	805	-5.5%	761	-7.1%	707	-14.9%	602	-35.2%	390	14.1%	445	-5.8%	419	-6.4%	392	-11.5%	347		
	WDNY Total YTD	7,075	3.9%	7,352	-6.7%	6,860	-19.5%	5,522	-13.2%	4,795	-9.4%	4,345	-14.6%	3,711	-7.9%	3,421	-7.1%	3,178		
Oct	Buffalo	533	11.4%	594	-21.2%	468	-22.6%	362	13.3%	410	-4.6%	391	-24.0%	297	-11.8%	262	18.7%	311		
	Rochester	323	0.0%	323	-21.7%	253	-32.0%	172	-5.8%	162	-14.2%	139	-12.9%	121	9.9%	133	-13.5%	115		
	WDNY Total Month	856	7.1%	917	-21.4%	721	-25.9%	534	7.1%	572	-7.3%	530	-21.1%	418	-5.5%	395	7.8%	426		
	WDNY Total YTD	7,931	4.3%	8,269	-8.3%	7,581	-20.1%	6,055	-11.4%	5,367	-9.2%	4,875	-15.3%	4,129	-7.6%	3,816	-5.6%	3,604		
Nov	Buffalo	383	29.0%	494	-13.0%	430	-22.3%	334	-20.7%	265	-10.9%	236	-2.5%	230	-7.4%	213	-15.0%	181		
	Rochester	243	17.7%	286	-25.2%	214	-7.9%	197	-18.8%	160	-16.3%	134	-5.2%	127	0.0%	127	-1.6%	125		
	WDNY Total Month	626	24.6%	780	-17.4%	644	-17.5%	531	-20.0%	425	-12.9%	370	-3.5%	357	-4.8%	340	-10.0%	306		
	WDNY Total YTD	8,557	5.7%	9,049	-9.1%	8,225	-19.9%	6,585	-12.0%	5,792	-9.4%	5,245	-14.5%	4,486	-7.4%	4,156	-5.9%	3,910		
Dec	Buffalo	385	14.3%	440	-23.6%	336	-2.4%	328	-20.7%	260	-16.9%	216	-2.8%	210	-10.5%	189	-23.8%	144		
	Rochester	237	1.3%	240	-16.3%	201	-13.4%	174	-19.5%	140	-9.3%	127	15.7%	147	-45.6%	80	28.8%	103		
	WDNY Total Month	622	9.3%	680	-21.0%	537	-6.5%	502	-20.3%	400	-14.3%	343	4.1%	357	-24.9%	269	-8.2%	247		
	WDNY Total YTD	9,179	6.0%	9,729	-9.9%	8,762	-19.1%	7,087	-12.6%	6,192	-9.8%	5,588	-13.3%	4,843	-8.7%	4,425	-6.1%	4,157		
		2008	% Change	2009	% Change	2010	% Change	2011	% Change	2012	% Change	2013	% Change	2014	% Change	2015	% Change	2016	% Change	2017
	Buffalo Total	5,748	8.5%	6,238	-9.6%	5,639	-18.2%	4,610	-11.6%	4,076	-10.9%	3,632	-13.0%	3,161	-7.4%	2,928	-8.2%	2,688		
	Rochester Total	3,431	1.7%	3,491	-10.6%	3,122	-20.7%	2,477	-14.6%	2,116	-7.6%	1,956	-14.0%	1,682	-11.0%	1,497	-1.9%	1,469		
	WDNY Total	9,179	6.0%	9,729	-9.9%	8,761	-19.1%	7,087	-12.6%	6,192	-9.8%	5,588	-13.3%	4,843	-8.6%	4,425	-6.1%	4,157		

		Chapter 7	Chapter 13	Chapter 11	Chapter 12/15	Cases Filed by Month	Cases Filed YTD	Adversary Cases				Case Closings		
								Pending Prior Month	New	Closed Current Month	Net Pending	Cases Closed 2016	Cases Closed 2017	% change
Jan.	Chief Judge Bucki	59	40	0	1	100	100	35	3	10	28	163	131	#DIV/0!
	Judge Kaplan	80	25	0	0	105	105	114	0	10	104	116	131	12.9%
	Judge Warren	57	30	1	0	88	88	11	1	1	11	97	129	33.0%
	Buffalo Total	139	65	0	1	205	205	149	3	20	132	279	262	-6.1%
	Rochester Total	57	30	1	0	88	88	11	1	1	11	97	129	33.0%
	WDNY Total	196	95	1	1	293	293	160	4	21	143	376	391	4.0%
Feb.	Chief Judge Bucki	80	21	1	1	103	203	28	2	1	29	116	125	7.8%
	Judge Kaplan	44	39	1	0	84	189	104	1	2	103	149	104	-30.2%
	Judge Warren	78	27	1	0	106	194	11	1	0	12	200	120	-40.0%
	Buffalo Total	124	60	2	1	187	392	132	3	3	132	265	229	-13.6%
	Rochester Total	78	27	1	0	106	194	11	1	0	12	200	120	-40.0%
	WDNY Total	202	87	3	1	293	586	143	4	3	144	465	349	-24.9%
Mar.	Chief Judge Bucki	89	42	0	0	131	334	29	3	3	29	152	99	-34.9%
	Judge Kaplan	102	43	2	0	147	336	103	1	18	86	135	111	-17.8%
	Judge Warren	111	33	1	0	145	339	12	1	0	13	154	120	-22.1%
	Buffalo Total	191	85	2	0	278	670	132	4	21	115	287	210	-26.8%
	Rochester Total	111	33	1	0	145	339	12	1	0	13	154	120	-22.1%
	WDNY Total	302	118	3	0	423	1,009	144	5	21	128	441	330	-25.2%
Apr.	Chief Judge Bucki	95	46	1	0	142	476	29	7	2	34	131	106	-19.1%
	Judge Kaplan	87	30	1	0	118	454	86	1	1	86	137	109	-20.4%
	Judge Warren	96	29	0	0	125	464	13	4	0	17	141	90	-36.2%
	Buffalo Total	182	76	2	0	260	930	115	8	3	120	268	215	-19.8%
	Rochester Total	96	29	0	0	125	464	13	4	0	17	141	90	-36.2%
	WDNY Total	278	105	2	0	385	1,394	128	12	3	137	409	305	-25.4%
May	Chief Judge Bucki	97	30	2	0	129	605	34	3	1	36	117	127	8.5%
	Judge Kaplan	93	58	1	0	152	606	86	0	6	80	141	125	-11.3%
	Judge Warren	112	32	1	0	145	609	17	3	1	19	172	75	-56.4%
	Buffalo Total	190	88	3	0	281	1,211	120	3	7	116	258	252	-2.3%
	Rochester Total	112	32	1	0	145	609	17	3	1	19	172	75	-56.4%
	WDNY Total	302	120	4	0	426	1,820	137	6	8	135	430	327	-24.0%

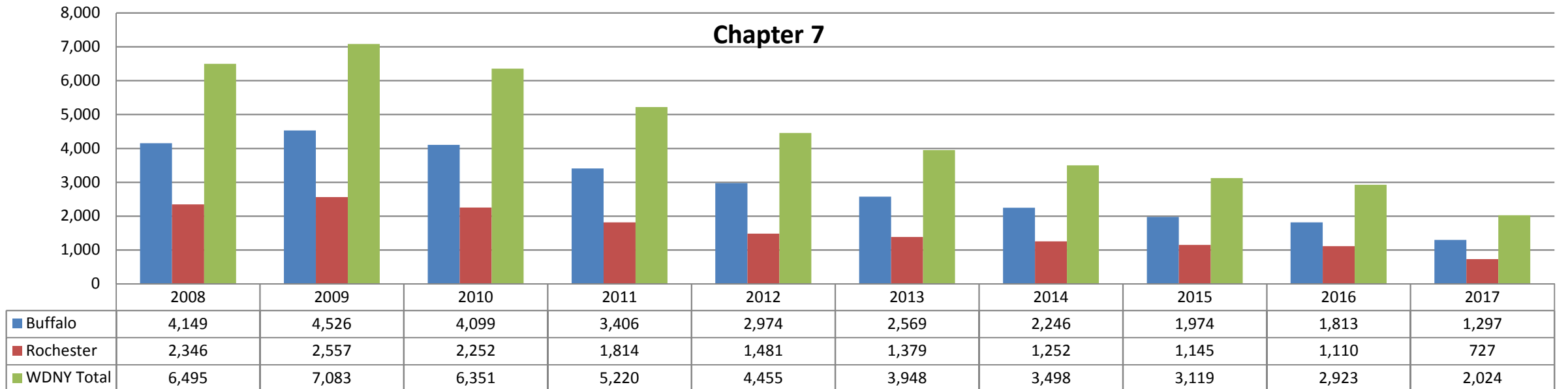
		Chapter 7	Chapter 13	Chapter 11	Chapter 12/15	Cases Filed by Month	Cases Filed YTD	Adversary Cases				Case Closings		
								Pending Prior Month	New	Closed Current Month	Net Pending	Cases Closed 2016	Cases Closed 2017	% change
June	Chief Judge Bucki	64	38	1	0	103	708	36	2	3	35	120	125	4.2%
	Judge Kaplan	98	35	1	0	134	740	80	3	3	80	131	113	-13.7%
	Judge Warren	102	36	1	0	139	748	19	2	1	20	162	247	52.5%
	Buffalo Total	162	73	2	0	237	1,448	116	5	6	115	251	238	-5.2%
	Rochester Total	102	36	1	0	139	748	19	2	1	20	162	247	52.5%
	WDNY Total	264	109	3	0	376	2,196	135	7	7	135	413	485	17.4%
July	Chief Judge Bucki	85	58	2	1	146	854	35	0	1	34	166	108	-34.9%
	Judge Kaplan	64	30	0	0	94	834	80	0	0	80	158	126	-20.3%
	Judge Warren	79	32	2	0	113	861	20	1	1	20	160	88	-45.0%
	Buffalo Total	149	88	2	1	240	1,688	115	0	1	114	324	234	-27.8%
	Rochester Total	79	32	2	0	113	861	20	1	1	20	160	88	-45.0%
	WDNY Total	228	120	4	1	353	2,549	135	1	2	134	484	322	-33.5%
Aug.	Chief Judge Bucki	75	34	4	0	113	967	34	4	2	36	141	183	29.8%
	Judge Kaplan	85	44	1	0	130	964	80	17	3	94	157	142	-9.6%
	Judge Warren	92	29	0	0	121	982	20	1	0	21	103	144	39.8%
	Buffalo Total	160	78	5	0	243	1,931	114	21	5	130	298	325	9.1%
	Rochester Total	92	29	0	0	121	982	20	1	0	21	103	144	39.8%
	WDNY Total	252	107	5	0	364	2,913	134	22	5	151	401	469	17.0%

Year to Date	Chapter 7	Chapter 13	Chapter 11	Chapter 12 & 15	YTD Totals All Chapters	Adversary Cases YTD			Case Closings YTD		
						New	Closed	Net Pending	Cases Closed 2016	Cases Closed 2017	% change
Chief Judge Bucki YTD	644	309	11	3	967	24	23	36	1,106	1,004	-9.2%
Judge Kaplan YTD	653	304	7	0	964	23	43	94	1,124	961	-14.5%
Judge Warren YTD	727	248	7	0	982	14	4	21	1,189	1,013	-14.8%
Buffalo Total YTD	1,297	613	18	3	1,931	47	66	130	2,230	1,965	-11.9%
Rochester Total YTD	727	248	7	0	982	14	4	21	1,189	1,013	-14.8%
WDNY Totals YTD	2,024	861	25	3	2,913	61	70	151	3,419	2,978	-12.9%

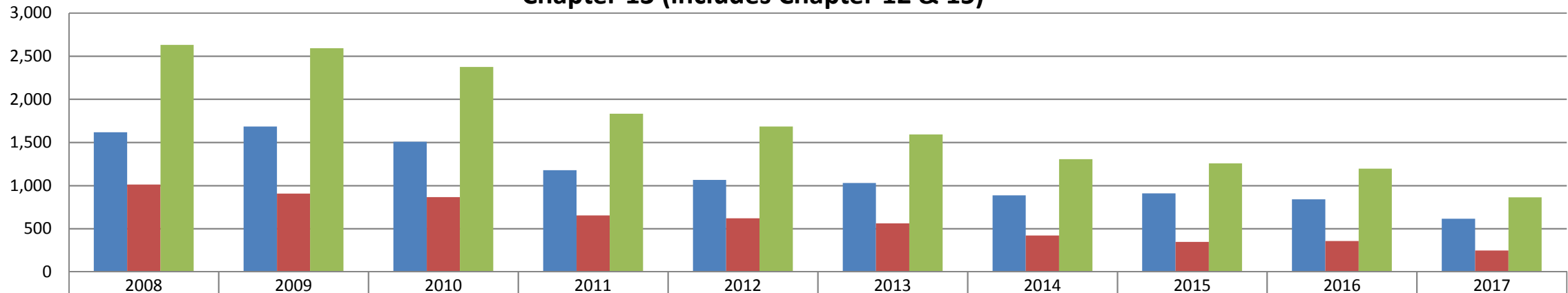
All Chapters



Chapter 7

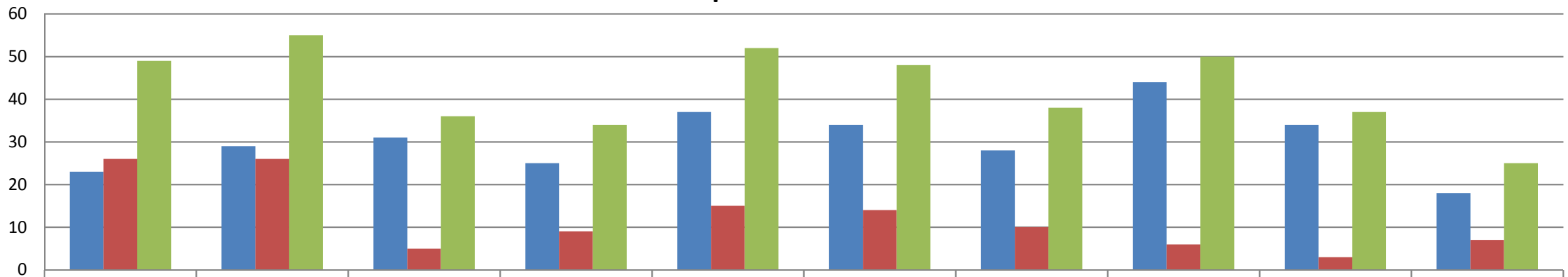


Chapter 13 (includes Chapter 12 & 15)



	2008	2009	2010	2011	2012	2013	2014	2015	2016	2017
■ Buffalo	1,617	1,684	1,509	1,179	1,065	1,029	887	909	841	616
■ Rochester	1,013	907	865	654	620	563	420	347	356	248
■ WDNY Totals	2,630	2,591	2,374	1,833	1,685	1,592	1,307	1,256	1,197	864

Chapter 11



	2008	2009	2010	2011	2012	2013	2014	2015	2016	2017
■ Buffalo	23	29	31	25	37	34	28	44	34	18
■ Rochester	26	26	5	9	15	14	10	6	3	7
■ WDNY Totals	49	55	36	34	52	48	38	50	37	25