

Month Ending August 31, 2022

		Cases Filed 2021	Cases Filed 2022	% change same month	% change YTD	Chapter 7				Chapter 13				Chapter 11	Ch 12 & 15
						¹ Non-Bus.	² Business	³ Other	Total Ch. 7	¹ Non-Bus.	² Business	³ Other	Total Ch.13		
Jan.	Buffalo	92	82	-10.9%	-10.9%	58	1	0	59	22	0	0	22	1	0
	Rochester	51	45	-11.8%	-11.8%	30	1	0	31	11	0	0	11	3	0
	WDNY Total Month	143	127	-11.2%	-11.2%	88	2	0	90	33	0	0	33	4	0
	WDNY Total YTD	143	127			88	2	0	90	33	0	0	33	4	0
Feb.	Buffalo	102	93	-8.8%	-9.8%	61	3	0	64	27	0	0	27	2	0
	Rochester	76	48	-36.8%	-26.8%	32	0	0	32	16	0	0	16	0	0
	WDNY Total Month	178	141	-20.8%	-16.5%	93	3	0	96	43	0	0	43	2	0
	WDNY Total YTD	321	268			181	5	0	186	76	0	0	76	6	0
Mar.	Buffalo	151	132	-12.6%	-11.0%	101	1	0	102	29	0	0	29	1	0
	Rochester	72	65	-9.7%	-20.6%	47	1	0	48	14	1	0	15	2	0
	WDNY Total Month	223	197	-11.7%	-14.5%	148	2	0	150	43	1	0	44	3	0
	WDNY Total YTD	544	465			329	7	0	336	119	1	0	120	9	0
Apr.	Buffalo	135	119	-11.9%	-11.3%	79	4	1	84	35	0	0	35	0	0
	Rochester	78	61	-21.8%	-20.9%	39	0	1	40	16	3	1	20	1	0
	WDNY Total Month	213	180	-15.5%	-14.8%	118	4	2	124	51	3	1	55	1	0
	WDNY Total YTD	757	645			447	11	2	460	170	4	1	175	10	0
May	Buffalo	126	104	-17.5%	-12.5%	68	2	0	70	33	1	0	34	0	0
	Rochester	69	60	-13.0%	-19.4%	40	2	1	43	10	0	1	11	6	0
	WDNY Total Month	195	164	-15.9%	-15.0%	108	4	1	113	43	1	1	45	6	0
	WDNY Total YTD	952	809			555	15	3	573	213	5	2	220	16	0
June	Buffalo	115	116	0.9%	-10.4%	79	2	0	81	35	0	0	35	0	0
	Rochester	68	48	-29.4%	-21.0%	32	1	0	33	14	0	1	15	0	0
	WDNY Total Month	183	164	-10.4%	-14.3%	111	3	0	114	49	0	1	50	0	0
	WDNY Total YTD	1,135	973			666	18	3	687	262	5	3	270	16	0
July	Buffalo	132	93	-29.5%	-13.4%	64	3	0	67	25	0	0	25	1	0
	Rochester	68	48	-29.4%	-22.2%	34	1	0	35	13	0	0	13	0	0
	WDNY Total Month	200	141	-29.5%	-16.6%	98	4	0	102	38	0	0	38	1	0
	WDNY Total YTD	1,335	1,114			764	22	3	789	300	5	3	308	17	0

¹ Primary "Nature of Debt" is consumer debt.

² Primary "Nature of Debt" is business debt.

³ Primary "Nature of Debt" is other.

U.S. Bankruptcy Court - Western District of New York
Case Filing Report
Month Ending August 31, 2022

Report # 1
Page 2 of 2

	Cases Filed 2021	Cases Filed 2022	% change same month	% change YTD	Chapter 7				Chapter 13				Chapter 11	Ch. 12 & 15	
					¹ Non-Bus.	² Business	³ Other	Total Ch. 7	¹ Non-Bus.	² Business	³ Other	Total Ch.13			
Aug.	Buffalo	114	78	-31.6%	-15.5%	54	1	0	55	22	1	0	23	0	0
	Rochester	59	48	-18.6%	-21.8%	36	0	0	36	10	1	0	11	1	0
	WDNY Total Month	173	126	-27.2%	-17.8%	90	1	0	91	32	2	0	34	1	0
	WDNY Total YTD	1,508	1,240			854	23	3	880	332	7	3	342	18	0

Year to Date	Cases Filed 2021	Cases Filed 2022	% change	Chapter 7 YTD				Chapter 13 YTD				Chapter 11 YTD	Chapter 12 & 15 YTD
				¹ Non-Bus.	² Business	³ Other	Total Ch. 7	¹ Non-Bus.	² Business	³ Other	Total Ch.13		
Buffalo YTD	967	817	-15.5%	564	17	1	582	228	2	0	230	5	0
Rochester YTD	541	423	-21.8%	290	6	2	298	104	5	3	112	13	0
WDNY YTD	1,508	1,240	-17.8%	854	23	3	880	332	7	3	342	18	0

¹ Primary "Nature of Debt" is consumer debt. ² Primary "Nature of Debt" is business debt. ³ Primary "Nature of Debt" is other.

U.S. Bankruptcy Court - Western District of New York

Case Filings by County

Month Ending August 31, 2022

Report # 2

Page 1 of 1

Counties in Buffalo Division	Jan.	Feb.	March	April	May	June	July	Aug.	Sept.	Oct.	Nov.	Dec.	County Totals 2022 YTD	% chg from 2021 YTD
(Olean) Allegany	1	1	2	2	1	4	2	2					15	36.4%
(Olean) Cattaraugus	2	4	4	3	4	2	6	6					31	-20.5%
Chautauqua	8	7	9	10	14	2	9	6					65	-27.0%
Erie	48	50	81	74	61	72	52	43					481	-18.6%
(Batavia) Genesee	2	9	3	7	2	1	2	1					27	-25.0%
Niagara	16	15	27	17	15	27	17	13					147	-7.0%
(Batavia) Orleans	3	3	5	2	3	6	1	4					27	3.8%
(Batavia) Wyoming	2	4	1	4	4	2	4	3					24	41.2%
Out of County	0	0	0	0	0	0	0	0					0	
2022 Totals	82	93	132	119	104	116	93	78	0	0	0	0	817	-15.5%

Counties in Rochester Division	Jan.	Feb.	March	April	May	June	July	Aug.	Sept.	Oct.	Nov.	Dec.	County Totals 2022 YTD	% chg from 2021 YTD
(WG) Chemung	3	4	4	3	3	5	2	3					27	-22.9%
Livingston	1	1	2	2	5	4	3	2					20	11.1%
Monroe	32	33	38	32	38	20	30	32					255	-22.5%
Ontario	3	7	6	8	3	7	3	2					39	-33.9%
(WG) Schuyler	0	0	0	1	1	0	1	0					3	-62.5%
Seneca	1	0	1	1	0	3	2	3					11	-31.3%
(WG) Steuben	3	0	7	4	3	7	3	5					32	6.7%
Wayne	1	0	7	8	6	2	3	1					28	-20.0%
Yates	1	3	0	2	1	0	1	0					8	-27.3%
Out of County	0	0	0	0	0	0	0	0					0	
2022 Totals	45	48	65	61	60	48	48	48	0	0	0	0	423	-21.8%

WDNY Combined Totals	127	141	197	180	164	164	141	126	0	0	0	0	1,240	-17.8%
-----------------------------	------------	------------	------------	------------	------------	------------	------------	------------	----------	----------	----------	----------	--------------	---------------

U.S. Bankruptcy Court - Western District of New York

Historical Case Filing Report (All Chapters)

Month Ending August 31, 2022

Report #3

Page 1 of 2

		2013	% Change	2014	% Change	2015	% Change	2016	% Change	2017	% Change	2018	% Change	2019	% Change	2020	% Change	2021	% Change	2022
Jan.	Buffalo	252	-4.0%	242	-22.7%	188	-2.1%	184	11.4%	205	-8.3%	188	-8.5%	172	8.7%	187	-50.8%	92	-10.9%	82
	Rochester	179	-25.1%	134	-1.5%	131	-16.8%	109	-19.3%	88	13.6%	100	-2.0%	98	0.0%	98	-48.0%	51	-11.8%	45
	WDNY Total Month	431	-12.8%	376	-15.2%	319	-8.2%	293	0.0%	293	-1.7%	288	-6.3%	270	5.6%	285	-49.8%	143	-11.2%	127
	WDNY Total YTD	431	-12.8%	376	-15.2%	319	-8.2%	293	0.0%	293	-1.7%	288	-6.3%	270	5.6%	285	-49.8%	143	-11.2%	127
Feb.	Buffalo	273	-15.4%	231	-20.3%	184	15.2%	212	-11.8%	187	-0.5%	186	9.1%	203	-23.6%	155	-34.2%	102	-8.8%	93
	Rochester	148	-29.7%	104	-28.8%	74	32.4%	98	8.2%	106	-10.4%	95	-8.4%	87	1.1%	88	-13.6%	76	-36.8%	48
	WDNY Total Month	421	-20.4%	335	-23.0%	258	20.2%	310	-5.5%	293	-4.1%	281	3.2%	290	-16.2%	243	-26.7%	178	-20.8%	141
	WDNY Total YTD	852	-16.5%	711	-18.8%	577	4.5%	603	-2.8%	586	-2.9%	569	-1.6%	560	-5.7%	528	-39.2%	321	-16.5%	268
Mar.	Buffalo	396	-20.7%	314	-4.5%	300	-15.0%	255	9.0%	278	-7.2%	258	6.6%	275	-21.8%	215	-29.8%	151	-12.6%	132
	Rochester	172	0.0%	172	-23.8%	131	13.7%	149	-2.7%	145	0.0%	145	-17.2%	120	-3.3%	116	-37.9%	72	-9.7%	65
	WDNY Total Month	568	-14.4%	486	-11.3%	431	-6.3%	404	4.7%	423	-4.7%	403	-2.0%	395	-16.2%	331	-32.6%	223	-11.7%	197
	WDNY Total YTD	1,420	-15.7%	1,197	-15.8%	1,008	-0.1%	1,007	0.2%	1,009	-3.7%	972	-1.7%	955	-10.1%	859	-36.7%	544	-14.5%	465
Apr.	Buffalo	331	-0.9%	328	-5.2%	311	-15.4%	263	-1.1%	260	0.8%	262	4.2%	273	-64.8%	96	40.6%	135	-11.9%	119
	Rochester	199	-19.1%	161	8.7%	175	-12.6%	153	-18.3%	125	14.4%	143	-2.8%	139	-60.4%	55	41.8%	78	-21.8%	61
	WDNY Total Month	530	-7.7%	489	-0.6%	486	-14.4%	416	-7.5%	385	5.2%	405	1.7%	412	-63.3%	151	41.1%	213	-15.5%	180
	WDNY Total YTD	1,950	-13.5%	1,686	-11.4%	1,494	-4.8%	1,423	-2.0%	1,394	-1.2%	1,377	-0.7%	1,367	-26.1%	1,010	-25.0%	757	-14.8%	645
May	Buffalo	337	-15.4%	285	0.7%	287	-15.3%	243	15.6%	281	-16.0%	236	11.9%	264	-53.0%	124	1.6%	126	-17.5%	104
	Rochester	205	-15.1%	174	-18.4%	142	3.5%	147	-1.4%	145	-20.7%	115	7.8%	124	-46.0%	67	3.0%	69	-13.0%	60
	WDNY Total Month	542	-15.3%	459	-6.5%	429	-9.1%	390	9.2%	426	-17.6%	351	10.5%	388	-50.8%	191	2.1%	195	-15.9%	164
	WDNY Total YTD	2,492	-13.9%	2,145	-10.3%	1,923	-5.7%	1,813	0.4%	1,820	-5.1%	1,728	1.6%	1,755	-31.6%	1,201	-20.7%	952	-15.0%	809
June	Buffalo	323	-15.5%	273	-12.5%	239	4.6%	250	-5.2%	237	-8.4%	217	-11.1%	193	-35.8%	124	-7.3%	115	0.9%	116
	Rochester	163	-22.7%	126	5.6%	133	3.8%	138	0.7%	139	-12.2%	122	-11.5%	108	-23.1%	83	-18.1%	68	-29.4%	48
	WDNY Total Month	486	-17.9%	399	-6.8%	372	4.3%	388	-3.1%	376	-9.8%	339	-11.2%	301	-31.2%	207	-11.6%	183	-10.4%	164
	WDNY Total YTD	2,978	-14.6%	2,544	-9.8%	2,295	-4.1%	2,201	-0.2%	2,196	-5.9%	2,067	-0.5%	2,056	-31.5%	1,408	-19.4%	1,135	-14.3%	973

U.S. Bankruptcy Court - Western District of New York
 Historical Case Filing Report (All Chapters)
 Month Ending August 31, 2022

		2013	% Change	2014	% Change	2015	% Change	2016	% Change	2017	% Change	2018	% Change	2019	% Change	2020	% Change	2021	% Change	2022
July	Buffalo	283	-17.3%	234	9.4%	257	-30.7%	178	34.8%	240	-11.7%	212	9.0%	231	-33.8%	153	-13.7%	132	-29.5%	93
	Rochester	193	-26.9%	141	-2.8%	137	-21.9%	107	5.6%	113	-8.8%	103	11.7%	115	-18.3%	94	-27.7%	68	-29.4%	48
	WDNY Total Month	476	-21.2%	375	4.8%	394	-27.7%	285	23.9%	353	-10.8%	315	9.8%	346	-28.6%	247	-19.0%	200	-29.5%	141
	WDNY Total YTD	3,454	-15.5%	2,919	-7.9%	2,689	-7.5%	2,486	2.5%	2,549	-6.6%	2,382	0.8%	2,402	-31.1%	1,655	-19.3%	1,335	-16.6%	1,114
Aug	Buffalo	304	-23.4%	233	-8.2%	214	9.8%	235	3.4%	243	-8.2%	223	-11.2%	198	-25.8%	147	-22.4%	114	-31.6%	78
	Rochester	142	-1.4%	140	-10.7%	126	-12.7%	110	10.0%	121	3.3%	125	-12.0%	110	-32.7%	74	-20.3%	59	-18.6%	48
	WDNY Total Month	446	-16.4%	373	-9.1%	340	1.5%	345	5.5%	364	-4.4%	348	-11.5%	308	-28.2%	221	-21.7%	173	-27.2%	126
	WDNY Total YTD	3,900	-15.6%	3,292	-8.0%	3,029	-6.5%	2,831	2.9%	2,913	-6.3%	2,730	-0.7%	2,710	-30.8%	1,876	-19.6%	1,508	-17.8%	1,240
Sep	Buffalo	290	-2.1%	284	0.0%	284	-18.3%	232	13.8%	264	12.9%	298	8.1%	322	-64.0%	116	-8.6%	106		
	Rochester	155	-12.9%	135	-20.0%	108	6.5%	115	1.7%	117	-11.1%	104	1.9%	106	-32.1%	72	-19.4%	58		
	WDNY Total Month	445	-5.8%	419	-6.4%	392	-11.5%	347	9.8%	381	5.5%	402	6.5%	428	-56.1%	188	-12.8%	164		
	WDNY Total YTD	4,345	-14.6%	3,711	-7.9%	3,421	-7.1%	3,178	3.7%	3,294	-4.9%	3,132	0.2%	3,138	-34.2%	2,064	-19.0%	1,672		
Oct	Buffalo	391	-24.0%	297	-11.8%	262	18.7%	311	-13.5%	269	21.6%	327	-18.3%	267	-50.9%	131	-34.4%	86		
	Rochester	139	-12.9%	121	9.9%	133	-13.5%	115	3.5%	119	-2.5%	116	4.3%	121	-43.8%	68	-44.1%	38		
	WDNY Total Month	530	-21.1%	418	-5.5%	395	7.8%	426	-8.9%	388	14.2%	443	-12.4%	388	-48.7%	199	-37.7%	124		
	WDNY Total YTD	4,875	-15.3%	4,129	-7.6%	3,816	-5.6%	3,604	2.2%	3,682	-2.9%	3,575	-1.4%	3,526	-35.8%	2,263	-20.6%	1,796		
Nov	Buffalo	236	-2.5%	230	-7.4%	213	-15.0%	181	20.4%	218	-17.0%	181	6.1%	192	-44.8%	106	-16.0%	89		
	Rochester	134	-5.2%	127	0.0%	127	-1.6%	125	-4.0%	120	0.8%	121	-7.4%	112	-29.5%	79	-43.0%	45		
	WDNY Total Month	370	-3.5%	357	-4.8%	340	-10.0%	306	10.5%	338	-10.7%	302	0.7%	304	-39.1%	185	-27.6%	134		
	WDNY Total YTD	5,245	-14.5%	4,486	-7.4%	4,156	-5.9%	3,910	2.8%	4,020	-3.6%	3,877	-1.2%	3,830	-36.1%	2,448	-21.2%	1,930		
Dec	Buffalo	216	-2.8%	210	-10.5%	189	-23.8%	144	27.8%	184	-21.7%	144	18.1%	170	-29.4%	120	-42.5%	69		
	Rochester	127	15.7%	147	-45.6%	80	28.8%	103	-11.7%	91	5.5%	96	-24.0%	73	-19.2%	59	-22.0%	46		
	WDNY Total Month	343	4.1%	357	-24.9%	269	-8.2%	247	11.3%	275	-12.7%	240	1.3%	243	-26.3%	179	-35.8%	115		
	WDNY Total YTD	5,588	-13.3%	4,843	-8.7%	4,425	-6.1%	4,157	3.3%	4,295	-4.1%	4,117	-1.1%	4,073	-35.5%	2,627	-22.2%	2,045		
		2013	% Change	2014	% Change	2015	% Change	2016	% Change	2017	% Change	2018	% Change	2019	% Change	2020	% Change	2021	% Change	2022
Buffalo Total		3,632	-13.0%	3,161	-7.4%	2,928	-8.2%	2,688	6.6%	2,866	-4.7%	2,732	1.0%	2,760	-39.3%	1,674	-21.3%	1,317		817
Rochester Total		1,956	-14.0%	1,682	-11.0%	1,497	-1.9%	1,469	-2.7%	1,429	-3.1%	1,385	-5.2%	1,313	-27.4%	953	-23.6%	728		423
WDNY Total		5,588	-13.3%	4,843	-8.6%	4,425	-6.1%	4,157	3.3%	4,295	-4.1%	4,117	-1.1%	4,073	-35.5%	2,627	-22.2%	2,045		1,240

		Chapter 7	Chapter 13	Chapter 11	Chapter 12/15	Cases Filed by Month	Cases Filed YTD	Adversary Cases				Case Closings		
								Pending Prior Month	New	Closed Current Month	Net Pending	Cases Closed 2021	Cases Closed 2022	% change
Jan.	Chief Judge Bucki	39	19	1	0	59	59	31	1	2	30	83	81	-2.4%
	Judge Kaplan	1	0	0	0	1	1	33	0	1	32	63	15	-76.2%
	Judge Warren(Buffalo)	19	3	0	0	22	22	0	0	0	0	15	49	226.7%
	Judge Warren(Rochester)	31	11	3	0	45	45	15	0	4	11	77	64	-16.9%
	Buffalo Total	59	22	1	0	82	82	64	1	3	62	161	145	-9.9%
	Rochester Total	31	11	3	0	45	45	15	0	4	11	77	64	-16.9%
	WDNY Total	90	33	4	0	127	127	79	1	7	73	238	209	-12.2%
Feb.	Chief Judge Bucki	42	19	2	0	63	122	30	2	6	26	70	86	22.9%
	Judge Kaplan	0	0	0	0	0	1	32	0	3	29	37	14	-62.2%
	Judge Warren(Buffalo)	22	8	0	0	30	52	0	0	0	0	6	14	133.3%
	Judge Warren(Rochester)	32	16	0	0	48	93	11	72	7	76	92	36	-60.9%
	Buffalo Total	64	27	2	0	93	175	62	2	9	55	113	114	0.9%
	Rochester Total	32	16	0	0	48	93	11	72	7	76	92	36	-60.9%
	WDNY Total	96	43	2	0	141	268	73	74	16	131	205	150	-26.8%
Mar.	Chief Judge Bucki	75	21	1	0	97	219	26	1	0	27	101	81	-19.8%
	Judge Kaplan	0	0	0	0	0	1	29	0	0	29	63	8	-87.3%
	Judge Warren(Buffalo)	27	8	0	0	35	87	0	1	0	1	3	26	766.7%
	Judge Warren(Rochester)	48	15	2	0	65	158	76	2	11	67	77	101	31.2%
	Buffalo Total	102	29	1	0	132	307	55	2	0	57	167	115	-31.1%
	Rochester Total	48	15	2	0	65	158	76	2	11	67	77	101	31.2%
	WDNY Total	150	44	3	0	197	465	131	4	11	124	244	216	-11.5%
Apr.	Chief Judge Bucki	63	26	0	0	89	308	27	2	4	25	105	93	-11.4%
	Judge Kaplan	0	0	0	0	0	1	29	0	0	29	76	2	-97.4%
	Judge Warren(Buffalo)	21	9	0	0	30	117	1	0	0	1	20	24	20.0%
	Judge Warren(Rochester)	40	20	1	0	61	219	67	1	13	55	82	74	-9.8%
	Buffalo Total	84	35	0	0	119	426	56	2	4	54	201	119	-40.8%
	Rochester Total	40	20	1	0	61	219	67	1	13	55	82	74	-9.8%
	WDNY Total	124	55	1	0	180	645	123	3	17	109	283	193	-31.8%

		Chapter 7	Chapter 13	Chapter 11	Chapter 12/15	Cases Filed by Month	Cases Filed YTD	Adversary Cases				Case Closings		
								Pending Prior Month	New	Closed Current Month	Net Pending	Cases Closed 2021	Cases Closed 2022	% change
May	Chief Judge Bucki	49	31	0	0	80	388	25	3	5	23	57	91	59.6%
	Judge Kaplan	0	0	0	0	0	1	29	0	3	26	34	1	-97.1%
	Judge Warren(Buffalo)	21	3	0	0	24	141	1	0	0	1	9	34	277.8%
	Judge Warren(Rochester)	43	11	6	0	60	279	55	2	6	51	59	42	-28.8%
	Buffalo Total	70	34	0	0	104	530	54	3	8	49	100	126	26.0%
	Rochester Total	43	11	6	0	60	279	55	2	6	51	59	42	-28.8%
	WDNY Total	113	45	6	0	164	809	109	5	14	100	159	168	5.7%
June	Chief Judge Bucki	57	23	0	0	80	468	23	1	1	23	115	57	-50.4%
	Judge Kaplan	0	0	0	0	0	1	26	0	2	24	69	1	-98.6%
	Judge Warren(Buffalo)	24	12	0	0	36	177	1	0	0	1	8	19	137.5%
	Judge Warren(Rochester)	33	15	0	0	48	327	51	1	7	45	105	63	-40.0%
	Buffalo Total	81	35	0	0	116	646	49	1	3	47	192	77	-59.9%
	Rochester Total	33	15	0	0	48	327	51	1	7	45	105	63	-40.0%
	WDNY Total	114	50	0	0	164	973	100	2	10	92	297	140	-52.9%
July	Chief Judge Bucki	46	22	1	0	69	537	23	0	4	19	105	100	-4.8%
	Judge Kaplan	0	0	0	0	0	1	24	0	1	23	43	3	-93.0%
	Judge Warren(Buffalo)	21	3	0	0	24	201	1	0	0	1	12	42	250.0%
	Judge Warren(Rochester)	35	13	0	0	48	375	45	0	8	37	86	83	-3.5%
	Buffalo Total	67	25	1	0	93	739	47	0	5	42	160	145	-9.4%
	Rochester Total	35	13	0	0	48	375	45	0	8	37	86	83	-3.5%
	WDNY Total	102	38	1	0	141	1,114	92	0	13	79	246	228	-7.3%
Aug.	Chief Judge Bucki	39	18	0	0	57	594	19	0	2	17	95	134	41.1%
	Judge Kaplan	0	0	0	0	0	1	23	0	3	20	55	4	-92.7%
	Judge Warren (Buffalo)	16	5	0	0	21	222	1	0	0	1	10	13	30.0%
	Judge Warren (Rochester)	36	11	1	0	48	423	37	3	4	36	81	73	-9.9%
	Buffalo Total	55	23	0	0	78	817	42	0	5	37	160	151	-5.6%
	Rochester Total	36	11	1	0	48	423	37	3	4	36	81	73	-9.9%
	WDNY Total	91	34	1	0	126	1,240	79	3	9	73	241	224	-7.1%

U.S. Bankruptcy Court - Western District of New York

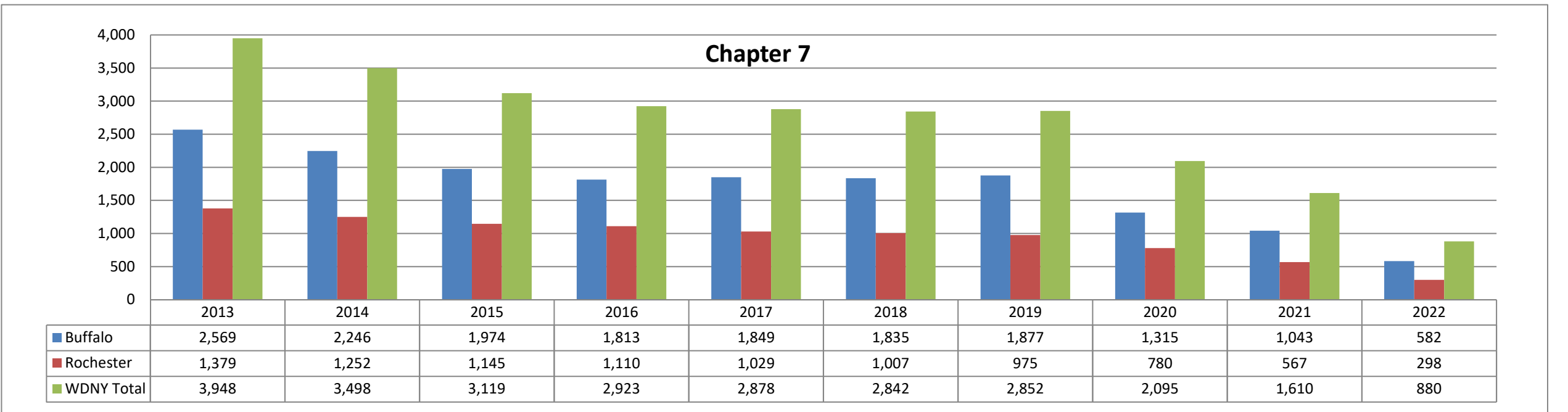
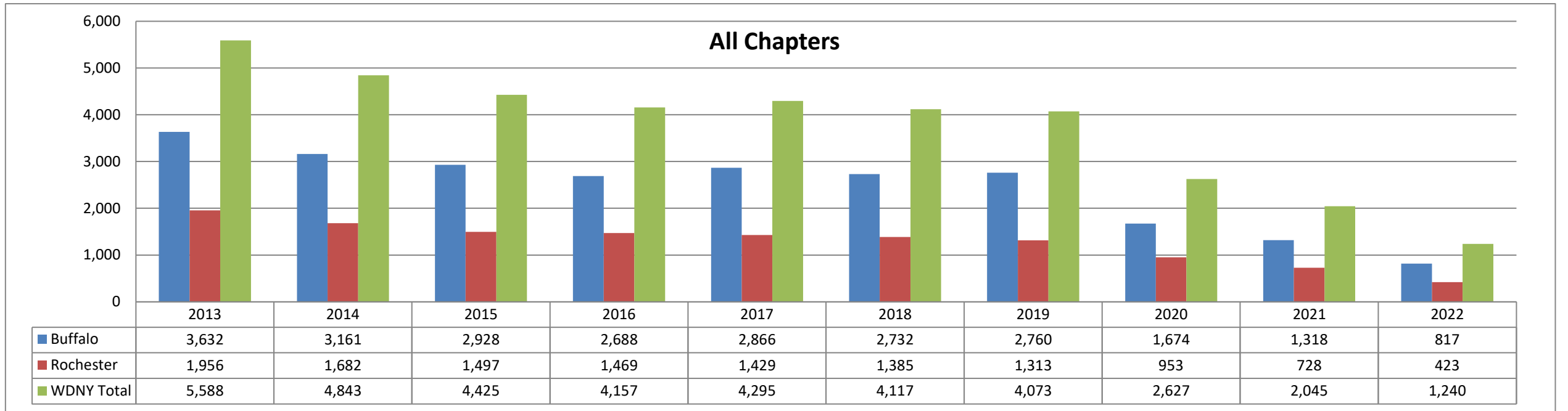
Caseload by Judge, Division & District

Month Ending August 31, 2022

Report # 4

Page 3 of 3

Year to Date	Chapter 7	Chapter 13	Chapter 11	Chapter 12 & 15	YTD Totals All Chapters	Adversary Cases YTD			Case Closings YTD		
						New	Closed	Net Pending	Cases Closed 2021	Cases Closed 2022	% change
Chief Judge Bucki YTD	410	179	5	0	594	10	24	17	731	723	-1.1%
Judge Kaplan YTD	1	0	0	0	1	0	13	20	440	48	-89.1%
Judge Warren (Buff & Roch) YTD	469	163	13	0	645	82	60	37	742	757	2.0%
Judge Warren (Buffalo) YTD	171	51	0	0	222	1	0	1	83	221	166.3%
Judge Warren (Rochester) YTD	298	112	13	0	423	81	60	36	659	536	-18.7%
Buffalo Total YTD	582	230	5	0	817	11	37	37	1,254	992	-20.9%
Rochester Total YTD	298	112	13	0	423	81	60	36	659	536	-18.7%
WDNY Totals YTD	880	342	18	0	1,240	92	97	73	1,913	1,528	-20.1%

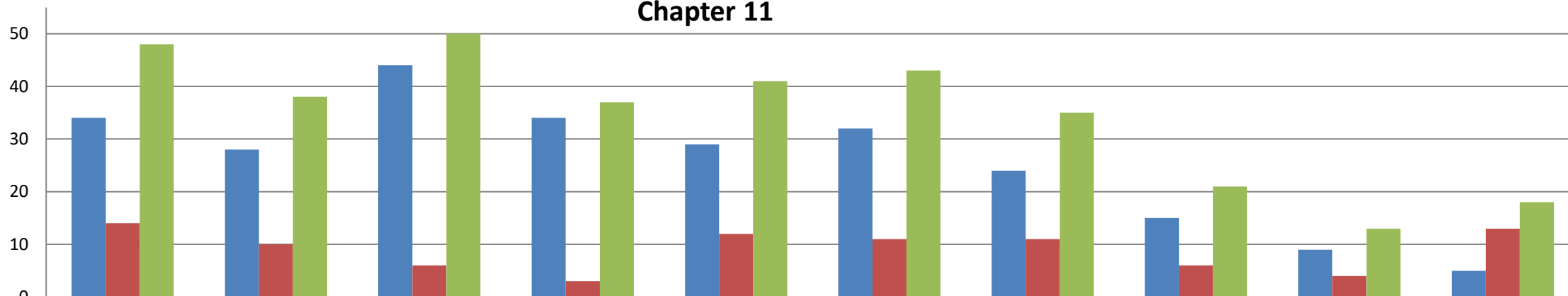


Chapter 13 (includes Chapter 12 & 15)



	2013	2014	2015	2016	2017	2018	2019	2020	2021	2022
Buffalo	1,029	887	909	841	988	865	859	344	265	230
Rochester	563	420	347	356	388	367	327	167	157	112
WDNY Totals	1,592	1,307	1,256	1,197	1,376	1,232	1,186	511	422	342

Chapter 11



	2013	2014	2015	2016	2017	2018	2019	2020	2021	2022
Buffalo	34	28	44	34	29	32	24	15	9	5
Rochester	14	10	6	3	12	11	11	6	4	13
WDNY Totals	48	38	50	37	41	43	35	21	13	18