

U.S. Bankruptcy Court - Western District of New York
Case Filing Report
Month Ending December 31, 2017

Report # 1
Page 1 of 2

		Cases Filed 2016	Cases Filed 2017	% change same month	% change YTD	Chapter 7				Chapter 13				Chapter 11	Ch 12 & 15
						¹ Non-Bus.	² Business	³ Other	Total Ch. 7	¹ Non-Bus.	² Business	³ Other	Total Ch.13		
Jan.	Buffalo	184	205	11.4%	11.4%	130	8	1	139	64	1	0	65	0	1
	Rochester	109	88	-19.3%	-19.3%	52	5	0	57	30	0	0	30	1	0
	WDNY Total Month	293	293	0.0%	0.0%	182	13	1	196	94	1	0	95	1	1
	WDNY Total YTD	293	293			182	13	1	196	94	1	0	95	1	1
Feb.	Buffalo	212	187	-11.8%	-1.0%	120	3	1	124	60	0	0	60	2	1
	Rochester	98	106	8.2%	-6.3%	72	4	2	78	25	1	1	27	1	0
	WDNY Total Month	310	293	-5.5%	-2.8%	192	7	3	202	85	1	1	87	3	1
	WDNY Total YTD	603	586			374	20	4	398	179	2	1	182	4	2
Mar.	Buffalo	255	278	9.0%	2.9%	184	7	0	191	84	1	0	85	2	0
	Rochester	149	145	-2.7%	-4.8%	102	9	0	111	33	0	0	33	1	0
	WDNY Total Month	404	423	4.7%	0.2%	286	16	0	302	117	1	0	118	3	0
	WDNY Total YTD	1,007	1,009			660	36	4	700	296	3	1	300	7	2
Apr.	Buffalo	263	260	-1.1%	1.8%	178	4	0	182	74	2	0	76	2	0
	Rochester	153	125	-18.3%	-8.8%	89	6	1	96	28	1	0	29	0	0
	WDNY Total Month	416	385	-7.5%	-2.0%	267	10	1	278	102	3	0	105	2	0
	WDNY Total YTD	1,423	1,394			927	46	5	978	398	6	1	405	9	2
May	Buffalo	243	281	15.6%	4.7%	186	4	0	190	87	1	0	88	3	0
	Rochester	147	145	-1.4%	-7.2%	109	2	1	112	31	1	0	32	1	0
	WDNY Total Month	390	426	9.2%	0.4%	295	6	1	302	118	2	0	120	4	0
	WDNY Total YTD	1,813	1,820			1,222	52	6	1,280	516	8	1	525	13	2
June	Buffalo	250	237	-5.2%	2.9%	157	4	1	162	73	0	0	73	2	0
	Rochester	138	139	0.7%	-5.8%	95	7	0	102	36	0	0	36	1	0
	WDNY Total Month	388	376	-3.1%	-0.2%	252	11	1	264	109	0	0	109	3	0
	WDNY Total YTD	2,201	2,196			1,474	63	7	1,544	625	8	1	634	16	2
July	Buffalo	178	240	34.8%	6.5%	147	3	0	150	85	2	0	87	2	1
	Rochester	107	113	5.6%	-4.4%	76	3	0	79	32	0	0	32	2	0
	WDNY Total Month	285	353	23.9%	2.5%	223	6	0	229	117	2	0	119	4	1
	WDNY Total YTD	2,486	2,549			1,697	69	7	1,773	742	10	1	753	20	3

¹ Primary "Nature of Debt" is consumer debt. ² Primary "Nature of Debt" is business debt. ³ Primary "Nature of Debt" is other.

U.S. Bankruptcy Court - Western District of New York
Case Filing Report
Month Ending December 31, 2017

		Cases Filed 2016	Cases Filed 2017	% change same month	% change YTD	Chapter 7				Chapter 13				Chapter 11	Ch. 12 & 15
						¹ Non-Bus.	² Business	³ Other	Total Ch. 7	¹ Non-Bus.	² Business	³ Other	Total Ch.13		
Aug.	Buffalo	235	243	3.4%	6.1%	152	7	1	160	78	0	0	78	5	0
	Rochester	110	121	10.0%	-2.9%	86	4	2	92	29	0	0	29	0	0
	WDNY Total Month	345	364	5.5%	2.9%	238	11	3	252	107	0	0	107	5	0
	WDNY Total YTD	2,831	2,913			1,935	80	10	2,025	849	10	1	860	25	3
Sep.	Buffalo	232	264	13.8%	7.0%	128	3	0	131	129	2	0	131	2	0
	Rochester	115	118	2.6%	-2.3%	81	3	0	84	31	2	0	33	1	0
	WDNY Total Month	347	382	10.1%	3.7%	209	6	0	215	160	4	0	164	3	0
	WDNY Total YTD	3,178	3,295			2,144	86	10	2,240	1,009	14	1	1,024	28	3
Oct.	Buffalo	311	269	-13.5%	4.3%	134	2	0	136	118	7	3	128	5	0
	Rochester	115	119	3.5%	-1.8%	78	3	0	81	37	1	0	38	0	0
	WDNY Total Month	426	388	-8.9%	2.2%	212	5	0	217	155	8	3	166	5	0
	WDNY Total YTD	3,604	3,683			2,356	91	10	2,457	1,164	22	4	1,190	33	3
Nov.	Buffalo	181	218	20.4%	5.4%	141	9	0	150	66	0	0	66	2	0
	Rochester	125	120	-4.0%	-2.0%	71	3	1	75	39	4	1	44	0	1
	WDNY Total Month	306	338	10.5%	2.8%	212	12	1	225	105	4	1	110	2	1
	WDNY Total YTD	3,910	4,021			2,568	103	11	2,682	1,269	26	5	1,300	35	4
Dec.	Buffalo	144	184	27.8%	6.6%	132	4	0	136	46	0	0	46	2	0
	Rochester	103	91	-11.7%	-2.7%	60	2	0	62	25	0	0	25	4	0
	WDNY Total Month	247	275	11.3%	3.3%	192	6	0	198	71	0	0	71	6	0
	WDNY Total YTD	4,157	4,296			2,760	109	11	2,880	1,340	26	5	1,371	41	4
Year to Date		Cases Filed 2016	Cases Filed 2017	% change		Chapter 7 YTD				Chapter 13 YTD				Chapter 11 YTD	Chapter 12 & 15 YTD
Buffalo YTD		2,688	2,866	6.6%		1,789	58	4	1,851	964	16	3	983	29	3
Rochester YTD		1,469	1,430	-2.7%		971	51	7	1,029	376	10	2	388	12	1
WDNY YTD		4,157	4,296	3.3%		2,760	109	11	2,880	1,340	26	5	1,371	41	4

¹ Primary "Nature of Debt" is consumer debt. ² Primary "Nature of Debt" is business debt. ³ Primary "Nature of Debt" is other.

U.S. Bankruptcy Court - Western District of New York

Case Filings by County

Month Ending December 31, 2017

Report # 2

Page 1 of 1

Counties in Buffalo Division	Jan.	Feb.	March	April	May	June	July	Aug.	Sept.	Oct.	Nov.	Dec.	County Totals 2017 YTD	% chg from 2016 YTD
(Olean) Allegany	4	9	2	4	6	1	3	4	2	1	6	4	46	-16.4%
(Olean) Cattaraugus	9	10	5	9	11	10	8	9	7	10	7	5	100	-10.7%
Chautauqua	12	18	24	31	24	15	22	13	15	18	20	16	228	9.6%
Erie	133	112	195	163	176	166	164	159	200	198	140	119	1,925	11.9%
(Batavia) Genesee	7	2	3	3	6	8	5	7	6	5	4	3	59	-27.2%
Niagara	35	31	38	40	43	28	34	43	27	32	33	31	415	4.3%
(Batavia) Orleans	4	1	6	3	10	3	1	6	4	2	5	2	47	-29.9%
(Batavia) Wyoming	1	4	5	7	5	6	3	2	2	3	3	4	45	-2.2%
Out of County	0	0	0	0	0	0	0	0	1	0	0	0	1	
2017 Totals	205	187	278	260	281	237	240	243	264	269	218	184	2,866	6.6%

Counties in Rochester Division	Jan.	Feb.	March	April	May	June	July	Aug.	Sept.	Oct.	Nov.	Dec.	County Totals 2017 YTD	% chg from 2016 YTD
(WG) Chemung	4	12	12	8	12	11	9	7	13	9	8	3	108	10.2%
Livingston	1	6	5	3	9	5	3	4	5	4	5	6	56	9.8%
Monroe	55	57	86	80	85	84	76	80	75	75	74	65	892	-5.0%
Ontario	7	9	15	12	15	9	9	10	6	10	13	3	118	4.4%
(WG) Schuyler	3	0	3	1	1	4	0	3	0	1	1	1	18	50.0%
Seneca	1	3	3	2	1	0	0	1	6	4	2	3	26	-35.0%
(WG) Steuben	5	9	11	8	10	16	7	8	4	7	5	4	94	-13.8%
Wayne	12	6	8	11	12	9	9	8	6	8	11	6	106	12.8%
Yates	0	4	2	0	0	1	0	0	3	1	1	0	12	-7.7%
2017 Totals	88	106	145	125	145	139	113	121	118	119	120	91	1,430	-2.7%

WDNY Combined Totals	293	293	423	385	426	376	353	364	382	388	338	275	4,296	3.3%
-----------------------------	------------	------------	------------	------------	------------	------------	------------	------------	------------	------------	------------	------------	--------------	-------------

U.S. Bankruptcy Court - Western District of New York

Historical Case Filing Report (All Chapters)

Month Ending December 31, 2017

		2008	% Change	2009	% Change	2010	% Change	2011	% Change	2012	% Change	2013	% Change	2014	% Change	2015	% Change	2016	% Change	2017
Jan.	Buffalo	419	-8.8%	382	-8.4%	350	-19.7%	281	-3.2%	272	-7.4%	252	-4.0%	242	-22.7%	188	-2.1%	184	11.4%	205
	Rochester	230	-0.9%	228	-16.7%	190	-19.5%	153	-0.7%	152	17.8%	179	-25.1%	134	-1.5%	131	-16.8%	109	-19.3%	88
	WDNY Total Month	649	-6.0%	610	-11.5%	540	-19.6%	434	-2.3%	424	1.7%	431	-12.8%	376	-15.2%	319	-8.2%	293	0.0%	293
	WDNY Total YTD	649	-6.0%	610	-11.5%	540	-19.6%	434	-2.3%	424	1.7%	431	-12.8%	376	-15.2%	319	-8.2%	293	0.0%	293
Feb.	Buffalo	425	-5.9%	400	-8.0%	368	-0.8%	365	-3.8%	351	-22.2%	273	-15.4%	231	-20.3%	184	15.2%	212	-11.8%	187
	Rochester	262	-11.1%	233	-15.0%	198	-1.0%	196	-6.6%	183	-19.1%	148	-29.7%	104	-28.8%	74	32.4%	98	8.2%	106
	WDNY Total Month	687	-7.9%	633	-10.6%	566	-0.9%	561	-4.8%	534	-21.2%	421	-20.4%	335	-23.0%	258	20.2%	310	-5.5%	293
	WDNY Total YTD	1,336	-7.0%	1,243	-11.0%	1,106	-10.0%	995	-3.7%	958	-11.1%	852	-16.5%	711	-18.8%	577	4.5%	603	-2.8%	586
Mar.	Buffalo	518	8.5%	562	10.1%	619	-22.5%	480	-12.7%	419	-5.5%	396	-20.7%	314	-4.5%	300	-15.0%	255	9.0%	278
	Rochester	286	25.2%	358	-7.5%	331	-11.8%	292	-18.8%	237	-27.4%	172	0.0%	172	-23.8%	131	13.7%	149	-2.7%	145
	WDNY Total Month	804	14.4%	920	3.3%	950	-18.7%	772	-15.0%	656	-13.4%	568	-14.4%	486	-11.3%	431	-6.3%	404	4.7%	423
	WDNY Total YTD	2,140	1.1%	2,163	-4.9%	2,056	-14.1%	1,767	-8.7%	1,614	-12.0%	1,420	-15.7%	1,197	-15.8%	1,008	-0.1%	1,007	0.2%	1,009
Apr.	Buffalo	569	13.5%	646	-17.3%	534	-7.5%	494	-25.3%	369	-10.3%	331	-0.9%	328	-5.2%	311	-15.4%	263	-1.1%	260
	Rochester	315	9.5%	345	0.0%	345	-28.4%	247	-10.5%	221	-10.0%	199	-19.1%	161	8.7%	175	-12.6%	153	-18.3%	125
	WDNY Total Month	884	12.1%	991	-11.3%	879	-15.7%	741	-20.4%	590	-10.2%	530	-7.7%	489	-0.6%	486	-14.4%	416	-7.5%	385
	WDNY Total YTD	3,024	4.3%	3,154	-6.9%	2,935	-14.5%	2,508	-12.1%	2,204	-11.5%	1,950	-13.5%	1,686	-11.4%	1,494	-4.8%	1,423	-2.0%	1,394
May	Buffalo	523	1.9%	533	10.7%	590	-30.7%	409	3.2%	422	-20.1%	337	-15.4%	285	0.7%	287	-15.3%	243	15.6%	281
	Rochester	286	11.2%	318	-0.9%	315	-31.4%	216	-0.9%	214	-4.2%	205	-15.1%	174	-18.4%	142	3.5%	147	-1.4%	145
	WDNY Total Month	809	5.2%	851	6.3%	905	-30.9%	625	1.8%	636	-14.8%	542	-15.3%	459	-6.5%	429	-9.1%	390	9.2%	426
	WDNY Total YTD	3,833	4.5%	4,005	-4.1%	3,840	-18.4%	3,133	-9.4%	2,840	-12.3%	2,492	-13.9%	2,145	-10.3%	1,923	-5.7%	1,813	0.4%	1,820
June	Buffalo	487	21.6%	592	-7.6%	547	-21.9%	427	-14.8%	364	-11.3%	323	-15.5%	273	-12.5%	239	4.6%	250	-5.2%	237
	Rochester	302	-1.0%	299	-5.0%	284	-13.4%	246	-36.6%	156	4.5%	163	-22.7%	126	5.6%	133	3.8%	138	0.7%	139
	WDNY Total Month	789	12.9%	891	-6.7%	831	-19.0%	673	-22.7%	520	-6.5%	486	-17.9%	399	-6.8%	372	4.3%	388	-3.1%	376
	WDNY Total YTD	4,622	5.9%	4,896	-4.6%	4,671	-18.5%	3,806	-11.7%	3,360	-11.4%	2,978	-14.6%	2,544	-9.8%	2,295	-4.1%	2,201	-0.2%	2,196

U.S. Bankruptcy Court - Western District of New York

Historical Case Filing Report (All Chapters)

Month Ending December 31, 2017

		2008	% Change	2009	% Change	2010	% Change	2011	% Change	2012	% Change	2013	% Change	2014	% Change	2015	% Change	2016	% Change	2017
July	Buffalo	521	9.4%	570	-15.1%	484	-33.5%	322	1.9%	328	-13.7%	283	-17.3%	234	9.4%	257	-30.7%	178	34.8%	240
	Rochester	324	-11.4%	287	-13.6%	248	-23.8%	189	-5.8%	178	8.4%	193	-26.9%	141	-2.8%	137	-21.9%	107	5.6%	113
	WDNY Total Month	845	1.4%	857	-14.6%	732	-30.2%	511	-1.0%	506	-5.9%	476	-21.2%	375	4.8%	394	-27.7%	285	23.9%	353
	WDNY Total YTD	5,467	5.2%	5,753	-6.1%	5,403	-20.1%	4,317	-10.4%	3,866	-10.7%	3,454	-15.5%	2,919	-7.9%	2,689	-7.5%	2,486	2.5%	2,549
Aug	Buffalo	474	16.0%	550	-15.5%	465	-16.6%	388	-7.2%	360	-15.6%	304	-23.4%	233	-8.2%	214	9.8%	235	3.4%	243
	Rochester	329	-12.5%	288	-1.4%	284	-25.0%	213	-16.0%	179	-20.7%	142	-1.4%	140	-10.7%	126	-12.7%	110	10.0%	121
	WDNY Total Month	803	4.4%	838	-10.6%	749	-19.8%	601	-10.3%	539	-17.3%	446	-16.4%	373	-9.1%	340	1.5%	345	5.5%	364
	WDNY Total YTD	6,270	5.1%	6,591	-6.6%	6,153	-20.1%	4,919	-10.4%	4,405	-11.5%	3,900	-15.6%	3,292	-8.0%	3,029	-6.5%	2,831	2.9%	2,913
Sep	Buffalo	511	-7.0%	475	-5.7%	448	-6.3%	420	-39.0%	256	13.3%	290	-2.1%	284	0.0%	284	-18.3%	232	13.8%	264
	Rochester	294	-2.7%	286	-9.4%	259	-29.7%	182	-26.4%	134	15.7%	155	-12.9%	135	-20.0%	108	6.5%	115	2.6%	118
	WDNY Total Month	805	-5.5%	761	-7.1%	707	-14.9%	602	-35.2%	390	14.1%	445	-5.8%	419	-6.4%	392	-11.5%	347	10.1%	382
	WDNY Total YTD	7,075	3.9%	7,352	-6.7%	6,860	-19.5%	5,522	-13.2%	4,795	-9.4%	4,345	-14.6%	3,711	-7.9%	3,421	-7.1%	3,178	3.7%	3,295
Oct	Buffalo	533	11.4%	594	-21.2%	468	-22.6%	362	13.3%	410	-4.6%	391	-24.0%	297	-11.8%	262	18.7%	311	-13.5%	269
	Rochester	323	0.0%	323	-21.7%	253	-32.0%	172	-5.8%	162	-14.2%	139	-12.9%	121	9.9%	133	-13.5%	115	3.5%	119
	WDNY Total Month	856	7.1%	917	-21.4%	721	-25.9%	534	7.1%	572	-7.3%	530	-21.1%	418	-5.5%	395	7.8%	426	-8.9%	388
	WDNY Total YTD	7,931	4.3%	8,269	-8.3%	7,581	-20.1%	6,055	-11.4%	5,367	-9.2%	4,875	-15.3%	4,129	-7.6%	3,816	-5.6%	3,604	2.2%	3,683
Nov	Buffalo	383	29.0%	494	-13.0%	430	-22.3%	334	-20.7%	265	-10.9%	236	-2.5%	230	-7.4%	213	-15.0%	181	20.4%	218
	Rochester	243	17.7%	286	-25.2%	214	-7.9%	197	-18.8%	160	-16.3%	134	-5.2%	127	0.0%	127	-1.6%	125	-4.0%	120
	WDNY Total Month	626	24.6%	780	-17.4%	644	-17.5%	531	-20.0%	425	-12.9%	370	-3.5%	357	-4.8%	340	-10.0%	306	10.5%	338
	WDNY Total YTD	8,557	5.7%	9,049	-9.1%	8,225	-19.9%	6,585	-12.0%	5,792	-9.4%	5,245	-14.5%	4,486	-7.4%	4,156	-5.9%	3,910	2.8%	4,021
Dec	Buffalo	385	14.3%	440	-23.6%	336	-2.4%	328	-20.7%	260	-16.9%	216	-2.8%	210	-10.5%	189	-23.8%	144	27.8%	184
	Rochester	237	1.3%	240	-16.3%	201	-13.4%	174	-19.5%	140	-9.3%	127	15.7%	147	-45.6%	80	28.8%	103	-11.7%	91
	WDNY Total Month	622	9.3%	680	-21.0%	537	-6.5%	502	-20.3%	400	-14.3%	343	4.1%	357	-24.9%	269	-8.2%	247	11.3%	275
	WDNY Total YTD	9,179	6.0%	9,729	-9.9%	8,762	-19.1%	7,087	-12.6%	6,192	-9.8%	5,588	-13.3%	4,843	-8.7%	4,425	-6.1%	4,157	3.3%	4,296
		2008	% Change	2009	% Change	2010	% Change	2011	% Change	2012	% Change	2013	% Change	2014	% Change	2015	% Change	2016	% Change	2017
	Buffalo Total	5,748	8.5%	6,238	-9.6%	5,639	-18.2%	4,610	-11.6%	4,076	-10.9%	3,632	-13.0%	3,161	-7.4%	2,928	-8.2%	2,688	6.6%	2,866
	Rochester Total	3,431	1.7%	3,491	-10.6%	3,122	-20.7%	2,477	-14.6%	2,116	-7.6%	1,956	-14.0%	1,682	-11.0%	1,497	-1.9%	1,469	-2.7%	1,430
	WDNY Total	9,179	6.0%	9,729	-9.9%	8,761	-19.1%	7,087	-12.6%	6,192	-9.8%	5,588	-13.3%	4,843	-8.6%	4,425	-6.1%	4,157	3.3%	4,296

		Chapter 7	Chapter 13	Chapter 11	Chapter 12/15	Cases Filed by Month	Cases Filed YTD	Adversary Cases				Case Closings		
								Pending Prior Month	New	Closed Current Month	Net Pending	Cases Closed 2016	Cases Closed 2017	% change
Jan.	Chief Judge Bucki	59	40	0	1	100	100	35	3	10	28	163	131	-19.6%
	Judge Kaplan	80	25	0	0	105	105	114	0	10	104	116	131	12.9%
	Judge Warren	57	30	1	0	88	88	11	1	1	11	97	129	33.0%
	Buffalo Total	139	65	0	1	205	205	149	3	20	132	279	262	-6.1%
	Rochester Total	57	30	1	0	88	88	11	1	1	11	97	129	33.0%
	WDNY Total	196	95	1	1	293	293	160	4	21	143	376	391	4.0%
Feb.	Chief Judge Bucki	80	21	1	1	103	203	28	2	1	29	116	125	7.8%
	Judge Kaplan	44	39	1	0	84	189	104	1	2	103	149	104	-30.2%
	Judge Warren	78	27	1	0	106	194	11	1	0	12	200	120	-40.0%
	Buffalo Total	124	60	2	1	187	392	132	3	3	132	265	229	-13.6%
	Rochester Total	78	27	1	0	106	194	11	1	0	12	200	120	-40.0%
	WDNY Total	202	87	3	1	293	586	143	4	3	144	465	349	-24.9%
Mar.	Chief Judge Bucki	89	42	0	0	131	334	29	3	3	29	152	99	-34.9%
	Judge Kaplan	102	43	2	0	147	336	103	1	18	86	135	111	-17.8%
	Judge Warren	111	33	1	0	145	339	12	1	0	13	154	120	-22.1%
	Buffalo Total	191	85	2	0	278	670	132	4	21	115	287	210	-26.8%
	Rochester Total	111	33	1	0	145	339	12	1	0	13	154	120	-22.1%
	WDNY Total	302	118	3	0	423	1,009	144	5	21	128	441	330	-25.2%
Apr.	Chief Judge Bucki	95	46	1	0	142	476	29	7	2	34	131	106	-19.1%
	Judge Kaplan	87	30	1	0	118	454	86	1	1	86	137	109	-20.4%
	Judge Warren	96	29	0	0	125	464	13	4	0	17	141	90	-36.2%
	Buffalo Total	182	76	2	0	260	930	115	8	3	120	268	215	-19.8%
	Rochester Total	96	29	0	0	125	464	13	4	0	17	141	90	-36.2%
	WDNY Total	278	105	2	0	385	1,394	128	12	3	137	409	305	-25.4%
May	Chief Judge Bucki	97	30	2	0	129	605	34	3	1	36	117	127	8.5%
	Judge Kaplan	93	58	1	0	152	606	86	0	6	80	141	125	-11.3%
	Judge Warren	112	32	1	0	145	609	17	3	1	19	172	75	-56.4%
	Buffalo Total	190	88	3	0	281	1,211	120	3	7	116	258	252	-2.3%
	Rochester Total	112	32	1	0	145	609	17	3	1	19	172	75	-56.4%
	WDNY Total	302	120	4	0	426	1,820	137	6	8	135	430	327	-24.0%

U.S. Bankruptcy Court - Western District of New York

Caseload by Judge, Division & District

Month Ending December 31, 2017

Report #4

Page 2 of 3

		Chapter 7	Chapter 13	Chapter 11	Chapter 12/15	Cases Filed by Month	Cases Filed YTD	Adversary Cases				Case Closings		
								Pending Prior Month	New	Closed Current Month	Net Pending	Cases Closed 2016	Cases Closed 2017	% change
June	Chief Judge Bucki	64	38	1	0	103	708	36	2	3	35	120	125	4.2%
	Judge Kaplan	98	35	1	0	134	740	80	3	3	80	131	113	-13.7%
	Judge Warren	102	36	1	0	139	748	19	2	1	20	162	247	52.5%
	Buffalo Total	162	73	2	0	237	1,448	116	5	6	115	251	238	-5.2%
	Rochester Total	102	36	1	0	139	748	19	2	1	20	162	247	52.5%
	WDNY Total	264	109	3	0	376	2,196	135	7	7	135	413	485	17.4%
July	Chief Judge Bucki	85	58	2	1	146	854	35	0	1	34	166	108	-34.9%
	Judge Kaplan	64	30	0	0	94	834	80	0	0	80	158	126	-20.3%
	Judge Warren	79	32	2	0	113	861	20	1	1	20	160	88	-45.0%
	Buffalo Total	149	88	2	1	240	1,688	115	0	1	114	324	234	-27.8%
	Rochester Total	79	32	2	0	113	861	20	1	1	20	160	88	-45.0%
	WDNY Total	228	120	4	1	353	2,549	135	1	2	134	484	322	-33.5%
Aug.	Chief Judge Bucki	75	34	4	0	113	967	34	4	2	36	141	183	29.8%
	Judge Kaplan	85	44	1	0	130	964	80	17	3	94	157	142	-9.6%
	Judge Warren	92	29	0	0	121	982	20	1	0	21	103	144	39.8%
	Buffalo Total	160	78	5	0	243	1,931	114	21	5	130	298	325	9.1%
	Rochester Total	92	29	0	0	121	982	20	1	0	21	103	144	39.8%
	WDNY Total	252	107	5	0	364	2,913	134	22	5	151	401	469	17.0%
Sep.	Chief Judge Bucki	66	74	1	0	141	1,108	36	1	3	34	172	181	5.2%
	Judge Kaplan	65	57	1	0	123	1,087	94	3	1	96	147	167	13.6%
	Judge Warren	84	33	1	0	118	1,100	21	1	3	19	231	177	-23.4%
	Buffalo Total	131	131	2	0	264	2,195	130	4	4	130	319	348	9.1%
	Rochester Total	84	33	1	0	118	1,100	21	1	3	19	231	177	-23.4%
	WDNY Total	215	164	3	0	382	3,295	151	5	7	149	550	525	-4.5%

U.S. Bankruptcy Court - Western District of New York

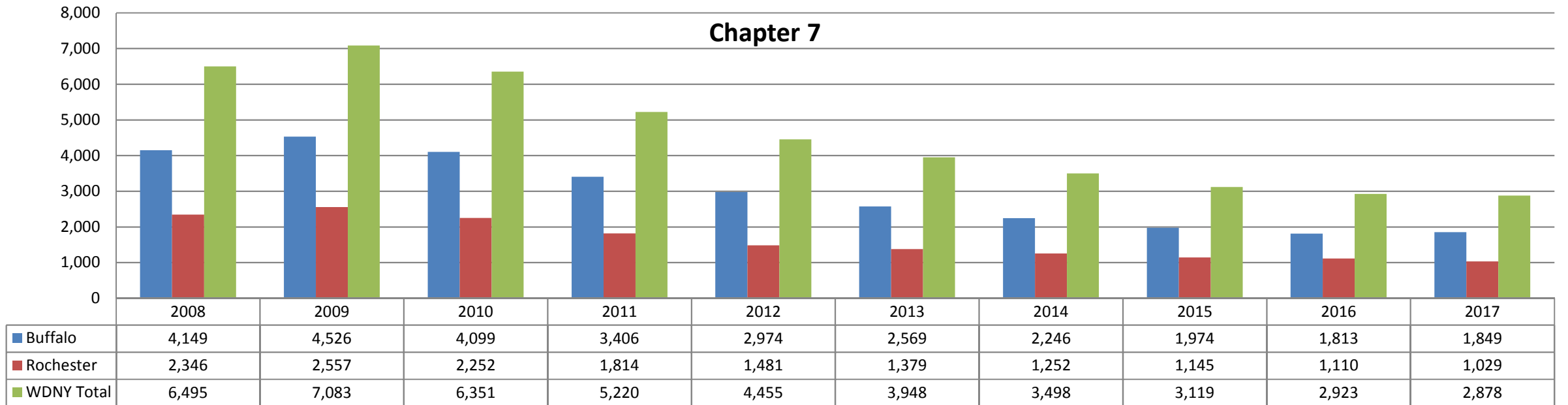
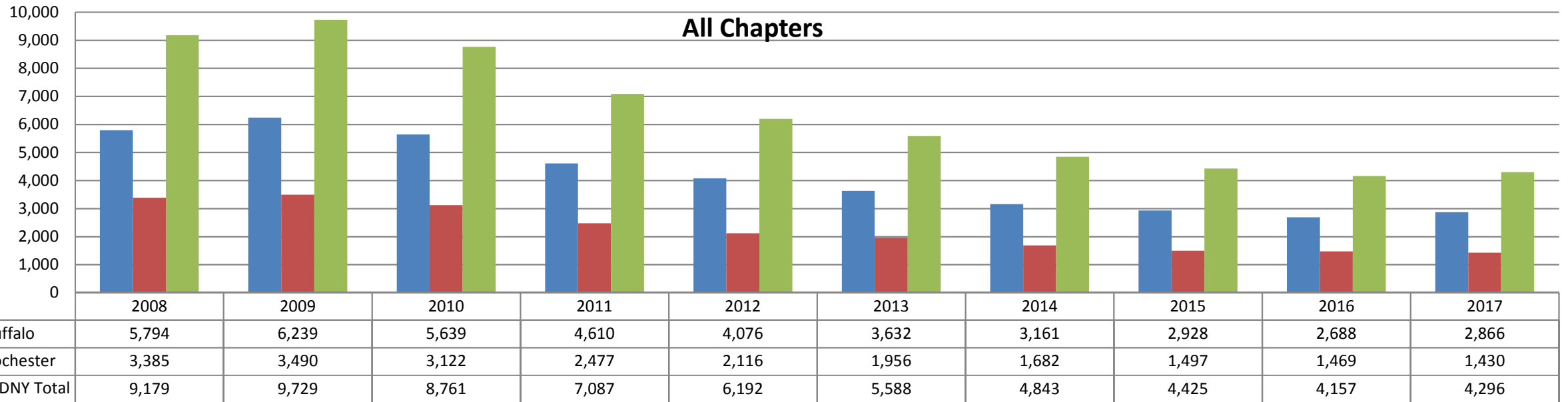
Caseload by Judge, Division & District

Month Ending December 31, 2017

Report #4

Page 3 of 3

		Chapter 7	Chapter 13	Chapter 11	Chapter 12/15	Cases Filed by Month	Cases Filed YTD	Adversary Cases				Case Closings		
								Pending Prior Month	New	Closed Current Month	Net Pending	Cases Closed 2016	Cases Closed 2017	% change
Oct.	Chief Judge Bucki	70	54	2	0	126	1,234	34	1	4	31	125	110	-12.0%
	Judge Kaplan	66	74	3	0	143	1,230	96	1	1	96	126	120	-4.8%
	Judge Warren	81	38	0	0	119	1,219	19	1	5	15	113	134	18.6%
	Buffalo Total	136	128	5	0	269	2,464	130	2	5	127	251	230	-8.4%
	Rochester Total	81	38	0	0	119	1,219	19	1	5	15	113	134	18.6%
	WDNY Total	217	166	5	0	388	3,683	149	3	10	142	364	364	0.0%
Nov.	Chief Judge Bucki	75	36	1	0	112	1,346	31	1	0	32	116	125	7.8%
	Judge Kaplan	74	31	1	0	106	1,336	96	3	3	96	113	98	-13.3%
	Judge Warren	75	44	0	1	120	1,339	15	0	5	10	162	148	-8.6%
	Buffalo Total	149	67	2	0	218	2,682	127	4	3	128	229	223	-2.6%
	Rochester Total	75	44	0	1	120	1,339	15	0	5	10	162	148	-8.6%
	WDNY Total	224	111	2	1	338	4,021	142	4	8	138	391	371	-5.1%
Dec.	Chief Judge Bucki	71	22	1	0	94	1,440	32	18	1	49	122	95	-22.1%
	Judge Kaplan	65	24	1	0	90	1,426	96	4	7	93	143	97	-32.2%
	Judge Warren	62	25	4	0	91	1,430	10	2	1	11	158	134	-15.2%
	Buffalo Total	136	46	2	0	184	2,866	128	22	8	142	265	192	-27.5%
	Rochester Total	62	25	4	0	91	1,430	10	2	1	11	158	134	-15.2%
	WDNY Total	198	71	6	0	275	4,296	138	24	9	153	423	326	-22.9%
Year to Date	Chapter 7	Chapter 13	Chapter 11	Chapter 12 & 15	YTD Totals All Chapters		Adversary Cases YTD				Case Closings YTD			
							New	Closed	Net Pending		Cases Closed 2016	Cases Closed 2017	% change	
Chief Judge Bucki YTD	926	495	16	3	1,440		45	31	49		1,641	1,515	-7.7%	
Judge Kaplan YTD	923	490	13	0	1,426		34	55	93		1,653	1,443	-12.7%	
Judge Warren YTD	1,029	388	12	1	1,430		18	18	11		1,853	1,606	-13.3%	
Buffalo Total YTD	1,849	985	29	3	2,866		79	86	142		3,294	2,958	-10.2%	
Rochester Total YTD	1029	388	12	1	1,430		18	18	11		1,853	1,606	-13.3%	
WDNY Totals YTD	2,878	1,373	41	4	4,296		97	104	153		5,147	4,564	-11.3%	

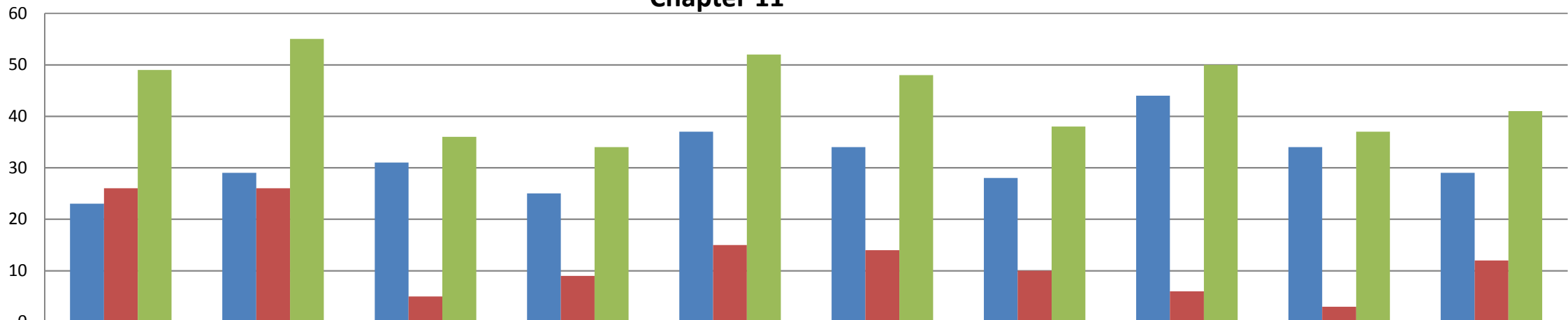


Chapter 13 (includes Chapter 12 & 15)



	2008	2009	2010	2011	2012	2013	2014	2015	2016	2017
Buffalo	1,617	1,684	1,509	1,179	1,065	1,029	887	909	841	988
Rochester	1,013	907	865	654	620	563	420	347	356	389
WDNY Totals	2,630	2,591	2,374	1,833	1,685	1,592	1,307	1,256	1,197	1,377

Chapter 11



	2008	2009	2010	2011	2012	2013	2014	2015	2016	2017
Buffalo	23	29	31	25	37	34	28	44	34	29
Rochester	26	26	5	9	15	14	10	6	3	12
WDNY Totals	49	55	36	34	52	48	38	50	37	41