

U.S. Bankruptcy Court - Western District of New York

Case Filing Report

Month Ending January 31, 2018

Report # 1

Page 1 of 1

		Cases Filed 2017	Cases Filed 2018	% change same month	% change YTD	Chapter 7				Chapter 13				Chapter 11	Ch 12 & 15
						¹ Non-Bus.	² Business	³ Other	Total Ch. 7	¹ Non-Bus.	² Business	³ Other	Total Ch.13		
Jan.	Buffalo	205	188	-8.3%	-8.3%	121	4	1	126	61	1	0	62	0	0
	Rochester	88	100	13.6%	13.6%	70	3	0	73	22	2	0	24	3	0
	WDNY Total Month	293	288	-1.7%	-1.7%	191	7	1	199	83	3	0	86	3	0
	WDNY Total YTD	293	288			191	7	1	199	83	3	0	86	3	0
Year to Date															
		Cases Filed 2017	Cases Filed 2018	% change		Chapter 7 YTD				Chapter 13 YTD				Chapter 11 YTD	Chapter 12 & 15 YTD
						¹ Non-Bus.	² Business	³ Other	Total Ch. 7	¹ Non-Bus.	² Business	³ Other	Total Ch.13		
Buffalo YTD		205	188	-8.3%		121	4	1	126	61	1	0	62	0	0
Rochester YTD		88	100	13.6%		70	3	0	73	22	2	0	24	3	0
WDNY YTD		293	288	-1.7%		191	7	1	199	83	3	0	86	3	0

¹ Primary "Nature of Debt" is consumer debt.

² Primary "Nature of Debt" is business debt.

³ Primary "Nature of Debt" is other.

U.S. Bankruptcy Court - Western District of New York
Case Filings by County
Month Ending January 31, 2018

Report # 2
Page 1 of 1

Counties in Division	Buffalo	Jan.	Feb.	March	April	May	June	July	Aug.	Sept.	Oct.	Nov.	Dec.	County Totals 2018 YTD	% chg from 2017 YTD
(Olean)	Allegany	1												1	-75.0%
(Olean)	Cattaraugus	8												8	-11.1%
	Chautauqua	13												13	8.3%
	Erie	123												123	-7.5%
(Batavia)	Genesee	7												7	0.0%
	Niagara	26												26	-25.7%
(Batavia)	Orleans	7												7	75.0%
(Batavia)	Wyoming	3												3	200.0%
	Out of County	0												0	
2018 Totals		188	0	0	0	0	0	0	0	0	0	0	0	188	-8.3%
Counties in Division	Rochester	Jan.	Feb.	March	April	May	June	July	Aug.	Sept.	Oct.	Nov.	Dec.	County Totals 2018 YTD	% chg from 2017 YTD
(WG)	Chemung	8												8	100.0%
	Livingston	2												2	100.0%
	Monroe	75												75	36.4%
	Ontario	5												5	-28.6%
(WG)	Schuyler	1												1	-66.7%
	Seneca	4												4	300.0%
(WG)	Steuben	2												2	-60.0%
	Wayne	3												3	-75.0%
	Yates	0												0	0.0%
2018 Totals		100	0	0	0	0	0	0	0	0	0	0	0	100	13.6%
WDNY Combined Totals		288	0	0	0	0	0	0	0	0	0	0	0	288	-1.7%

U.S. Bankruptcy Court - Western District of New York

Historical Case Filing Report (All Chapters)

Month Ending January 31, 2018

		2009	% Change	2010	% Change	2011	% Change	2012	% Change	2013	% Change	2014	% Change	2015	% Change	2016	% Change	2017	% Change	2018
Jan.	Buffalo	382	-8.4%	350	-19.7%	281	-3.2%	272	-7.4%	252	-4.0%	242	-22.7%	188	-2.1%	184	11.4%	205	-8.3%	188
	Rochester	228	-16.7%	190	-19.5%	153	-0.7%	152	17.8%	179	-25.1%	134	-1.5%	131	-16.8%	109	-19.3%	88	13.6%	100
	WDNY Total Month	610	-11.5%	540	-19.6%	434	-2.3%	424	1.7%	431	-12.8%	376	-15.2%	319	-8.2%	293	0.0%	293	-1.7%	288
	WDNY Total YTD	610	-11.5%	540	-19.6%	434	-2.3%	424	1.7%	431	-12.8%	376	-15.2%	319	-8.2%	293	0.0%	293	-1.7%	288
Feb.	Buffalo	400	-8.0%	368	-0.8%	365	-3.8%	351	-22.2%	273	-15.4%	231	-20.3%	184	15.2%	212	-11.8%	187		
	Rochester	233	-15.0%	198	-1.0%	196	-6.6%	183	-19.1%	148	-29.7%	104	-28.8%	74	32.4%	98	8.2%	106		
	WDNY Total Month	633	-10.6%	566	-0.9%	561	-4.8%	534	-21.2%	421	-20.4%	335	-23.0%	258	20.2%	310	-5.5%	293		
	WDNY Total YTD	1,243	-11.0%	1,106	-10.0%	995	-3.7%	958	-11.1%	852	-16.5%	711	-18.8%	577	4.5%	603	-2.8%	586		
Mar.	Buffalo	562	10.1%	619	-22.5%	480	-12.7%	419	-5.5%	396	-20.7%	314	-4.5%	300	-15.0%	255	9.0%	278		
	Rochester	358	-7.5%	331	-11.8%	292	-18.8%	237	-27.4%	172	0.0%	172	-23.8%	131	13.7%	149	-2.7%	145		
	WDNY Total Month	920	3.3%	950	-18.7%	772	-15.0%	656	-13.4%	568	-14.4%	486	-11.3%	431	-6.3%	404	4.7%	423		
	WDNY Total YTD	2,163	-4.9%	2,056	-14.1%	1,767	-8.7%	1,614	-12.0%	1,420	-15.7%	1,197	-15.8%	1,008	-0.1%	1,007	0.2%	1,009		
Apr.	Buffalo	646	-17.3%	534	-7.5%	494	-25.3%	369	-10.3%	331	-0.9%	328	-5.2%	311	-15.4%	263	-1.1%	260		
	Rochester	345	0.0%	345	-28.4%	247	-10.5%	221	-10.0%	199	-19.1%	161	8.7%	175	-12.6%	153	-18.3%	125		
	WDNY Total Month	991	-11.3%	879	-15.7%	741	-20.4%	590	-10.2%	530	-7.7%	489	-0.6%	486	-14.4%	416	-7.5%	385		
	WDNY Total YTD	3,154	-6.9%	2,935	-14.5%	2,508	-12.1%	2,204	-11.5%	1,950	-13.5%	1,686	-11.4%	1,494	-4.8%	1,423	-2.0%	1,394		
May	Buffalo	533	10.7%	590	-30.7%	409	3.2%	422	-20.1%	337	-15.4%	285	0.7%	287	-15.3%	243	15.6%	281		
	Rochester	318	-0.9%	315	-31.4%	216	-0.9%	214	-4.2%	205	-15.1%	174	-18.4%	142	3.5%	147	-1.4%	145		
	WDNY Total Month	851	6.3%	905	-30.9%	625	1.8%	636	-14.8%	542	-15.3%	459	-6.5%	429	-9.1%	390	9.2%	426		
	WDNY Total YTD	4,005	-4.1%	3,840	-18.4%	3,133	-9.4%	2,840	-12.3%	2,492	-13.9%	2,145	-10.3%	1,923	-5.7%	1,813	0.4%	1,820		
June	Buffalo	592	-7.6%	547	-21.9%	427	-14.8%	364	-11.3%	323	-15.5%	273	-12.5%	239	4.6%	250	-5.2%	237		
	Rochester	299	-5.0%	284	-13.4%	246	-36.6%	156	4.5%	163	-22.7%	126	5.6%	133	3.8%	138	0.7%	139		
	WDNY Total Month	891	-6.7%	831	-19.0%	673	-22.7%	520	-6.5%	486	-17.9%	399	-6.8%	372	4.3%	388	-3.1%	376		
	WDNY Total YTD	4,896	-4.6%	4,671	-18.5%	3,806	-11.7%	3,360	-11.4%	2,978	-14.6%	2,544	-9.8%	2,295	-4.1%	2,201	-0.2%	2,196		

U.S. Bankruptcy Court - Western District of New York

Historical Case Filing Report (All Chapters)

Month Ending January 31, 2018

		2009	% Change	2010	% Change	2011	% Change	2012	% Change	2013	% Change	2014	% Change	2015	% Change	2016	% Change	2017	% Change	2018
July	Buffalo	570	-15.1%	484	-33.5%	322	1.9%	328	-13.7%	283	-17.3%	234	9.4%	257	-30.7%	178	34.8%	240		
	Rochester	287	-13.6%	248	-23.8%	189	-5.8%	178	8.4%	193	-26.9%	141	-2.8%	137	-21.9%	107	5.6%	113		
	WDNY Total Month	857	-14.6%	732	-30.2%	511	-1.0%	506	-5.9%	476	-21.2%	375	4.8%	394	-27.7%	285	23.9%	353		
	WDNY Total YTD	5,753	-6.1%	5,403	-20.1%	4,317	-10.4%	3,866	-10.7%	3,454	-15.5%	2,919	-7.9%	2,689	-7.5%	2,486	2.5%	2,549		
Aug	Buffalo	550	-15.5%	465	-16.6%	388	-7.2%	360	-15.6%	304	-23.4%	233	-8.2%	214	9.8%	235	3.4%	243		
	Rochester	288	-1.4%	284	-25.0%	213	-16.0%	179	-20.7%	142	-1.4%	140	-10.7%	126	-12.7%	110	10.0%	121		
	WDNY Total Month	838	-10.6%	749	-19.8%	601	-10.3%	539	-17.3%	446	-16.4%	373	-9.1%	340	1.5%	345	5.5%	364		
	WDNY Total YTD	6,591	-6.6%	6,153	-20.1%	4,919	-10.4%	4,405	-11.5%	3,900	-15.6%	3,292	-8.0%	3,029	-6.5%	2,831	2.9%	2,913		
Sep	Buffalo	475	-5.7%	448	-6.3%	420	-39.0%	256	13.3%	290	-2.1%	284	0.0%	284	-18.3%	232	13.8%	264		
	Rochester	286	-9.4%	259	-29.7%	182	-26.4%	134	15.7%	155	-12.9%	135	-20.0%	108	6.5%	115	2.6%	118		
	WDNY Total Month	761	-7.1%	707	-14.9%	602	-35.2%	390	14.1%	445	-5.8%	419	-6.4%	392	-11.5%	347	10.1%	382		
	WDNY Total YTD	7,352	-6.7%	6,860	-19.5%	5,522	-13.2%	4,795	-9.4%	4,345	-14.6%	3,711	-7.9%	3,421	-7.1%	3,178	3.7%	3,295		
Oct	Buffalo	594	-21.2%	468	-22.6%	362	13.3%	410	-4.6%	391	-24.0%	297	-11.8%	262	18.7%	311	-13.5%	269		
	Rochester	323	-21.7%	253	-32.0%	172	-5.8%	162	-14.2%	139	-12.9%	121	9.9%	133	-13.5%	115	3.5%	119		
	WDNY Total Month	917	-21.4%	721	-25.9%	534	7.1%	572	-7.3%	530	-21.1%	418	-5.5%	395	7.8%	426	-8.9%	388		
	WDNY Total YTD	8,269	-8.3%	7,581	-20.1%	6,055	-11.4%	5,367	-9.2%	4,875	-15.3%	4,129	-7.6%	3,816	-5.6%	3,604	2.2%	3,683		
Nov	Buffalo	494	-13.0%	430	-22.3%	334	-20.7%	265	-10.9%	236	-2.5%	230	-7.4%	213	-15.0%	181	20.4%	218		
	Rochester	286	-25.2%	214	-7.9%	197	-18.8%	160	-16.3%	134	-5.2%	127	0.0%	127	-1.6%	125	-4.0%	120		
	WDNY Total Month	780	-17.4%	644	-17.5%	531	-20.0%	425	-12.9%	370	-3.5%	357	-4.8%	340	-10.0%	306	10.5%	338		
	WDNY Total YTD	9,049	-9.1%	8,225	-19.9%	6,585	-12.0%	5,792	-9.4%	5,245	-14.5%	4,486	-7.4%	4,156	-5.9%	3,910	2.8%	4,021		
Dec	Buffalo	440	-23.6%	336	-2.4%	328	-20.7%	260	-16.9%	216	-2.8%	210	-10.5%	189	-23.8%	144	27.8%	184		
	Rochester	240	-16.3%	201	-13.4%	174	-19.5%	140	-9.3%	127	15.7%	147	-45.6%	80	28.8%	103	-11.7%	91		
	WDNY Total Month	680	-21.0%	537	-6.5%	502	-20.3%	400	-14.3%	343	4.1%	357	-24.9%	269	-8.2%	247	11.3%	275		
	WDNY Total YTD	9,729	-9.9%	8,762	-19.1%	7,087	-12.6%	6,192	-9.8%	5,588	-13.3%	4,843	-8.7%	4,425	-6.1%	4,157	3.3%	4,296		
		2009	% Change	2010	% Change	2011	% Change	2012	% Change	2013	% Change	2014	% Change	2015	% Change	2016	% Change	2017	% Change	2018
	Buffalo Total	6,238	-9.6%	5,639	-18.2%	4,610	-11.6%	4,076	-10.9%	3,632	-13.0%	3,161	-7.4%	2,928	-8.2%	2,688	6.6%	2,866		
	Rochester Total	3,491	-10.6%	3,122	-20.7%	2,477	-14.6%	2,116	-7.6%	1,956	-14.0%	1,682	-11.0%	1,497	-1.9%	1,469	-2.7%	1,430		
	WDNY Total	9,729	-9.9%	8,761	-19.1%	7,087	-12.6%	6,192	-9.8%	5,588	-13.3%	4,843	-8.6%	4,425	-6.1%	4,157	3.3%	4,296		

U.S. Bankruptcy Court - Western District of New York

Caseload by Judge, Division & District

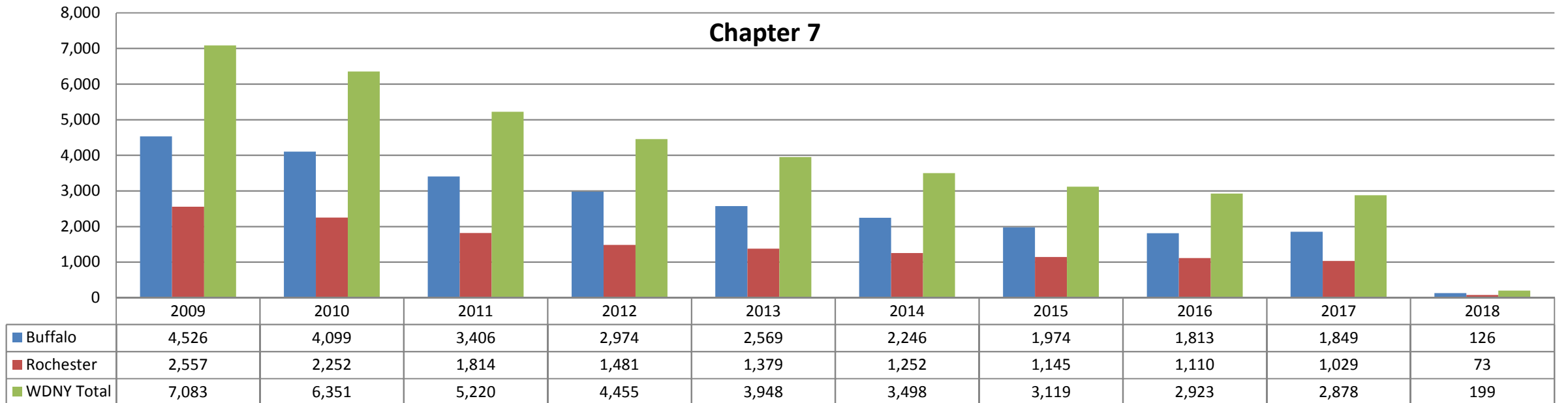
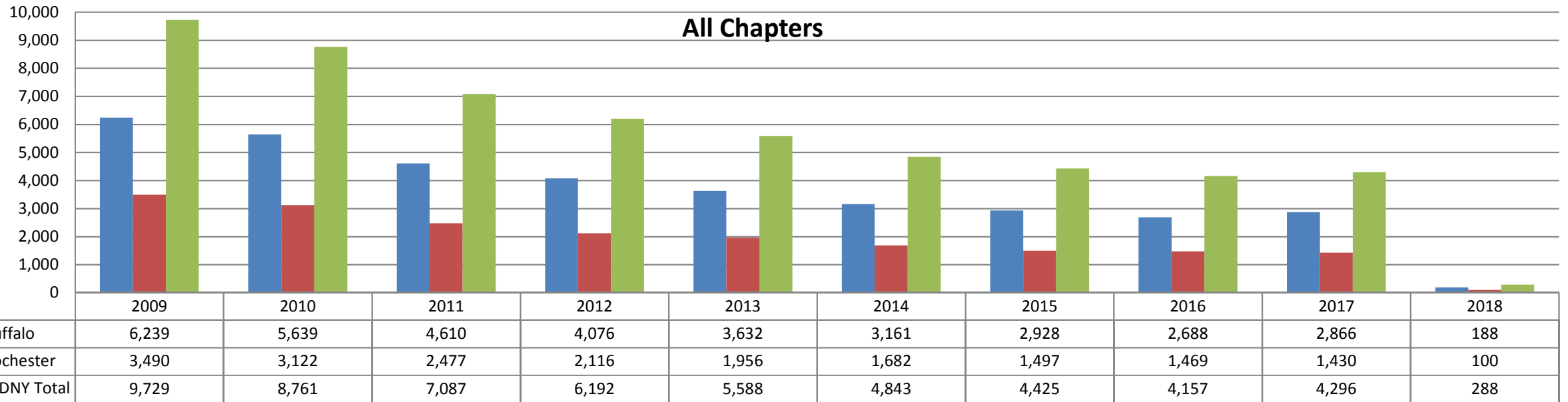
Month Ending January 31, 2018

Report #4

Page 1 of 1

		Chapter 7	Chapter 13	Chapter 11	Chapter 12/15	Cases Filed by Month	Cases Filed YTD	Adversary Cases				Case Closings		
								Pending Prior Month	New	Closed Current Month	Net Pending	Cases Closed 2017	Cases Closed 2018	% change
Jan.	Chief Judge Bucki	61	32	0	0	93	93	32	1	3	30	131	136	3.8%
	Judge Kaplan	65	30	0	0	95	95	96	5	36	65	131	131	0.0%
	Judge Warren	73	24	3	0	100	100	10	6	2	14	129	114	-11.6%
	Buffalo Total	126	62	0	0	188	188	128	6	39	95	262	267	1.9%
	Rochester Total	73	24	3	0	100	100	10	6	2	14	129	114	-11.6%
	WDNY Total	199	86	3	0	288	288	138	12	41	109	391	381	-2.6%

Year to Date	Chapter 7	Chapter 13	Chapter 11	Chapter 12 & 15	YTD Totals All Chapters	Adversary Cases YTD			Case Closings YTD		
						New	Closed	Net Pending	Cases Closed 2017	Cases Closed 2018	% change
Chief Judge Bucki YTD	61	32	0	0	93	1	3	30	131	136	3.8%
Judge Kaplan YTD	65	30	0	0	95	5	36	65	131	131	0.0%
Judge Warren YTD	73	24	3	0	100	6	2	14	129	114	-11.6%
Buffalo Total YTD	126	62	0	0	188	6	39	95	262	267	1.9%
Rochester Total YTD	73	24	3	0	100	6	2	14	129	114	-11.6%
WDNY Totals YTD	199	86	3	0	288	12	41	109	391	381	-2.6%

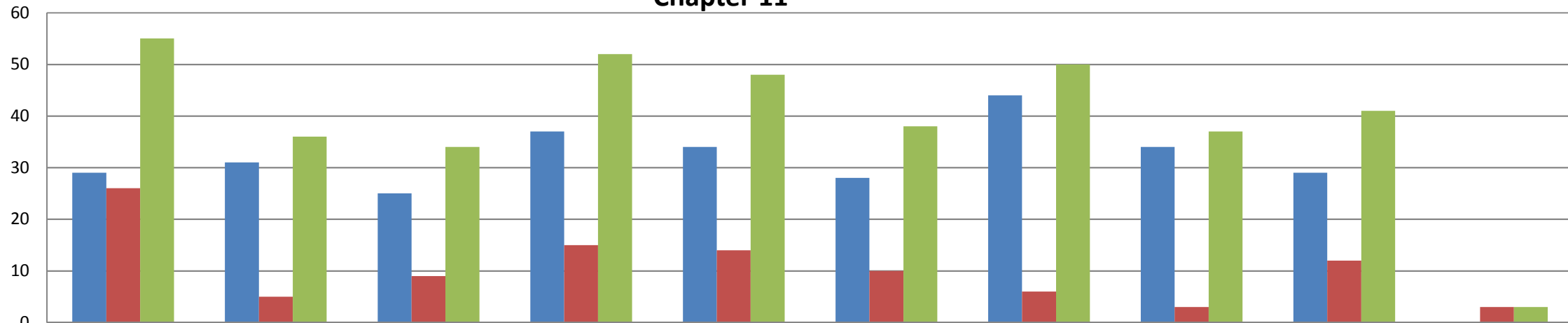


Chapter 13 (includes Chapter 12 & 15)



	2009	2010	2011	2012	2013	2014	2015	2016	2017	2018
Buffalo	1,684	1,509	1,179	1,065	1,029	887	909	841	988	62
Rochester	907	865	654	620	563	420	347	356	389	24
WDNY Totals	2,591	2,374	1,833	1,685	1,592	1,307	1,256	1,197	1,377	86

Chapter 11



	2009	2010	2011	2012	2013	2014	2015	2016	2017	2018
Buffalo	29	31	25	37	34	28	44	34	29	0
Rochester	26	5	9	15	14	10	6	3	12	3
WDNY Totals	55	36	34	52	48	38	50	37	41	3