

U.S. Bankruptcy Court - Western District of New York

Case Filing Report

Month Ending March 31, 2018

Report # 1

Page 1 of 1

		Cases Filed 2017	Cases Filed 2018	% change same month	% change YTD	Chapter 7				Chapter 13				Chapter 11	Ch 12 & 15
						<sup>1</sup> Non-Bus.	<sup>2</sup> Business	<sup>3</sup> Other	Total Ch. 7	<sup>1</sup> Non-Bus.	<sup>2</sup> Business	<sup>3</sup> Other	Total Ch.13		
Jan.	Buffalo	205	188	-8.3%	-8.3%	121	4	1	126	61	1	0	62	0	0
	Rochester	88	100	13.6%	13.6%	70	3	0	73	22	2	0	24	3	0
	WDNY Total Month	293	288	-1.7%	-1.7%	191	7	1	199	83	3	0	86	3	0
	WDNY Total YTD	293	288			191	7	1	199	83	3	0	86	3	0
Feb.	Buffalo	187	186	-0.5%	-4.6%	119	2	0	121	63	1	0	64	0	1
	Rochester	106	95	-10.4%	0.5%	63	0	0	63	27	3	0	30	2	0
	WDNY Total Month	293	281	-4.1%	-2.9%	182	2	0	184	90	4	0	94	2	1
	WDNY Total YTD	586	569			373	9	1	383	173	7	0	180	5	1
Mar.	Buffalo	278	258	-7.2%	-5.7%	191	3	1	195	61	2	0	63	0	0
	Rochester	145	145	0.0%	0.3%	102	6	1	109	36	0	0	36	0	0
	WDNY Total Month	423	403	-4.7%	-3.7%	293	9	2	304	97	2	0	99	0	0
	WDNY Total YTD	1,009	972			666	18	3	687	270	9	0	279	5	1
<b>Year to Date</b>		Cases Filed 2017	Cases Filed 2018	% change		Chapter 7 YTD				Chapter 13 YTD				Chapter 11 YTD	Chapter 12 & 15 YTD
						<sup>1</sup> Non-Bus.	<sup>2</sup> Business	<sup>3</sup> Other	Total Ch. 7	<sup>1</sup> Non-Bus.	<sup>2</sup> Business	<sup>3</sup> Other	Total Ch.13		
Buffalo YTD		670	632	-5.7%		431	9	2	442	185	4	0	189	0	1
Rochester YTD		339	340	0.3%		235	9	1	245	85	5	0	90	5	0
<b>WDNY YTD</b>		<b>1,009</b>	<b>972</b>	<b>-3.7%</b>		<b>666</b>	<b>18</b>	<b>3</b>	<b>687</b>	<b>270</b>	<b>9</b>	<b>0</b>	<b>279</b>	<b>5</b>	<b>1</b>

<sup>1</sup> Primary "Nature of Debt" is consumer debt.

<sup>2</sup> Primary "Nature of Debt" is business debt.

<sup>3</sup> Primary "Nature of Debt" is other.

U.S. Bankruptcy Court - Western District of New York

Case Filings by County

Month Ending March 31, 2018

Report # 2

Page 1 of 1

Counties in Division	Buffalo	Jan.	Feb.	March	April	May	June	July	Aug.	Sept.	Oct.	Nov.	Dec.	County Totals 2018 YTD	% chg from 2017 YTD
(Olean) Allegany		1	1	2										4	-73.3%
(Olean) Cattaraugus		8	7	9										24	0.0%
Chautauqua		13	18	26										57	5.6%
Erie		123	127	163										413	-6.1%
(Batavia) Genesee		7	5	10										22	83.3%
Niagara		26	23	37										86	-17.3%
(Batavia) Orleans		7	3	8										18	63.6%
(Batavia) Wyoming		3	2	3										8	-20.0%
Out of County		0	0	0										0	
<b>2018 Totals</b>		<b>188</b>	<b>186</b>	<b>258</b>	<b>0</b>	<b>0</b>	<b>0</b>	<b>0</b>	<b>0</b>	<b>0</b>	<b>0</b>	<b>0</b>	<b>0</b>	<b>632</b>	<b>-5.7%</b>
Counties in Division	Rochester	Jan.	Feb.	March	April	May	June	July	Aug.	Sept.	Oct.	Nov.	Dec.	County Totals 2018 YTD	% chg from 2017 YTD
(WG) Chemung		8	2	11										21	-25.0%
Livingston		2	3	2										7	-41.7%
Monroe		75	72	95										242	22.2%
Ontario		5	8	7										20	-35.5%
(WG) Schuyler		1	0	4										5	-16.7%
Seneca		4	3	5										12	71.4%
(WG) Steuben		2	3	10										15	-40.0%
Wayne		3	2	10										15	-42.3%
Yates		0	2	1										3	-50.0%
<b>2018 Totals</b>		<b>100</b>	<b>95</b>	<b>145</b>	<b>0</b>	<b>0</b>	<b>0</b>	<b>0</b>	<b>0</b>	<b>0</b>	<b>0</b>	<b>0</b>	<b>0</b>	<b>340</b>	<b>0.3%</b>
<b>WDNY Combined Totals</b>		<b>288</b>	<b>281</b>	<b>403</b>	<b>0</b>	<b>0</b>	<b>0</b>	<b>0</b>	<b>0</b>	<b>0</b>	<b>0</b>	<b>0</b>	<b>0</b>	<b>972</b>	<b>-3.7%</b>

U.S. Bankruptcy Court - Western District of New York

Historical Case Filing Report (All Chapters)

Month Ending March 31, 2018

		2009	% Change	2010	% Change	2011	% Change	2012	% Change	2013	% Change	2014	% Change	2015	% Change	2016	% Change	2017	% Change	2018
Jan.	Buffalo	382	-8.4%	350	-19.7%	281	-3.2%	272	-7.4%	252	-4.0%	242	-22.7%	188	-2.1%	184	11.4%	205	-8.3%	188
	Rochester	228	-16.7%	190	-19.5%	153	-0.7%	152	17.8%	179	-25.1%	134	-1.5%	131	-16.8%	109	-19.3%	88	13.6%	100
	WDNY Total Month	610	-11.5%	540	-19.6%	434	-2.3%	424	1.7%	431	-12.8%	376	-15.2%	319	-8.2%	293	0.0%	293	-1.7%	288
	WDNY Total YTD	610	-11.5%	540	-19.6%	434	-2.3%	424	1.7%	431	-12.8%	376	-15.2%	319	-8.2%	293	0.0%	293	-1.7%	288
Feb.	Buffalo	400	-8.0%	368	-0.8%	365	-3.8%	351	-22.2%	273	-15.4%	231	-20.3%	184	15.2%	212	-11.8%	187	-0.5%	186
	Rochester	233	-15.0%	198	-1.0%	196	-6.6%	183	-19.1%	148	-29.7%	104	-28.8%	74	32.4%	98	8.2%	106	-10.4%	95
	WDNY Total Month	633	-10.6%	566	-0.9%	561	-4.8%	534	-21.2%	421	-20.4%	335	-23.0%	258	20.2%	310	-5.5%	293	-4.1%	281
	WDNY Total YTD	1,243	-11.0%	1,106	-10.0%	995	-3.7%	958	-11.1%	852	-16.5%	711	-18.8%	577	4.5%	603	-2.8%	586	-2.9%	569
Mar.	Buffalo	562	10.1%	619	-22.5%	480	-12.7%	419	-5.5%	396	-20.7%	314	-4.5%	300	-15.0%	255	9.0%	278	-7.2%	258
	Rochester	358	-7.5%	331	-11.8%	292	-18.8%	237	-27.4%	172	0.0%	172	-23.8%	131	13.7%	149	-2.7%	145	0.0%	145
	WDNY Total Month	920	3.3%	950	-18.7%	772	-15.0%	656	-13.4%	568	-14.4%	486	-11.3%	431	-6.3%	404	4.7%	423	-4.7%	403
	WDNY Total YTD	2,163	-4.9%	2,056	-14.1%	1,767	-8.7%	1,614	-12.0%	1,420	-15.7%	1,197	-15.8%	1,008	-0.1%	1,007	0.2%	1,009	-3.7%	972
Apr.	Buffalo	646	-17.3%	534	-7.5%	494	-25.3%	369	-10.3%	331	-0.9%	328	-5.2%	311	-15.4%	263	-1.1%	260		
	Rochester	345	0.0%	345	-28.4%	247	-10.5%	221	-10.0%	199	-19.1%	161	8.7%	175	-12.6%	153	-18.3%	125		
	WDNY Total Month	991	-11.3%	879	-15.7%	741	-20.4%	590	-10.2%	530	-7.7%	489	-0.6%	486	-14.4%	416	-7.5%	385		
	WDNY Total YTD	3,154	-6.9%	2,935	-14.5%	2,508	-12.1%	2,204	-11.5%	1,950	-13.5%	1,686	-11.4%	1,494	-4.8%	1,423	-2.0%	1,394		
May	Buffalo	533	10.7%	590	-30.7%	409	3.2%	422	-20.1%	337	-15.4%	285	0.7%	287	-15.3%	243	15.6%	281		
	Rochester	318	-0.9%	315	-31.4%	216	-0.9%	214	-4.2%	205	-15.1%	174	-18.4%	142	3.5%	147	-1.4%	145		
	WDNY Total Month	851	6.3%	905	-30.9%	625	1.8%	636	-14.8%	542	-15.3%	459	-6.5%	429	-9.1%	390	9.2%	426		
	WDNY Total YTD	4,005	-4.1%	3,840	-18.4%	3,133	-9.4%	2,840	-12.3%	2,492	-13.9%	2,145	-10.3%	1,923	-5.7%	1,813	0.4%	1,820		
June	Buffalo	592	-7.6%	547	-21.9%	427	-14.8%	364	-11.3%	323	-15.5%	273	-12.5%	239	4.6%	250	-5.2%	237		
	Rochester	299	-5.0%	284	-13.4%	246	-36.6%	156	4.5%	163	-22.7%	126	5.6%	133	3.8%	138	0.7%	139		
	WDNY Total Month	891	-6.7%	831	-19.0%	673	-22.7%	520	-6.5%	486	-17.9%	399	-6.8%	372	4.3%	388	-3.1%	376		
	WDNY Total YTD	4,896	-4.6%	4,671	-18.5%	3,806	-11.7%	3,360	-11.4%	2,978	-14.6%	2,544	-9.8%	2,295	-4.1%	2,201	-0.2%	2,196		

U.S. Bankruptcy Court - Western District of New York

Historical Case Filing Report (All Chapters)

Month Ending March 31, 2018

		2009	% Change	2010	% Change	2011	% Change	2012	% Change	2013	% Change	2014	% Change	2015	% Change	2016	% Change	2017	% Change	2018
July	Buffalo	570	-15.1%	484	-33.5%	322	1.9%	328	-13.7%	283	-17.3%	234	9.4%	257	-30.7%	178	34.8%	240		
	Rochester	287	-13.6%	248	-23.8%	189	-5.8%	178	8.4%	193	-26.9%	141	-2.8%	137	-21.9%	107	5.6%	113		
	WDNY Total Month	857	-14.6%	732	-30.2%	511	-1.0%	506	-5.9%	476	-21.2%	375	4.8%	394	-27.7%	285	23.9%	353		
	WDNY Total YTD	5,753	-6.1%	5,403	-20.1%	4,317	-10.4%	3,866	-10.7%	3,454	-15.5%	2,919	-7.9%	2,689	-7.5%	2,486	2.5%	2,549		
Aug	Buffalo	550	-15.5%	465	-16.6%	388	-7.2%	360	-15.6%	304	-23.4%	233	-8.2%	214	9.8%	235	3.4%	243		
	Rochester	288	-1.4%	284	-25.0%	213	-16.0%	179	-20.7%	142	-1.4%	140	-10.7%	126	-12.7%	110	10.0%	121		
	WDNY Total Month	838	-10.6%	749	-19.8%	601	-10.3%	539	-17.3%	446	-16.4%	373	-9.1%	340	1.5%	345	5.5%	364		
	WDNY Total YTD	6,591	-6.6%	6,153	-20.1%	4,919	-10.4%	4,405	-11.5%	3,900	-15.6%	3,292	-8.0%	3,029	-6.5%	2,831	2.9%	2,913		
Sep	Buffalo	475	-5.7%	448	-6.3%	420	-39.0%	256	13.3%	290	-2.1%	284	0.0%	284	-18.3%	232	13.8%	264		
	Rochester	286	-9.4%	259	-29.7%	182	-26.4%	134	15.7%	155	-12.9%	135	-20.0%	108	6.5%	115	1.7%	117		
	WDNY Total Month	761	-7.1%	707	-14.9%	602	-35.2%	390	14.1%	445	-5.8%	419	-6.4%	392	-11.5%	347	9.8%	381		
	WDNY Total YTD	7,352	-6.7%	6,860	-19.5%	5,522	-13.2%	4,795	-9.4%	4,345	-14.6%	3,711	-7.9%	3,421	-7.1%	3,178	3.7%	3,294		
Oct	Buffalo	594	-21.2%	468	-22.6%	362	13.3%	410	-4.6%	391	-24.0%	297	-11.8%	262	18.7%	311	-13.5%	269		
	Rochester	323	-21.7%	253	-32.0%	172	-5.8%	162	-14.2%	139	-12.9%	121	9.9%	133	-13.5%	115	3.5%	119		
	WDNY Total Month	917	-21.4%	721	-25.9%	534	7.1%	572	-7.3%	530	-21.1%	418	-5.5%	395	7.8%	426	-8.9%	388		
	WDNY Total YTD	8,269	-8.3%	7,581	-20.1%	6,055	-11.4%	5,367	-9.2%	4,875	-15.3%	4,129	-7.6%	3,816	-5.6%	3,604	2.2%	3,682		
Nov	Buffalo	494	-13.0%	430	-22.3%	334	-20.7%	265	-10.9%	236	-2.5%	230	-7.4%	213	-15.0%	181	20.4%	218		
	Rochester	286	-25.2%	214	-7.9%	197	-18.8%	160	-16.3%	134	-5.2%	127	0.0%	127	-1.6%	125	-4.0%	120		
	WDNY Total Month	780	-17.4%	644	-17.5%	531	-20.0%	425	-12.9%	370	-3.5%	357	-4.8%	340	-10.0%	306	10.5%	338		
	WDNY Total YTD	9,049	-9.1%	8,225	-19.9%	6,585	-12.0%	5,792	-9.4%	5,245	-14.5%	4,486	-7.4%	4,156	-5.9%	3,910	2.8%	4,020		
Dec	Buffalo	440	-23.6%	336	-2.4%	328	-20.7%	260	-16.9%	216	-2.8%	210	-10.5%	189	-23.8%	144	27.8%	184		
	Rochester	240	-16.3%	201	-13.4%	174	-19.5%	140	-9.3%	127	15.7%	147	-45.6%	80	28.8%	103	-11.7%	91		
	WDNY Total Month	680	-21.0%	537	-6.5%	502	-20.3%	400	-14.3%	343	4.1%	357	-24.9%	269	-8.2%	247	11.3%	275		
	WDNY Total YTD	9,729	-9.9%	8,762	-19.1%	7,087	-12.6%	6,192	-9.8%	5,588	-13.3%	4,843	-8.7%	4,425	-6.1%	4,157	3.3%	4,295		
		<b>2009</b>	<b>% Change</b>	<b>2010</b>	<b>% Change</b>	<b>2011</b>	<b>% Change</b>	<b>2012</b>	<b>% Change</b>	<b>2013</b>	<b>% Change</b>	<b>2014</b>	<b>% Change</b>	<b>2015</b>	<b>% Change</b>	<b>2016</b>	<b>% Change</b>	<b>2017</b>	<b>% Change</b>	<b>2018</b>
	<b>Buffalo Total</b>	6,238	-9.6%	5,639	-18.2%	4,610	-11.6%	4,076	-10.9%	3,632	-13.0%	3,161	-7.4%	2,928	-8.2%	2,688	6.6%	2,866		
	<b>Rochester Total</b>	3,491	-10.6%	3,122	-20.7%	2,477	-14.6%	2,116	-7.6%	1,956	-14.0%	1,682	-11.0%	1,497	-1.9%	1,469	-2.7%	1,429		
	<b>WDNY Total</b>	9,729	-9.9%	8,761	-19.1%	7,087	-12.6%	6,192	-9.8%	5,588	-13.3%	4,843	-8.6%	4,425	-6.1%	4,157	3.3%	4,295		

U.S. Bankruptcy Court - Western District of New York

Caseload by Judge, Division & District

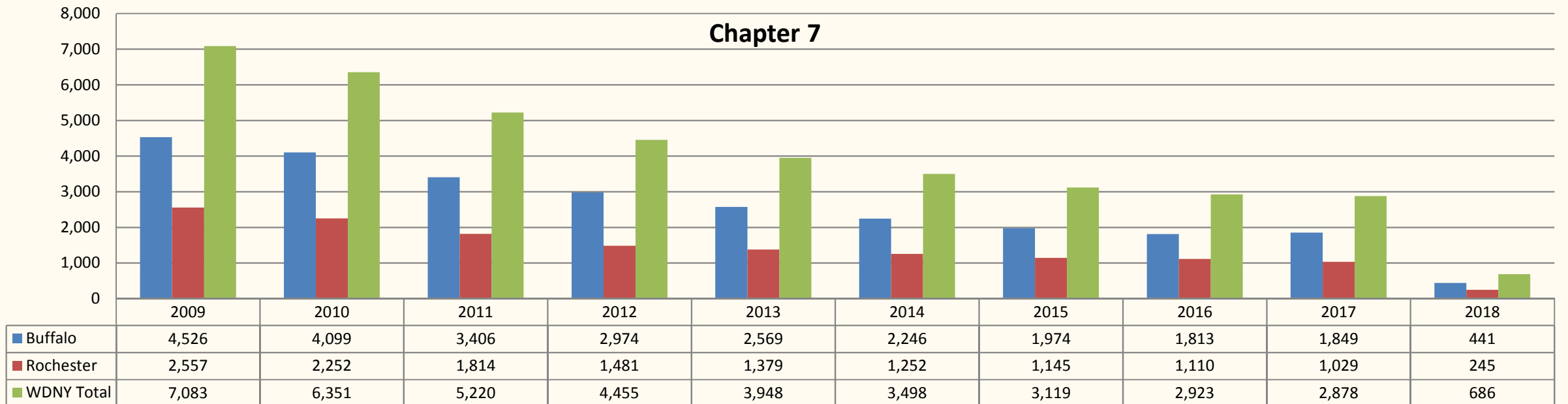
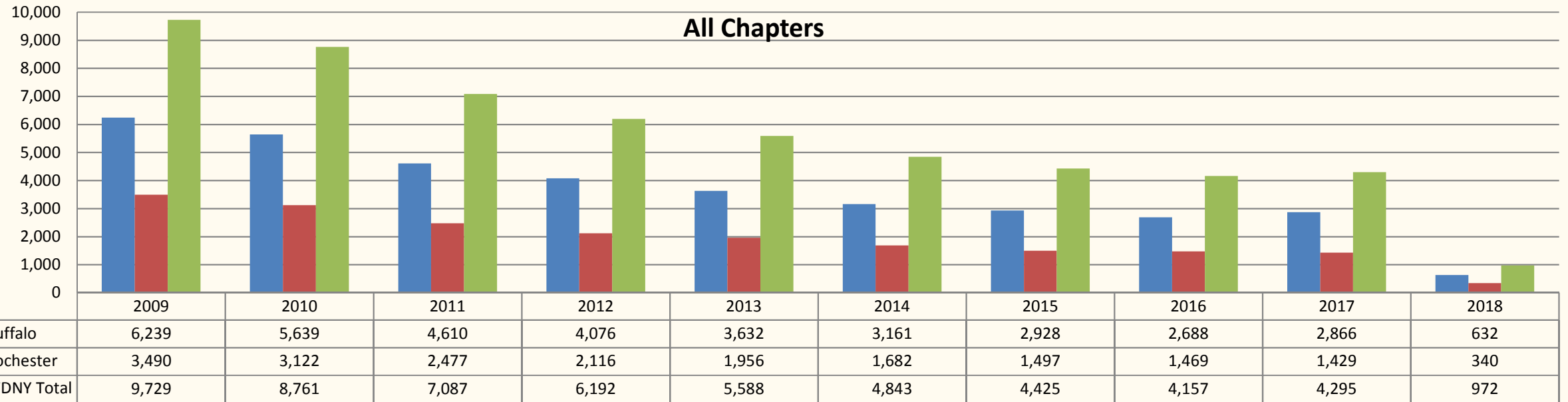
Month Ending March 31, 2018

Report #4

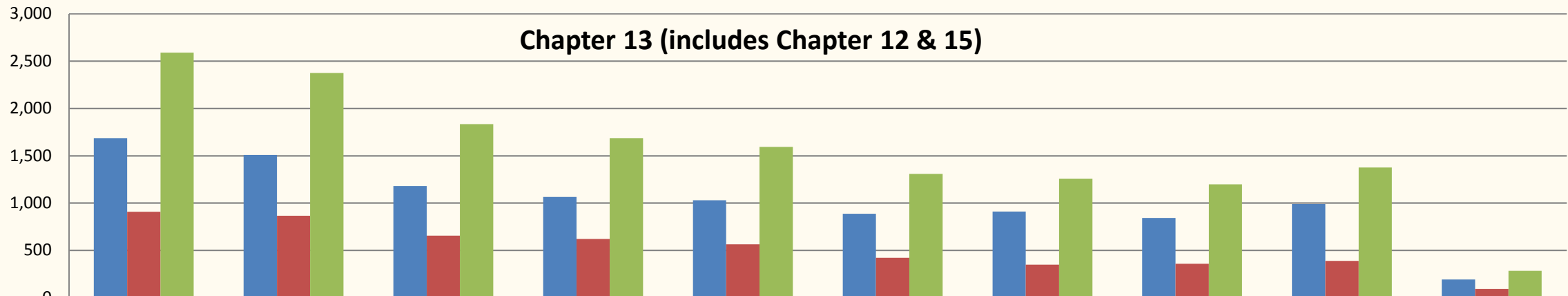
Page 1 of 1

		Chapter 7	Chapter 13	Chapter 11	Chapter 12/15	Cases Filed by Month	Cases Filed YTD	Adversary Cases				Case Closings		
								Pending Prior Month	New	Closed Current Month	Net Pending	Cases Closed 2017	Cases Closed 2018	% change
Jan.	Chief Judge Bucki	61	32	0	0	93	93	32	1	3	30	131	136	3.8%
	Judge Kaplan	65	30	0	0	95	95	96	5	36	65	131	131	0.0%
	Judge Warren	73	24	3	0	100	100	10	6	2	14	129	114	-11.6%
	Buffalo Total	126	62	0	0	188	188	128	6	39	95	262	267	1.9%
	Rochester Total	73	24	3	0	100	100	10	6	2	14	129	114	-11.6%
	<b>WDNY Total</b>	<b>199</b>	<b>86</b>	<b>3</b>	<b>0</b>	<b>288</b>	<b>288</b>	<b>138</b>	<b>12</b>	<b>41</b>	<b>109</b>	<b>391</b>	<b>381</b>	<b>-2.6%</b>
Feb.	Chief Judge Bucki	61	35	0	1	97	190	30	0	1	29	125	81	-35.2%
	Judge Kaplan	59	30	0	0	89	184	65	0	7	58	104	93	-10.6%
	Judge Warren	63	30	2	0	95	195	14	30	1	43	120	158	31.7%
	Buffalo Total	120	65	0	1	186	374	95	0	8	87	229	174	-24.0%
	Rochester Total	63	30	2	0	95	195	14	30	1	43	120	158	31.7%
	<b>WDNY Total</b>	<b>183</b>	<b>95</b>	<b>2</b>	<b>1</b>	<b>281</b>	<b>569</b>	<b>109</b>	<b>30</b>	<b>9</b>	<b>130</b>	<b>349</b>	<b>332</b>	<b>-4.9%</b>
Mar.	Chief Judge Bucki	99	25	0	0	124	314	29	1	7	23	99	155	56.6%
	Judge Kaplan	96	38	0	0	134	318	58	1	27	32	111	159	43.2%
	Judge Warren	109	36	0	0	145	340	43	2	1	44	120	201	67.5%
	Buffalo Total	195	63	0	0	258	632	87	2	34	55	210	314	49.5%
	Rochester Total	109	36	0	0	145	340	43	2	1	44	120	201	67.5%
	<b>WDNY Total</b>	<b>304</b>	<b>99</b>	<b>0</b>	<b>0</b>	<b>403</b>	<b>972</b>	<b>130</b>	<b>4</b>	<b>35</b>	<b>99</b>	<b>330</b>	<b>515</b>	<b>56.1%</b>

Year to Date	Chapter 7	Chapter 13	Chapter 11	Chapter 12 & 15	YTD Totals All Chapters	Adversary Cases YTD			Case Closings YTD		
						New	Closed	Net Pending	Cases Closed 2017	Cases Closed 2018	% change
Chief Judge Bucki YTD	221	92	0	1	314	2	11	23	355	372	4.8%
Judge Kaplan YTD	220	98	0	0	318	6	70	32	346	383	10.7%
Judge Warren YTD	245	90	5	0	340	38	4	44	369	473	28.2%
Buffalo Total YTD	441	190	0	1	632	8	81	55	701	755	7.7%
Rochester Total YTD	245	90	5	0	340	38	4	44	369	473	28.2%
<b>WDNY Totals YTD</b>	<b>686</b>	<b>280</b>	<b>5</b>	<b>1</b>	<b>972</b>	<b>46</b>	<b>85</b>	<b>99</b>	<b>1,070</b>	<b>1,228</b>	<b>14.8%</b>

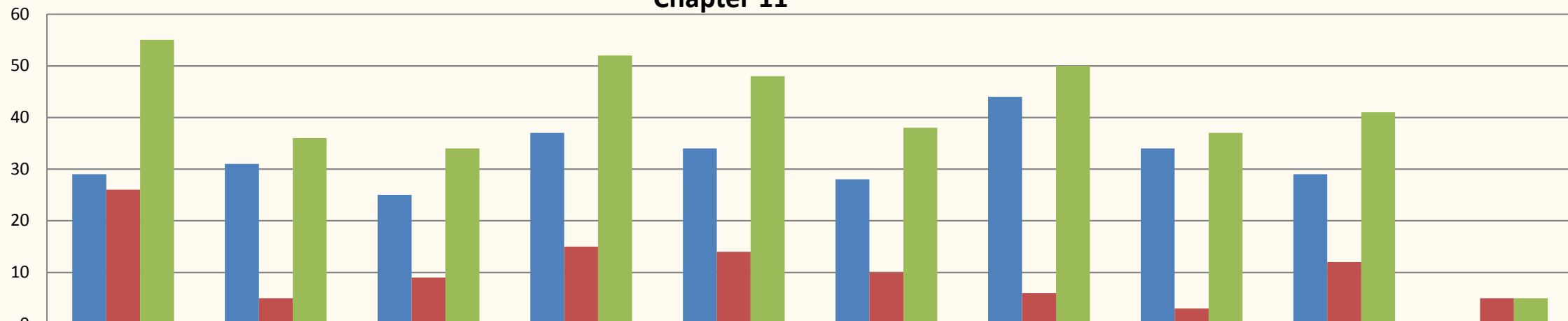


### Chapter 13 (includes Chapter 12 & 15)



	2009	2010	2011	2012	2013	2014	2015	2016	2017	2018
Buffalo	1,684	1,509	1,179	1,065	1,029	887	909	841	988	191
Rochester	907	865	654	620	563	420	347	356	388	90
WDNY Totals	2,591	2,374	1,833	1,685	1,592	1,307	1,256	1,197	1,376	281

### Chapter 11



	2009	2010	2011	2012	2013	2014	2015	2016	2017	2018
Buffalo	29	31	25	37	34	28	44	34	29	0
Rochester	26	5	9	15	14	10	6	3	12	5
WDNY Totals	55	36	34	52	48	38	50	37	41	5