

		Cases Filed 2017	Cases Filed 2018	% change same month	% change YTD	Chapter 7				Chapter 13				Chapter 11	Ch 12 & 15
						¹ Non-Bus.	² Business	³ Other	Total Ch. 7	¹ Non-Bus.	² Business	³ Other	Total Ch.13		
Jan.	Buffalo	205	188	-8.3%	-8.3%	121	4	1	126	61	1	0	62	0	0
	Rochester	88	100	13.6%	13.6%	70	3	0	73	22	2	0	24	3	0
	WDNY Total Month	293	288	-1.7%	-1.7%	191	7	1	199	83	3	0	86	3	0
	WDNY Total YTD	293	288			191	7	1	199	83	3	0	86	3	0
Feb.	Buffalo	187	186	-0.5%	-4.6%	119	2	0	121	63	1	0	64	0	1
	Rochester	106	95	-10.4%	0.5%	63	0	0	63	27	3	0	30	2	0
	WDNY Total Month	293	281	-4.1%	-2.9%	182	2	0	184	90	4	0	94	2	1
	WDNY Total YTD	586	569			373	9	1	383	173	7	0	180	5	1
Mar.	Buffalo	278	258	-7.2%	-5.7%	191	3	1	195	61	2	0	63	0	0
	Rochester	145	145	0.0%	0.3%	102	6	1	109	36	0	0	36	0	0
	WDNY Total Month	423	403	-4.7%	-3.7%	293	9	2	304	97	2	0	99	0	0
	WDNY Total YTD	1,009	972			666	18	3	687	270	9	0	279	5	1
Apr.	Buffalo	260	262	0.8%	-3.9%	175	2	0	177	74	0	0	74	10	1
	Rochester	125	143	14.4%	4.1%	107	4	0	111	31	1	0	32	0	0
	WDNY Total Month	385	405	5.2%	-1.2%	282	6	0	288	105	1	0	106	10	1
	WDNY Total YTD	1,394	1,377			948	24	3	975	375	10	0	385	15	2
May	Buffalo	281	236	-16.0%	-6.7%	173	3	3	179	55	0	0	55	2	0
	Rochester	145	115	-20.7%	-1.8%	75	5	0	80	34	0	0	34	0	1
	WDNY Total Month	426	351	-17.6%	-5.1%	248	8	3	259	89	0	0	89	2	1
	WDNY Total YTD	1,820	1,728			1,196	32	6	1,234	464	10	0	474	17	3

¹ Primary "Nature of Debt" is consumer debt.

² Primary "Nature of Debt" is business debt.

³ Primary "Nature of Debt" is other.

U.S. Bankruptcy Court - Western District of New York

Case Filing Report

Month Ending May 31, 2018

Report # 1

Page 2 of 2

Year to Date	Cases Filed 2017	Cases Filed 2018	% change	Chapter 7 YTD				Chapter 13 YTD				Chapter 11 YTD	Chapter 12 & 15 YTD
				¹ Non-Bus.	² Business	³ Other	Total Ch. 7	¹ Non-Bus.	² Business	³ Other	Total Ch.13		
Buffalo YTD	1,211	1,130	-6.7%	779	14	5	798	314	4	0	318	12	2
Rochester YTD	609	598	-1.8%	417	18	1	436	150	6	0	156	5	1
WDNY YTD	1,820	1,728	-5.1%	1,196	32	6	1,234	464	10	0	474	17	3

¹ Primary "Nature of Debt" is consumer debt.

² Primary "Nature of Debt" is business debt.

³ Primary "Nature of Debt" is other.

U.S. Bankruptcy Court - Western District of New York
Case Filings by County
Month Ending May 31, 2018

Report # 2
Page 1 of 1

Counties in Division	Buffalo	Jan.	Feb.	March	April	May	June	July	Aug.	Sept.	Oct.	Nov.	Dec.	County Totals 2018 YTD	% chg from 2017 YTD
(Olean) Allegany		1	1	2	4	2								10	-60.0%
(Olean) Cattaraugus		8	7	9	6	7								37	-15.9%
Chautauqua		13	18	26	28	25								110	0.9%
Erie		123	127	163	170	152								735	-5.6%
(Batavia) Genesee		7	5	10	5	3								30	42.9%
Niagara		26	23	37	33	38								157	-16.0%
(Batavia) Orleans		7	3	8	7	5								30	25.0%
(Batavia) Wyoming		3	2	3	9	4								21	-4.5%
Out of County		0	0	0	0	0								0	
2018 Totals		188	186	258	262	236	0	0	0	0	0	0	0	1,130	-6.7%
Counties in Division	Rochester	Jan.	Feb.	March	April	May	June	July	Aug.	Sept.	Oct.	Nov.	Dec.	County Totals 2018 YTD	% chg from 2017 YTD
(WG) Chemung		8	2	11	11	7								39	-18.8%
Livingston		2	3	2	4	9								20	-16.7%
Monroe		75	72	95	85	76								403	11.0%
Ontario		5	8	7	13	6								39	-32.8%
(WG) Schuyler		1	0	4	2	2								9	12.5%
Seneca		4	3	5	4	2								18	80.0%
(WG) Steuben		2	3	10	16	5								36	-16.3%
Wayne		3	2	10	5	6								26	-46.9%
Yates		0	2	1	3	2								8	33.3%
2018 Totals		100	95	145	143	115	0	0	0	0	0	0	0	598	-1.8%
WDNY Combined Totals		288	281	403	405	351	0	0	0	0	0	0	0	1,728	-5.1%

U.S. Bankruptcy Court - Western District of New York
Historical Case Filing Report (All Chapters)

Report # 3

Page 1 of 2

Month Ending May 31, 2018

		2009	% Change	2010	% Change	2011	% Change	2012	% Change	2013	% Change	2014	% Change	2015	% Change	2016	% Change	2017	% Change	2018
Jan.	Buffalo	382	-8.4%	350	-19.7%	281	-3.2%	272	-7.4%	252	-4.0%	242	-22.7%	188	-2.1%	184	11.4%	205	-8.3%	188
	Rochester	228	-16.7%	190	-19.5%	153	-0.7%	152	17.8%	179	-25.1%	134	-1.5%	131	-16.8%	109	-19.3%	88	13.6%	100
	WDNY Total Month	610	-11.5%	540	-19.6%	434	-2.3%	424	1.7%	431	-12.8%	376	-15.2%	319	-8.2%	293	0.0%	293	-1.7%	288
	WDNY Total YTD	610	-11.5%	540	-19.6%	434	-2.3%	424	1.7%	431	-12.8%	376	-15.2%	319	-8.2%	293	0.0%	293	-1.7%	288
Feb.	Buffalo	400	-8.0%	368	-0.8%	365	-3.8%	351	-22.2%	273	-15.4%	231	-20.3%	184	15.2%	212	-11.8%	187	-0.5%	186
	Rochester	233	-15.0%	198	-1.0%	196	-6.6%	183	-19.1%	148	-29.7%	104	-28.8%	74	32.4%	98	8.2%	106	-10.4%	95
	WDNY Total Month	633	-10.6%	566	-0.9%	561	-4.8%	534	-21.2%	421	-20.4%	335	-23.0%	258	20.2%	310	-5.5%	293	-4.1%	281
	WDNY Total YTD	1,243	-11.0%	1,106	-10.0%	995	-3.7%	958	-11.1%	852	-16.5%	711	-18.8%	577	4.5%	603	-2.8%	586	-2.9%	569
Mar.	Buffalo	562	10.1%	619	-22.5%	480	-12.7%	419	-5.5%	396	-20.7%	314	-4.5%	300	-15.0%	255	9.0%	278	-7.2%	258
	Rochester	358	-7.5%	331	-11.8%	292	-18.8%	237	-27.4%	172	0.0%	172	-23.8%	131	13.7%	149	-2.7%	145	0.0%	145
	WDNY Total Month	920	3.3%	950	-18.7%	772	-15.0%	656	-13.4%	568	-14.4%	486	-11.3%	431	-6.3%	404	4.7%	423	-4.7%	403
	WDNY Total YTD	2,163	-4.9%	2,056	-14.1%	1,767	-8.7%	1,614	-12.0%	1,420	-15.7%	1,197	-15.8%	1,008	-0.1%	1,007	0.2%	1,009	-3.7%	972
Apr.	Buffalo	646	-17.3%	534	-7.5%	494	-25.3%	369	-10.3%	331	-0.9%	328	-5.2%	311	-15.4%	263	-1.1%	260	0.8%	262
	Rochester	345	0.0%	345	-28.4%	247	-10.5%	221	-10.0%	199	-19.1%	161	8.7%	175	-12.6%	153	-18.3%	125	14.4%	143
	WDNY Total Month	991	-11.3%	879	-15.7%	741	-20.4%	590	-10.2%	530	-7.7%	489	-0.6%	486	-14.4%	416	-7.5%	385	5.2%	405
	WDNY Total YTD	3,154	-6.9%	2,935	-14.5%	2,508	-12.1%	2,204	-11.5%	1,950	-13.5%	1,686	-11.4%	1,494	-4.8%	1,423	-2.0%	1,394	-1.2%	1,377
May	Buffalo	533	10.7%	590	-30.7%	409	3.2%	422	-20.1%	337	-15.4%	285	0.7%	287	-15.3%	243	15.6%	281	-16.0%	236
	Rochester	318	-0.9%	315	-31.4%	216	-0.9%	214	-4.2%	205	-15.1%	174	-18.4%	142	3.5%	147	-1.4%	145	-20.7%	115
	WDNY Total Month	851	6.3%	905	-30.9%	625	1.8%	636	-14.8%	542	-15.3%	459	-6.5%	429	-9.1%	390	9.2%	426	-17.6%	351
	WDNY Total YTD	4,005	-4.1%	3,840	-18.4%	3,133	-9.4%	2,840	-12.3%	2,492	-13.9%	2,145	-10.3%	1,923	-5.7%	1,813	0.4%	1,820	-5.1%	1,728
June	Buffalo	592	-7.6%	547	-21.9%	427	-14.8%	364	-11.3%	323	-15.5%	273	-12.5%	239	4.6%	250	-5.2%	237		
	Rochester	299	-5.0%	284	-13.4%	246	-36.6%	156	4.5%	163	-22.7%	126	5.6%	133	3.8%	138	0.7%	139		
	WDNY Total Month	891	-6.7%	831	-19.0%	673	-22.7%	520	-6.5%	486	-17.9%	399	-6.8%	372	4.3%	388	-3.1%	376		
	WDNY Total YTD	4,896	-4.6%	4,671	-18.5%	3,806	-11.7%	3,360	-11.4%	2,978	-14.6%	2,544	-9.8%	2,295	-4.1%	2,201	-0.2%	2,196		

U.S. Bankruptcy Court - Western District of New York

Historical Case Filing Report (All Chapters)

Month Ending May 31, 2018

		2009	% Change	2010	% Change	2011	% Change	2012	% Change	2013	% Change	2014	% Change	2015	% Change	2016	% Change	2017	% Change	2018
July	Buffalo	570	-15.1%	484	-33.5%	322	1.9%	328	-13.7%	283	-17.3%	234	9.4%	257	-30.7%	178	34.8%	240		
	Rochester	287	-13.6%	248	-23.8%	189	-5.8%	178	8.4%	193	-26.9%	141	-2.8%	137	-21.9%	107	5.6%	113		
	WDNY Total Month	857	-14.6%	732	-30.2%	511	-1.0%	506	-5.9%	476	-21.2%	375	4.8%	394	-27.7%	285	23.9%	353		
	WDNY Total YTD	5,753	-6.1%	5,403	-20.1%	4,317	-10.4%	3,866	-10.7%	3,454	-15.5%	2,919	-7.9%	2,689	-7.5%	2,486	2.5%	2,549		
Aug	Buffalo	550	-15.5%	465	-16.6%	388	-7.2%	360	-15.6%	304	-23.4%	233	-8.2%	214	9.8%	235	3.4%	243		
	Rochester	288	-1.4%	284	-25.0%	213	-16.0%	179	-20.7%	142	-1.4%	140	-10.7%	126	-12.7%	110	10.0%	121		
	WDNY Total Month	838	-10.6%	749	-19.8%	601	-10.3%	539	-17.3%	446	-16.4%	373	-9.1%	340	1.5%	345	5.5%	364		
	WDNY Total YTD	6,591	-6.6%	6,153	-20.1%	4,919	-10.4%	4,405	-11.5%	3,900	-15.6%	3,292	-8.0%	3,029	-6.5%	2,831	2.9%	2,913		
Sep	Buffalo	475	-5.7%	448	-6.3%	420	-39.0%	256	13.3%	290	-2.1%	284	0.0%	284	-18.3%	232	13.8%	264		
	Rochester	286	-9.4%	259	-29.7%	182	-26.4%	134	15.7%	155	-12.9%	135	-20.0%	108	6.5%	115	1.7%	117		
	WDNY Total Month	761	-7.1%	707	-14.9%	602	-35.2%	390	14.1%	445	-5.8%	419	-6.4%	392	-11.5%	347	9.8%	381		
	WDNY Total YTD	7,352	-6.7%	6,860	-19.5%	5,522	-13.2%	4,795	-9.4%	4,345	-14.6%	3,711	-7.9%	3,421	-7.1%	3,178	3.7%	3,294		
Oct	Buffalo	594	-21.2%	468	-22.6%	362	13.3%	410	-4.6%	391	-24.0%	297	-11.8%	262	18.7%	311	-13.5%	269		
	Rochester	323	-21.7%	253	-32.0%	172	-5.8%	162	-14.2%	139	-12.9%	121	9.9%	133	-13.5%	115	3.5%	119		
	WDNY Total Month	917	-21.4%	721	-25.9%	534	7.1%	572	-7.3%	530	-21.1%	418	-5.5%	395	7.8%	426	-8.9%	388		
	WDNY Total YTD	8,269	-8.3%	7,581	-20.1%	6,055	-11.4%	5,367	-9.2%	4,875	-15.3%	4,129	-7.6%	3,816	-5.6%	3,604	2.2%	3,682		
Nov	Buffalo	494	-13.0%	430	-22.3%	334	-20.7%	265	-10.9%	236	-2.5%	230	-7.4%	213	-15.0%	181	20.4%	218		
	Rochester	286	-25.2%	214	-7.9%	197	-18.8%	160	-16.3%	134	-5.2%	127	0.0%	127	-1.6%	125	-4.0%	120		
	WDNY Total Month	780	-17.4%	644	-17.5%	531	-20.0%	425	-12.9%	370	-3.5%	357	-4.8%	340	-10.0%	306	10.5%	338		
	WDNY Total YTD	9,049	-9.1%	8,225	-19.9%	6,585	-12.0%	5,792	-9.4%	5,245	-14.5%	4,486	-7.4%	4,156	-5.9%	3,910	2.8%	4,020		
Dec	Buffalo	440	-23.6%	336	-2.4%	328	-20.7%	260	-16.9%	216	-2.8%	210	-10.5%	189	-23.8%	144	27.8%	184		
	Rochester	240	-16.3%	201	-13.4%	174	-19.5%	140	-9.3%	127	15.7%	147	-45.6%	80	28.8%	103	-11.7%	91		
	WDNY Total Month	680	-21.0%	537	-6.5%	502	-20.3%	400	-14.3%	343	4.1%	357	-24.9%	269	-8.2%	247	11.3%	275		
	WDNY Total YTD	9,729	-9.9%	8,762	-19.1%	7,087	-12.6%	6,192	-9.8%	5,588	-13.3%	4,843	-8.7%	4,425	-6.1%	4,157	3.3%	4,295		
		2009	% Change	2010	% Change	2011	% Change	2012	% Change	2013	% Change	2014	% Change	2015	% Change	2016	% Change	2017	% Change	2018
	Buffalo Total	6,238	-9.6%	5,639	-18.2%	4,610	-11.6%	4,076	-10.9%	3,632	-13.0%	3,161	-7.4%	2,928	-8.2%	2,688	6.6%	2,866		
	Rochester Total	3,491	-10.6%	3,122	-20.7%	2,477	-14.6%	2,116	-7.6%	1,956	-14.0%	1,682	-11.0%	1,497	-1.9%	1,469	-2.7%	1,429		
	WDNY Total	9,729	-9.9%	8,761	-19.1%	7,087	-12.6%	6,192	-9.8%	5,588	-13.3%	4,843	-8.6%	4,425	-6.1%	4,157	3.3%	4,295		

U.S. Bankruptcy Court - Western District of New York

Caseload by Judge, Division & District

Month Ending May 31, 2018

Report #4

Page 1 of 2

		Chapter 7	Chapter 13	Chapter 11	Chapter 12/15	Cases Filed by Month	Cases Filed YTD	Adversary Cases				Case Closings		
								Pending Prior Month	New	Closed Current Month	Net Pending	Cases Closed 2017	Cases Closed 2018	% change
Jan.	Chief Judge Bucki	61	32	0	0	93	93	32	1	3	30	131	136	3.8%
	Judge Kaplan	65	30	0	0	95	95	96	5	36	65	131	131	0.0%
	Judge Warren	73	24	3	0	100	100	10	6	2	14	129	114	-11.6%
	Buffalo Total	126	62	0	0	188	188	128	6	39	95	262	267	1.9%
	Rochester Total	73	24	3	0	100	100	10	6	2	14	129	114	-11.6%
	WDNY Total	199	86	3	0	288	288	138	12	41	109	391	381	-2.6%
Feb.	Chief Judge Bucki	61	35	0	1	97	190	30	0	1	29	125	81	-35.2%
	Judge Kaplan	59	30	0	0	89	184	65	0	7	58	104	93	-10.6%
	Judge Warren	63	30	2	0	95	195	14	30	1	43	120	158	31.7%
	Buffalo Total	120	65	0	1	186	374	95	0	8	87	229	174	-24.0%
	Rochester Total	63	30	2	0	95	195	14	30	1	43	120	158	31.7%
	WDNY Total	183	95	2	1	281	569	109	30	9	130	349	332	-4.9%
Mar.	Chief Judge Bucki	99	25	0	0	124	314	29	1	7	23	99	155	56.6%
	Judge Kaplan	96	38	0	0	134	318	58	1	27	32	111	159	43.2%
	Judge Warren	109	36	0	0	145	340	43	2	1	44	120	201	67.5%
	Buffalo Total	195	63	0	0	258	632	87	2	34	55	210	314	49.5%
	Rochester Total	109	36	0	0	145	340	43	2	1	44	120	201	67.5%
	WDNY Total	304	99	0	0	403	972	130	4	35	99	330	515	56.1%
Apr.	Chief Judge Bucki	85	44	2	0	131	445	23	1	3	21	106	121	14.2%
	Judge Kaplan	92	30	8	1	131	449	32	1	6	27	109	92	-15.6%
	Judge Warren	110	33	0	0	143	483	44	0	2	42	90	81	-10.0%
	Buffalo Total	177	74	10	1	262	894	55	2	9	48	215	213	-0.9%
	Rochester Total	110	33	0	0	143	483	44	0	2	42	90	81	-10.0%
	WDNY Total	287	107	10	1	405	1,377	99	2	11	90	305	294	-3.6%
May	Chief Judge Bucki	100	29	0	0	129	574	21	1	3	19	127	128	0.8%
	Judge Kaplan	79	26	2	0	107	556	27	1	2	26	125	95	-24.0%
	Judge Warren	80	34	0	1	115	598	42	2	7	37	75	164	118.7%
	Buffalo Total	179	55	2	0	236	1,130	48	2	5	45	252	223	-11.5%
	Rochester Total	80	34	0	1	115	598	42	2	7	37	75	164	118.7%
	WDNY Total	259	89	2	1	351	1,728	90	4	12	82	327	387	18.3%

U.S. Bankruptcy Court - Western District of New York

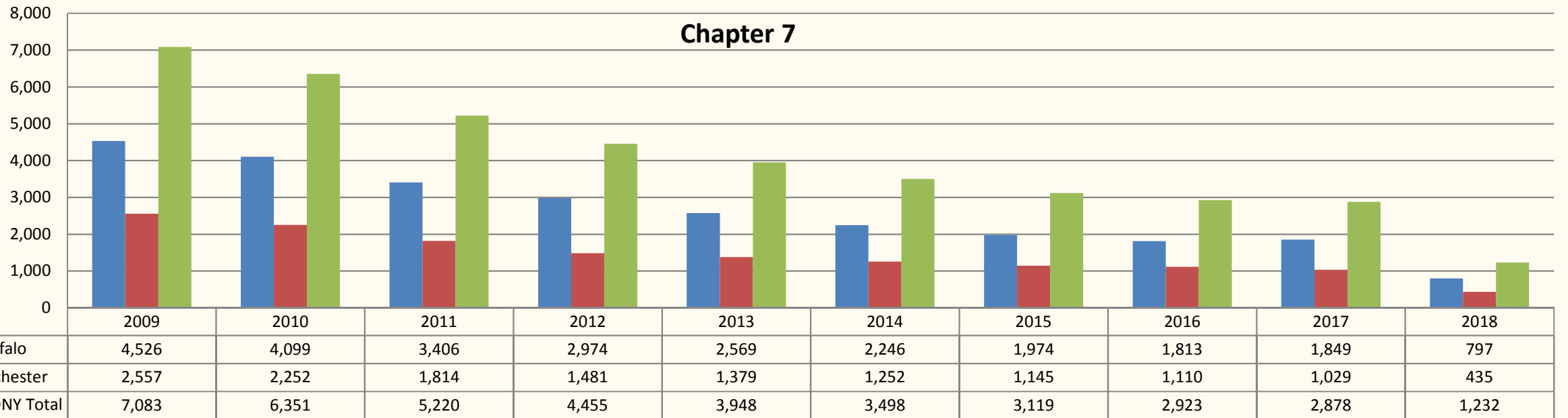
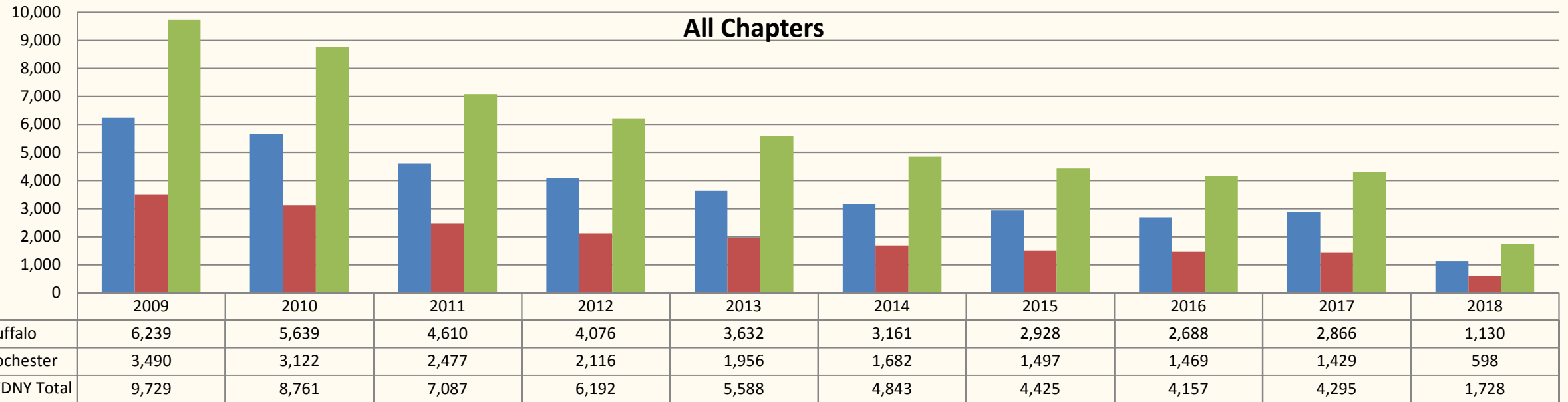
Caseload by Judge, Division & District

Month Ending May 31, 2018

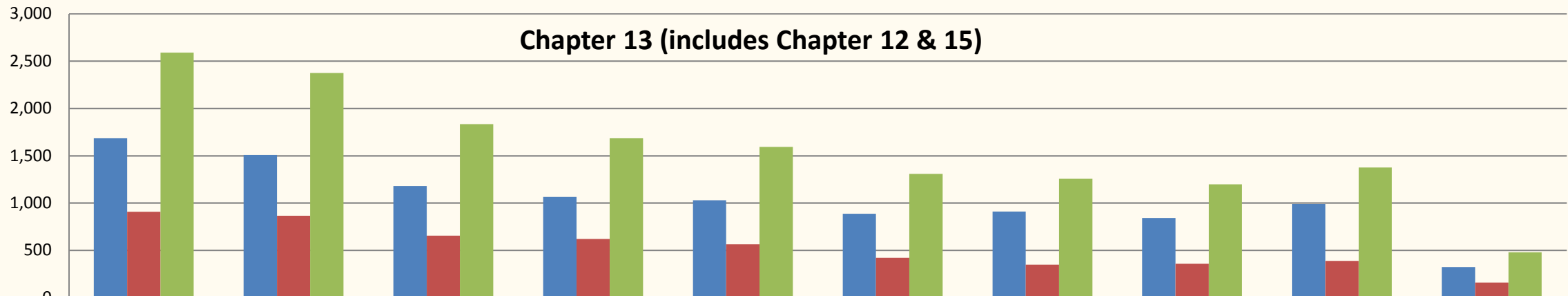
Report # 4

Page 2 of 2

Year to Date	Chapter 7	Chapter 13	Chapter 11	Chapter 12 & 15	YTD Totals All Chapters	Adversary Cases YTD			Case Closings YTD		
						New	Closed	Net Pending	Cases Closed 2017	Cases Closed 2018	% change
Chief Judge Bucki YTD	406	165	2	1	574	4	17	19	588	621	5.6%
Judge Kaplan YTD	391	154	10	1	556	8	78	26	580	570	-1.7%
Judge Warren YTD	435	157	5	1	598	40	13	37	534	718	34.5%
Buffalo Total YTD	797	319	12	2	1,130	12	95	45	1,168	1,191	2.0%
Rochester Total YTD	435	157	5	1	598	40	13	37	534	718	34.5%
WDNY Totals YTD	1,232	476	17	3	1,728	52	108	82	1,702	1,909	12.2%

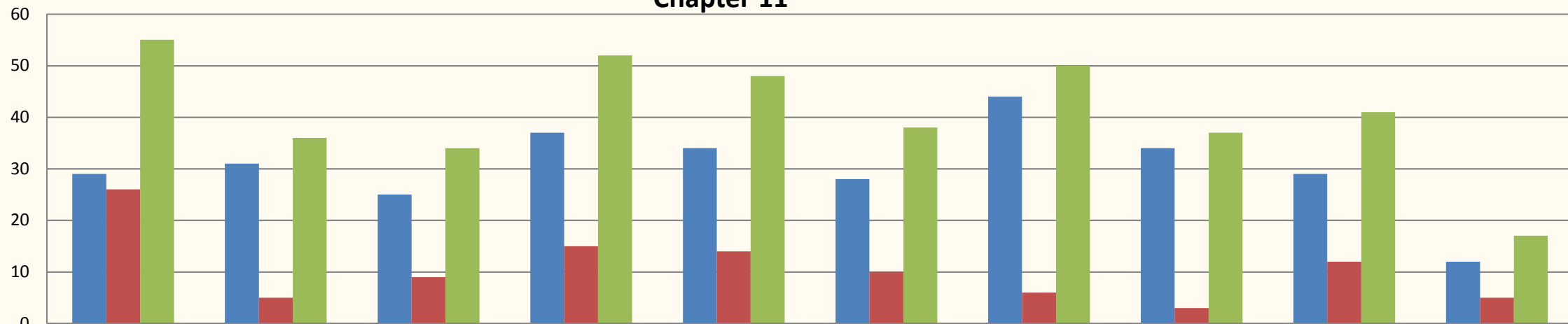


Chapter 13 (includes Chapter 12 & 15)



	2009	2010	2011	2012	2013	2014	2015	2016	2017	2018
Buffalo	1,684	1,509	1,179	1,065	1,029	887	909	841	988	321
Rochester	907	865	654	620	563	420	347	356	388	158
WDNY Totals	2,591	2,374	1,833	1,685	1,592	1,307	1,256	1,197	1,376	479

Chapter 11



	2009	2010	2011	2012	2013	2014	2015	2016	2017	2018
Buffalo	29	31	25	37	34	28	44	34	29	12
Rochester	26	5	9	15	14	10	6	3	12	5
WDNY Totals	55	36	34	52	48	38	50	37	41	17