

U.S. Bankruptcy Court - Western District of New York
Case Filing Report
Month Ending September 30, 2017

Report # 1
Page 1 of 2

		Cases Filed 2016	Cases Filed 2017	% change same month	% change YTD	Chapter 7				Chapter 13				Chapter 11	Ch 12 & 15
						¹ Non-Bus.	² Business	³ Other	Total Ch. 7	¹ Non-Bus.	² Business	³ Other	Total Ch.13		
Jan.	Buffalo	184	205	11.4%	11.4%	130	8	1	139	64	1	0	65	0	1
	Rochester	109	88	-19.3%	-19.3%	52	5	0	57	30	0	0	30	1	0
	WDNY Total Month	293	293	0.0%	0.0%	182	13	1	196	94	1	0	95	1	1
	WDNY Total YTD	293	293			182	13	1	196	94	1	0	95	1	1
Feb.	Buffalo	212	187	-11.8%	-1.0%	120	3	1	124	60	0	0	60	2	1
	Rochester	98	106	8.2%	-6.3%	72	4	2	78	25	1	1	27	1	0
	WDNY Total Month	310	293	-5.5%	-2.8%	192	7	3	202	85	1	1	87	3	1
	WDNY Total YTD	603	586			374	20	4	398	179	2	1	182	4	2
Mar.	Buffalo	255	278	9.0%	2.9%	184	7	0	191	84	1	0	85	2	0
	Rochester	149	145	-2.7%	-4.8%	102	9	0	111	33	0	0	33	1	0
	WDNY Total Month	404	423	4.7%	0.2%	286	16	0	302	117	1	0	118	3	0
	WDNY Total YTD	1,007	1,009			660	36	4	700	296	3	1	300	7	2
Apr.	Buffalo	263	260	-1.1%	1.8%	178	4	0	182	74	2	0	76	2	0
	Rochester	153	125	-18.3%	-8.8%	89	6	1	96	28	1	0	29	0	0
	WDNY Total Month	416	385	-7.5%	-2.0%	267	10	1	278	102	3	0	105	2	0
	WDNY Total YTD	1,423	1,394			927	46	5	978	398	6	1	405	9	2
May	Buffalo	243	281	15.6%	4.7%	186	4	0	190	87	1	0	88	3	0
	Rochester	147	145	-1.4%	-7.2%	109	2	1	112	31	1	0	32	1	0
	WDNY Total Month	390	426	9.2%	0.4%	295	6	1	302	118	2	0	120	4	0
	WDNY Total YTD	1,813	1,820			1,222	52	6	1,280	516	8	1	525	13	2
June	Buffalo	250	237	-5.2%	2.9%	157	4	1	162	73	0	0	73	2	0
	Rochester	138	139	0.7%	-5.8%	95	7	0	102	36	0	0	36	1	0
	WDNY Total Month	388	376	-3.1%	-0.2%	252	11	1	264	109	0	0	109	3	0
	WDNY Total YTD	2,201	2,196			1,474	63	7	1,544	625	8	1	634	16	2
July	Buffalo	178	240	34.8%	6.5%	147	3	0	150	85	2	0	87	2	1
	Rochester	107	113	5.6%	-4.4%	76	3	0	79	32	0	0	32	2	0
	WDNY Total Month	285	353	23.9%	2.5%	223	6	0	229	117	2	0	119	4	1
	WDNY Total YTD	2,486	2,549			1,697	69	7	1,773	742	10	1	753	20	3

¹ Primary "Nature of Debt" is consumer debt. ² Primary "Nature of Debt" is business debt. ³ Primary "Nature of Debt" is other.

U.S. Bankruptcy Court - Western District of New York
Case Filing Report
Month Ending September 30, 2017

Report # 1
Page 2 of 2

		Cases Filed 2016	Cases Filed 2017	% change same month	% change YTD	Chapter 7				Chapter 13				Chapter 11	Ch. 12 & 15
						¹ Non-Bus.	² Business	³ Other	Total Ch. 7	¹ Non-Bus.	² Business	³ Other	Total Ch.13		
Aug.	Buffalo	235	243	3.4%	6.1%	152	7	1	160	78	0	0	78	5	0
	Rochester	110	121	10.0%	-2.9%	86	4	2	92	29	0	0	29	0	0
	WDNY Total Month	345	364	5.5%	2.9%	238	11	3	252	107	0	0	107	5	0
	WDNY Total YTD	2,831	2,913			1,935	80	10	2,025	849	10	1	860	25	3
Sep.	Buffalo	232	264	13.8%	7.0%	128	3	0	131	129	2	0	131	2	0
	Rochester	115	118	2.6%	-2.3%	81	3	0	84	31	2	0	33	1	0
	WDNY Total Month	347	382	10.1%	3.7%	209	6	0	215	160	4	0	164	3	0
	WDNY Total YTD	3,178	3,295			2,144	86	10	2,240	1,009	14	1	1,024	28	3
Year to Date		Cases Filed 2016	Cases Filed 2017	% change		Chapter 7 YTD				Chapter 13 YTD				Chapter 11 YTD	Chapter 12 & 15 YTD
						¹ Non-Bus.	² Business	³ Other	Total Ch. 7	¹ Non-Bus.	² Business	³ Other	Total Ch.13		
	Buffalo YTD	2,052	2,195	7.0%		1,382	43	4	1,429	734	9	0	743	20	3
	Rochester YTD	1,126	1,100	-2.3%		762	43	6	811	275	5	1	281	8	0
	WDNY YTD	3,178	3,295	3.7%		2,144	86	10	2,240	1,009	14	1	1,024	28	3

¹ Primary "Nature of Debt" is consumer debt. ² Primary "Nature of Debt" is business debt. ³ Primary "Nature of Debt" is other.

U.S. Bankruptcy Court - Western District of New York

Case Filings by County

Month Ending September 30, 2017

Report # 2

Page 1 of 1

Counties in Buffalo Division	Jan.	Feb.	March	April	May	June	July	Aug.	Sept.	Oct.	Nov.	Dec.	County Totals 2017 YTD	% chg from 2016 YTD
(Olean) Allegany	4	9	2	4	6	1	3	4	2				35	-20.5%
(Olean) Cattaraugus	9	10	5	9	11	10	8	9	7				78	-15.2%
Chautauqua	12	18	24	31	24	15	22	13	15				174	1.2%
Erie	133	112	195	163	176	166	164	159	200				1,468	15.0%
(Batavia) Genesee	7	2	3	3	6	8	5	7	6				47	-27.7%
Niagara	35	31	38	40	43	28	34	43	27				319	0.9%
(Batavia) Orleans	4	1	6	3	10	3	1	6	4				38	-25.5%
(Batavia) Wyoming	1	4	5	7	5	6	3	2	2				35	0.0%
Out of County	0	0	0	0	0	0	0	0	1				1	
2017 Totals	205	187	278	260	281	237	240	243	264	0	0	0	2,195	7.0%

Counties in Rochester Division	Jan.	Feb.	March	April	May	June	July	Aug.	Sept.	Oct.	Nov.	Dec.	County Totals 2017 YTD	% chg from 2016 YTD
(WG) Chemung	4	12	12	8	12	11	9	7	13				88	11.4%
Livingston	1	6	5	3	9	5	3	4	5				41	2.5%
Monroe	55	57	86	80	85	84	76	80	75				678	-4.9%
Ontario	7	9	15	12	15	9	9	10	6				92	4.5%
(WG) Schuyler	3	0	3	1	1	4	0	3	0				15	87.5%
Seneca	1	3	3	2	1	0	0	1	6				17	-39.3%
(WG) Steuben	5	9	11	8	10	16	7	8	4				78	-11.4%
Wayne	12	6	8	11	12	9	9	8	6				81	9.5%
Yates	0	4	2	0	0	1	0	0	3				10	25.0%
2017 Totals	88	106	145	125	145	139	113	121	118	0	0	0	1,100	-2.3%

WDNY Combined Totals	293	293	423	385	426	376	353	364	382	0	0	0	3,295	3.7%
-----------------------------	------------	------------	------------	------------	------------	------------	------------	------------	------------	----------	----------	----------	--------------	-------------

U.S. Bankruptcy Court - Western District of New York
 Historical Case Filing Report (All Chapters)

Month Ending September 30, 2017

		2008	% Change	2009	% Change	2010	% Change	2011	% Change	2012	% Change	2013	% Change	2014	% Change	2015	% Change	2016	% Change	2017
Jan.	Buffalo	419	-8.8%	382	-8.4%	350	-19.7%	281	-3.2%	272	-7.4%	252	-4.0%	242	-22.7%	188	-2.1%	184	11.4%	205
	Rochester	230	-0.9%	228	-16.7%	190	-19.5%	153	-0.7%	152	17.8%	179	-25.1%	134	-1.5%	131	-16.8%	109	-19.3%	88
	WDNY Total Month	649	-6.0%	610	-11.5%	540	-19.6%	434	-2.3%	424	1.7%	431	-12.8%	376	-15.2%	319	-8.2%	293	0.0%	293
	WDNY Total YTD	649	-6.0%	610	-11.5%	540	-19.6%	434	-2.3%	424	1.7%	431	-12.8%	376	-15.2%	319	-8.2%	293	0.0%	293
Feb.	Buffalo	425	-5.9%	400	-8.0%	368	-0.8%	365	-3.8%	351	-22.2%	273	-15.4%	231	-20.3%	184	15.2%	212	-11.8%	187
	Rochester	262	-11.1%	233	-15.0%	198	-1.0%	196	-6.6%	183	-19.1%	148	-29.7%	104	-28.8%	74	32.4%	98	8.2%	106
	WDNY Total Month	687	-7.9%	633	-10.6%	566	-0.9%	561	-4.8%	534	-21.2%	421	-20.4%	335	-23.0%	258	20.2%	310	-5.5%	293
	WDNY Total YTD	1,336	-7.0%	1,243	-11.0%	1,106	-10.0%	995	-3.7%	958	-11.1%	852	-16.5%	711	-18.8%	577	4.5%	603	-2.8%	586
Mar.	Buffalo	518	8.5%	562	10.1%	619	-22.5%	480	-12.7%	419	-5.5%	396	-20.7%	314	-4.5%	300	-15.0%	255	9.0%	278
	Rochester	286	25.2%	358	-7.5%	331	-11.8%	292	-18.8%	237	-27.4%	172	0.0%	172	-23.8%	131	13.7%	149	-2.7%	145
	WDNY Total Month	804	14.4%	920	3.3%	950	-18.7%	772	-15.0%	656	-13.4%	568	-14.4%	486	-11.3%	431	-6.3%	404	4.7%	423
	WDNY Total YTD	2,140	1.1%	2,163	-4.9%	2,056	-14.1%	1,767	-8.7%	1,614	-12.0%	1,420	-15.7%	1,197	-15.8%	1,008	-0.1%	1,007	0.2%	1,009
Apr.	Buffalo	569	13.5%	646	-17.3%	534	-7.5%	494	-25.3%	369	-10.3%	331	-0.9%	328	-5.2%	311	-15.4%	263	-1.1%	260
	Rochester	315	9.5%	345	0.0%	345	-28.4%	247	-10.5%	221	-10.0%	199	-19.1%	161	8.7%	175	-12.6%	153	-18.3%	125
	WDNY Total Month	884	12.1%	991	-11.3%	879	-15.7%	741	-20.4%	590	-10.2%	530	-7.7%	489	-0.6%	486	-14.4%	416	-7.5%	385
	WDNY Total YTD	3,024	4.3%	3,154	-6.9%	2,935	-14.5%	2,508	-12.1%	2,204	-11.5%	1,950	-13.5%	1,686	-11.4%	1,494	-4.8%	1,423	-2.0%	1,394
May	Buffalo	523	1.9%	533	10.7%	590	-30.7%	409	3.2%	422	-20.1%	337	-15.4%	285	0.7%	287	-15.3%	243	15.6%	281
	Rochester	286	11.2%	318	-0.9%	315	-31.4%	216	-0.9%	214	-4.2%	205	-15.1%	174	-18.4%	142	3.5%	147	-1.4%	145
	WDNY Total Month	809	5.2%	851	6.3%	905	-30.9%	625	1.8%	636	-14.8%	542	-15.3%	459	-6.5%	429	-9.1%	390	9.2%	426
	WDNY Total YTD	3,833	4.5%	4,005	-4.1%	3,840	-18.4%	3,133	-9.4%	2,840	-12.3%	2,492	-13.9%	2,145	-10.3%	1,923	-5.7%	1,813	0.4%	1,820
June	Buffalo	487	21.6%	592	-7.6%	547	-21.9%	427	-14.8%	364	-11.3%	323	-15.5%	273	-12.5%	239	4.6%	250	-5.2%	237
	Rochester	302	-1.0%	299	-5.0%	284	-13.4%	246	-36.6%	156	4.5%	163	-22.7%	126	5.6%	133	3.8%	138	0.7%	139
	WDNY Total Month	789	12.9%	891	-6.7%	831	-19.0%	673	-22.7%	520	-6.5%	486	-17.9%	399	-6.8%	372	4.3%	388	-3.1%	376
	WDNY Total YTD	4,622	5.9%	4,896	-4.6%	4,671	-18.5%	3,806	-11.7%	3,360	-11.4%	2,978	-14.6%	2,544	-9.8%	2,295	-4.1%	2,201	-0.2%	2,196

U.S. Bankruptcy Court - Western District of New York

Historical Case Filing Report (All Chapters)

Month Ending September 30, 2017

		2008	% Change	2009	% Change	2010	% Change	2011	% Change	2012	% Change	2013	% Change	2014	% Change	2015	% Change	2016	% Change	2017
July	Buffalo	521	9.4%	570	-15.1%	484	-33.5%	322	1.9%	328	-13.7%	283	-17.3%	234	9.4%	257	-30.7%	178	34.8%	240
	Rochester	324	-11.4%	287	-13.6%	248	-23.8%	189	-5.8%	178	8.4%	193	-26.9%	141	-2.8%	137	-21.9%	107	5.6%	113
	WDNY Total Month	845	1.4%	857	-14.6%	732	-30.2%	511	-1.0%	506	-5.9%	476	-21.2%	375	4.8%	394	-27.7%	285	23.9%	353
	WDNY Total YTD	5,467	5.2%	5,753	-6.1%	5,403	-20.1%	4,317	-10.4%	3,866	-10.7%	3,454	-15.5%	2,919	-7.9%	2,689	-7.5%	2,486	2.5%	2,549
Aug	Buffalo	474	16.0%	550	-15.5%	465	-16.6%	388	-7.2%	360	-15.6%	304	-23.4%	233	-8.2%	214	9.8%	235	3.4%	243
	Rochester	329	-12.5%	288	-1.4%	284	-25.0%	213	-16.0%	179	-20.7%	142	-1.4%	140	-10.7%	126	-12.7%	110	10.0%	121
	WDNY Total Month	803	4.4%	838	-10.6%	749	-19.8%	601	-10.3%	539	-17.3%	446	-16.4%	373	-9.1%	340	1.5%	345	5.5%	364
	WDNY Total YTD	6,270	5.1%	6,591	-6.6%	6,153	-20.1%	4,919	-10.4%	4,405	-11.5%	3,900	-15.6%	3,292	-8.0%	3,029	-6.5%	2,831	2.9%	2,913
Sep	Buffalo	511	-7.0%	475	-5.7%	448	-6.3%	420	-39.0%	256	13.3%	290	-2.1%	284	0.0%	284	-18.3%	232	13.8%	264
	Rochester	294	-2.7%	286	-9.4%	259	-29.7%	182	-26.4%	134	15.7%	155	-12.9%	135	-20.0%	108	6.5%	115	2.6%	118
	WDNY Total Month	805	-5.5%	761	-7.1%	707	-14.9%	602	-35.2%	390	14.1%	445	-5.8%	419	-6.4%	392	-11.5%	347	10.1%	382
	WDNY Total YTD	7,075	3.9%	7,352	-6.7%	6,860	-19.5%	5,522	-13.2%	4,795	-9.4%	4,345	-14.6%	3,711	-7.9%	3,421	-7.1%	3,178	3.7%	3,295
Oct	Buffalo	533	11.4%	594	-21.2%	468	-22.6%	362	13.3%	410	-4.6%	391	-24.0%	297	-11.8%	262	18.7%	311		
	Rochester	323	0.0%	323	-21.7%	253	-32.0%	172	-5.8%	162	-14.2%	139	-12.9%	121	9.9%	133	-13.5%	115		
	WDNY Total Month	856	7.1%	917	-21.4%	721	-25.9%	534	7.1%	572	-7.3%	530	-21.1%	418	-5.5%	395	7.8%	426		
	WDNY Total YTD	7,931	4.3%	8,269	-8.3%	7,581	-20.1%	6,055	-11.4%	5,367	-9.2%	4,875	-15.3%	4,129	-7.6%	3,816	-5.6%	3,604		
Nov	Buffalo	383	29.0%	494	-13.0%	430	-22.3%	334	-20.7%	265	-10.9%	236	-2.5%	230	-7.4%	213	-15.0%	181		
	Rochester	243	17.7%	286	-25.2%	214	-7.9%	197	-18.8%	160	-16.3%	134	-5.2%	127	0.0%	127	-1.6%	125		
	WDNY Total Month	626	24.6%	780	-17.4%	644	-17.5%	531	-20.0%	425	-12.9%	370	-3.5%	357	-4.8%	340	-10.0%	306		
	WDNY Total YTD	8,557	5.7%	9,049	-9.1%	8,225	-19.9%	6,585	-12.0%	5,792	-9.4%	5,245	-14.5%	4,486	-7.4%	4,156	-5.9%	3,910		
Dec	Buffalo	385	14.3%	440	-23.6%	336	-2.4%	328	-20.7%	260	-16.9%	216	-2.8%	210	-10.5%	189	-23.8%	144		
	Rochester	237	1.3%	240	-16.3%	201	-13.4%	174	-19.5%	140	-9.3%	127	15.7%	147	-45.6%	80	28.8%	103		
	WDNY Total Month	622	9.3%	680	-21.0%	537	-6.5%	502	-20.3%	400	-14.3%	343	4.1%	357	-24.9%	269	-8.2%	247		
	WDNY Total YTD	9,179	6.0%	9,729	-9.9%	8,762	-19.1%	7,087	-12.6%	6,192	-9.8%	5,588	-13.3%	4,843	-8.7%	4,425	-6.1%	4,157		
		2008	% Change	2009	% Change	2010	% Change	2011	% Change	2012	% Change	2013	% Change	2014	% Change	2015	% Change	2016	% Change	2017
Buffalo Total		5,748	8.5%	6,238	-9.6%	5,639	-18.2%	4,610	-11.6%	4,076	-10.9%	3,632	-13.0%	3,161	-7.4%	2,928	-8.2%	2,688		
Rochester Total		3,431	1.7%	3,491	-10.6%	3,122	-20.7%	2,477	-14.6%	2,116	-7.6%	1,956	-14.0%	1,682	-11.0%	1,497	-1.9%	1,469		
WDNY Total		9,179	6.0%	9,729	-9.9%	8,761	-19.1%	7,087	-12.6%	6,192	-9.8%	5,588	-13.3%	4,843	-8.6%	4,425	-6.1%	4,157		

		Chapter 7	Chapter 13	Chapter 11	Chapter 12/15	Cases Filed by Month	Cases Filed YTD	Adversary Cases				Case Closings		
								Pending Prior Month	New	Closed Current Month	Net Pending	Cases Closed 2016	Cases Closed 2017	% change
Jan.	Chief Judge Bucki	59	40	0	1	100	100	35	3	10	28	163	131	-19.6%
	Judge Kaplan	80	25	0	0	105	105	114	0	10	104	116	131	12.9%
	Judge Warren	57	30	1	0	88	88	11	1	1	11	97	129	33.0%
	Buffalo Total	139	65	0	1	205	205	149	3	20	132	279	262	-6.1%
	Rochester Total	57	30	1	0	88	88	11	1	1	11	97	129	33.0%
	WDNY Total	196	95	1	1	293	293	160	4	21	143	376	391	4.0%
Feb.	Chief Judge Bucki	80	21	1	1	103	203	28	2	1	29	116	125	7.8%
	Judge Kaplan	44	39	1	0	84	189	104	1	2	103	149	104	-30.2%
	Judge Warren	78	27	1	0	106	194	11	1	0	12	200	120	-40.0%
	Buffalo Total	124	60	2	1	187	392	132	3	3	132	265	229	-13.6%
	Rochester Total	78	27	1	0	106	194	11	1	0	12	200	120	-40.0%
	WDNY Total	202	87	3	1	293	586	143	4	3	144	465	349	-24.9%
Mar.	Chief Judge Bucki	89	42	0	0	131	334	29	3	3	29	152	99	-34.9%
	Judge Kaplan	102	43	2	0	147	336	103	1	18	86	135	111	-17.8%
	Judge Warren	111	33	1	0	145	339	12	1	0	13	154	120	-22.1%
	Buffalo Total	191	85	2	0	278	670	132	4	21	115	287	210	-26.8%
	Rochester Total	111	33	1	0	145	339	12	1	0	13	154	120	-22.1%
	WDNY Total	302	118	3	0	423	1,009	144	5	21	128	441	330	-25.2%
Apr.	Chief Judge Bucki	95	46	1	0	142	476	29	7	2	34	131	106	-19.1%
	Judge Kaplan	87	30	1	0	118	454	86	1	1	86	137	109	-20.4%
	Judge Warren	96	29	0	0	125	464	13	4	0	17	141	90	-36.2%
	Buffalo Total	182	76	2	0	260	930	115	8	3	120	268	215	-19.8%
	Rochester Total	96	29	0	0	125	464	13	4	0	17	141	90	-36.2%
	WDNY Total	278	105	2	0	385	1,394	128	12	3	137	409	305	-25.4%
May	Chief Judge Bucki	97	30	2	0	129	605	34	3	1	36	117	127	8.5%
	Judge Kaplan	93	58	1	0	152	606	86	0	6	80	141	125	-11.3%
	Judge Warren	112	32	1	0	145	609	17	3	1	19	172	75	-56.4%
	Buffalo Total	190	88	3	0	281	1,211	120	3	7	116	258	252	-2.3%
	Rochester Total	112	32	1	0	145	609	17	3	1	19	172	75	-56.4%
	WDNY Total	302	120	4	0	426	1,820	137	6	8	135	430	327	-24.0%

U.S. Bankruptcy Court - Western District of New York
 Caseload by Judge, Division & District
 Month Ending September 30, 2017

Report # 4
 Page 2 of 3

		Chapter 7	Chapter 13	Chapter 11	Chapter 12/15	Cases Filed by Month	Cases Filed YTD	Adversary Cases				Case Closings		
								Pending Prior Month	New	Closed Current Month	Net Pending	Cases Closed 2016	Cases Closed 2017	% change
June	Chief Judge Bucki	64	38	1	0	103	708	36	2	3	35	120	125	4.2%
	Judge Kaplan	98	35	1	0	134	740	80	3	3	80	131	113	-13.7%
	Judge Warren	102	36	1	0	139	748	19	2	1	20	162	247	52.5%
	Buffalo Total	162	73	2	0	237	1,448	116	5	6	115	251	238	-5.2%
	Rochester Total	102	36	1	0	139	748	19	2	1	20	162	247	52.5%
	WDNY Total	264	109	3	0	376	2,196	135	7	7	135	413	485	17.4%
July	Chief Judge Bucki	85	58	2	1	146	854	35	0	1	34	166	108	-34.9%
	Judge Kaplan	64	30	0	0	94	834	80	0	0	80	158	126	-20.3%
	Judge Warren	79	32	2	0	113	861	20	1	1	20	160	88	-45.0%
	Buffalo Total	149	88	2	1	240	1,688	115	0	1	114	324	234	-27.8%
	Rochester Total	79	32	2	0	113	861	20	1	1	20	160	88	-45.0%
	WDNY Total	228	120	4	1	353	2,549	135	1	2	134	484	322	-33.5%
Aug.	Chief Judge Bucki	75	34	4	0	113	967	34	4	2	36	141	183	29.8%
	Judge Kaplan	85	44	1	0	130	964	80	17	3	94	157	142	-9.6%
	Judge Warren	92	29	0	0	121	982	20	1	0	21	103	144	39.8%
	Buffalo Total	160	78	5	0	243	1,931	114	21	5	130	298	325	9.1%
	Rochester Total	92	29	0	0	121	982	20	1	0	21	103	144	39.8%
	WDNY Total	252	107	5	0	364	2,913	134	22	5	151	401	469	17.0%
Sep.	Chief Judge Bucki	66	74	1	0	141	1,108	36	1	3	34	172	181	5.2%
	Judge Kaplan	65	57	1	0	123	1,087	94	3	1	96	147	167	13.6%
	Judge Warren	84	33	1	0	118	1,100	21	1	3	19	231	177	-23.4%
	Buffalo Total	131	131	2	0	264	2,195	130	4	4	130	319	348	9.1%
	Rochester Total	84	33	1	0	118	1,100	21	1	3	19	231	177	-23.4%
	WDNY Total	215	164	3	0	382	3,295	151	5	7	149	550	525	-4.5%

U.S. Bankruptcy Court - Western District of New York

Caseload by Judge, Division & District

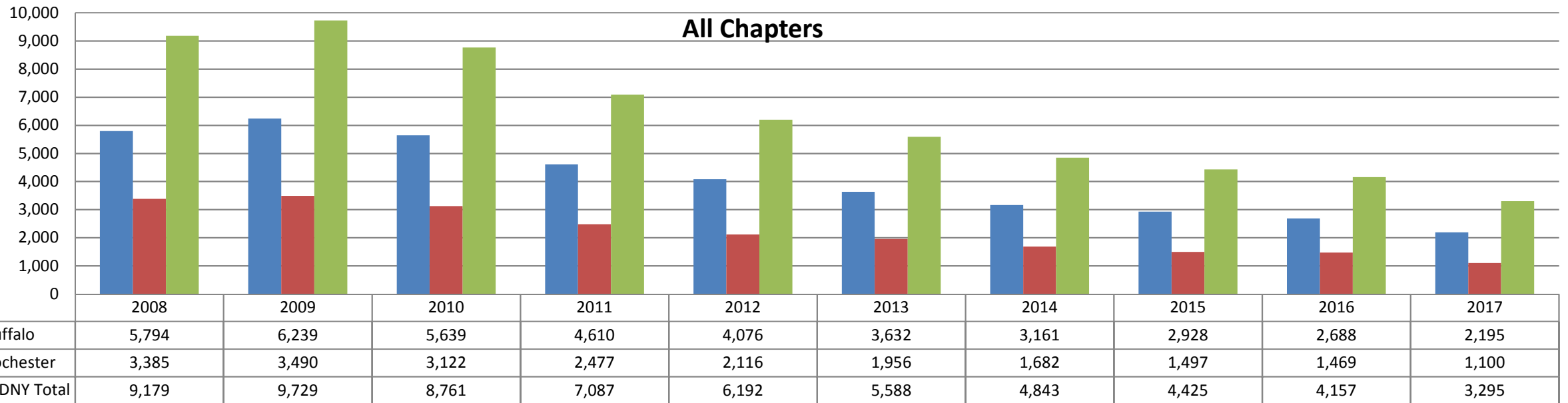
Month Ending September 30, 2017

Report # 4

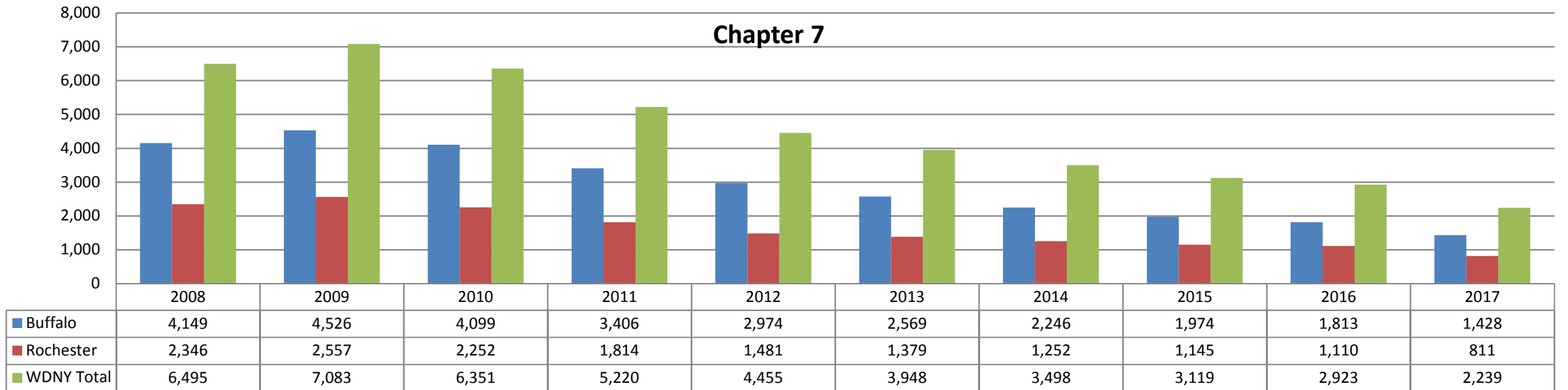
Page 3 of 3

Year to Date	Chapter 7	Chapter 13	Chapter 11	Chapter 12 & 15	YTD Totals All Chapters	Adversary Cases YTD			Case Closings YTD		
						New	Closed	Net Pending	Cases Closed 2016	Cases Closed 2017	% change
Chief Judge Bucki YTD	710	383	12	3	1,108	25	26	34	1,278	1,185	-7.3%
Judge Kaplan YTD	718	361	8	0	1,087	26	44	96	1,271	1,128	-11.3%
Judge Warren YTD	811	281	8	0	1,100	15	7	19	1,420	1,190	-16.2%
Buffalo Total YTD	1,428	744	20	3	2,195	51	70	130	2,549	2,313	-9.3%
Rochester Total YTD	811	281	8	0	1,100	15	7	19	1,420	1,190	-16.2%
WDNY Totals YTD	2,239	1,025	28	3	3,295	66	77	149	3,969	3,503	-11.7%

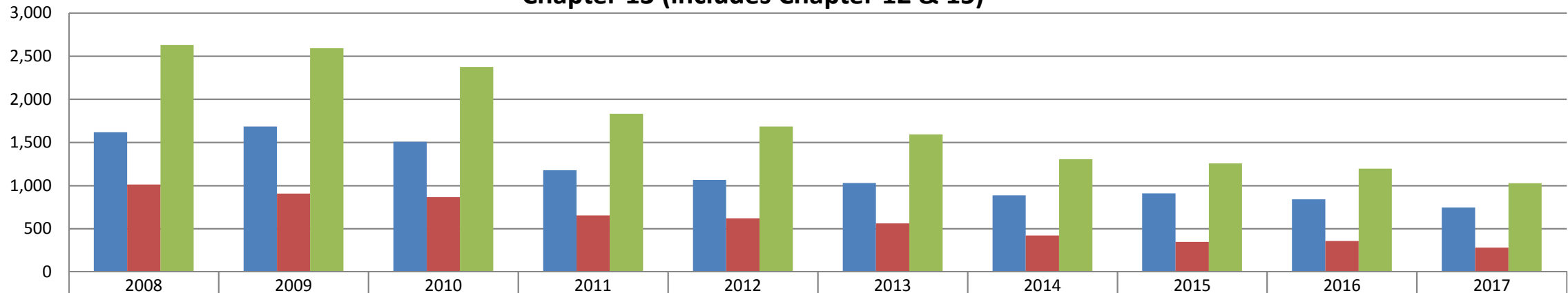
All Chapters



Chapter 7

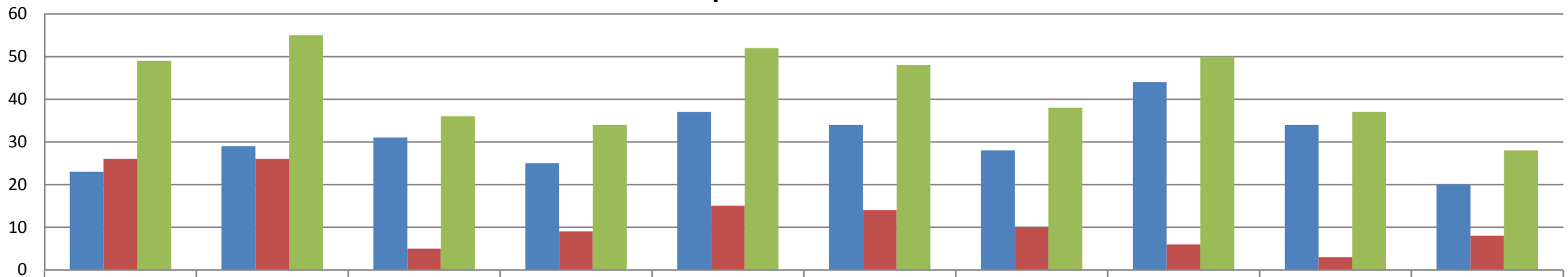


Chapter 13 (includes Chapter 12 & 15)



Buffalo	1,617	1,684	1,509	1,179	1,065	1,029	887	909	841	747
Rochester	1,013	907	865	654	620	563	420	347	356	281
WDNY Totals	2,630	2,591	2,374	1,833	1,685	1,592	1,307	1,256	1,197	1,028

Chapter 11



Buffalo	23	29	31	25	37	34	28	44	34	20
Rochester	26	26	5	9	15	14	10	6	3	8
WDNY Totals	49	55	36	34	52	48	38	50	37	28