

		Cases Filed 2020	Cases Filed 2021	% change same month	% change YTD	Chapter 7				Chapter 13				Chapter 11	Ch 12 & 15
						¹ Non-Bus.	² Business	³ Other	Total Ch. 7	¹ Non-Bus.	² Business	³ Other	Total Ch.13		
Jan.	Buffalo	187	92	-50.8%	-50.8%	70	4	0	74	18	0	0	18	0	0
	Rochester	98	51	-48.0%	-48.0%	36	5	0	41	9	0	0	9	1	0
	WDNY Total Month	285	143	-49.8%	-49.8%	106	9	0	115	27	0	0	27	1	0
	WDNY Total YTD	285	143			106	9	0	115	27	0	0	27	1	0
Feb.	Buffalo	155	102	-34.2%	-43.3%	84	1	1	86	15	0	0	15	1	0
	Rochester	88	76	-13.6%	-31.7%	54	2	0	56	19	1	0	20	0	0
	WDNY Total Month	243	178	-26.7%	-39.2%	138	3	1	142	34	1	0	35	1	0
	WDNY Total YTD	528	321			244	12	1	257	61	1	0	62	2	0
Mar.	Buffalo	215	151	-29.8%	-38.1%	126	1	0	127	24	0	0	24	0	0
	Rochester	116	72	-37.9%	-34.1%	52	1	0	53	18	0	0	18	1	0
	WDNY Total Month	331	223	-32.6%	-36.7%	178	2	0	180	42	0	0	42	1	0
	WDNY Total YTD	859	544			422	14	1	437	103	1	0	104	3	0
Apr.	Buffalo	96	135	40.6%	-26.5%	105	4	1	110	24	0	0	24	1	0
	Rochester	55	78	41.8%	-22.4%	67	1	0	68	9	1	0	10	0	0
	WDNY Total Month	151	213	41.1%	-25.0%	172	5	1	178	33	1	0	34	1	0
	WDNY Total YTD	1,010	757			594	19	2	615	136	2	0	138	4	0
Year to Date		Cases Filed 2020	Cases Filed 2021	% change		Chapter 7 YTD				Chapter 13 YTD				Chapter 11 YTD	Chapter 12 & 15 YTD
						¹ Non-Bus.	² Business	³ Other	Total Ch. 7	¹ Non-Bus.	² Business	³ Other	Total Ch.13		
Buffalo YTD		653	480	-26.5%		385	10	2	397	81	0	0	81	2	0
Rochester YTD		357	277	-22.4%		209	9	0	218	55	2	0	57	2	0
WDNY YTD		1,010	757	-25.0%		594	19	2	615	136	2	0	138	4	0

¹ Primary "Nature of Debt" is consumer debt.

² Primary "Nature of Debt" is business debt.

³ Primary "Nature of Debt" is other.

U.S. Bankruptcy Court - Western District of New York

Case Filings by County

Month Ending April 30, 2021

Report # 2

Page 1 of 1

Counties in Buffalo Division	Jan.	Feb.	March	April	May	June	July	Aug.	Sept.	Oct.	Nov.	Dec.	County Totals 2021 YTD	% chg from 2020 YTD
(Olean) Allegany	0	2	1	2									5	-54.5%
(Olean) Cattaraugus	5	6	3	8									22	-21.4%
Chautauqua	8	9	14	10									41	-19.6%
Erie	58	58	98	82									296	-25.8%
(Batavia) Genesee	4	6	4	5									19	-32.1%
Niagara	13	15	26	25									79	-33.1%
(Batavia) Orleans	3	3	3	2									11	0.0%
(Batavia) Wyoming	1	3	2	1									7	0.0%
Out of County	0	0	0	0									0	
2021 Totals	92	102	151	135	0	0	0	0	0	0	0	0	480	-26.5%

Counties in Rochester Division	Jan.	Feb.	March	April	May	June	July	Aug.	Sept.	Oct.	Nov.	Dec.	County Totals 2021 YTD	% chg from 2020 YTD
(WG) Chemung	2	4	3	7									16	-30.4%
Livingston	3	1	1	4									9	-18.2%
Monroe	37	48	46	42									173	-23.8%
Ontario	3	9	6	11									29	-12.1%
(WG) Schuyler	1	1	0	4									6	0.0%
Seneca	0	3	3	1									7	40.0%
(WG) Steuben	2	2	9	1									14	-30.0%
Wayne	3	6	3	4									16	-48.4%
Yates	0	2	1	4									7	n/a
Out of County	0	0	0	0									0	
2021 Totals	51	76	72	78	0	0	0	0	0	0	0	0	277	-22.4%

WDNY Combined Totals	143	178	223	213	0	0	0	0	0	0	0	0	757	-25.0%
-----------------------------	------------	------------	------------	------------	----------	----------	----------	----------	----------	----------	----------	----------	------------	---------------

U.S. Bankruptcy Court - Western District of New York

Historical Case Filing Report (All Chapters)

Month Ending April 30, 2021

Report #3

Page 1 of 2

		2012	% Change	2013	% Change	2014	% Change	2015	% Change	2016	% Change	2017	% Change	2018	% Change	2019	% Change	2020	% Change	2021
Jan.	Buffalo	272	-7.4%	252	-4.0%	242	-22.7%	188	-2.1%	184	11.4%	205	-8.3%	188	-8.5%	172	8.7%	187	-50.8%	92
	Rochester	152	17.8%	179	-25.1%	134	-1.5%	131	-16.8%	109	-19.3%	88	13.6%	100	-2.0%	98	0.0%	98	-48.0%	51
	WDNY Total Month	424	1.7%	431	-12.8%	376	-15.2%	319	-8.2%	293	0.0%	293	-1.7%	288	-6.3%	270	5.6%	285	-49.8%	143
	WDNY Total YTD	424	1.7%	431	-12.8%	376	-15.2%	319	-8.2%	293	0.0%	293	-1.7%	288	-6.3%	270	5.6%	285	-49.8%	143
Feb.	Buffalo	351	-22.2%	273	-15.4%	231	-20.3%	184	15.2%	212	-11.8%	187	-0.5%	186	9.1%	203	-23.6%	155	-34.2%	102
	Rochester	183	-19.1%	148	-29.7%	104	-28.8%	74	32.4%	98	8.2%	106	-10.4%	95	-8.4%	87	1.1%	88	-13.6%	76
	WDNY Total Month	534	-21.2%	421	-20.4%	335	-23.0%	258	20.2%	310	-5.5%	293	-4.1%	281	3.2%	290	-16.2%	243	-26.7%	178
	WDNY Total YTD	958	-11.1%	852	-16.5%	711	-18.8%	577	4.5%	603	-2.8%	586	-2.9%	569	-1.6%	560	-5.7%	528	-39.2%	321
Mar.	Buffalo	419	-5.5%	396	-20.7%	314	-4.5%	300	-15.0%	255	9.0%	278	-7.2%	258	6.6%	275	-21.8%	215	-29.8%	151
	Rochester	237	-27.4%	172	0.0%	172	-23.8%	131	13.7%	149	-2.7%	145	0.0%	145	-17.2%	120	-3.3%	116	-37.9%	72
	WDNY Total Month	656	-13.4%	568	-14.4%	486	-11.3%	431	-6.3%	404	4.7%	423	-4.7%	403	-2.0%	395	-16.2%	331	-32.6%	223
	WDNY Total YTD	1,614	-12.0%	1,420	-15.7%	1,197	-15.8%	1,008	-0.1%	1,007	0.2%	1,009	-3.7%	972	-1.7%	955	-10.1%	859	-36.7%	544
Apr.	Buffalo	369	-10.3%	331	-0.9%	328	-5.2%	311	-15.4%	263	-1.1%	260	0.8%	262	4.2%	273	-64.8%	96	40.6%	135
	Rochester	221	-10.0%	199	-19.1%	161	8.7%	175	-12.6%	153	-18.3%	125	14.4%	143	-2.8%	139	-60.4%	55	41.8%	78
	WDNY Total Month	590	-10.2%	530	-7.7%	489	-0.6%	486	-14.4%	416	-7.5%	385	5.2%	405	1.7%	412	-63.3%	151	41.1%	213
	WDNY Total YTD	2,204	-11.5%	1,950	-13.5%	1,686	-11.4%	1,494	-4.8%	1,423	-2.0%	1,394	-1.2%	1,377	-0.7%	1,367	-26.1%	1,010	-25.0%	757
May	Buffalo	422	-20.1%	337	-15.4%	285	0.7%	287	-15.3%	243	15.6%	281	-16.0%	236	11.9%	264	-53.0%	124		
	Rochester	214	-4.2%	205	-15.1%	174	-18.4%	142	3.5%	147	-1.4%	145	-20.7%	115	7.8%	124	-46.0%	67		
	WDNY Total Month	636	-14.8%	542	-15.3%	459	-6.5%	429	-9.1%	390	9.2%	426	-17.6%	351	10.5%	388	-50.8%	191		
	WDNY Total YTD	2,840	-12.3%	2,492	-13.9%	2,145	-10.3%	1,923	-5.7%	1,813	0.4%	1,820	-5.1%	1,728	1.6%	1,755	-31.6%	1,201		
June	Buffalo	364	-11.3%	323	-15.5%	273	-12.5%	239	4.6%	250	-5.2%	237	-8.4%	217	-11.1%	193	-35.8%	124		
	Rochester	156	4.5%	163	-22.7%	126	5.6%	133	3.8%	138	0.7%	139	-12.2%	122	-11.5%	108	-23.1%	83		
	WDNY Total Month	520	-6.5%	486	-17.9%	399	-6.8%	372	4.3%	388	-3.1%	376	-9.8%	339	-11.2%	301	-31.2%	207		
	WDNY Total YTD	3,360	-11.4%	2,978	-14.6%	2,544	-9.8%	2,295	-4.1%	2,201	-0.2%	2,196	-5.9%	2,067	-0.5%	2,056	-31.5%	1,408		

U.S. Bankruptcy Court - Western District of New York
Historical Case Filing Report (All Chapters)

Report #3

Page 2 of 2

Month Ending April 30, 2021

		2012	% Change	2013	% Change	2014	% Change	2015	% Change	2016	% Change	2017	% Change	2018	% Change	2019	% Change	2020	% Change	2021
July	Buffalo	328	-13.7%	283	-17.3%	234	9.4%	257	-30.7%	178	34.8%	240	-11.7%	212	9.0%	231	-33.8%	153		
	Rochester	178	8.4%	193	-26.9%	141	-2.8%	137	-21.9%	107	5.6%	113	-8.8%	103	11.7%	115	-18.3%	94		
	WDNY Total Month	506	-5.9%	476	-21.2%	375	4.8%	394	-27.7%	285	23.9%	353	-10.8%	315	9.8%	346	-28.6%	247		
	WDNY Total YTD	3,866	-10.7%	3,454	-15.5%	2,919	-7.9%	2,689	-7.5%	2,486	2.5%	2,549	-6.6%	2,382	0.8%	2,402	-31.1%	1,655		
Aug	Buffalo	360	-15.6%	304	-23.4%	233	-8.2%	214	9.8%	235	3.4%	243	-8.2%	223	-11.2%	198	-25.8%	147		
	Rochester	179	-20.7%	142	-1.4%	140	-10.7%	126	-12.7%	110	10.0%	121	3.3%	125	-12.0%	110	-32.7%	74		
	WDNY Total Month	539	-17.3%	446	-16.4%	373	-9.1%	340	1.5%	345	5.5%	364	-4.4%	348	-11.5%	308	-28.2%	221		
	WDNY Total YTD	4,405	-11.5%	3,900	-15.6%	3,292	-8.0%	3,029	-6.5%	2,831	2.9%	2,913	-6.3%	2,730	-0.7%	2,710	-30.8%	1,876		
Sep	Buffalo	256	13.3%	290	-2.1%	284	0.0%	284	-18.3%	232	13.8%	264	12.9%	298	8.1%	322	-64.0%	116		
	Rochester	134	15.7%	155	-12.9%	135	-20.0%	108	6.5%	115	1.7%	117	-11.1%	104	1.9%	106	-32.1%	72		
	WDNY Total Month	390	14.1%	445	-5.8%	419	-6.4%	392	-11.5%	347	9.8%	381	5.5%	402	6.5%	428	-56.1%	188		
	WDNY Total YTD	4,795	-9.4%	4,345	-14.6%	3,711	-7.9%	3,421	-7.1%	3,178	3.7%	3,294	-4.9%	3,132	0.2%	3,138	-34.2%	2,064		
Oct	Buffalo	410	-4.6%	391	-24.0%	297	-11.8%	262	18.7%	311	-13.5%	269	21.6%	327	-18.3%	267	-50.9%	131		
	Rochester	162	-14.2%	139	-12.9%	121	9.9%	133	-13.5%	115	3.5%	119	-2.5%	116	4.3%	121	-43.8%	68		
	WDNY Total Month	572	-7.3%	530	-21.1%	418	-5.5%	395	7.8%	426	-8.9%	388	14.2%	443	-12.4%	388	-48.7%	199		
	WDNY Total YTD	5,367	-9.2%	4,875	-15.3%	4,129	-7.6%	3,816	-5.6%	3,604	2.2%	3,682	-2.9%	3,575	-1.4%	3,526	-35.8%	2,263		
Nov	Buffalo	265	-10.9%	236	-2.5%	230	-7.4%	213	-15.0%	181	20.4%	218	-17.0%	181	6.1%	192	-44.8%	106		
	Rochester	160	-16.3%	134	-5.2%	127	0.0%	127	-1.6%	125	-4.0%	120	0.8%	121	-7.4%	112	-29.5%	79		
	WDNY Total Month	425	-12.9%	370	-3.5%	357	-4.8%	340	-10.0%	306	10.5%	338	-10.7%	302	0.7%	304	-39.1%	185		
	WDNY Total YTD	5,792	-9.4%	5,245	-14.5%	4,486	-7.4%	4,156	-5.9%	3,910	2.8%	4,020	-3.6%	3,877	-1.2%	3,830	-36.1%	2,448		
Dec	Buffalo	260	-16.9%	216	-2.8%	210	-10.5%	189	-23.8%	144	27.8%	184	-21.7%	144	18.1%	170	-29.4%	120		
	Rochester	140	-9.3%	127	15.7%	147	-45.6%	80	28.8%	103	-11.7%	91	5.5%	96	-24.0%	73	-19.2%	59		
	WDNY Total Month	400	-14.3%	343	4.1%	357	-24.9%	269	-8.2%	247	11.3%	275	-12.7%	240	1.3%	243	-26.3%	179		
	WDNY Total YTD	6,192	-9.8%	5,588	-13.3%	4,843	-8.7%	4,425	-6.1%	4,157	3.3%	4,295	-4.1%	4,117	-1.1%	4,073	-35.5%	2,627		
		2012	% Change	2013	% Change	2014	% Change	2015	% Change	2016	% Change	2017	% Change	2018	% Change	2019	% Change	2020	% Change	2021
Buffalo Total		4,076	-10.9%	3,632	-13.0%	3,161	-7.4%	2,928	-8.2%	2,688	6.6%	2,866	-4.7%	2,732	1.0%	2,760	-39.3%	1,674		480
Rochester Total		2,116	-7.6%	1,956	-14.0%	1,682	-11.0%	1,497	-1.9%	1,469	-2.7%	1,429	-3.1%	1,385	-5.2%	1,313	-27.4%	953		277
WDNY Total		6,192	-9.8%	5,588	-13.3%	4,843	-8.6%	4,425	-6.1%	4,157	3.3%	4,295	-4.1%	4,117	-1.1%	4,073	-35.5%	2,627		757

U.S. Bankruptcy Court - Western District of New York

Caseload by Judge, Division & District

Month Ending April 30, 2021

Report #4

Page 1 of 2

		Chapter 7	Chapter 13	Chapter 11	Chapter 12/15	Cases Filed by Month	Cases Filed YTD	Adversary Cases				Case Closings		
								Pending Prior Month	New	Closed Current Month	Net Pending	Cases Closed 2020	Cases Closed 2021	% change
Jan.	Chief Judge Bucki	43	12	0	0	55	55	29	11	1	39	165	83	-49.7%
	Judge Kaplan	18	5	0	0	23	23	61	0	6	55	82	63	-23.2%
	Judge Warren(Buffalo)	13	1	0	0	14	14	0	0	0	0	16	15	-6.3%
	Judge Warren(Rochester)	41	9	1	0	51	51	6	0	0	6	129	77	-40.3%
	Buffalo Total	74	18	0	0	92	92	90	11	7	94	263	161	-38.8%
	Rochester Total	41	9	1	0	51	51	6	0	0	6	129	77	-40.3%
	WDNY Total	115	27	1	0	143	143	96	11	7	100	392	238	-39.3%
Feb.	Chief Judge Bucki	56	11	1	0	68	123	39	1	1	39	100	70	-30.0%
	Judge Kaplan	26	3	0	0	29	52	55	0	1	54	71	37	-47.9%
	Judge Warren(Buffalo)	4	1	0	0	5	19	0	0	0	0	23	6	-73.9%
	Judge Warren(Rochester)	56	20	0	0	76	127	6	0	2	4	126	92	-27.0%
	Buffalo Total	86	15	1	0	102	194	94	0	2	93	194	113	-41.8%
	Rochester Total	56	20	0	0	76	127	6	0	2	4	126	92	-27.0%
	WDNY Total	142	35	1	0	178	321	100	0	4	97	320	205	-35.9%
Mar.	Chief Judge Bucki	86	19	0	0	105	228	39	6	2	43	148	101	-31.8%
	Judge Kaplan	35	5	0	0	40	92	54	0	8	46	86	63	-26.7%
	Judge Warren(Buffalo)	6	0	0	0	6	25	0	0	0	0	24	3	-87.5%
	Judge Warren(Rochester)	53	18	1	0	72	199	4	0	0	4	108	77	-28.7%
	Buffalo Total	127	24	0	0	151	345	93	6	10	89	258	167	-35.3%
	Rochester Total	53	18	1	0	72	199	4	0	0	4	108	77	-28.7%
	WDNY Total	180	42	1	0	223	544	97	6	10	93	366	244	-33.3%
Apr.	Chief Judge Bucki	66	18	1	0	85	313	43	1	3	41	115	105	-8.7%
	Judge Kaplan	27	6	0	0	33	125	46	0	3	43	61	76	24.6%
	Judge Warren(Buffalo)	17	0	0	0	17	42	0	0	0	0	18	20	11.1%
	Judge Warren(Rochester)	68	10	0	0	78	277	4	0	2	2	98	82	-16.3%
	Buffalo Total	110	24	1	0	135	480	89	1	6	84	194	201	3.6%
	Rochester Total	68	10	0	0	78	277	4	0	2	2	98	82	-16.3%
	WDNY Total	178	34	1	0	213	757	93	1	8	86	292	283	-3.1%

U.S. Bankruptcy Court - Western District of New York

Caseload by Judge, Division & District

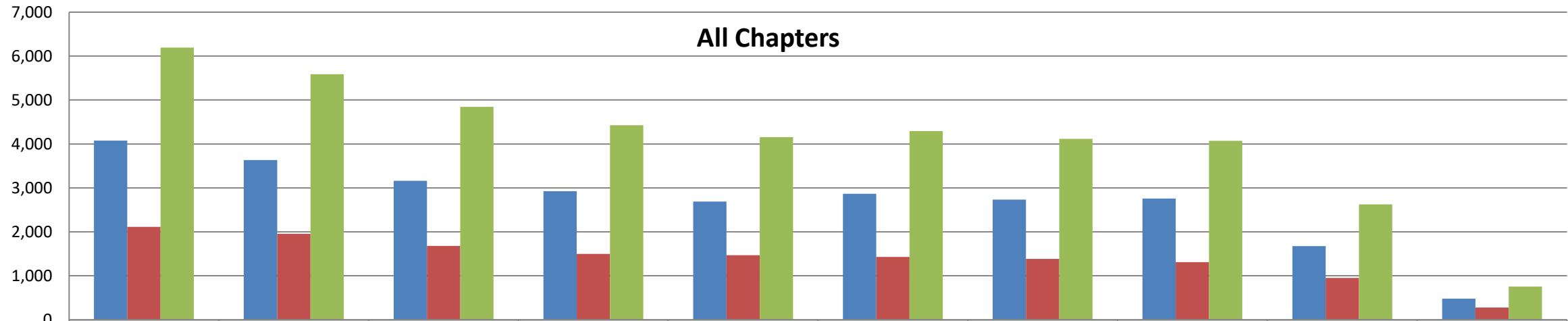
Month Ending April 30, 2021

Report # 4

Page 2 of 2

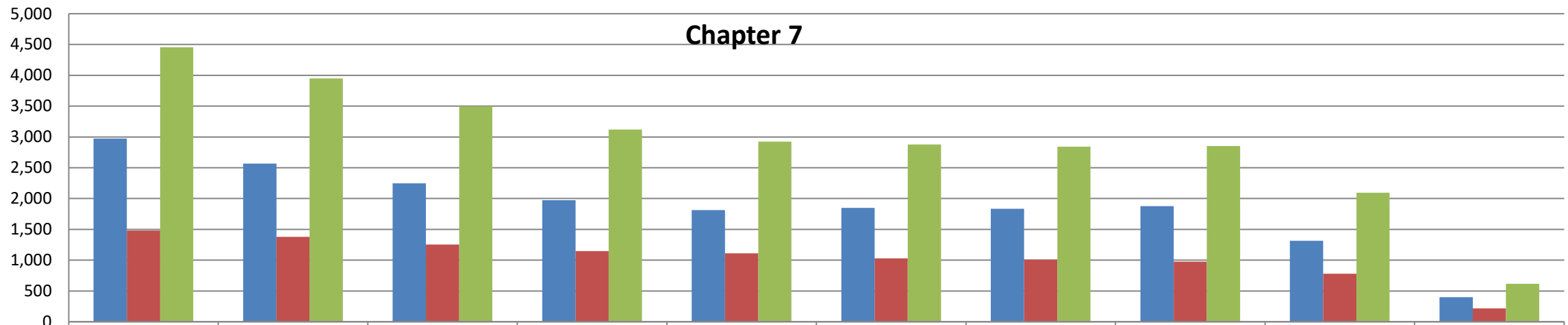
Year to Date	Chapter 7	Chapter 13	Chapter 11	Chapter 12 & 15	YTD Totals All Chapters	Adversary Cases YTD			Case Closings YTD		
						New	Closed	Net Pending	Cases Closed 2020	Cases Closed 2021	% change
Chief Judge Bucki YTD	251	60	2	0	313	19	7	41	528	359	-32.0%
Judge Kaplan YTD	106	19	0	0	125	0	18	43	300	239	-20.3%
Judge Warren (Buff & Roch) YTD	258	59	2	0	319	0	0	2	542	372	-31.4%
Judge Warren (Buffalo) YTD	40	2	0	0	42	0	0	0	81	44	-45.7%
Judge Warren (Rochester) YTD	218	57	2	0	277	0	4	2	461	328	-28.9%
Buffalo Total YTD	397	81	2	0	480	18	25	84	909	642	-29.4%
Rochester Total YTD	218	57	2	0	277	0	4	2	461	328	-28.9%
WDNY Totals YTD	615	138	4	0	757	18	29	86	1,370	970	-29.2%

All Chapters



	2012	2013	2014	2015	2016	2017	2018	2019	2020	2021
■ Buffalo	4,076	3,632	3,161	2,928	2,688	2,866	2,732	2,760	1,674	480
■ Rochester	2,116	1,956	1,682	1,497	1,469	1,429	1,385	1,313	953	277
■ WDNY Total	6,192	5,588	4,843	4,425	4,157	4,295	4,117	4,073	2,627	757

Chapter 7



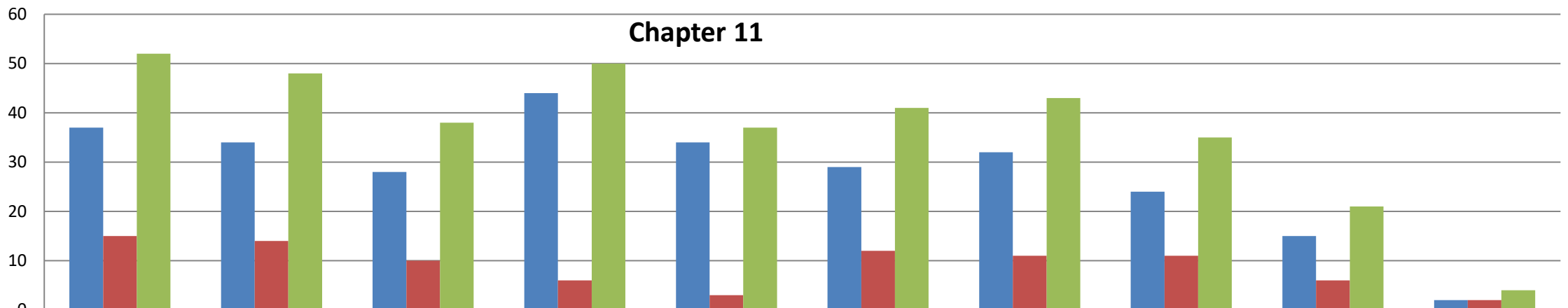
	2012	2013	2014	2015	2016	2017	2018	2019	2020	2021
■ Buffalo	2,974	2,569	2,246	1,974	1,813	1,849	1,835	1,877	1,315	397
■ Rochester	1,481	1,379	1,252	1,145	1,110	1,029	1,007	975	780	218
■ WDNY Total	4,455	3,948	3,498	3,119	2,923	2,878	2,842	2,852	2,095	615

Chapter 13 (includes Chapter 12 & 15)



	2012	2013	2014	2015	2016	2017	2018	2019	2020	2021
Buffalo	1,065	1,029	887	909	841	988	865	859	344	81
Rochester	620	563	420	347	356	388	367	327	167	57
WDNY Totals	1,685	1,592	1,307	1,256	1,197	1,376	1,232	1,186	511	138

Chapter 11



	2012	2013	2014	2015	2016	2017	2018	2019	2020	2021
Buffalo	37	34	28	44	34	29	32	24	15	2
Rochester	15	14	10	6	3	12	11	11	6	2
WDNY Totals	52	48	38	50	37	41	43	35	21	4