

Month Ending December 31, 2018

| | | Cases Filed 2017 | Cases Filed 2018 | % change same month | % change YTD | Chapter 7 | | | | Chapter 13 | | | | Chapter 11 | Ch 12 & 15 |
|------|------------------|---------------------|---------------------|------------------------|-----------------|-----------------------|-----------------------|--------------------|-------------|-----------------------|-----------------------|--------------------|-------------|------------|------------|
| | | | | | | ¹ Non-Bus. | ² Business | ³ Other | Total Ch. 7 | ¹ Non-Bus. | ² Business | ³ Other | Total Ch.13 | | |
| Jan. | Buffalo | 205 | 188 | -8.3% | -8.3% | 121 | 4 | 1 | 126 | 61 | 1 | 0 | 62 | 0 | 0 |
| | Rochester | 88 | 100 | 13.6% | 13.6% | 70 | 3 | 0 | 73 | 22 | 2 | 0 | 24 | 3 | 0 |
| | WDNY Total Month | 293 | 288 | -1.7% | -1.7% | 191 | 7 | 1 | 199 | 83 | 3 | 0 | 86 | 3 | 0 |
| | WDNY Total YTD | 293 | 288 | | | 191 | 7 | 1 | 199 | 83 | 3 | 0 | 86 | 3 | 0 |
| Feb. | Buffalo | 187 | 186 | -0.5% | -4.6% | 119 | 2 | 0 | 121 | 63 | 1 | 0 | 64 | 0 | 1 |
| | Rochester | 106 | 95 | -10.4% | 0.5% | 63 | 0 | 0 | 63 | 27 | 3 | 0 | 30 | 2 | 0 |
| | WDNY Total Month | 293 | 281 | -4.1% | -2.9% | 182 | 2 | 0 | 184 | 90 | 4 | 0 | 94 | 2 | 1 |
| | WDNY Total YTD | 586 | 569 | | | 373 | 9 | 1 | 383 | 173 | 7 | 0 | 180 | 5 | 1 |
| Mar. | Buffalo | 278 | 258 | -7.2% | -5.7% | 191 | 3 | 1 | 195 | 61 | 2 | 0 | 63 | 0 | 0 |
| | Rochester | 145 | 145 | 0.0% | 0.3% | 102 | 6 | 1 | 109 | 36 | 0 | 0 | 36 | 0 | 0 |
| | WDNY Total Month | 423 | 403 | -4.7% | -3.7% | 293 | 9 | 2 | 304 | 97 | 2 | 0 | 99 | 0 | 0 |
| | WDNY Total YTD | 1,009 | 972 | | | 666 | 18 | 3 | 687 | 270 | 9 | 0 | 279 | 5 | 1 |
| Apr. | Buffalo | 260 | 262 | 0.8% | -3.9% | 175 | 2 | 0 | 177 | 74 | 0 | 0 | 74 | 10 | 1 |
| | Rochester | 125 | 143 | 14.4% | 4.1% | 107 | 4 | 0 | 111 | 31 | 1 | 0 | 32 | 0 | 0 |
| | WDNY Total Month | 385 | 405 | 5.2% | -1.2% | 282 | 6 | 0 | 288 | 105 | 1 | 0 | 106 | 10 | 1 |
| | WDNY Total YTD | 1,394 | 1,377 | | | 948 | 24 | 3 | 975 | 375 | 10 | 0 | 385 | 15 | 2 |
| May | Buffalo | 281 | 236 | -16.0% | -6.7% | 173 | 3 | 3 | 179 | 55 | 0 | 0 | 55 | 2 | 0 |
| | Rochester | 145 | 115 | -20.7% | -1.8% | 75 | 5 | 0 | 80 | 34 | 0 | 0 | 34 | 0 | 1 |
| | WDNY Total Month | 426 | 351 | -17.6% | -5.1% | 248 | 8 | 3 | 259 | 89 | 0 | 0 | 89 | 2 | 1 |
| | WDNY Total YTD | 1,820 | 1,728 | | | 1,196 | 32 | 6 | 1,234 | 464 | 10 | 0 | 474 | 17 | 3 |
| June | Buffalo | 237 | 217 | -8.4% | -7.0% | 140 | 2 | 0 | 142 | 71 | 0 | 0 | 71 | 3 | 1 |
| | Rochester | 139 | 122 | -12.2% | -3.7% | 92 | 3 | 0 | 95 | 26 | 0 | 1 | 27 | 0 | 0 |
| | WDNY Total Month | 376 | 339 | -9.8% | -5.9% | 232 | 5 | 0 | 237 | 97 | 0 | 1 | 98 | 3 | 1 |
| | WDNY Total YTD | 2,196 | 2,067 | | | 1,428 | 37 | 6 | 1,471 | 561 | 10 | 1 | 572 | 20 | 4 |
| July | Buffalo | 240 | 212 | -11.7% | -7.6% | 147 | 4 | 0 | 151 | 57 | 0 | 0 | 57 | 4 | 0 |
| | Rochester | 113 | 103 | -8.8% | -4.4% | 68 | 4 | 2 | 74 | 27 | 1 | 0 | 28 | 1 | 0 |
| | WDNY Total Month | 353 | 315 | -10.8% | -6.6% | 215 | 8 | 2 | 225 | 84 | 1 | 0 | 85 | 5 | 0 |
| | WDNY Total YTD | 2,549 | 2,382 | | | 1,643 | 45 | 8 | 1,696 | 645 | 11 | 1 | 657 | 25 | 4 |

¹ Primary "Nature of Debt" is consumer debt.

² Primary "Nature of Debt" is business debt.

³ Primary "Nature of Debt" is other.

Month Ending December 31, 2018

| | | Cases Filed 2017 | Cases Filed 2018 | % change same month | % change YTD | Chapter 7 | | | | Chapter 13 | | | | Chapter 11 | Ch. 12 & 15 |
|---------------------|---------------------|---------------------|---------------------|------------------------|-----------------|-----------------------|-----------------------|--------------------|--------------|-----------------------|-----------------------|--------------------|-------------|-------------------|------------------------|
| | | | | | | ¹ Non-Bus. | ² Business | ³ Other | Total Ch. 7 | ¹ Non-Bus. | ² Business | ³ Other | Total Ch.13 | | |
| Aug. | Buffalo | 243 | 223 | -8.2% | -7.7% | 147 | 3 | 0 | 150 | 72 | 0 | 0 | 72 | 1 | 0 |
| | Rochester | 121 | 125 | 3.3% | -3.5% | 79 | 3 | 0 | 82 | 39 | 2 | 0 | 41 | 1 | 1 |
| | WDNY Total Month | 364 | 348 | -4.4% | -6.3% | 226 | 6 | 0 | 232 | 111 | 2 | 0 | 113 | 2 | 1 |
| | WDNY Total YTD | 2,913 | 2,730 | | | 1,869 | 51 | 8 | 1,928 | 756 | 13 | 1 | 770 | 27 | 5 |
| Sep. | Buffalo | 264 | 298 | 12.9% | -5.2% | 158 | 4 | 0 | 162 | 129 | 3 | 0 | 132 | 4 | 0 |
| | Rochester | 117 | 104 | -11.1% | -4.3% | 70 | 4 | 0 | 74 | 27 | 2 | 1 | 30 | 0 | 0 |
| | WDNY Total Month | 381 | 402 | 5.5% | -4.9% | 228 | 8 | 0 | 236 | 156 | 5 | 1 | 162 | 4 | 0 |
| | WDNY Total YTD | 3,294 | 3,132 | | | 2,097 | 59 | 8 | 2,164 | 912 | 18 | 2 | 932 | 31 | 5 |
| Oct. | Buffalo | 269 | 327 | 21.6% | -2.3% | 188 | 6 | 1 | 195 | 121 | 7 | 0 | 128 | 4 | 0 |
| | Rochester | 119 | 116 | -2.5% | -4.1% | 82 | 0 | 1 | 83 | 30 | 1 | 0 | 31 | 2 | 0 |
| | WDNY Total Month | 388 | 443 | 14.2% | -2.9% | 270 | 6 | 2 | 278 | 151 | 8 | 0 | 159 | 6 | 0 |
| | WDNY Total YTD | 3,682 | 3,575 | | | 2,367 | 65 | 10 | 2,442 | 1,063 | 26 | 2 | 1,091 | 37 | 5 |
| Nov. | Buffalo | 218 | 181 | -17.0% | -3.5% | 122 | 5 | 0 | 127 | 48 | 2 | 1 | 51 | 3 | 0 |
| | Rochester | 120 | 121 | 0.8% | -3.7% | 90 | 0 | 0 | 90 | 30 | 0 | 0 | 30 | 1 | 0 |
| | WDNY Total Month | 338 | 302 | -10.7% | -3.6% | 212 | 5 | 0 | 217 | 78 | 2 | 1 | 81 | 4 | 0 |
| | WDNY Total YTD | 4,020 | 3,877 | | | 2,579 | 70 | 10 | 2,659 | 1,141 | 28 | 3 | 1,172 | 41 | 5 |
| Dec. | Buffalo | 184 | 144 | -21.7% | -4.7% | 105 | 5 | 0 | 110 | 33 | 0 | 0 | 33 | 1 | 0 |
| | Rochester | 91 | 96 | 5.5% | -3.1% | 74 | 1 | 0 | 75 | 20 | 0 | 0 | 20 | 1 | 0 |
| | WDNY Total Month | 275 | 240 | -12.7% | -4.1% | 179 | 6 | 0 | 185 | 53 | 0 | 0 | 53 | 2 | 0 |
| | WDNY Total YTD | 4,295 | 4,117 | | | 2,758 | 76 | 10 | 2,844 | 1,194 | 28 | 3 | 1,225 | 43 | 5 |
| Year to Date | Cases Filed 2017 | | | % change | | Chapter 7 YTD | | | | Chapter 13 YTD | | | | Chapter 11 YTD | Chapter 12 & 15 YTD |
| | | | | | | ¹ Non-Bus. | ² Business | ³ Other | Total Ch. 7 | ¹ Non-Bus. | ² Business | ³ Other | Total Ch.13 | | |
| | Buffalo YTD | 2,866 | 2,732 | -4.7% | | 1,786 | 43 | 6 | 1,835 | 845 | 16 | 1 | 862 | 32 | 3 |
| | Rochester YTD | 1,429 | 1,385 | -3.1% | | 972 | 33 | 4 | 1,009 | 349 | 12 | 2 | 363 | 11 | 2 |
| WDNY YTD | 4,295 | 4,117 | -4.1% | | 2,758 | 76 | 10 | 2,844 | 1,194 | 28 | 3 | 1,225 | 43 | 5 | |

¹ Primary "Nature of Debt" is consumer debt.

² Primary "Nature of Debt" is business debt.

³ Primary "Nature of Debt" is other.

U.S. Bankruptcy Court - Western District of New York

Case Filings by County

Month Ending December 31, 2018

Report # 2

Page 1 of 1

| Counties in Division | Buffalo | Jan. | Feb. | March | April | May | June | July | Aug. | Sept. | Oct. | Nov. | Dec. | County Totals 2018 YTD | % chg from 2017 YTD |
|----------------------|---------|------------|------------|------------|------------|------------|------------|------------|------------|------------|------------|------------|------------|------------------------|---------------------|
| (Olean) Allegany | | 1 | 1 | 2 | 4 | 2 | 4 | 5 | 3 | 3 | 5 | 3 | 2 | 35 | -23.9% |
| (Olean) Cattaraugus | | 8 | 7 | 9 | 6 | 7 | 5 | 6 | 5 | 12 | 7 | 9 | 3 | 84 | -16.0% |
| Chautauqua | | 13 | 18 | 26 | 28 | 25 | 15 | 20 | 16 | 13 | 24 | 7 | 13 | 218 | -4.4% |
| Erie | | 123 | 127 | 163 | 170 | 152 | 148 | 134 | 148 | 231 | 244 | 124 | 99 | 1,863 | -3.2% |
| (Batavia) Genesee | | 7 | 5 | 10 | 5 | 3 | 6 | 3 | 10 | 2 | 8 | 4 | 3 | 66 | 11.9% |
| Niagara | | 26 | 23 | 37 | 33 | 38 | 31 | 36 | 32 | 34 | 33 | 29 | 18 | 370 | -10.8% |
| (Batavia) Orleans | | 7 | 3 | 8 | 7 | 5 | 4 | 5 | 5 | 3 | 6 | 4 | 3 | 60 | 27.7% |
| (Batavia) Wyoming | | 3 | 2 | 3 | 9 | 4 | 4 | 3 | 4 | 0 | 0 | 1 | 3 | 36 | -20.0% |
| Out of County | | 0 | 0 | 0 | 0 | 0 | 0 | 0 | 0 | 0 | 0 | 0 | 0 | 0 | |
| 2018 Totals | | 188 | 186 | 258 | 262 | 236 | 217 | 212 | 223 | 298 | 327 | 181 | 144 | 2,732 | -4.7% |

| Counties in Division | Rochester | Jan. | Feb. | March | April | May | June | July | Aug. | Sept. | Oct. | Nov. | Dec. | County Totals 2018 YTD | % chg from 2017 YTD |
|----------------------|-----------|------------|-----------|------------|------------|------------|------------|------------|------------|------------|------------|------------|-----------|------------------------|---------------------|
| (WG) Chemung | | 8 | 2 | 11 | 11 | 7 | 6 | 5 | 8 | 6 | 8 | 11 | 7 | 90 | -16.7% |
| Livingston | | 2 | 3 | 2 | 4 | 9 | 9 | 3 | 7 | 5 | 3 | 2 | 5 | 54 | -1.8% |
| Monroe | | 75 | 72 | 95 | 85 | 76 | 75 | 76 | 78 | 76 | 75 | 80 | 59 | 922 | 3.4% |
| Ontario | | 5 | 8 | 7 | 13 | 6 | 7 | 8 | 9 | 3 | 11 | 8 | 7 | 92 | -22.0% |
| (WG) Schuyler | | 1 | 0 | 4 | 2 | 2 | 1 | 0 | 2 | 1 | 2 | 3 | 3 | 21 | 16.7% |
| Seneca | | 4 | 3 | 5 | 4 | 2 | 4 | 3 | 1 | 2 | 2 | 1 | 1 | 32 | 23.1% |
| (WG) Steuben | | 2 | 3 | 10 | 16 | 5 | 5 | 3 | 4 | 5 | 10 | 5 | 8 | 76 | -19.1% |
| Wayne | | 3 | 2 | 10 | 5 | 6 | 11 | 5 | 15 | 6 | 4 | 11 | 6 | 84 | -20.8% |
| Yates | | 0 | 2 | 1 | 3 | 2 | 3 | 0 | 1 | 0 | 1 | 0 | 0 | 13 | 8.3% |
| Out of County | | 0 | 0 | 0 | 0 | 0 | 1 | 0 | 0 | 0 | 0 | 0 | 0 | 1 | |
| 2018 Totals | | 100 | 95 | 145 | 143 | 115 | 122 | 103 | 125 | 104 | 116 | 121 | 96 | 1,385 | -3.1% |

| | | | | | | | | | | | | | | | |
|-----------------------------|--|------------|------------|------------|------------|------------|------------|------------|------------|------------|------------|------------|------------|--------------|--------------|
| WDNY Combined Totals | | 288 | 281 | 403 | 405 | 351 | 339 | 315 | 348 | 402 | 443 | 302 | 240 | 4,117 | -4.1% |
|-----------------------------|--|------------|------------|------------|------------|------------|------------|------------|------------|------------|------------|------------|------------|--------------|--------------|

U.S. Bankruptcy Court - Western District of New York

Historical Case Filing Report (All Chapters)

Month Ending December 31, 2018

Report # 3

Page 1 of 2

| | | 2009 | % Change | 2010 | % Change | 2011 | % Change | 2012 | % Change | 2013 | % Change | 2014 | % Change | 2015 | % Change | 2016 | % Change | 2017 | % Change | 2018 |
|------|-----------------------|--------------|---------------|--------------|---------------|--------------|---------------|--------------|---------------|--------------|---------------|--------------|---------------|--------------|--------------|--------------|--------------|--------------|--------------|--------------|
| Jan. | Buffalo | 382 | -8.4% | 350 | -19.7% | 281 | -3.2% | 272 | -7.4% | 252 | -4.0% | 242 | -22.7% | 188 | -2.1% | 184 | 11.4% | 205 | -8.3% | 188 |
| | Rochester | 228 | -16.7% | 190 | -19.5% | 153 | -0.7% | 152 | 17.8% | 179 | -25.1% | 134 | -1.5% | 131 | -16.8% | 109 | -19.3% | 88 | 13.6% | 100 |
| | WDNY Total Month | 610 | -11.5% | 540 | -19.6% | 434 | -2.3% | 424 | 1.7% | 431 | -12.8% | 376 | -15.2% | 319 | -8.2% | 293 | 0.0% | 293 | -1.7% | 288 |
| | WDNY Total YTD | 610 | -11.5% | 540 | -19.6% | 434 | -2.3% | 424 | 1.7% | 431 | -12.8% | 376 | -15.2% | 319 | -8.2% | 293 | 0.0% | 293 | -1.7% | 288 |
| Feb. | Buffalo | 400 | -8.0% | 368 | -0.8% | 365 | -3.8% | 351 | -22.2% | 273 | -15.4% | 231 | -20.3% | 184 | 15.2% | 212 | -11.8% | 187 | -0.5% | 186 |
| | Rochester | 233 | -15.0% | 198 | -1.0% | 196 | -6.6% | 183 | -19.1% | 148 | -29.7% | 104 | -28.8% | 74 | 32.4% | 98 | 8.2% | 106 | -10.4% | 95 |
| | WDNY Total Month | 633 | -10.6% | 566 | -0.9% | 561 | -4.8% | 534 | -21.2% | 421 | -20.4% | 335 | -23.0% | 258 | 20.2% | 310 | -5.5% | 293 | -4.1% | 281 |
| | WDNY Total YTD | 1,243 | -11.0% | 1,106 | -10.0% | 995 | -3.7% | 958 | -11.1% | 852 | -16.5% | 711 | -18.8% | 577 | 4.5% | 603 | -2.8% | 586 | -2.9% | 569 |
| Mar. | Buffalo | 562 | 10.1% | 619 | -22.5% | 480 | -12.7% | 419 | -5.5% | 396 | -20.7% | 314 | -4.5% | 300 | -15.0% | 255 | 9.0% | 278 | -7.2% | 258 |
| | Rochester | 358 | -7.5% | 331 | -11.8% | 292 | -18.8% | 237 | -27.4% | 172 | 0.0% | 172 | -23.8% | 131 | 13.7% | 149 | -2.7% | 145 | 0.0% | 145 |
| | WDNY Total Month | 920 | 3.3% | 950 | -18.7% | 772 | -15.0% | 656 | -13.4% | 568 | -14.4% | 486 | -11.3% | 431 | -6.3% | 404 | 4.7% | 423 | -4.7% | 403 |
| | WDNY Total YTD | 2,163 | -4.9% | 2,056 | -14.1% | 1,767 | -8.7% | 1,614 | -12.0% | 1,420 | -15.7% | 1,197 | -15.8% | 1,008 | -0.1% | 1,007 | 0.2% | 1,009 | -3.7% | 972 |
| Apr. | Buffalo | 646 | -17.3% | 534 | -7.5% | 494 | -25.3% | 369 | -10.3% | 331 | -0.9% | 328 | -5.2% | 311 | -15.4% | 263 | -1.1% | 260 | 0.8% | 262 |
| | Rochester | 345 | 0.0% | 345 | -28.4% | 247 | -10.5% | 221 | -10.0% | 199 | -19.1% | 161 | 8.7% | 175 | -12.6% | 153 | -18.3% | 125 | 14.4% | 143 |
| | WDNY Total Month | 991 | -11.3% | 879 | -15.7% | 741 | -20.4% | 590 | -10.2% | 530 | -7.7% | 489 | -0.6% | 486 | -14.4% | 416 | -7.5% | 385 | 5.2% | 405 |
| | WDNY Total YTD | 3,154 | -6.9% | 2,935 | -14.5% | 2,508 | -12.1% | 2,204 | -11.5% | 1,950 | -13.5% | 1,686 | -11.4% | 1,494 | -4.8% | 1,423 | -2.0% | 1,394 | -1.2% | 1,377 |
| May | Buffalo | 533 | 10.7% | 590 | -30.7% | 409 | 3.2% | 422 | -20.1% | 337 | -15.4% | 285 | 0.7% | 287 | -15.3% | 243 | 15.6% | 281 | -16.0% | 236 |
| | Rochester | 318 | -0.9% | 315 | -31.4% | 216 | -0.9% | 214 | -4.2% | 205 | -15.1% | 174 | -18.4% | 142 | 3.5% | 147 | -1.4% | 145 | -20.7% | 115 |
| | WDNY Total Month | 851 | 6.3% | 905 | -30.9% | 625 | 1.8% | 636 | -14.8% | 542 | -15.3% | 459 | -6.5% | 429 | -9.1% | 390 | 9.2% | 426 | -17.6% | 351 |
| | WDNY Total YTD | 4,005 | -4.1% | 3,840 | -18.4% | 3,133 | -9.4% | 2,840 | -12.3% | 2,492 | -13.9% | 2,145 | -10.3% | 1,923 | -5.7% | 1,813 | 0.4% | 1,820 | -5.1% | 1,728 |
| June | Buffalo | 592 | -7.6% | 547 | -21.9% | 427 | -14.8% | 364 | -11.3% | 323 | -15.5% | 273 | -12.5% | 239 | 4.6% | 250 | -5.2% | 237 | -8.4% | 217 |
| | Rochester | 299 | -5.0% | 284 | -13.4% | 246 | -36.6% | 156 | 4.5% | 163 | -22.7% | 126 | 5.6% | 133 | 3.8% | 138 | 0.7% | 139 | -12.2% | 122 |
| | WDNY Total Month | 891 | -6.7% | 831 | -19.0% | 673 | -22.7% | 520 | -6.5% | 486 | -17.9% | 399 | -6.8% | 372 | 4.3% | 388 | -3.1% | 376 | -9.8% | 339 |
| | WDNY Total YTD | 4,896 | -4.6% | 4,671 | -18.5% | 3,806 | -11.7% | 3,360 | -11.4% | 2,978 | -14.6% | 2,544 | -9.8% | 2,295 | -4.1% | 2,201 | -0.2% | 2,196 | -5.9% | 2,067 |

U.S. Bankruptcy Court - Western District of New York

Historical Case Filing Report (All Chapters)

Month Ending December 31, 2018

Report # 3

Page 2 of 2

| | | 2009 | % Change | 2010 | % Change | 2011 | % Change | 2012 | % Change | 2013 | % Change | 2014 | % Change | 2015 | % Change | 2016 | % Change | 2017 | % Change | 2018 |
|------------------------|-----------------------|--------------|-----------------|--------------|-----------------|--------------|-----------------|--------------|-----------------|--------------|-----------------|--------------|-----------------|--------------|-----------------|--------------|-----------------|--------------|-----------------|--------------|
| July | Buffalo | 570 | -15.1% | 484 | -33.5% | 322 | 1.9% | 328 | -13.7% | 283 | -17.3% | 234 | 9.4% | 257 | -30.7% | 178 | 34.8% | 240 | -11.7% | 212 |
| | Rochester | 287 | -13.6% | 248 | -23.8% | 189 | -5.8% | 178 | 8.4% | 193 | -26.9% | 141 | -2.8% | 137 | -21.9% | 107 | 5.6% | 113 | -8.8% | 103 |
| | WDNY Total Month | 857 | -14.6% | 732 | -30.2% | 511 | -1.0% | 506 | -5.9% | 476 | -21.2% | 375 | 4.8% | 394 | -27.7% | 285 | 23.9% | 353 | -10.8% | 315 |
| | WDNY Total YTD | 5,753 | -6.1% | 5,403 | -20.1% | 4,317 | -10.4% | 3,866 | -10.7% | 3,454 | -15.5% | 2,919 | -7.9% | 2,689 | -7.5% | 2,486 | 2.5% | 2,549 | -6.6% | 2,382 |
| Aug | Buffalo | 550 | -15.5% | 465 | -16.6% | 388 | -7.2% | 360 | -15.6% | 304 | -23.4% | 233 | -8.2% | 214 | 9.8% | 235 | 3.4% | 243 | -8.2% | 223 |
| | Rochester | 288 | -1.4% | 284 | -25.0% | 213 | -16.0% | 179 | -20.7% | 142 | -1.4% | 140 | -10.7% | 126 | -12.7% | 110 | 10.0% | 121 | 3.3% | 125 |
| | WDNY Total Month | 838 | -10.6% | 749 | -19.8% | 601 | -10.3% | 539 | -17.3% | 446 | -16.4% | 373 | -9.1% | 340 | 1.5% | 345 | 5.5% | 364 | -4.4% | 348 |
| | WDNY Total YTD | 6,591 | -6.6% | 6,153 | -20.1% | 4,919 | -10.4% | 4,405 | -11.5% | 3,900 | -15.6% | 3,292 | -8.0% | 3,029 | -6.5% | 2,831 | 2.9% | 2,913 | -6.3% | 2,730 |
| Sep | Buffalo | 475 | -5.7% | 448 | -6.3% | 420 | -39.0% | 256 | 13.3% | 290 | -2.1% | 284 | 0.0% | 284 | -18.3% | 232 | 13.8% | 264 | 12.9% | 298 |
| | Rochester | 286 | -9.4% | 259 | -29.7% | 182 | -26.4% | 134 | 15.7% | 155 | -12.9% | 135 | -20.0% | 108 | 6.5% | 115 | 1.7% | 117 | -11.1% | 104 |
| | WDNY Total Month | 761 | -7.1% | 707 | -14.9% | 602 | -35.2% | 390 | 14.1% | 445 | -5.8% | 419 | -6.4% | 392 | -11.5% | 347 | 9.8% | 381 | 5.5% | 402 |
| | WDNY Total YTD | 7,352 | -6.7% | 6,860 | -19.5% | 5,522 | -13.2% | 4,795 | -9.4% | 4,345 | -14.6% | 3,711 | -7.9% | 3,421 | -7.1% | 3,178 | 3.7% | 3,294 | -4.9% | 3,132 |
| Oct | Buffalo | 594 | -21.2% | 468 | -22.6% | 362 | 13.3% | 410 | -4.6% | 391 | -24.0% | 297 | -11.8% | 262 | 18.7% | 311 | -13.5% | 269 | 21.6% | 327 |
| | Rochester | 323 | -21.7% | 253 | -32.0% | 172 | -5.8% | 162 | -14.2% | 139 | -12.9% | 121 | 9.9% | 133 | -13.5% | 115 | 3.5% | 119 | -2.5% | 116 |
| | WDNY Total Month | 917 | -21.4% | 721 | -25.9% | 534 | 7.1% | 572 | -7.3% | 530 | -21.1% | 418 | -5.5% | 395 | 7.8% | 426 | -8.9% | 388 | 14.2% | 443 |
| | WDNY Total YTD | 8,269 | -8.3% | 7,581 | -20.1% | 6,055 | -11.4% | 5,367 | -9.2% | 4,875 | -15.3% | 4,129 | -7.6% | 3,816 | -5.6% | 3,604 | 2.2% | 3,682 | -2.9% | 3,575 |
| Nov | Buffalo | 494 | -13.0% | 430 | -22.3% | 334 | -20.7% | 265 | -10.9% | 236 | -2.5% | 230 | -7.4% | 213 | -15.0% | 181 | 20.4% | 218 | -17.0% | 181 |
| | Rochester | 286 | -25.2% | 214 | -7.9% | 197 | -18.8% | 160 | -16.3% | 134 | -5.2% | 127 | 0.0% | 127 | -1.6% | 125 | -4.0% | 120 | 0.8% | 121 |
| | WDNY Total Month | 780 | -17.4% | 644 | -17.5% | 531 | -20.0% | 425 | -12.9% | 370 | -3.5% | 357 | -4.8% | 340 | -10.0% | 306 | 10.5% | 338 | -10.7% | 302 |
| | WDNY Total YTD | 9,049 | -9.1% | 8,225 | -19.9% | 6,585 | -12.0% | 5,792 | -9.4% | 5,245 | -14.5% | 4,486 | -7.4% | 4,156 | -5.9% | 3,910 | 2.8% | 4,020 | -3.6% | 3,877 |
| Dec | Buffalo | 440 | -23.6% | 336 | -2.4% | 328 | -20.7% | 260 | -16.9% | 216 | -2.8% | 210 | -10.5% | 189 | -23.8% | 144 | 27.8% | 184 | -21.7% | 144 |
| | Rochester | 240 | -16.3% | 201 | -13.4% | 174 | -19.5% | 140 | -9.3% | 127 | 15.7% | 147 | -45.6% | 80 | 28.8% | 103 | -11.7% | 91 | 5.5% | 96 |
| | WDNY Total Month | 680 | -21.0% | 537 | -6.5% | 502 | -20.3% | 400 | -14.3% | 343 | 4.1% | 357 | -24.9% | 269 | -8.2% | 247 | 11.3% | 275 | -12.7% | 240 |
| | WDNY Total YTD | 9,729 | -9.9% | 8,762 | -19.1% | 7,087 | -12.6% | 6,192 | -9.8% | 5,588 | -13.3% | 4,843 | -8.7% | 4,425 | -6.1% | 4,157 | 3.3% | 4,295 | -4.1% | 4,117 |
| | | 2009 | % Change | 2010 | % Change | 2011 | % Change | 2012 | % Change | 2013 | % Change | 2014 | % Change | 2015 | % Change | 2016 | % Change | 2017 | % Change | 2018 |
| Buffalo Total | | 6,238 | -9.6% | 5,639 | -18.2% | 4,610 | -11.6% | 4,076 | -10.9% | 3,632 | -13.0% | 3,161 | -7.4% | 2,928 | -8.2% | 2,688 | 6.6% | 2,866 | -4.7% | 2,732 |
| Rochester Total | | 3,491 | -10.6% | 3,122 | -20.7% | 2,477 | -14.6% | 2,116 | -7.6% | 1,956 | -14.0% | 1,682 | -11.0% | 1,497 | -1.9% | 1,469 | -2.7% | 1,429 | -3.1% | 1,385 |
| WDNY Total | | 9,729 | -9.9% | 8,761 | -19.1% | 7,087 | -12.6% | 6,192 | -9.8% | 5,588 | -13.3% | 4,843 | -8.6% | 4,425 | -6.1% | 4,157 | 3.3% | 4,295 | -4.1% | 4,117 |

Month Ending December 31, 2018

| | | Chapter 7 | Chapter 13 | Chapter 11 | Chapter 12/15 | Cases Filed by Month | Cases Filed YTD | Adversary Cases | | | | Case Closings | | |
|------|-------------------|------------|------------|------------|---------------|----------------------|-----------------|---------------------|-----------|----------------------|-------------|-------------------|-------------------|--------------|
| | | | | | | | | Pending Prior Month | New | Closed Current Month | Net Pending | Cases Closed 2017 | Cases Closed 2018 | % change |
| Jan. | Chief Judge Bucki | 61 | 32 | 0 | 0 | 93 | 93 | 32 | 1 | 3 | 30 | 131 | 136 | 3.8% |
| | Judge Kaplan | 65 | 30 | 0 | 0 | 95 | 95 | 96 | 5 | 36 | 65 | 131 | 131 | 0.0% |
| | Judge Warren | 73 | 24 | 3 | 0 | 100 | 100 | 10 | 6 | 2 | 14 | 129 | 114 | -11.6% |
| | Buffalo Total | 126 | 62 | 0 | 0 | 188 | 188 | 128 | 6 | 39 | 95 | 262 | 267 | 1.9% |
| | Rochester Total | 73 | 24 | 3 | 0 | 100 | 100 | 10 | 6 | 2 | 14 | 129 | 114 | -11.6% |
| | WDNY Total | 199 | 86 | 3 | 0 | 288 | 288 | 138 | 12 | 41 | 109 | 391 | 381 | -2.6% |
| Feb. | Chief Judge Bucki | 61 | 35 | 0 | 1 | 97 | 190 | 30 | 0 | 1 | 29 | 125 | 81 | -35.2% |
| | Judge Kaplan | 59 | 30 | 0 | 0 | 89 | 184 | 65 | 0 | 7 | 58 | 104 | 93 | -10.6% |
| | Judge Warren | 63 | 30 | 2 | 0 | 95 | 195 | 14 | 30 | 1 | 43 | 120 | 158 | 31.7% |
| | Buffalo Total | 120 | 65 | 0 | 1 | 186 | 374 | 95 | 0 | 8 | 87 | 229 | 174 | -24.0% |
| | Rochester Total | 63 | 30 | 2 | 0 | 95 | 195 | 14 | 30 | 1 | 43 | 120 | 158 | 31.7% |
| | WDNY Total | 183 | 95 | 2 | 1 | 281 | 569 | 109 | 30 | 9 | 130 | 349 | 332 | -4.9% |
| Mar. | Chief Judge Bucki | 99 | 25 | 0 | 0 | 124 | 314 | 29 | 1 | 7 | 23 | 99 | 155 | 56.6% |
| | Judge Kaplan | 96 | 38 | 0 | 0 | 134 | 318 | 58 | 1 | 27 | 32 | 111 | 159 | 43.2% |
| | Judge Warren | 109 | 36 | 0 | 0 | 145 | 340 | 43 | 2 | 1 | 44 | 120 | 201 | 67.5% |
| | Buffalo Total | 195 | 63 | 0 | 0 | 258 | 632 | 87 | 2 | 34 | 55 | 210 | 314 | 49.5% |
| | Rochester Total | 109 | 36 | 0 | 0 | 145 | 340 | 43 | 2 | 1 | 44 | 120 | 201 | 67.5% |
| | WDNY Total | 304 | 99 | 0 | 0 | 403 | 972 | 130 | 4 | 35 | 99 | 330 | 515 | 56.1% |
| Apr. | Chief Judge Bucki | 85 | 44 | 2 | 0 | 131 | 445 | 23 | 1 | 3 | 21 | 106 | 121 | 14.2% |
| | Judge Kaplan | 92 | 30 | 8 | 1 | 131 | 449 | 32 | 1 | 6 | 27 | 109 | 92 | -15.6% |
| | Judge Warren | 110 | 33 | 0 | 0 | 143 | 483 | 44 | 0 | 2 | 42 | 90 | 81 | -10.0% |
| | Buffalo Total | 177 | 74 | 10 | 1 | 262 | 894 | 55 | 2 | 9 | 48 | 215 | 213 | -0.9% |
| | Rochester Total | 110 | 33 | 0 | 0 | 143 | 483 | 44 | 0 | 2 | 42 | 90 | 81 | -10.0% |
| | WDNY Total | 287 | 107 | 10 | 1 | 405 | 1,377 | 99 | 2 | 11 | 90 | 305 | 294 | -3.6% |
| May | Chief Judge Bucki | 100 | 29 | 0 | 0 | 129 | 574 | 21 | 1 | 3 | 19 | 127 | 128 | 0.8% |
| | Judge Kaplan | 79 | 26 | 2 | 0 | 107 | 556 | 27 | 1 | 2 | 26 | 125 | 95 | -24.0% |
| | Judge Warren | 80 | 34 | 0 | 1 | 115 | 598 | 42 | 2 | 7 | 37 | 75 | 164 | 118.7% |
| | Buffalo Total | 179 | 55 | 2 | 0 | 236 | 1,130 | 48 | 2 | 5 | 45 | 252 | 223 | -11.5% |
| | Rochester Total | 80 | 34 | 0 | 1 | 115 | 598 | 42 | 2 | 7 | 37 | 75 | 164 | 118.7% |
| | WDNY Total | 259 | 89 | 2 | 1 | 351 | 1,728 | 90 | 4 | 12 | 82 | 327 | 387 | 18.3% |

| | | Chapter 7 | Chapter 13 | Chapter 11 | Chapter 12/15 | Cases Filed by Month | Cases Filed YTD | Adversary Cases | | | | Case Closings | | |
|------|-------------------|------------|------------|------------|---------------|----------------------|-----------------|---------------------|-----------|----------------------|-------------|-------------------|-------------------|---------------|
| | | | | | | | | Pending Prior Month | New | Closed Current Month | Net Pending | Cases Closed 2017 | Cases Closed 2018 | % change |
| June | Chief Judge Bucki | 57 | 23 | 2 | 1 | 83 | 657 | 19 | 4 | 2 | 21 | 125 | 105 | -16.0% |
| | Judge Kaplan | 85 | 48 | 1 | 0 | 134 | 690 | 26 | 1 | 7 | 20 | 113 | 113 | 0.0% |
| | Judge Warren | 95 | 27 | 0 | 0 | 122 | 720 | 37 | 1 | 6 | 32 | 247 | 142 | -42.5% |
| | Buffalo Total | 142 | 71 | 3 | 1 | 217 | 1,347 | 45 | 5 | 9 | 41 | 238 | 218 | -8.4% |
| | Rochester Total | 95 | 27 | 0 | 0 | 122 | 720 | 37 | 1 | 6 | 32 | 247 | 142 | -42.5% |
| | WDNY Total | 237 | 98 | 3 | 1 | 339 | 2,067 | 82 | 6 | 15 | 73 | 485 | 360 | -25.8% |
| July | Chief Judge Bucki | 91 | 32 | 3 | 0 | 126 | 783 | 21 | 9 | 0 | 30 | 108 | 137 | 26.9% |
| | Judge Kaplan | 60 | 25 | 1 | 0 | 86 | 776 | 20 | 0 | 2 | 18 | 126 | 129 | 2.4% |
| | Judge Warren | 74 | 28 | 1 | 0 | 103 | 823 | 32 | 2 | 4 | 30 | 88 | 151 | 71.6% |
| | Buffalo Total | 151 | 57 | 4 | 0 | 212 | 1,559 | 41 | 9 | 2 | 48 | 234 | 266 | 13.7% |
| | Rochester Total | 74 | 28 | 1 | 0 | 103 | 823 | 32 | 2 | 4 | 30 | 88 | 151 | 71.6% |
| | WDNY Total | 225 | 85 | 5 | 0 | 315 | 2,382 | 73 | 11 | 6 | 78 | 322 | 417 | 29.5% |
| Aug. | Chief Judge Bucki | 67 | 41 | 0 | 0 | 108 | 891 | 30 | 3 | 0 | 33 | 183 | 146 | -20.2% |
| | Judge Kaplan | 83 | 31 | 1 | 0 | 115 | 891 | 18 | 4 | 1 | 21 | 142 | 143 | 0.7% |
| | Judge Warren | 81 | 42 | 1 | 1 | 125 | 948 | 30 | 0 | 12 | 18 | 144 | 157 | 9.0% |
| | Buffalo Total | 150 | 72 | 1 | 0 | 223 | 1,782 | 48 | 7 | 1 | 54 | 325 | 289 | -11.1% |
| | Rochester Total | 81 | 42 | 1 | 1 | 125 | 948 | 30 | 0 | 12 | 18 | 144 | 157 | 9.0% |
| | WDNY Total | 231 | 114 | 2 | 1 | 348 | 2,730 | 78 | 7 | 13 | 72 | 469 | 446 | -4.9% |
| Sep. | Chief Judge Bucki | 76 | 61 | 3 | 0 | 140 | 1,031 | 33 | 2 | 3 | 32 | 181 | 122 | -32.6% |
| | Judge Kaplan | 86 | 71 | 1 | 0 | 158 | 1,049 | 21 | 0 | 4 | 17 | 167 | 113 | -32.3% |
| | Judge Warren | 74 | 30 | 0 | 0 | 104 | 1,052 | 18 | 0 | 3 | 15 | 177 | 121 | -31.6% |
| | Buffalo Total | 162 | 132 | 4 | 0 | 298 | 2,080 | 54 | 2 | 7 | 49 | 348 | 235 | -32.5% |
| | Rochester Total | 74 | 30 | 0 | 0 | 104 | 1,052 | 18 | 0 | 3 | 15 | 177 | 121 | -31.6% |
| | WDNY Total | 236 | 162 | 4 | 0 | 402 | 3,132 | 72 | 2 | 10 | 64 | 525 | 356 | -32.2% |

U.S. Bankruptcy Court - Western District of New York

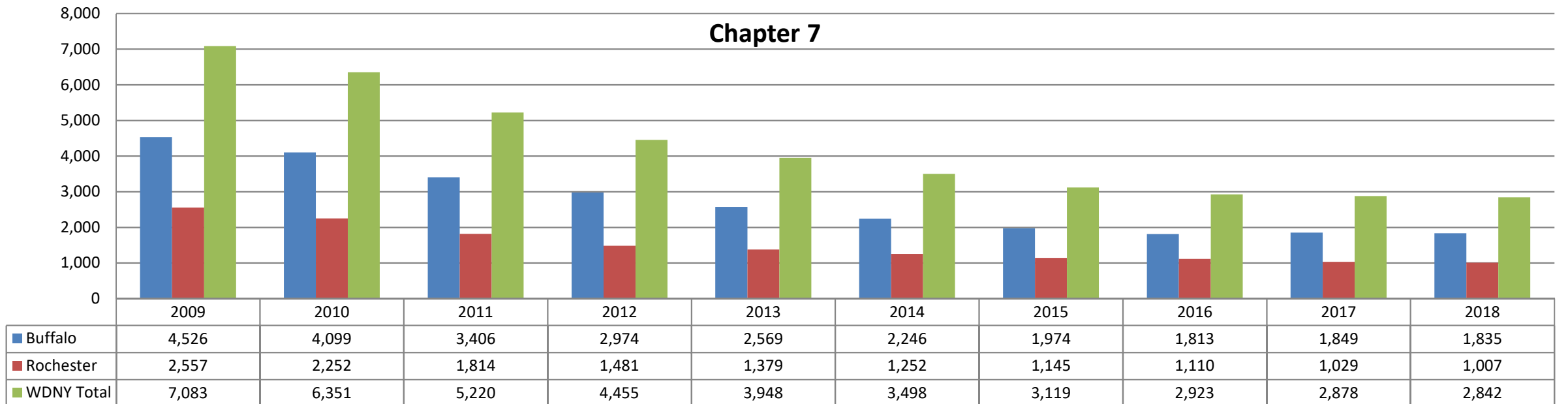
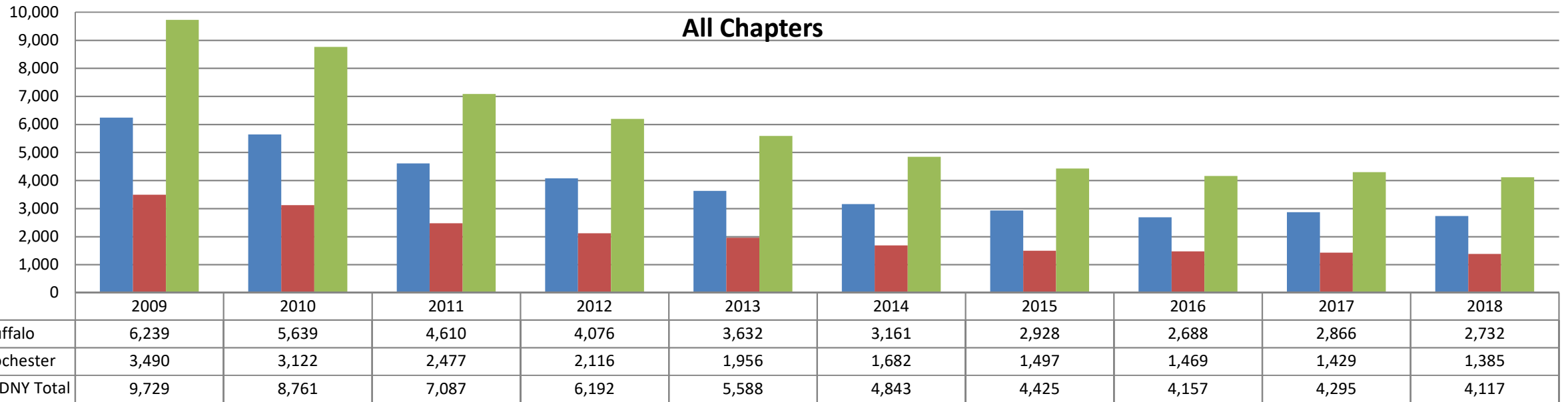
Caseload by Judge, Division & District

Month Ending December 31, 2018

Report #4

Page 3 of 3

| | | Chapter 7 | Chapter 13 | Chapter 11 | Chapter 12/15 | Cases Filed by Month | Cases Filed YTD | Adversary Cases | | | | Case Closings | | |
|------------------------|-------------------|--------------|------------|-----------------|-------------------------|----------------------|-----------------|---------------------|-------------------|----------------------|-------------|-------------------|-------------------|----------|
| | | | | | | | | Pending Prior Month | New | Closed Current Month | Net Pending | Cases Closed 2017 | Cases Closed 2018 | % change |
| Oct. | Chief Judge Bucki | 92 | 72 | 1 | 0 | 165 | 1,196 | 32 | 2 | 1 | 33 | 125 | 111 | -11.2% |
| | Judge Kaplan | 103 | 56 | 3 | 0 | 162 | 1,211 | 17 | 0 | 0 | 17 | 126 | 128 | 1.6% |
| | Judge Warren | 83 | 31 | 2 | 0 | 116 | 1,168 | 15 | 0 | 2 | 13 | 113 | 152 | 34.5% |
| | Buffalo Total | 195 | 128 | 4 | 0 | 327 | 2,407 | 49 | 2 | 1 | 50 | 251 | 239 | -4.8% |
| | Rochester Total | 83 | 31 | 2 | 0 | 116 | 1,168 | 15 | 0 | 2 | 13 | 113 | 152 | 34.5% |
| | WDNY Total | 278 | 159 | 6 | 0 | 443 | 3,575 | 64 | 2 | 3 | 63 | 364 | 391 | 7.4% |
| Nov. | Chief Judge Bucki | 83 | 35 | 3 | 0 | 121 | 1,317 | 33 | 1 | 1 | 33 | 116 | 144 | 24.1% |
| | Judge Kaplan | 44 | 16 | 0 | 0 | 60 | 1,271 | 17 | 1 | 2 | 16 | 113 | 118 | 4.4% |
| | Judge Warren | 90 | 30 | 1 | 0 | 121 | 1,289 | 13 | 1 | 0 | 14 | 162 | 81 | -50.0% |
| | Buffalo Total | 127 | 51 | 3 | 0 | 181 | 2,588 | 50 | 2 | 3 | 49 | 229 | 262 | 14.4% |
| | Rochester Total | 90 | 30 | 1 | 0 | 121 | 1,289 | 13 | 1 | 0 | 14 | 162 | 81 | -50.0% |
| | WDNY Total | 217 | 81 | 4 | 0 | 302 | 3,877 | 63 | 3 | 3 | 63 | 391 | 343 | -12.3% |
| Dec. | Chief Judge Bucki | 46 | 9 | 1 | 0 | 56 | 1,373 | 33 | 0 | 2 | 31 | 122 | 73 | -40.2% |
| | Judge Kaplan | 65 | 23 | 0 | 0 | 88 | 1,359 | 16 | 0 | 2 | 14 | 143 | 94 | -34.3% |
| | Judge Warren | 75 | 20 | 1 | 0 | 96 | 1,385 | 14 | 0 | 0 | 14 | 158 | 133 | -15.8% |
| | Buffalo Total | 111 | 32 | 1 | 0 | 144 | 2,732 | 49 | 0 | 4 | 45 | 265 | 167 | -37.0% |
| | Rochester Total | 75 | 20 | 1 | 0 | 96 | 1,385 | 14 | 0 | 0 | 14 | 158 | 133 | -15.8% |
| | WDNY Total | 186 | 52 | 2 | 0 | 240 | 4,117 | 63 | 0 | 4 | 59 | 423 | 300 | -29.1% |
| Year to Date | Chapter 7 | Chapter 13 | Chapter 11 | Chapter 12 & 15 | YTD Totals All Chapters | Adversary Cases YTD | | | | Case Closings YTD | | | | |
| | | | | | | New | Closed | Net Pending | Cases Closed 2017 | Cases Closed 2018 | % change | | | |
| Chief Judge Bucki YTD | 918 | 438 | 15 | 2 | 1,373 | 25 | 26 | 31 | 1,548 | 1,459 | -5.7% | | | |
| Judge Kaplan YTD | 917 | 424 | 17 | 1 | 1,359 | 14 | 96 | 14 | 1,510 | 1,408 | -6.8% | | | |
| Judge Warren YTD | 1,007 | 365 | 11 | 2 | 1,385 | 44 | 40 | 14 | 1,623 | 1,655 | 2.0% | | | |
| Buffalo Total YTD | 1,835 | 862 | 32 | 3 | 2,732 | 39 | 122 | 45 | 3,058 | 2,867 | -6.2% | | | |
| Rochester Total YTD | 1,007 | 365 | 11 | 2 | 1,385 | 44 | 40 | 14 | 1,623 | 1,655 | 2.0% | | | |
| WDNY Totals YTD | 2,842 | 1,227 | 43 | 5 | 4,117 | 83 | 162 | 59 | 4,681 | 4,522 | -3.4% | | | |

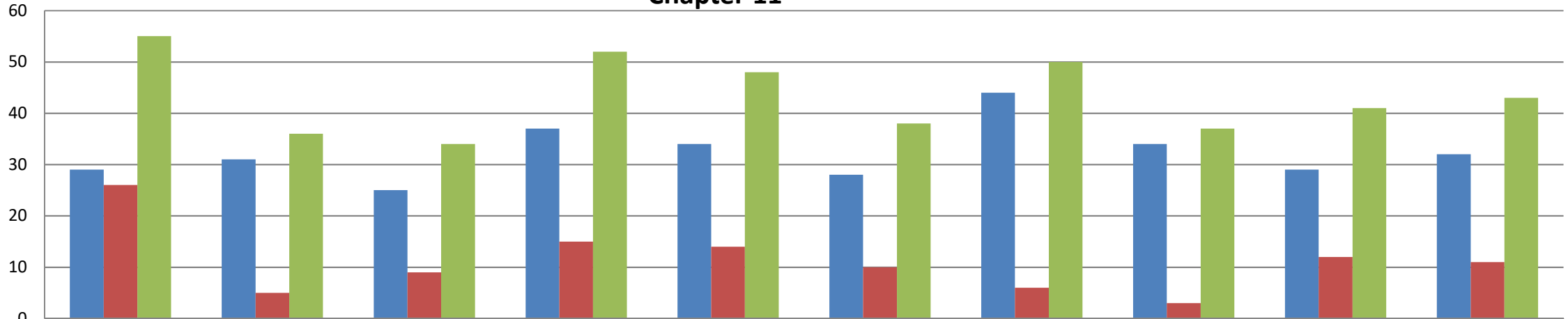


Chapter 13 (includes Chapter 12 & 15)



| | 2009 | 2010 | 2011 | 2012 | 2013 | 2014 | 2015 | 2016 | 2017 | 2018 |
|-------------|-------|-------|-------|-------|-------|-------|-------|-------|-------|-------|
| Buffalo | 1,684 | 1,509 | 1,179 | 1,065 | 1,029 | 887 | 909 | 841 | 988 | 865 |
| Rochester | 907 | 865 | 654 | 620 | 563 | 420 | 347 | 356 | 388 | 367 |
| WDNY Totals | 2,591 | 2,374 | 1,833 | 1,685 | 1,592 | 1,307 | 1,256 | 1,197 | 1,376 | 1,232 |

Chapter 11



| | 2009 | 2010 | 2011 | 2012 | 2013 | 2014 | 2015 | 2016 | 2017 | 2018 |
|-------------|------|------|------|------|------|------|------|------|------|------|
| Buffalo | 29 | 31 | 25 | 37 | 34 | 28 | 44 | 34 | 29 | 32 |
| Rochester | 26 | 5 | 9 | 15 | 14 | 10 | 6 | 3 | 12 | 11 |
| WDNY Totals | 55 | 36 | 34 | 52 | 48 | 38 | 50 | 37 | 41 | 43 |