

Month Ending December 31, 2022

		Cases Filed 2021	Cases Filed 2022	% change same month	% change YTD	Chapter 7				Chapter 13				Chapter 11	Ch 12 & 15
						<sup>1</sup> Non-Bus.	<sup>2</sup> Business	<sup>3</sup> Other	Total Ch. 7	<sup>1</sup> Non-Bus.	<sup>2</sup> Business	<sup>3</sup> Other	Total Ch.13		
Jan.	Buffalo	92	82	-10.9%	-10.9%	58	1	0	59	22	0	0	22	1	0
	Rochester	51	45	-11.8%	-11.8%	30	1	0	31	11	0	0	11	3	0
	WDNY Total Month	143	127	-11.2%	-11.2%	88	2	0	90	33	0	0	33	4	0
	WDNY Total YTD	143	127			88	2	0	90	33	0	0	33	4	0
Feb.	Buffalo	102	93	-8.8%	-9.8%	61	3	0	64	27	0	0	27	2	0
	Rochester	76	48	-36.8%	-26.8%	32	0	0	32	16	0	0	16	0	0
	WDNY Total Month	178	141	-20.8%	-16.5%	93	3	0	96	43	0	0	43	2	0
	WDNY Total YTD	321	268			181	5	0	186	76	0	0	76	6	0
Mar.	Buffalo	151	132	-12.6%	-11.0%	101	1	0	102	29	0	0	29	1	0
	Rochester	72	65	-9.7%	-20.6%	47	1	0	48	14	1	0	15	2	0
	WDNY Total Month	223	197	-11.7%	-14.5%	148	2	0	150	43	1	0	44	3	0
	WDNY Total YTD	544	465			329	7	0	336	119	1	0	120	9	0
Apr.	Buffalo	135	119	-11.9%	-11.3%	79	4	1	84	35	0	0	35	0	0
	Rochester	78	61	-21.8%	-20.9%	39	0	1	40	16	3	1	20	1	0
	WDNY Total Month	213	180	-15.5%	-14.8%	118	4	2	124	51	3	1	55	1	0
	WDNY Total YTD	757	645			447	11	2	460	170	4	1	175	10	0
May	Buffalo	126	104	-17.5%	-12.5%	68	2	0	70	33	1	0	34	0	0
	Rochester	69	60	-13.0%	-19.4%	40	2	1	43	10	0	1	11	6	0
	WDNY Total Month	195	164	-15.9%	-15.0%	108	4	1	113	43	1	1	45	6	0
	WDNY Total YTD	952	809			555	15	3	573	213	5	2	220	16	0
June	Buffalo	115	116	0.9%	-10.4%	79	2	0	81	35	0	0	35	0	0
	Rochester	68	48	-29.4%	-21.0%	32	1	0	33	14	0	1	15	0	0
	WDNY Total Month	183	164	-10.4%	-14.3%	111	3	0	114	49	0	1	50	0	0
	WDNY Total YTD	1,135	973			666	18	3	687	262	5	3	270	16	0
July	Buffalo	132	93	-29.5%	-13.4%	64	3	0	67	25	0	0	25	1	0
	Rochester	68	48	-29.4%	-22.2%	34	1	0	35	13	0	0	13	0	0
	WDNY Total Month	200	141	-29.5%	-16.6%	98	4	0	102	38	0	0	38	1	0
	WDNY Total YTD	1,335	1,114			764	22	3	789	300	5	3	308	17	0

<sup>1</sup> Primary "Nature of Debt" is consumer debt.

<sup>2</sup> Primary "Nature of Debt" is business debt.

<sup>3</sup> Primary "Nature of Debt" is other.

		Cases Filed 2021	Cases Filed 2022	% change same month	% change YTD	Chapter 7				Chapter 13				Chapter 11	Ch. 12 & 15
						<sup>1</sup> Non-Bus.	<sup>2</sup> Business	<sup>3</sup> Other	Total Ch. 7	<sup>1</sup> Non-Bus.	<sup>2</sup> Business	<sup>3</sup> Other	Total Ch.13		
Aug.	Buffalo	114	78	-31.6%	-15.5%	54	1	0	55	22	1	0	23	0	0
	Rochester	59	48	-18.6%	-21.8%	36	0	0	36	10	1	0	11	1	0
	WDNY Total Month	173	126	-27.2%	-17.8%	90	1	0	91	32	2	0	34	1	0
	WDNY Total YTD	1,508	1,240			854	23	3	880	332	7	3	342	18	0
Sep.	Buffalo	106	110	3.8%	-13.6%	64	1	0	65	42	1	0	43	2	0
	Rochester	58	60	3.4%	-19.4%	35	2	1	38	22	0	0	22	0	0
	WDNY Total Month	164	170	3.7%	-15.7%	99	3	1	103	64	1	0	65	2	0
	WDNY Total YTD	1,672	1,410			953	26	4	983	396	8	3	407	20	0
Oct.	Buffalo	86	150	74.4%	-7.1%	70	3	0	73	68	2	0	70	7	0
	Rochester	38	59	55.3%	-14.9%	38	1	0	39	19	1	0	20	0	0
	WDNY Total Month	124	209	68.5%	-9.9%	108	4	0	112	87	3	0	90	7	0
	WDNY Total YTD	1,796	1,619			1,061	30	4	1,095	483	11	3	497	27	0
Nov.	Buffalo	89	88	-1.1%	-6.7%	51	3	0	54	33	0	0	33	1	0
	Rochester	45	56	24.4%	-12.3%	26	1	0	27	27	2	0	29	0	0
	WDNY Total Month	134	144	7.5%	-8.7%	77	4	0	81	60	2	0	62	1	0
	WDNY Total YTD	1,930	1,763			1,138	34	4	1,176	543	13	3	559	28	0
Dec.	Buffalo	69	85	23.2%	-5.1%	63	1	0	64	21	0	0	21	0	0
	Rochester	46	55	19.6%	-10.3%	33	1	0	34	18	2	0	20	1	0
	WDNY Total Month	115	140	21.7%	-6.9%	96	2	0	98	39	2	0	41	1	0
	WDNY Total YTD	2,045	1,903			1,234	36	4	1,274	582	15	3	600	29	0
<b>Year to Date</b>		Cases Filed 2021	Cases Filed 2022	% change		Chapter 7 YTD				Chapter 13 YTD				Chapter 11 YTD	Chapter 12 & 15 YTD
Buffalo YTD		1,317	1,250	-5.1%		812	25	1	838	392	5	0	397	15	0
Rochester YTD		728	653	-10.3%		422	11	3	436	190	10	3	203	14	0
<b>WDNY YTD</b>		<b>2,045</b>	<b>1,903</b>	<b>-6.9%</b>		<b>1,234</b>	<b>36</b>	<b>4</b>	<b>1,274</b>	<b>582</b>	<b>15</b>	<b>3</b>	<b>600</b>	<b>29</b>	<b>0</b>

<sup>1</sup> Primary "Nature of Debt" is consumer debt.

<sup>2</sup> Primary "Nature of Debt" is business debt.

<sup>3</sup> Primary "Nature of Debt" is other.

U.S. Bankruptcy Court - Western District of New York

Case Filings by County

Month Ending December 31, 2022

Report # 2

Page 1 of 1

Counties in Buffalo Division	Jan.	Feb.	March	April	May	June	July	Aug.	Sept.	Oct.	Nov.	Dec.	County Totals 2022 YTD	% chg from 2021 YTD
(Olean) Allegany	1	1	2	2	1	4	2	2	2	6	0	1	24	26.3%
(Olean) Cattaraugus	2	4	4	3	4	2	6	6	1	6	4	5	47	-19.0%
Chautauqua	8	7	9	10	14	2	9	6	13	10	3	6	97	-16.4%
Erie	48	50	81	74	61	72	52	43	79	105	52	47	764	-6.5%
(Batavia) Genesee	2	9	3	7	2	1	2	1	1	5	0	0	33	-32.7%
Niagara	16	15	27	17	15	27	17	13	9	14	23	22	215	4.4%
(Batavia) Orleans	3	3	5	2	3	6	1	4	1	2	4	2	36	16.1%
(Batavia) Wyoming	2	4	1	4	4	2	4	3	4	2	2	2	34	70.0%
Out of County	0	0	0	0	0	0	0	0	0	0	0	0	0	
<b>2022 Totals</b>	<b>82</b>	<b>93</b>	<b>132</b>	<b>119</b>	<b>104</b>	<b>116</b>	<b>93</b>	<b>78</b>	<b>110</b>	<b>150</b>	<b>88</b>	<b>85</b>	<b>1,250</b>	<b>-5.1%</b>

Counties in Rochester Division	Jan.	Feb.	March	April	May	June	July	Aug.	Sept.	Oct.	Nov.	Dec.	County Totals 2022 YTD	% chg from 2021 YTD
(WG) Chemung	3	4	4	3	3	5	2	3	4	2	2	3	38	-7.3%
Livingston	1	1	2	2	5	4	3	2	1	3	0	5	29	31.8%
Monroe	32	33	38	32	38	20	30	32	41	35	39	26	396	-11.0%
Ontario	3	7	6	8	3	7	3	2	3	7	4	6	59	-26.3%
(WG) Schuyler	0	0	0	1	1	0	1	0	0	1	0	2	6	-33.3%
Seneca	1	0	1	1	0	3	2	3	3	0	1	0	15	-31.8%
(WG) Steuben	3	0	7	4	3	7	3	5	6	4	3	4	49	11.4%
Wayne	1	0	7	8	6	2	3	1	2	7	6	8	51	-3.8%
Yates	1	3	0	2	1	0	1	0	0	0	1	1	10	-16.7%
Out of County	0	0	0	0	0	0	0	0	0	0	0	0	0	
<b>2022 Totals</b>	<b>45</b>	<b>48</b>	<b>65</b>	<b>61</b>	<b>60</b>	<b>48</b>	<b>48</b>	<b>48</b>	<b>60</b>	<b>59</b>	<b>56</b>	<b>55</b>	<b>653</b>	<b>-10.3%</b>

<b>WDNY Combined Totals</b>	<b>127</b>	<b>141</b>	<b>197</b>	<b>180</b>	<b>164</b>	<b>164</b>	<b>141</b>	<b>126</b>	<b>170</b>	<b>209</b>	<b>144</b>	<b>140</b>	<b>1,903</b>	<b>-6.9%</b>
-----------------------------	------------	------------	------------	------------	------------	------------	------------	------------	------------	------------	------------	------------	--------------	--------------

U.S. Bankruptcy Court - Western District of New York

Historical Case Filing Report (All Chapters)

Month Ending December 31, 2022

Report #3

Page 1 of 2

		2013	% Change	2014	% Change	2015	% Change	2016	% Change	2017	% Change	2018	% Change	2019	% Change	2020	% Change	2021	% Change	2022
Jan.	Buffalo	252	-4.0%	242	-22.7%	188	-2.1%	184	11.4%	205	-8.3%	188	-8.5%	172	8.7%	187	-50.8%	92	-10.9%	82
	Rochester	179	-25.1%	134	-1.5%	131	-16.8%	109	-19.3%	88	13.6%	100	-2.0%	98	0.0%	98	-48.0%	51	-11.8%	45
	WDNY Total Month	431	-12.8%	376	-15.2%	319	-8.2%	293	0.0%	293	-1.7%	288	-6.3%	270	5.6%	285	-49.8%	143	-11.2%	127
	<b>WDNY Total YTD</b>	<b>431</b>	<b>-12.8%</b>	<b>376</b>	<b>-15.2%</b>	<b>319</b>	<b>-8.2%</b>	<b>293</b>	<b>0.0%</b>	<b>293</b>	<b>-1.7%</b>	<b>288</b>	<b>-6.3%</b>	<b>270</b>	<b>5.6%</b>	<b>285</b>	<b>-49.8%</b>	<b>143</b>	<b>-11.2%</b>	<b>127</b>
Feb.	Buffalo	273	-15.4%	231	-20.3%	184	15.2%	212	-11.8%	187	-0.5%	186	9.1%	203	-23.6%	155	-34.2%	102	-8.8%	93
	Rochester	148	-29.7%	104	-28.8%	74	32.4%	98	8.2%	106	-10.4%	95	-8.4%	87	1.1%	88	-13.6%	76	-36.8%	48
	WDNY Total Month	421	-20.4%	335	-23.0%	258	20.2%	310	-5.5%	293	-4.1%	281	3.2%	290	-16.2%	243	-26.7%	178	-20.8%	141
	<b>WDNY Total YTD</b>	<b>852</b>	<b>-16.5%</b>	<b>711</b>	<b>-18.8%</b>	<b>577</b>	<b>4.5%</b>	<b>603</b>	<b>-2.8%</b>	<b>586</b>	<b>-2.9%</b>	<b>569</b>	<b>-1.6%</b>	<b>560</b>	<b>-5.7%</b>	<b>528</b>	<b>-39.2%</b>	<b>321</b>	<b>-16.5%</b>	<b>268</b>
Mar.	Buffalo	396	-20.7%	314	-4.5%	300	-15.0%	255	9.0%	278	-7.2%	258	6.6%	275	-21.8%	215	-29.8%	151	-12.6%	132
	Rochester	172	0.0%	172	-23.8%	131	13.7%	149	-2.7%	145	0.0%	145	-17.2%	120	-3.3%	116	-37.9%	72	-9.7%	65
	WDNY Total Month	568	-14.4%	486	-11.3%	431	-6.3%	404	4.7%	423	-4.7%	403	-2.0%	395	-16.2%	331	-32.6%	223	-11.7%	197
	<b>WDNY Total YTD</b>	<b>1,420</b>	<b>-15.7%</b>	<b>1,197</b>	<b>-15.8%</b>	<b>1,008</b>	<b>-0.1%</b>	<b>1,007</b>	<b>0.2%</b>	<b>1,009</b>	<b>-3.7%</b>	<b>972</b>	<b>-1.7%</b>	<b>955</b>	<b>-10.1%</b>	<b>859</b>	<b>-36.7%</b>	<b>544</b>	<b>-14.5%</b>	<b>465</b>
Apr.	Buffalo	331	-0.9%	328	-5.2%	311	-15.4%	263	-1.1%	260	0.8%	262	4.2%	273	-64.8%	96	40.6%	135	-11.9%	119
	Rochester	199	-19.1%	161	8.7%	175	-12.6%	153	-18.3%	125	14.4%	143	-2.8%	139	-60.4%	55	41.8%	78	-21.8%	61
	WDNY Total Month	530	-7.7%	489	-0.6%	486	-14.4%	416	-7.5%	385	5.2%	405	1.7%	412	-63.3%	151	41.1%	213	-15.5%	180
	<b>WDNY Total YTD</b>	<b>1,950</b>	<b>-13.5%</b>	<b>1,686</b>	<b>-11.4%</b>	<b>1,494</b>	<b>-4.8%</b>	<b>1,423</b>	<b>-2.0%</b>	<b>1,394</b>	<b>-1.2%</b>	<b>1,377</b>	<b>-0.7%</b>	<b>1,367</b>	<b>-26.1%</b>	<b>1,010</b>	<b>-25.0%</b>	<b>757</b>	<b>-14.8%</b>	<b>645</b>
May	Buffalo	337	-15.4%	285	0.7%	287	-15.3%	243	15.6%	281	-16.0%	236	11.9%	264	-53.0%	124	1.6%	126	-17.5%	104
	Rochester	205	-15.1%	174	-18.4%	142	3.5%	147	-1.4%	145	-20.7%	115	7.8%	124	-46.0%	67	3.0%	69	-13.0%	60
	WDNY Total Month	542	-15.3%	459	-6.5%	429	-9.1%	390	9.2%	426	-17.6%	351	10.5%	388	-50.8%	191	2.1%	195	-15.9%	164
	<b>WDNY Total YTD</b>	<b>2,492</b>	<b>-13.9%</b>	<b>2,145</b>	<b>-10.3%</b>	<b>1,923</b>	<b>-5.7%</b>	<b>1,813</b>	<b>0.4%</b>	<b>1,820</b>	<b>-5.1%</b>	<b>1,728</b>	<b>1.6%</b>	<b>1,755</b>	<b>-31.6%</b>	<b>1,201</b>	<b>-20.7%</b>	<b>952</b>	<b>-15.0%</b>	<b>809</b>
June	Buffalo	323	-15.5%	273	-12.5%	239	4.6%	250	-5.2%	237	-8.4%	217	-11.1%	193	-35.8%	124	-7.3%	115	0.9%	116
	Rochester	163	-22.7%	126	5.6%	133	3.8%	138	0.7%	139	-12.2%	122	-11.5%	108	-23.1%	83	-18.1%	68	-29.4%	48
	WDNY Total Month	486	-17.9%	399	-6.8%	372	4.3%	388	-3.1%	376	-9.8%	339	-11.2%	301	-31.2%	207	-11.6%	183	-10.4%	164
	<b>WDNY Total YTD</b>	<b>2,978</b>	<b>-14.6%</b>	<b>2,544</b>	<b>-9.8%</b>	<b>2,295</b>	<b>-4.1%</b>	<b>2,201</b>	<b>-0.2%</b>	<b>2,196</b>	<b>-5.9%</b>	<b>2,067</b>	<b>-0.5%</b>	<b>2,056</b>	<b>-31.5%</b>	<b>1,408</b>	<b>-19.4%</b>	<b>1,135</b>	<b>-14.3%</b>	<b>973</b>

U.S. Bankruptcy Court - Western District of New York  
 Historical Case Filing Report (All Chapters)  
 Month Ending December 31, 2022

		2013	% Change	2014	% Change	2015	% Change	2016	% Change	2017	% Change	2018	% Change	2019	% Change	2020	% Change	2021	% Change	2022
July	Buffalo	283	-17.3%	234	9.4%	257	-30.7%	178	34.8%	240	-11.7%	212	9.0%	231	-33.8%	153	-13.7%	132	-29.5%	93
	Rochester	193	-26.9%	141	-2.8%	137	-21.9%	107	5.6%	113	-8.8%	103	11.7%	115	-18.3%	94	-27.7%	68	-29.4%	48
	WDNY Total Month	476	-21.2%	375	4.8%	394	-27.7%	285	23.9%	353	-10.8%	315	9.8%	346	-28.6%	247	-19.0%	200	-29.5%	141
	WDNY Total YTD	3,454	-15.5%	2,919	-7.9%	2,689	-7.5%	2,486	2.5%	2,549	-6.6%	2,382	0.8%	2,402	-31.1%	1,655	-19.3%	1,335	-16.6%	1,114
Aug	Buffalo	304	-23.4%	233	-8.2%	214	9.8%	235	3.4%	243	-8.2%	223	-11.2%	198	-25.8%	147	-22.4%	114	-31.6%	78
	Rochester	142	-1.4%	140	-10.7%	126	-12.7%	110	10.0%	121	3.3%	125	-12.0%	110	-32.7%	74	-20.3%	59	-18.6%	48
	WDNY Total Month	446	-16.4%	373	-9.1%	340	1.5%	345	5.5%	364	-4.4%	348	-11.5%	308	-28.2%	221	-21.7%	173	-27.2%	126
	WDNY Total YTD	3,900	-15.6%	3,292	-8.0%	3,029	-6.5%	2,831	2.9%	2,913	-6.3%	2,730	-0.7%	2,710	-30.8%	1,876	-19.6%	1,508	-17.8%	1,240
Sep	Buffalo	290	-2.1%	284	0.0%	284	-18.3%	232	13.8%	264	12.9%	298	8.1%	322	-64.0%	116	-8.6%	106	3.8%	110
	Rochester	155	-12.9%	135	-20.0%	108	6.5%	115	1.7%	117	-11.1%	104	1.9%	106	-32.1%	72	-19.4%	58	3.4%	60
	WDNY Total Month	445	-5.8%	419	-6.4%	392	-11.5%	347	9.8%	381	5.5%	402	6.5%	428	-56.1%	188	-12.8%	164	3.7%	170
	WDNY Total YTD	4,345	-14.6%	3,711	-7.9%	3,421	-7.1%	3,178	3.7%	3,294	-4.9%	3,132	0.2%	3,138	-34.2%	2,064	-19.0%	1,672	-15.7%	1,410
Oct	Buffalo	391	-24.0%	297	-11.8%	262	18.7%	311	-13.5%	269	21.6%	327	-18.3%	267	-50.9%	131	-34.4%	86	74.4%	150
	Rochester	139	-12.9%	121	9.9%	133	-13.5%	115	3.5%	119	-2.5%	116	4.3%	121	-43.8%	68	-44.1%	38	55.3%	59
	WDNY Total Month	530	-21.1%	418	-5.5%	395	7.8%	426	-8.9%	388	14.2%	443	-12.4%	388	-48.7%	199	-37.7%	124	68.5%	209
	WDNY Total YTD	4,875	-15.3%	4,129	-7.6%	3,816	-5.6%	3,604	2.2%	3,682	-2.9%	3,575	-1.4%	3,526	-35.8%	2,263	-20.6%	1,796	-9.9%	1,619
Nov	Buffalo	236	-2.5%	230	-7.4%	213	-15.0%	181	20.4%	218	-17.0%	181	6.1%	192	-44.8%	106	-16.0%	89	-1.1%	88
	Rochester	134	-5.2%	127	0.0%	127	-1.6%	125	-4.0%	120	0.8%	121	-7.4%	112	-29.5%	79	-43.0%	45	24.4%	56
	WDNY Total Month	370	-3.5%	357	-4.8%	340	-10.0%	306	10.5%	338	-10.7%	302	0.7%	304	-39.1%	185	-27.6%	134	7.5%	144
	WDNY Total YTD	5,245	-14.5%	4,486	-7.4%	4,156	-5.9%	3,910	2.8%	4,020	-3.6%	3,877	-1.2%	3,830	-36.1%	2,448	-21.2%	1,930	-8.7%	1,763
Dec	Buffalo	216	-2.8%	210	-10.5%	189	-23.8%	144	27.8%	184	-21.7%	144	18.1%	170	-29.4%	120	-42.5%	69	23.2%	85
	Rochester	127	15.7%	147	-45.6%	80	28.8%	103	-11.7%	91	5.5%	96	-24.0%	73	-19.2%	59	-22.0%	46	19.6%	55
	WDNY Total Month	343	4.1%	357	-24.9%	269	-8.2%	247	11.3%	275	-12.7%	240	1.3%	243	-26.3%	179	-35.8%	115	21.7%	140
	WDNY Total YTD	5,588	-13.3%	4,843	-8.7%	4,425	-6.1%	4,157	3.3%	4,295	-4.1%	4,117	-1.1%	4,073	-35.5%	2,627	-22.2%	2,045	-6.9%	1,903
		<b>2013</b>	<b>% Change</b>	<b>2014</b>	<b>% Change</b>	<b>2015</b>	<b>% Change</b>	<b>2016</b>	<b>% Change</b>	<b>2017</b>	<b>% Change</b>	<b>2018</b>	<b>% Change</b>	<b>2019</b>	<b>% Change</b>	<b>2020</b>	<b>% Change</b>	<b>2021</b>	<b>% Change</b>	<b>2022</b>
	<b>Buffalo Total</b>	3,632	-13.0%	3,161	-7.4%	2,928	-8.2%	2,688	6.6%	2,866	-4.7%	2,732	1.0%	2,760	-39.3%	1,674	-21.3%	1,317	-5.1%	1,250
	<b>Rochester Total</b>	1,956	-14.0%	1,682	-11.0%	1,497	-1.9%	1,469	-2.7%	1,429	-3.1%	1,385	-5.2%	1,313	-27.4%	953	-23.6%	728	-10.3%	653
	<b>WDNY Total</b>	5,588	-13.3%	4,843	-8.6%	4,425	-6.1%	4,157	3.3%	4,295	-4.1%	4,117	-1.1%	4,073	-35.5%	2,627	-22.2%	2,045	-6.9%	1,903

		Chapter 7	Chapter 13	Chapter 11	Chapter 12/15	Cases Filed by Month	Cases Filed YTD	Adversary Cases				Case Closings		
								Pending Prior Month	New	Closed Current Month	Net Pending	Cases Closed 2021	Cases Closed 2022	% change
Jan.	Chief Judge Bucki	39	19	1	0	59	59	31	1	2	30	83	81	-2.4%
	Judge Kaplan	1	0	0	0	1	1	33	0	1	32	63	15	-76.2%
	Judge Warren(Buffalo)	19	3	0	0	22	22	0	0	0	0	15	49	226.7%
	Judge Warren(Rochester)	31	11	3	0	45	45	15	0	4	11	77	64	-16.9%
	Buffalo Total	59	22	1	0	82	82	64	1	3	62	161	145	-9.9%
	Rochester Total	31	11	3	0	45	45	15	0	4	11	77	64	-16.9%
	<b>WDNY Total</b>	<b>90</b>	<b>33</b>	<b>4</b>	<b>0</b>	<b>127</b>	<b>127</b>	<b>79</b>	<b>1</b>	<b>7</b>	<b>73</b>	<b>238</b>	<b>209</b>	<b>-12.2%</b>
Feb.	Chief Judge Bucki	42	19	2	0	63	122	30	2	6	26	70	86	22.9%
	Judge Kaplan	0	0	0	0	0	1	32	0	3	29	37	14	-62.2%
	Judge Warren(Buffalo)	22	8	0	0	30	52	0	0	0	0	6	14	133.3%
	Judge Warren(Rochester)	32	16	0	0	48	93	11	72	7	76	92	36	-60.9%
	Buffalo Total	64	27	2	0	93	175	62	2	9	55	113	114	0.9%
	Rochester Total	32	16	0	0	48	93	11	72	7	76	92	36	-60.9%
	<b>WDNY Total</b>	<b>96</b>	<b>43</b>	<b>2</b>	<b>0</b>	<b>141</b>	<b>268</b>	<b>73</b>	<b>74</b>	<b>16</b>	<b>131</b>	<b>205</b>	<b>150</b>	<b>-26.8%</b>
Mar.	Chief Judge Bucki	75	21	1	0	97	219	26	1	0	27	101	81	-19.8%
	Judge Kaplan	0	0	0	0	0	1	29	0	0	29	63	8	-87.3%
	Judge Warren(Buffalo)	27	8	0	0	35	87	0	1	0	1	3	26	766.7%
	Judge Warren(Rochester)	48	15	2	0	65	158	76	2	11	67	77	101	31.2%
	Buffalo Total	102	29	1	0	132	307	55	2	0	57	167	115	-31.1%
	Rochester Total	48	15	2	0	65	158	76	2	11	67	77	101	31.2%
	<b>WDNY Total</b>	<b>150</b>	<b>44</b>	<b>3</b>	<b>0</b>	<b>197</b>	<b>465</b>	<b>131</b>	<b>4</b>	<b>11</b>	<b>124</b>	<b>244</b>	<b>216</b>	<b>-11.5%</b>
Apr.	Chief Judge Bucki	63	26	0	0	89	308	27	2	4	25	105	93	-11.4%
	Judge Kaplan	0	0	0	0	0	1	29	0	0	29	76	2	-97.4%
	Judge Warren(Buffalo)	21	9	0	0	30	117	1	0	0	1	20	24	20.0%
	Judge Warren(Rochester)	40	20	1	0	61	219	67	1	13	55	82	74	-9.8%
	Buffalo Total	84	35	0	0	119	426	56	2	4	54	201	119	-40.8%
	Rochester Total	40	20	1	0	61	219	67	1	13	55	82	74	-9.8%
	<b>WDNY Total</b>	<b>124</b>	<b>55</b>	<b>1</b>	<b>0</b>	<b>180</b>	<b>645</b>	<b>123</b>	<b>3</b>	<b>17</b>	<b>109</b>	<b>283</b>	<b>193</b>	<b>-31.8%</b>



		Chapter 7	Chapter 13	Chapter 11	Chapter 12/15	Cases Filed by Month	Cases Filed YTD	Adversary Cases				Case Closings		
								Pending Prior Month	New	Closed Current Month	Net Pending	Cases Closed 2021	Cases Closed 2022	% change
May	Chief Judge Bucki	49	31	0	0	80	388	25	3	5	23	57	91	59.6%
	Judge Kaplan	0	0	0	0	0	1	29	0	3	26	34	1	-97.1%
	Judge Warren(Buffalo)	21	3	0	0	24	141	1	0	0	1	9	34	277.8%
	Judge Warren(Rochester)	43	11	6	0	60	279	55	2	6	51	59	42	-28.8%
	Buffalo Total	70	34	0	0	104	530	54	3	8	49	100	126	26.0%
	Rochester Total	43	11	6	0	60	279	55	2	6	51	59	42	-28.8%
	<b>WDNY Total</b>	<b>113</b>	<b>45</b>	<b>6</b>	<b>0</b>	<b>164</b>	<b>809</b>	<b>109</b>	<b>5</b>	<b>14</b>	<b>100</b>	<b>159</b>	<b>168</b>	5.7%
June	Chief Judge Bucki	57	23	0	0	80	468	23	1	1	23	115	57	-50.4%
	Judge Kaplan	0	0	0	0	0	1	26	0	2	24	69	1	-98.6%
	Judge Warren(Buffalo)	24	12	0	0	36	177	1	0	0	1	8	19	137.5%
	Judge Warren(Rochester)	33	15	0	0	48	327	51	1	7	45	105	63	-40.0%
	Buffalo Total	81	35	0	0	116	646	49	1	3	47	192	77	-59.9%
	Rochester Total	33	15	0	0	48	327	51	1	7	45	105	63	-40.0%
	<b>WDNY Total</b>	<b>114</b>	<b>50</b>	<b>0</b>	<b>0</b>	<b>164</b>	<b>973</b>	<b>100</b>	<b>2</b>	<b>10</b>	<b>92</b>	<b>297</b>	<b>140</b>	-52.9%
July	Chief Judge Bucki	46	22	1	0	69	537	23	0	4	19	105	100	-4.8%
	Judge Kaplan	0	0	0	0	0	1	24	0	1	23	43	3	-93.0%
	Judge Warren(Buffalo)	21	3	0	0	24	201	1	0	0	1	12	42	250.0%
	Judge Warren(Rochester)	35	13	0	0	48	375	45	0	8	37	86	83	-3.5%
	Buffalo Total	67	25	1	0	93	739	47	0	5	42	160	145	-9.4%
	Rochester Total	35	13	0	0	48	375	45	0	8	37	86	83	-3.5%
	<b>WDNY Total</b>	<b>102</b>	<b>38</b>	<b>1</b>	<b>0</b>	<b>141</b>	<b>1,114</b>	<b>92</b>	<b>0</b>	<b>13</b>	<b>79</b>	<b>246</b>	<b>228</b>	-7.3%
Aug.	Chief Judge Bucki	39	18	0	0	57	594	19	0	2	17	95	134	41.1%
	Judge Kaplan	0	0	0	0	0	1	23	0	3	20	55	4	-92.7%
	Judge Warren (Buffalo)	16	5	0	0	21	222	1	0	0	1	10	13	30.0%
	Judge Warren (Rochester)	36	11	1	0	48	423	37	3	4	36	81	73	-9.9%
	Buffalo Total	55	23	0	0	78	817	42	0	5	37	160	151	-5.6%
	Rochester Total	36	11	1	0	48	423	37	3	4	36	81	73	-9.9%
	<b>WDNY Total</b>	<b>91</b>	<b>34</b>	<b>1</b>	<b>0</b>	<b>126</b>	<b>1,240</b>	<b>79</b>	<b>3</b>	<b>9</b>	<b>73</b>	<b>241</b>	<b>224</b>	-7.1%

U.S. Bankruptcy Court - Western District of New York

Caseload by Judge, Division & District

Month Ending December 31, 2022

Report #4

Page 3 of 4

		Chapter 7	Chapter 13	Chapter 11	Chapter 12/15	Cases Filed by Month	Cases Filed YTD	Adversary Cases				Case Closings		
								Pending Prior Month	New	Closed Current Month	Net Pending	Cases Closed 2021	Cases Closed 2022	% change
Sep.	Chief Judge Bucki	55	38	2	0	95	689	17	0	2	15	92	54	-41.3%
	Judge Kaplan	0	0	0	0	0	1	20	0	1	19	37	2	-94.6%
	Judge Warren(Buffalo)	10	5	0	0	15	237	1	0	0	1	7	42	500.0%
	Judge Warren(Rochester)	38	22	0	0	60	483	36	2	4	34	70	57	-18.6%
	Buffalo Total	65	43	2	0	110	927	37	0	3	34	136	98	-27.9%
	Rochester Total	38	22	0	0	60	483	36	2	4	34	70	57	-18.6%
	<b>WDNY Total</b>	<b>103</b>	<b>65</b>	<b>2</b>	<b>0</b>	<b>170</b>	<b>1,410</b>	<b>73</b>	<b>2</b>	<b>7</b>	<b>68</b>	<b>206</b>	<b>155</b>	<b>-24.8%</b>
Oct.	Chief Judge Bucki	60	60	7	0	127	816	15	2	3	14	83	85	2.4%
	Judge Kaplan	0	0	0	0	0	1	19	0	1	18	18	0	-100.0%
	Judge Warren (Buffalo)	13	10	0	0	23	260	1	0	0	1	14	28	100.0%
	Judge Warren (Rochester)	39	20	0	0	59	542	34	0	4	30	90	66	-26.7%
	Buffalo Total	73	70	7	0	150	1,077	34	2	4	32	115	113	-1.7%
	Rochester Total	39	20	0	0	59	542	34	0	4	30	90	66	-26.7%
	<b>WDNY Total</b>	<b>112</b>	<b>90</b>	<b>7</b>	<b>0</b>	<b>209</b>	<b>1,619</b>	<b>68</b>	<b>2</b>	<b>8</b>	<b>62</b>	<b>205</b>	<b>179</b>	<b>-12.7%</b>
Nov.	Chief Judge Bucki	34	24	1	0	59	875	14	0	1	13	114	110	-3.5%
	Judge Kaplan	0	0	0	0	0	1	18	0	0	18	42	4	-90.5%
	Judge Warren (Buffalo)	20	9	0	0	29	289	1	0	0	1	29	26	-10.3%
	Judge Warren (Rochester)	27	29	0	0	56	598	30	0	6	24	82	101	23.2%
	Buffalo Total	54	33	1	0	88	1,165	32	0	1	31	185	140	-24.3%
	Rochester Total	27	29	0	0	56	598	30	0	6	24	82	101	23.2%
	<b>WDNY Total</b>	<b>81</b>	<b>62</b>	<b>1</b>	<b>0</b>	<b>144</b>	<b>1,763</b>	<b>62</b>	<b>0</b>	<b>7</b>	<b>55</b>	<b>267</b>	<b>241</b>	<b>-9.7%</b>
Dec.	Chief Judge Bucki	45	14	0	0	59	934	13	0	0	13	42	42	0.0%
	Judge Kaplan	0	0	0	0	0	1	18	0	0	18	3	0	-100.0%
	Judge Warren (Buffalo)	19	7	0	0	26	315	1	0	1	0	21	12	-42.9%
	Judge Warren (Rochester)	34	20	1	0	55	653	24	0	2	22	81	58	-28.4%
	Buffalo Total	64	21	0	0	85	1,250	31	0	0	31	66	54	-18.2%
	Rochester Total	34	20	1	0	55	653	24	0	2	22	81	58	-28.4%
	<b>WDNY Total</b>	<b>98</b>	<b>41</b>	<b>1</b>	<b>0</b>	<b>140</b>	<b>1,903</b>	<b>55</b>	<b>0</b>	<b>2</b>	<b>53</b>	<b>147</b>	<b>112</b>	<b>-23.8%</b>



U.S. Bankruptcy Court - Western District of New York

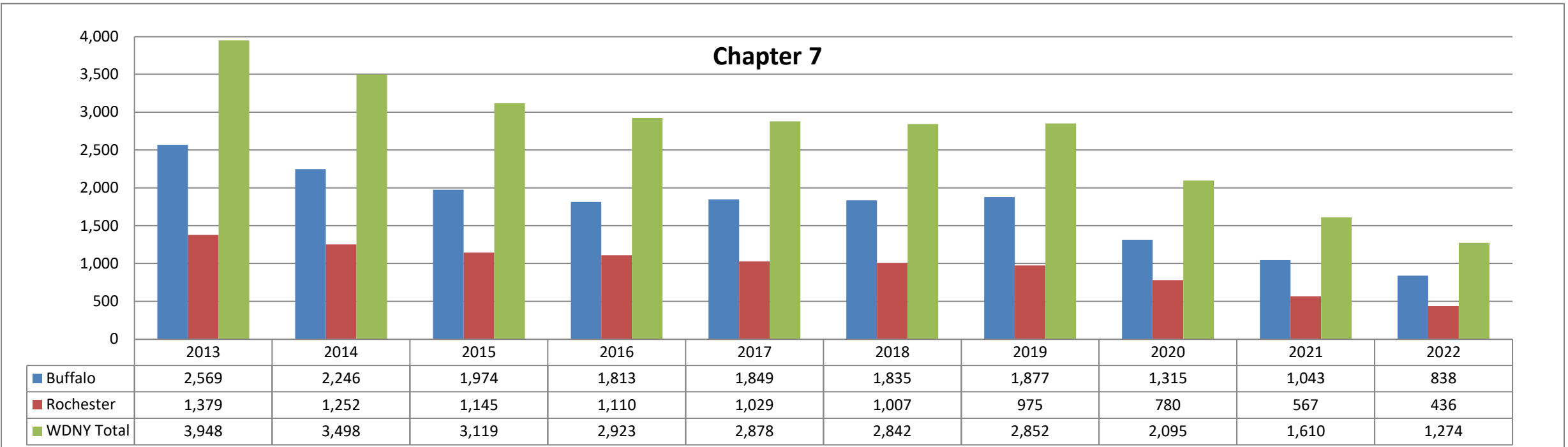
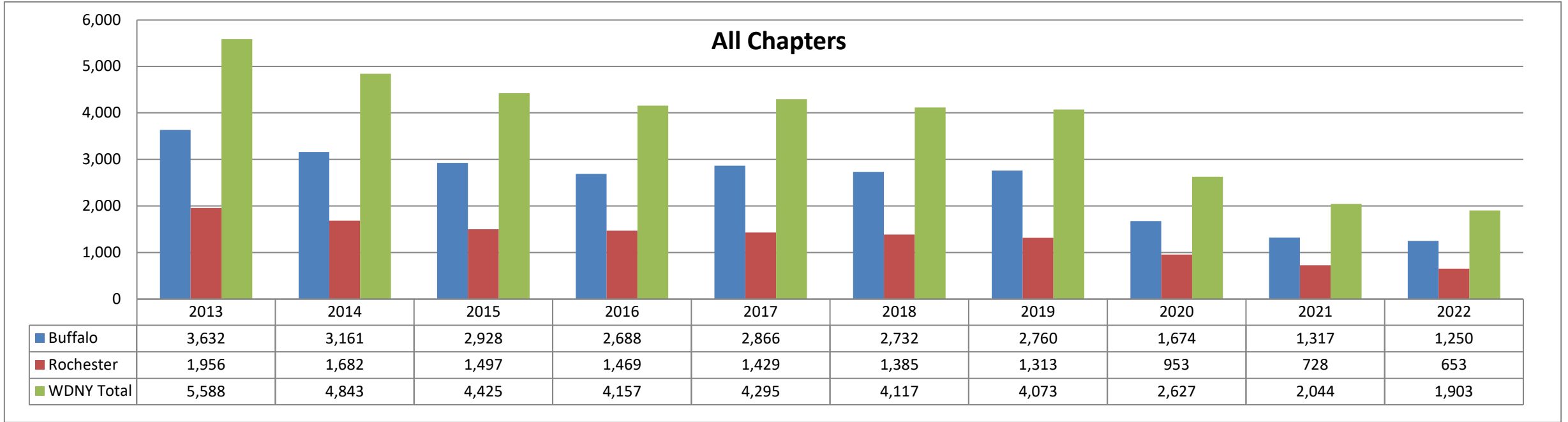
Caseload by Judge, Division & District

Month Ending December 31, 2022

Report # 4

Page 4 of 4

Year to Date	Chapter 7	Chapter 13	Chapter 11	Chapter 12 & 15	YTD Totals All Chapters	Adversary Cases YTD			Case Closings YTD		
						New	Closed	Net Pending	Cases Closed 2021	Cases Closed 2022	% change
Chief Judge Bucki YTD	604	315	15	0	934	12	30	13	1,062	1,014	-4.5%
Judge Kaplan YTD	1	0	0	0	1	0	15	18	540	54	-90.0%
Judge Warren (Buff & Roch) YTD	669	285	14	0	968	84	77	22	1,136	1,147	1.0%
Judge Warren (Buffalo) YTD	233	82	0	0	315	1	1	0	154	329	113.6%
Judge Warren (Rochester) YTD	436	203	14	0	653	83	76	22	982	818	-16.7%
<b>Buffalo Total YTD</b>	838	397	15	0	<b>1,250</b>	13	45	31	1,756	1,397	-20.4%
<b>Rochester Total YTD</b>	436	203	14	0	<b>653</b>	83	76	22	982	818	-16.7%
<b>WDNY Totals YTD</b>	<b>1,274</b>	<b>600</b>	<b>29</b>	<b>0</b>	<b>1,903</b>	<b>96</b>	<b>121</b>	<b>53</b>	<b>2,738</b>	<b>2,215</b>	<b>-19.1%</b>

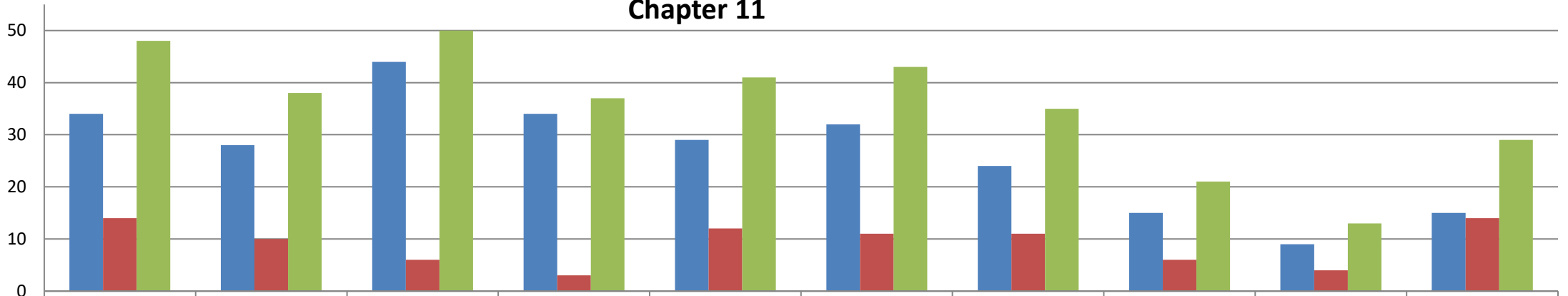


### Chapter 13 (includes Chapter 12 & 15)



	2013	2014	2015	2016	2017	2018	2019	2020	2021	2022
Buffalo	1,029	887	909	841	988	865	859	344	265	397
Rochester	563	420	347	356	388	367	327	167	157	203
WDNY Totals	1,592	1,307	1,256	1,197	1,376	1,232	1,186	511	422	600

### Chapter 11



	2013	2014	2015	2016	2017	2018	2019	2020	2021	2022
Buffalo	34	28	44	34	29	32	24	15	9	15
Rochester	14	10	6	3	12	11	11	6	4	14
WDNY Totals	48	38	50	37	41	43	35	21	13	29