

U.S. Bankruptcy Court - Western District of New York  
Case Filing Report

Report # 1  
Page 1 of 1

Month Ending February 28, 2023

		Cases Filed 2022	Cases Filed 2023	% change same month	% change YTD	Chapter 7				Chapter 13				Chapter 11	Ch 12 & 15
						<sup>1</sup> Non-Bus.	<sup>2</sup> Business	<sup>3</sup> Other	Total Ch. 7	<sup>1</sup> Non-Bus.	<sup>2</sup> Business	<sup>3</sup> Other	Total Ch.13		
Jan.	Buffalo	82	78	-4.9%	-4.9%	41	2	0	43	32	1	0	33	2	0
	Rochester	45	56	24.4%	24.4%	33	0	0	33	22	0	0	22	1	0
	WDNY Total Month	127	134	5.5%	5.5%	74	2	0	76	54	1	0	55	3	0
	WDNY Total YTD	127	134			74	2	0	76	54	1	0	55	3	0
Feb.	Buffalo	93	84	-9.7%	-7.4%	58	0	0	58	26	0	0	26	0	0
	Rochester	48	39	-18.8%	2.2%	23	0	0	23	14	0	1	15	1	0
	WDNY Total Month	141	123	-12.8%	-4.1%	81	0	0	81	40	0	1	41	1	0
	WDNY Total YTD	268	257			155	2	0	157	94	1	1	96	4	0
<b>Year to Date</b>		Cases Filed 2022	Cases Filed 2023	% change		Chapter 7 YTD				Chapter 13 YTD				Chapter 11 YTD	Chapter 12 & 15 YTD
						<sup>1</sup> Non-Bus.	<sup>2</sup> Business	<sup>3</sup> Other	Total Ch. 7	<sup>1</sup> Non-Bus.	<sup>2</sup> Business	<sup>3</sup> Other	Total Ch.13		
Buffalo YTD		175	162	-7.4%		99	2	0	101	58	1	0	59	2	0
Rochester YTD		93	95	2.2%		56	0	0	56	36	0	1	37	2	0
WDNY YTD		268	257	-4.1%		155	2	0	157	94	1	1	96	4	0

<sup>1</sup> Primary "Nature of Debt" is consumer debt.

<sup>2</sup> Primary "Nature of Debt" is business debt.

<sup>3</sup> Primary "Nature of Debt" is other.

U.S. Bankruptcy Court - Western District of New York

Case Filings by County

Month Ending February 28, 2023

Report # 2

Page 1 of 1

Counties in Buffalo Division	Jan.	Feb.	March	April	May	June	July	Aug.	Sept.	Oct.	Nov.	Dec.	County Totals 2023 YTD	% chg from 2022 YTD
(Olean) Allegany	1	3											4	100.0%
(Olean) Cattaraugus	1	4											5	-16.7%
Chautauqua	2	6											8	-46.7%
Erie	61	48											109	11.2%
(Batavia) Genesee	2	2											4	-63.6%
Niagara	9	15											24	-22.6%
(Batavia) Orleans	2	1											3	-50.0%
(Batavia) Wyoming	0	5											5	-16.7%
Out of County	0	0											0	
<b>2023 Totals</b>	<b>78</b>	<b>84</b>	<b>0</b>	<b>0</b>	<b>0</b>	<b>0</b>	<b>0</b>	<b>0</b>	<b>0</b>	<b>0</b>	<b>0</b>	<b>0</b>	<b>162</b>	<b>-7.4%</b>

Counties in Rochester Division	Jan.	Feb.	March	April	May	June	July	Aug.	Sept.	Oct.	Nov.	Dec.	County Totals 2023 YTD	% chg from 2022 YTD
(WG) Chemung	1	3											4	-42.9%
Livingston	2	0											2	0.0%
Monroe	42	28											70	7.7%
Ontario	2	3											5	-50.0%
(WG) Schuyler	1	0											1	n/a
Seneca	0	1											1	0.0%
(WG) Steuben	5	1											6	100.0%
Wayne	2	3											5	400.0%
Yates	1	0											1	-75.0%
Out of County	0	0											0	
<b>2023 Totals</b>	<b>56</b>	<b>39</b>	<b>0</b>	<b>0</b>	<b>0</b>	<b>0</b>	<b>0</b>	<b>0</b>	<b>0</b>	<b>0</b>	<b>0</b>	<b>0</b>	<b>95</b>	<b>2.2%</b>

<b>WDNY Combined Totals</b>	<b>134</b>	<b>123</b>	<b>0</b>	<b>0</b>	<b>0</b>	<b>0</b>	<b>0</b>	<b>0</b>	<b>0</b>	<b>0</b>	<b>0</b>	<b>0</b>	<b>257</b>	<b>-4.1%</b>
-----------------------------	------------	------------	----------	----------	----------	----------	----------	----------	----------	----------	----------	----------	------------	--------------

U.S. Bankruptcy Court - Western District of New York

Historical Case Filing Report (All Chapters)

Month Ending February 28, 2023

Report #3

Page 1 of 2

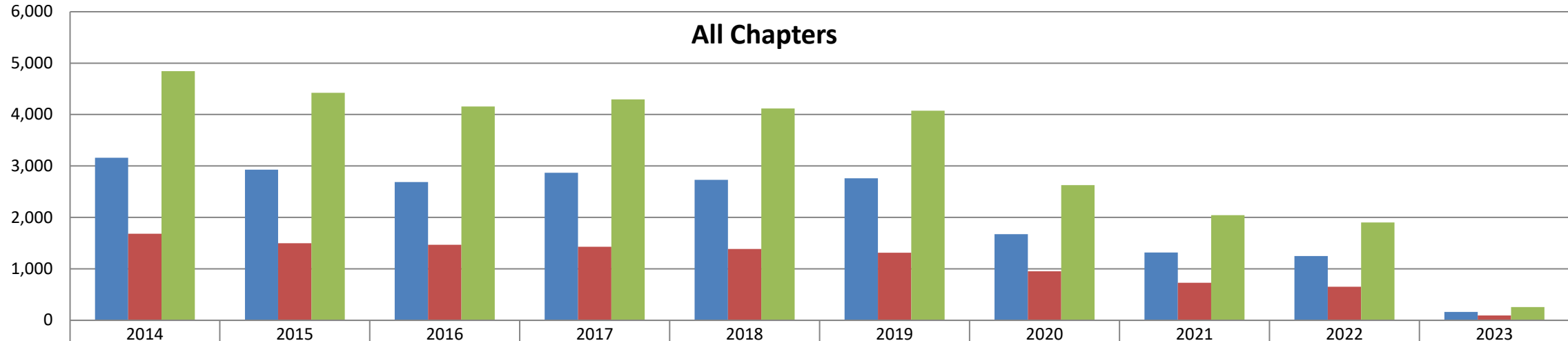
		2014	% Change	2015	% Change	2016	% Change	2017	% Change	2018	% Change	2019	% Change	2020	% Change	2021	% Change	2022	% Change	2023
Jan.	Buffalo	242	-22.7%	188	-2.1%	184	11.4%	205	-8.3%	188	-8.5%	172	8.7%	187	-50.8%	92	-10.9%	82	-4.9%	78
	Rochester	134	-1.5%	131	-16.8%	109	-19.3%	88	13.6%	100	-2.0%	98	0.0%	98	-48.0%	51	-11.8%	45	24.4%	56
	WDNY Total Month	376	-15.2%	319	-8.2%	293	0.0%	293	-1.7%	288	-6.3%	270	5.6%	285	-49.8%	143	-11.2%	127	5.5%	134
	<b>WDNY Total YTD</b>	<b>376</b>	<b>-15.2%</b>	<b>319</b>	<b>-8.2%</b>	<b>293</b>	<b>0.0%</b>	<b>293</b>	<b>-1.7%</b>	<b>288</b>	<b>-6.3%</b>	<b>270</b>	<b>5.6%</b>	<b>285</b>	<b>-49.8%</b>	<b>143</b>	<b>-11.2%</b>	<b>127</b>	<b>5.5%</b>	<b>134</b>
Feb.	Buffalo	231	-20.3%	184	15.2%	212	-11.8%	187	-0.5%	186	9.1%	203	-23.6%	155	-34.2%	102	-8.8%	93	-9.7%	84
	Rochester	104	-28.8%	74	32.4%	98	8.2%	106	-10.4%	95	-8.4%	87	1.1%	88	-13.6%	76	-36.8%	48	-18.8%	39
	WDNY Total Month	335	-23.0%	258	20.2%	310	-5.5%	293	-4.1%	281	3.2%	290	-16.2%	243	-26.7%	178	-20.8%	141	-12.8%	123
	<b>WDNY Total YTD</b>	<b>711</b>	<b>-18.8%</b>	<b>577</b>	<b>4.5%</b>	<b>603</b>	<b>-2.8%</b>	<b>586</b>	<b>-2.9%</b>	<b>569</b>	<b>-1.6%</b>	<b>560</b>	<b>-5.7%</b>	<b>528</b>	<b>-39.2%</b>	<b>321</b>	<b>-16.5%</b>	<b>268</b>	<b>-4.1%</b>	<b>257</b>
Mar.	Buffalo	314	-4.5%	300	-15.0%	255	9.0%	278	-7.2%	258	6.6%	275	-21.8%	215	-29.8%	151	-12.6%	132		
	Rochester	172	-23.8%	131	13.7%	149	-2.7%	145	0.0%	145	-17.2%	120	-3.3%	116	-37.9%	72	-9.7%	65		
	WDNY Total Month	486	-11.3%	431	-6.3%	404	4.7%	423	-4.7%	403	-2.0%	395	-16.2%	331	-32.6%	223	-11.7%	197		
	<b>WDNY Total YTD</b>	<b>1,197</b>	<b>-15.8%</b>	<b>1,008</b>	<b>-0.1%</b>	<b>1,007</b>	<b>0.2%</b>	<b>1,009</b>	<b>-3.7%</b>	<b>972</b>	<b>-1.7%</b>	<b>955</b>	<b>-10.1%</b>	<b>859</b>	<b>-36.7%</b>	<b>544</b>	<b>-14.5%</b>	<b>465</b>		
Apr.	Buffalo	328	-5.2%	311	-15.4%	263	-1.1%	260	0.8%	262	4.2%	273	-64.8%	96	40.6%	135	-11.9%	119		
	Rochester	161	8.7%	175	-12.6%	153	-18.3%	125	14.4%	143	-2.8%	139	-60.4%	55	41.8%	78	-21.8%	61		
	WDNY Total Month	489	-0.6%	486	-14.4%	416	-7.5%	385	5.2%	405	1.7%	412	-63.3%	151	41.1%	213	-15.5%	180		
	<b>WDNY Total YTD</b>	<b>1,686</b>	<b>-11.4%</b>	<b>1,494</b>	<b>-4.8%</b>	<b>1,423</b>	<b>-2.0%</b>	<b>1,394</b>	<b>-1.2%</b>	<b>1,377</b>	<b>-0.7%</b>	<b>1,367</b>	<b>-26.1%</b>	<b>1,010</b>	<b>-25.0%</b>	<b>757</b>	<b>-14.8%</b>	<b>645</b>		
May	Buffalo	285	0.7%	287	-15.3%	243	15.6%	281	-16.0%	236	11.9%	264	-53.0%	124	1.6%	126	-17.5%	104		
	Rochester	174	-18.4%	142	3.5%	147	-1.4%	145	-20.7%	115	7.8%	124	-46.0%	67	3.0%	69	-13.0%	60		
	WDNY Total Month	459	-6.5%	429	-9.1%	390	9.2%	426	-17.6%	351	10.5%	388	-50.8%	191	2.1%	195	-15.9%	164		
	<b>WDNY Total YTD</b>	<b>2,145</b>	<b>-10.3%</b>	<b>1,923</b>	<b>-5.7%</b>	<b>1,813</b>	<b>0.4%</b>	<b>1,820</b>	<b>-5.1%</b>	<b>1,728</b>	<b>1.6%</b>	<b>1,755</b>	<b>-31.6%</b>	<b>1,201</b>	<b>-20.7%</b>	<b>952</b>	<b>-15.0%</b>	<b>809</b>		
June	Buffalo	273	-12.5%	239	4.6%	250	-5.2%	237	-8.4%	217	-11.1%	193	-35.8%	124	-7.3%	115	0.9%	116		
	Rochester	126	5.6%	133	3.8%	138	0.7%	139	-12.2%	122	-11.5%	108	-23.1%	83	-18.1%	68	-29.4%	48		
	WDNY Total Month	399	-6.8%	372	4.3%	388	-3.1%	376	-9.8%	339	-11.2%	301	-31.2%	207	-11.6%	183	-10.4%	164		
	<b>WDNY Total YTD</b>	<b>2,544</b>	<b>-9.8%</b>	<b>2,295</b>	<b>-4.1%</b>	<b>2,201</b>	<b>-0.2%</b>	<b>2,196</b>	<b>-5.9%</b>	<b>2,067</b>	<b>-0.5%</b>	<b>2,056</b>	<b>-31.5%</b>	<b>1,408</b>	<b>-19.4%</b>	<b>1,135</b>	<b>-14.3%</b>	<b>973</b>		

U.S. Bankruptcy Court - Western District of New York  
 Historical Case Filing Report (All Chapters)  
 Month Ending February 28, 2023

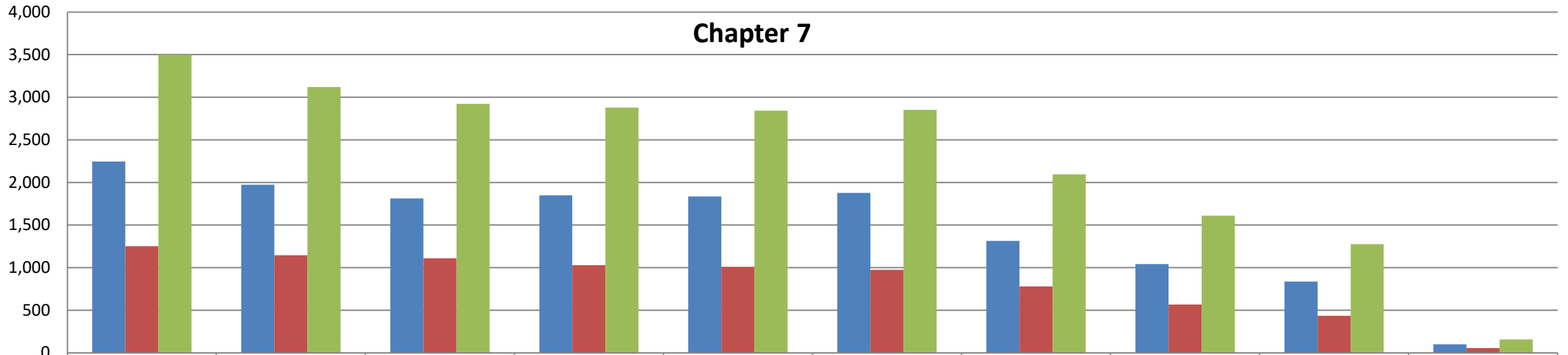
		2014	% Change	2015	% Change	2016	% Change	2017	% Change	2018	% Change	2019	% Change	2020	% Change	2021	% Change	2022	% Change	2023
July	Buffalo	234	9.4%	257	-30.7%	178	34.8%	240	-11.7%	212	9.0%	231	-33.8%	153	-13.7%	132	-29.5%	93		
	Rochester	141	-2.8%	137	-21.9%	107	5.6%	113	-8.8%	103	11.7%	115	-18.3%	94	-27.7%	68	-29.4%	48		
	WDNY Total Month	375	4.8%	394	-27.7%	285	23.9%	353	-10.8%	315	9.8%	346	-28.6%	247	-19.0%	200	-29.5%	141		
	WDNY Total YTD	2,919	-7.9%	2,689	-7.5%	2,486	2.5%	2,549	-6.6%	2,382	0.8%	2,402	-31.1%	1,655	-19.3%	1,335	-16.6%	1,114		
Aug	Buffalo	233	-8.2%	214	9.8%	235	3.4%	243	-8.2%	223	-11.2%	198	-25.8%	147	-22.4%	114	-31.6%	78		
	Rochester	140	-10.7%	126	-12.7%	110	10.0%	121	3.3%	125	-12.0%	110	-32.7%	74	-20.3%	59	-18.6%	48		
	WDNY Total Month	373	-9.1%	340	1.5%	345	5.5%	364	-4.4%	348	-11.5%	308	-28.2%	221	-21.7%	173	-27.2%	126		
	WDNY Total YTD	3,292	-8.0%	3,029	-6.5%	2,831	2.9%	2,913	-6.3%	2,730	-0.7%	2,710	-30.8%	1,876	-19.6%	1,508	-17.8%	1,240		
Sep	Buffalo	284	0.0%	284	-18.3%	232	13.8%	264	12.9%	298	8.1%	322	-64.0%	116	-8.6%	106	3.8%	110		
	Rochester	135	-20.0%	108	6.5%	115	1.7%	117	-11.1%	104	1.9%	106	-32.1%	72	-19.4%	58	3.4%	60		
	WDNY Total Month	419	-6.4%	392	-11.5%	347	9.8%	381	5.5%	402	6.5%	428	-56.1%	188	-12.8%	164	3.7%	170		
	WDNY Total YTD	3,711	-7.9%	3,421	-7.1%	3,178	3.7%	3,294	-4.9%	3,132	0.2%	3,138	-34.2%	2,064	-19.0%	1,672	-15.7%	1,410		
Oct	Buffalo	297	-11.8%	262	18.7%	311	-13.5%	269	21.6%	327	-18.3%	267	-50.9%	131	-34.4%	86	74.4%	150		
	Rochester	121	9.9%	133	-13.5%	115	3.5%	119	-2.5%	116	4.3%	121	-43.8%	68	-44.1%	38	55.3%	59		
	WDNY Total Month	418	-5.5%	395	7.8%	426	-8.9%	388	14.2%	443	-12.4%	388	-48.7%	199	-37.7%	124	68.5%	209		
	WDNY Total YTD	4,129	-7.6%	3,816	-5.6%	3,604	2.2%	3,682	-2.9%	3,575	-1.4%	3,526	-35.8%	2,263	-20.6%	1,796	-9.9%	1,619		
Nov	Buffalo	230	-7.4%	213	-15.0%	181	20.4%	218	-17.0%	181	6.1%	192	-44.8%	106	-16.0%	89	-1.1%	88		
	Rochester	127	0.0%	127	-1.6%	125	-4.0%	120	0.8%	121	-7.4%	112	-29.5%	79	-43.0%	45	24.4%	56		
	WDNY Total Month	357	-4.8%	340	-10.0%	306	10.5%	338	-10.7%	302	0.7%	304	-39.1%	185	-27.6%	134	7.5%	144		
	WDNY Total YTD	4,486	-7.4%	4,156	-5.9%	3,910	2.8%	4,020	-3.6%	3,877	-1.2%	3,830	-36.1%	2,448	-21.2%	1,930	-8.7%	1,763		
Dec	Buffalo	210	-10.5%	189	-23.8%	144	27.8%	184	-21.7%	144	18.1%	170	-29.4%	120	-42.5%	69	23.2%	85		
	Rochester	147	-45.6%	80	28.8%	103	-11.7%	91	5.5%	96	-24.0%	73	-19.2%	59	-22.0%	46	19.6%	55		
	WDNY Total Month	357	-24.9%	269	-8.2%	247	11.3%	275	-12.7%	240	1.3%	243	-26.3%	179	-35.8%	115	21.7%	140		
	WDNY Total YTD	4,843	-8.7%	4,425	-6.1%	4,157	3.3%	4,295	-4.1%	4,117	-1.1%	4,073	-35.5%	2,627	-22.2%	2,045	-6.9%	1,903		
		<b>2014</b>	<b>% Change</b>	<b>2015</b>	<b>% Change</b>	<b>2016</b>	<b>% Change</b>	<b>2017</b>	<b>% Change</b>	<b>2018</b>	<b>% Change</b>	<b>2019</b>	<b>% Change</b>	<b>2020</b>	<b>% Change</b>	<b>2021</b>	<b>% Change</b>	<b>2022</b>	<b>% Change</b>	<b>2023</b>
	<b>Buffalo Total</b>	3,161	-7.4%	2,928	-8.2%	2,688	6.6%	2,866	-4.7%	2,732	1.0%	2,760	-39.3%	1,674	-21.3%	1,317	-5.1%	1,250		
	<b>Rochester Total</b>	1,682	-11.0%	1,497	-1.9%	1,469	-2.7%	1,429	-3.1%	1,385	-5.2%	1,313	-27.4%	953	-23.6%	728	-10.3%	653		
	<b>WDNY Total</b>	4,843	-8.6%	4,425	-6.1%	4,157	3.3%	4,295	-4.1%	4,117	-1.1%	4,073	-35.5%	2,627	-22.2%	2,045	-6.9%	1,903		

		Chapter 7	Chapter 13	Chapter 11	Chapter 12/15	Cases Filed by Month	Cases Filed YTD	Adversary Cases				Case Closings		
								Pending Prior Month	New	Closed Current Month	Net Pending	Cases Closed 2022	Cases Closed 2023	% change
Jan.	Chief Judge Bucki	38	27	2	0	67	67	13	1	0	14	81	117	44.4%
	Judge Kaplan	0	0	0	0	0	0	18	0	0	18	15	1	-93.3%
	Judge Warren(Buffalo)	5	6	0	0	11	11	0	0	0	0	49	29	-40.8%
	Judge Warren(Rochester)	33	22	1	0	56	56	22	4	2	24	64	62	-3.1%
	Buffalo Total	43	33	2	0	78	78	31	1	0	32	145	147	1.4%
	Rochester Total	33	22	1	0	56	56	22	4	2	24	64	62	-3.1%
	<b>WDNY Total</b>	<b>76</b>	<b>55</b>	<b>3</b>	<b>0</b>	<b>134</b>	<b>134</b>	<b>53</b>	<b>5</b>	<b>2</b>	<b>56</b>	<b>209</b>	<b>209</b>	0.0%
Feb.	Chief Judge Bucki	41	20	0	0	61	128	14	0	2	12	86	78	-9.3%
	Judge Kaplan	0	0	0	0	0	0	18	0	0	18	14	0	-100.0%
	Judge Warren(Buffalo)	17	6	0	0	23	34	0	0	0	0	14	15	7.1%
	Judge Warren(Rochester)	23	15	1	0	39	95	24	0	3	21	36	55	52.8%
	Buffalo Total	58	26	0	0	84	162	32	0	5	30	114	93	-18.4%
	Rochester Total	23	15	1	0	39	95	24	0	3	21	36	55	52.8%
	<b>WDNY Total</b>	<b>81</b>	<b>41</b>	<b>1</b>	<b>0</b>	<b>123</b>	<b>257</b>	<b>56</b>	<b>0</b>	<b>8</b>	<b>51</b>	<b>150</b>	<b>148</b>	-1.3%

Year to Date	Chapter 7	Chapter 13	Chapter 11	Chapter 12 & 15	YTD Totals All Chapters	Adversary Cases YTD			Case Closings YTD		
						New	Closed	Net Pending	Cases Closed 2022	Cases Closed 2023	% change
Chief Judge Bucki YTD	79	47	2	0	128	1	2	12	167	195	16.8%
Judge Kaplan YTD	0	0	0	0	0	0	0	18	29	1	-96.6%
Judge Warren (Buff & Roch) YTD	78	49	2	0	129	4	5	21	163	161	-1.2%
Judge Warren (Buffalo) YTD	22	12	0	0	34	0	0	0	63	44	-30.2%
Judge Warren (Rochester) YTD	56	37	2	0	95	4	5	21	100	117	17.0%
<b>Buffalo Total YTD</b>	<b>101</b>	<b>59</b>	<b>2</b>	<b>0</b>	<b>162</b>	<b>1</b>	<b>5</b>	<b>30</b>	<b>259</b>	<b>240</b>	-7.3%
<b>Rochester Total YTD</b>	<b>56</b>	<b>37</b>	<b>2</b>	<b>0</b>	<b>95</b>	<b>4</b>	<b>5</b>	<b>21</b>	<b>100</b>	<b>117</b>	17.0%
<b>WDNY Totals YTD</b>	<b>157</b>	<b>96</b>	<b>4</b>	<b>0</b>	<b>257</b>	<b>5</b>	<b>10</b>	<b>51</b>	<b>359</b>	<b>357</b>	-0.6%



	2014	2015	2016	2017	2018	2019	2020	2021	2022	2023
■ Buffalo	3,161	2,928	2,688	2,866	2,732	2,760	1,674	1,317	1,250	162
■ Rochester	1,682	1,497	1,469	1,429	1,385	1,313	953	728	653	95
■ WDNY Total	4,843	4,425	4,157	4,295	4,117	4,073	2,627	2,045	1,903	257



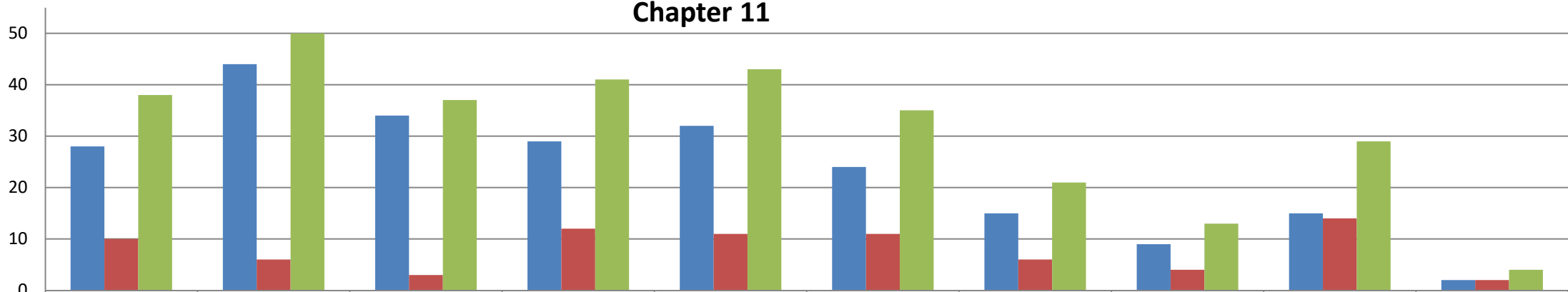
	2014	2015	2016	2017	2018	2019	2020	2021	2022	2023
■ Buffalo	2,246	1,974	1,813	1,849	1,835	1,877	1,315	1,043	838	101
■ Rochester	1,252	1,145	1,110	1,029	1,007	975	780	567	436	56
■ WDNY Total	3,498	3,119	2,923	2,878	2,842	2,852	2,095	1,610	1,274	157

### Chapter 13 (includes Chapter 12 & 15)



	2014	2015	2016	2017	2018	2019	2020	2021	2022	2023
■ Buffalo	887	909	841	988	865	859	344	265	397	59
■ Rochester	420	347	356	388	367	327	167	157	203	37
■ WDNY Totals	1,307	1,256	1,197	1,376	1,232	1,186	511	422	600	96

### Chapter 11



	2014	2015	2016	2017	2018	2019	2020	2021	2022	2023
■ Buffalo	28	44	34	29	32	24	15	9	15	2
■ Rochester	10	6	3	12	11	11	6	4	14	2
■ WDNY Totals	38	50	37	41	43	35	21	13	29	4