

U.S. Bankruptcy Court - Western District of New York  
Case Filing Report  
Month Ending January 31, 2019

Report # 1  
Page 1 of 1

		Cases Filed 2018	Cases Filed 2019	% change same month	% change YTD	Chapter 7				Chapter 13				Chapter 11	Ch 12 & 15
						<sup>1</sup> Non-Bus.	<sup>2</sup> Business	<sup>3</sup> Other	Total Ch. 7	<sup>1</sup> Non-Bus.	<sup>2</sup> Business	<sup>3</sup> Other	Total Ch.13		
Jan.	Buffalo	188	172	-8.5%	-8.5%	113	2	0	115	53	1	0	54	2	1
	Rochester	100	98	-2.0%	-2.0%	67	4	0	71	26	0	0	26	1	0
	WDNY Total Month	288	270	-6.3%	-6.3%	180	6	0	186	79	1	0	80	3	1
	WDNY Total YTD	288	270			180	6	0	186	79	1	0	80	3	1
<b>Year to Date</b>															
		Cases Filed 2018	Cases Filed 2019	% change		Chapter 7 YTD				Chapter 13 YTD				Chapter 11 YTD	Chapter 12 & 15 YTD
						<sup>1</sup> Non-Bus.	<sup>2</sup> Business	<sup>3</sup> Other	Total Ch. 7	<sup>1</sup> Non-Bus.	<sup>2</sup> Business	<sup>3</sup> Other	Total Ch.13		
Buffalo YTD		188	172	-8.5%		113	2	0	115	53	1	0	54	2	1
Rochester YTD		100	98	-2.0%		67	4	0	71	26	0	0	26	1	0
<b>WDNY YTD</b>		<b>288</b>	<b>270</b>	<b>-6.3%</b>		<b>180</b>	<b>6</b>	<b>0</b>	<b>186</b>	<b>79</b>	<b>1</b>	<b>0</b>	<b>80</b>	<b>3</b>	<b>1</b>

<sup>1</sup> Primary "Nature of Debt" is consumer debt.    <sup>2</sup> Primary "Nature of Debt" is business debt.    <sup>3</sup> Primary "Nature of Debt" is other.

Counties in Buffalo Division	Jan.	Feb.	March	April	May	June	July	Aug.	Sept.	Oct.	Nov.	Dec.	County Totals 2019 YTD	% chg from 2018 YTD
(Olean) Allegany	3												3	200.0%
(Olean) Cattaraugus	9												9	12.5%
Chautauqua	10												10	-23.1%
Erie	115												115	-6.5%
(Batavia) Genesee	8												8	14.3%
Niagara	16												16	-38.5%
(Batavia) Orleans	7												7	0.0%
(Batavia) Wyoming	4												4	33.3%
Out of County	0												0	
<b>2019 Totals</b>	<b>172</b>	<b>0</b>	<b>0</b>	<b>0</b>	<b>0</b>	<b>0</b>	<b>0</b>	<b>0</b>	<b>0</b>	<b>0</b>	<b>0</b>	<b>0</b>	<b>172</b>	<b>-8.5%</b>

Counties in Rochester Division	Jan.	Feb.	March	April	May	June	July	Aug.	Sept.	Oct.	Nov.	Dec.	County Totals 2019 YTD	% chg from 2018 YTD
(WG) Chemung	12												12	50.0%
Livingston	7												7	250.0%
Monroe	53												53	-29.3%
Ontario	8												8	60.0%
(WG) Schuyler	1												1	0.0%
Seneca	2												2	-50.0%
(WG) Steuben	10												10	400.0%
Wayne	5												5	66.7%
Yates	0												0	0.0%
Out of County	0												0	
<b>2019 Totals</b>	<b>98</b>	<b>0</b>	<b>0</b>	<b>0</b>	<b>0</b>	<b>0</b>	<b>0</b>	<b>0</b>	<b>0</b>	<b>0</b>	<b>0</b>	<b>0</b>	<b>98</b>	<b>-2.0%</b>

<b>WDNY Combined Totals</b>	<b>270</b>	<b>0</b>	<b>0</b>	<b>0</b>	<b>0</b>	<b>0</b>	<b>0</b>	<b>0</b>	<b>0</b>	<b>0</b>	<b>0</b>	<b>0</b>	<b>270</b>	<b>-6.3%</b>
-----------------------------	------------	----------	----------	----------	----------	----------	----------	----------	----------	----------	----------	----------	------------	--------------

U.S. Bankruptcy Court - Western District of New York

Historical Case Filing Report (All Chapters)

Month Ending January 31, 2019

Report # 3

Page 1 of 2

		2010	% Change	2011	% Change	2012	% Change	2013	% Change	2014	% Change	2015	% Change	2016	% Change	2017	% Change	2018	% Change	2019
Jan.	Buffalo	350	-19.7%	281	-3.2%	272	-7.4%	252	-4.0%	242	-22.7%	188	-2.1%	184	11.4%	205	-8.3%	188	-8.5%	172
	Rochester	190	-19.5%	153	-0.7%	152	17.8%	179	-25.1%	134	-1.5%	131	-16.8%	109	-19.3%	88	13.6%	100	-2.0%	98
	WDNY Total Month	540	-19.6%	434	-2.3%	424	1.7%	431	-12.8%	376	-15.2%	319	-8.2%	293	0.0%	293	-1.7%	288	-6.3%	270
	WDNY Total YTD	540	-19.6%	434	-2.3%	424	1.7%	431	-12.8%	376	-15.2%	319	-8.2%	293	0.0%	293	-1.7%	288	-6.3%	270
Feb.	Buffalo	368	-0.8%	365	-3.8%	351	-22.2%	273	-15.4%	231	-20.3%	184	15.2%	212	-11.8%	187	-0.5%	186		
	Rochester	198	-1.0%	196	-6.6%	183	-19.1%	148	-29.7%	104	-28.8%	74	32.4%	98	8.2%	106	-10.4%	95		
	WDNY Total Month	566	-0.9%	561	-4.8%	534	-21.2%	421	-20.4%	335	-23.0%	258	20.2%	310	-5.5%	293	-4.1%	281		
	WDNY Total YTD	1,106	-10.0%	995	-3.7%	958	-11.1%	852	-16.5%	711	-18.8%	577	4.5%	603	-2.8%	586	-2.9%	569		
Mar.	Buffalo	619	-22.5%	480	-12.7%	419	-5.5%	396	-20.7%	314	-4.5%	300	-15.0%	255	9.0%	278	-7.2%	258		
	Rochester	331	-11.8%	292	-18.8%	237	-27.4%	172	0.0%	172	-23.8%	131	13.7%	149	-2.7%	145	0.0%	145		
	WDNY Total Month	950	-18.7%	772	-15.0%	656	-13.4%	568	-14.4%	486	-11.3%	431	-6.3%	404	4.7%	423	-4.7%	403		
	WDNY Total YTD	2,056	-14.1%	1,767	-8.7%	1,614	-12.0%	1,420	-15.7%	1,197	-15.8%	1,008	-0.1%	1,007	0.2%	1,009	-3.7%	972		
Apr.	Buffalo	534	-7.5%	494	-25.3%	369	-10.3%	331	-0.9%	328	-5.2%	311	-15.4%	263	-1.1%	260	0.8%	262		
	Rochester	345	-28.4%	247	-10.5%	221	-10.0%	199	-19.1%	161	8.7%	175	-12.6%	153	-18.3%	125	14.4%	143		
	WDNY Total Month	879	-15.7%	741	-20.4%	590	-10.2%	530	-7.7%	489	-0.6%	486	-14.4%	416	-7.5%	385	5.2%	405		
	WDNY Total YTD	2,935	-14.5%	2,508	-12.1%	2,204	-11.5%	1,950	-13.5%	1,686	-11.4%	1,494	-4.8%	1,423	-2.0%	1,394	-1.2%	1,377		
May	Buffalo	590	-30.7%	409	3.2%	422	-20.1%	337	-15.4%	285	0.7%	287	-15.3%	243	15.6%	281	-16.0%	236		
	Rochester	315	-31.4%	216	-0.9%	214	-4.2%	205	-15.1%	174	-18.4%	142	3.5%	147	-1.4%	145	-20.7%	115		
	WDNY Total Month	905	-30.9%	625	1.8%	636	-14.8%	542	-15.3%	459	-6.5%	429	-9.1%	390	9.2%	426	-17.6%	351		
	WDNY Total YTD	3,840	-18.4%	3,133	-9.4%	2,840	-12.3%	2,492	-13.9%	2,145	-10.3%	1,923	-5.7%	1,813	0.4%	1,820	-5.1%	1,728		
June	Buffalo	547	-21.9%	427	-14.8%	364	-11.3%	323	-15.5%	273	-12.5%	239	4.6%	250	-5.2%	237	-8.4%	217		
	Rochester	284	-13.4%	246	-36.6%	156	4.5%	163	-22.7%	126	5.6%	133	3.8%	138	0.7%	139	-12.2%	122		
	WDNY Total Month	831	-19.0%	673	-22.7%	520	-6.5%	486	-17.9%	399	-6.8%	372	4.3%	388	-3.1%	376	-9.8%	339		
	WDNY Total YTD	4,671	-18.5%	3,806	-11.7%	3,360	-11.4%	2,978	-14.6%	2,544	-9.8%	2,295	-4.1%	2,201	-0.2%	2,196	-5.9%	2,067		

U.S. Bankruptcy Court - Western District of New York

Historical Case Filing Report (All Chapters)

Month Ending January 31, 2019

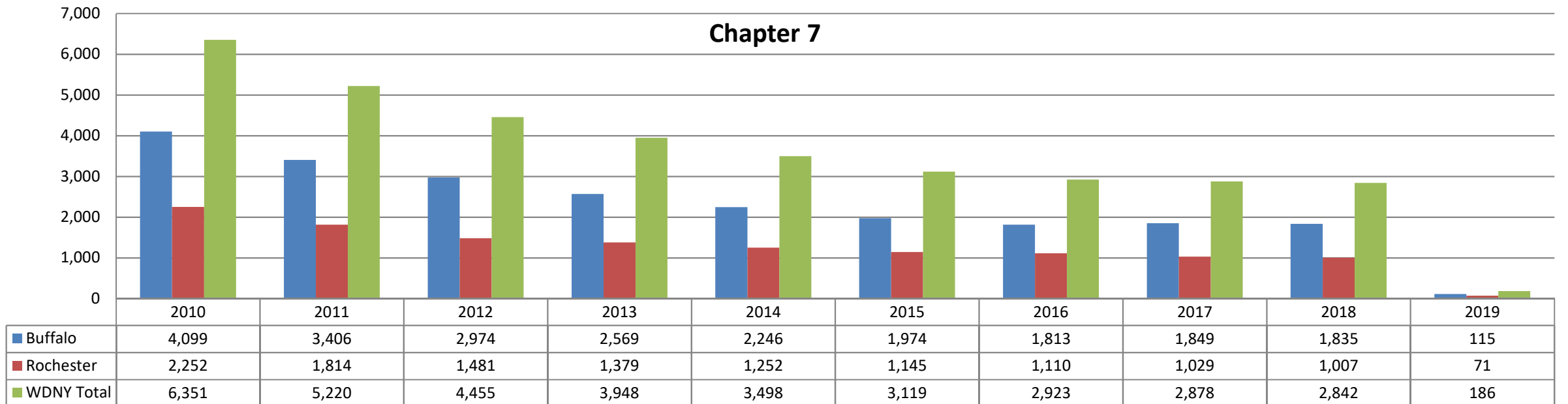
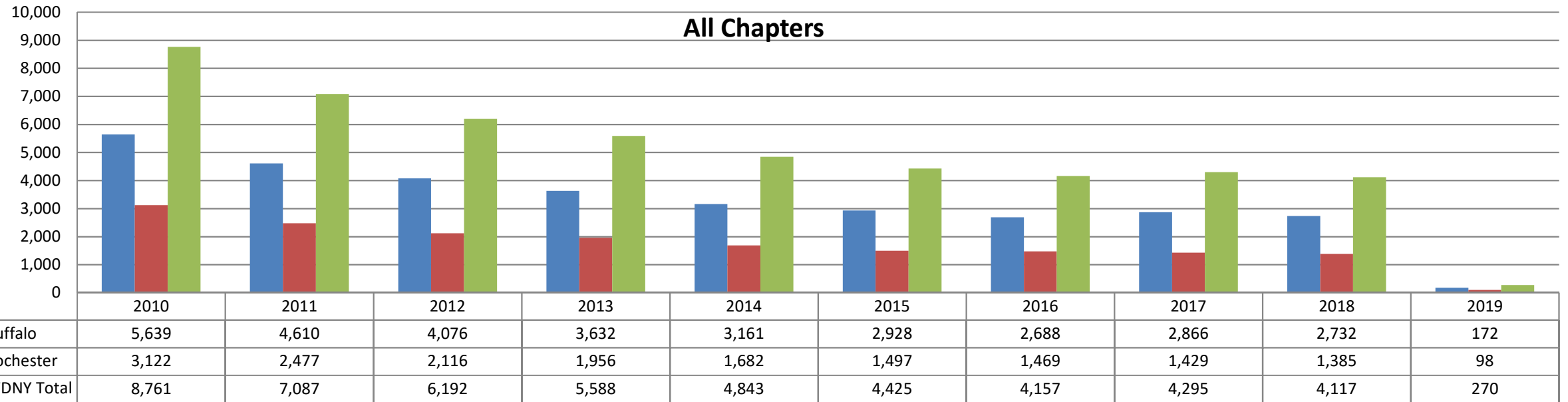
Report #3

Page 2 of 2

		2010	% Change	2011	% Change	2012	% Change	2013	% Change	2014	% Change	2015	% Change	2016	% Change	2017	% Change	2018	% Change	2019
July	Buffalo	484	-33.5%	322	1.9%	328	-13.7%	283	-17.3%	234	9.4%	257	-30.7%	178	34.8%	240	-11.7%	212		
	Rochester	248	-23.8%	189	-5.8%	178	8.4%	193	-26.9%	141	-2.8%	137	-21.9%	107	5.6%	113	-8.8%	103		
	WDNY Total Month	732	-30.2%	511	-1.0%	506	-5.9%	476	-21.2%	375	4.8%	394	-27.7%	285	23.9%	353	-10.8%	315		
	WDNY Total YTD	5,403	-20.1%	4,317	-10.4%	3,866	-10.7%	3,454	-15.5%	2,919	-7.9%	2,689	-7.5%	2,486	2.5%	2,549	-6.6%	2,382		
Aug	Buffalo	465	-16.6%	388	-7.2%	360	-15.6%	304	-23.4%	233	-8.2%	214	9.8%	235	3.4%	243	-8.2%	223		
	Rochester	284	-25.0%	213	-16.0%	179	-20.7%	142	-1.4%	140	-10.7%	126	-12.7%	110	10.0%	121	3.3%	125		
	WDNY Total Month	749	-19.8%	601	-10.3%	539	-17.3%	446	-16.4%	373	-9.1%	340	1.5%	345	5.5%	364	-4.4%	348		
	WDNY Total YTD	6,153	-20.1%	4,919	-10.4%	4,405	-11.5%	3,900	-15.6%	3,292	-8.0%	3,029	-6.5%	2,831	2.9%	2,913	-6.3%	2,730		
Sep	Buffalo	448	-6.3%	420	-39.0%	256	13.3%	290	-2.1%	284	0.0%	284	-18.3%	232	13.8%	264	12.9%	298		
	Rochester	259	-29.7%	182	-26.4%	134	15.7%	155	-12.9%	135	-20.0%	108	6.5%	115	1.7%	117	-11.1%	104		
	WDNY Total Month	707	-14.9%	602	-35.2%	390	14.1%	445	-5.8%	419	-6.4%	392	-11.5%	347	9.8%	381	5.5%	402		
	WDNY Total YTD	6,860	-19.5%	5,522	-13.2%	4,795	-9.4%	4,345	-14.6%	3,711	-7.9%	3,421	-7.1%	3,178	3.7%	3,294	-4.9%	3,132		
Oct	Buffalo	468	-22.6%	362	13.3%	410	-4.6%	391	-24.0%	297	-11.8%	262	18.7%	311	-13.5%	269	21.6%	327		
	Rochester	253	-32.0%	172	-5.8%	162	-14.2%	139	-12.9%	121	9.9%	133	-13.5%	115	3.5%	119	-2.5%	116		
	WDNY Total Month	721	-25.9%	534	7.1%	572	-7.3%	530	-21.1%	418	-5.5%	395	7.8%	426	-8.9%	388	14.2%	443		
	WDNY Total YTD	7,581	-20.1%	6,055	-11.4%	5,367	-9.2%	4,875	-15.3%	4,129	-7.6%	3,816	-5.6%	3,604	2.2%	3,682	-2.9%	3,575		
Nov	Buffalo	430	-22.3%	334	-20.7%	265	-10.9%	236	-2.5%	230	-7.4%	213	-15.0%	181	20.4%	218	-17.0%	181		
	Rochester	214	-7.9%	197	-18.8%	160	-16.3%	134	-5.2%	127	0.0%	127	-1.6%	125	-4.0%	120	0.8%	121		
	WDNY Total Month	644	-17.5%	531	-20.0%	425	-12.9%	370	-3.5%	357	-4.8%	340	-10.0%	306	10.5%	338	-10.7%	302		
	WDNY Total YTD	8,225	-19.9%	6,585	-12.0%	5,792	-9.4%	5,245	-14.5%	4,486	-7.4%	4,156	-5.9%	3,910	2.8%	4,020	-3.6%	3,877		
Dec	Buffalo	336	-2.4%	328	-20.7%	260	-16.9%	216	-2.8%	210	-10.5%	189	-23.8%	144	27.8%	184	-21.7%	144		
	Rochester	201	-13.4%	174	-19.5%	140	-9.3%	127	15.7%	147	-45.6%	80	28.8%	103	-11.7%	91	5.5%	96		
	WDNY Total Month	537	-6.5%	502	-20.3%	400	-14.3%	343	4.1%	357	-24.9%	269	-8.2%	247	11.3%	275	-12.7%	240		
	WDNY Total YTD	8,762	-19.1%	7,087	-12.6%	6,192	-9.8%	5,588	-13.3%	4,843	-8.7%	4,425	-6.1%	4,157	3.3%	4,295	-4.1%	4,117		
		<b>2010</b>	<b>% Change</b>	<b>2011</b>	<b>% Change</b>	<b>2012</b>	<b>% Change</b>	<b>2013</b>	<b>% Change</b>	<b>2014</b>	<b>% Change</b>	<b>2015</b>	<b>% Change</b>	<b>2016</b>	<b>% Change</b>	<b>2017</b>	<b>% Change</b>	<b>2018</b>	<b>% Change</b>	<b>2019</b>
	<b>Buffalo Total</b>	5,639	-18.2%	4,610	-11.6%	4,076	-10.9%	3,632	-13.0%	3,161	-7.4%	2,928	-8.2%	2,688	6.6%	2,866	-4.7%	2,732		
	<b>Rochester Total</b>	3,122	-20.7%	2,477	-14.6%	2,116	-7.6%	1,956	-14.0%	1,682	-11.0%	1,497	-1.9%	1,469	-2.7%	1,429	-3.1%	1,385		
	<b>WDNY Total</b>	8,761	-19.1%	7,087	-12.6%	6,192	-9.8%	5,588	-13.3%	4,843	-8.6%	4,425	-6.1%	4,157	3.3%	4,295	-4.1%	4,117		

		Chapter 7	Chapter 13	Chapter 11	Chapter 12/15	Cases Filed by Month	Cases Filed YTD	Adversary Cases				Case Closings		
								Pending Prior Month	New	Closed Current Month	Net Pending	Cases Closed 2018	Cases Closed 2019	% change
Jan.	Chief Judge Bucki	62	22	1	1	86	86	31	1	1	31	136	103	-24.3%
	Judge Kaplan	53	32	1	0	86	86	14	2	2	14	131	96	-26.7%
	Judge Warren	71	26	1	0	98	98	14	5	4	15	114	150	31.6%
	Buffalo Total	115	54	2	1	172	172	45	3	3	45	267	199	-25.5%
	Rochester Total	71	26	1	0	98	98	14	5	4	15	114	150	31.6%
	<b>WDNY Total</b>	<b>186</b>	<b>80</b>	<b>3</b>	<b>1</b>	<b>270</b>	<b>270</b>	<b>59</b>	<b>8</b>	<b>7</b>	<b>60</b>	<b>381</b>	<b>349</b>	<b>-8.4%</b>

Year to Date	Chapter 7	Chapter 13	Chapter 11	Chapter 12 & 15	YTD Totals All Chapters	Adversary Cases YTD			Case Closings YTD		
						New	Closed	Net Pending	Cases Closed 2018	Cases Closed 2019	% change
Chief Judge Bucki YTD	62	22	1	1	86	1	1	31	136	103	-24.3%
Judge Kaplan YTD	53	32	1	0	86	2	2	14	131	96	-26.7%
Judge Warren YTD	71	26	1	0	98	5	4	15	114	150	31.6%
Buffalo Total YTD	115	54	2	1	172	3	3	45	267	199	-25.5%
Rochester Total YTD	71	26	1	0	98	5	4	15	114	150	31.6%
<b>WDNY Totals YTD</b>	<b>186</b>	<b>80</b>	<b>3</b>	<b>1</b>	<b>270</b>	<b>8</b>	<b>7</b>	<b>60</b>	<b>381</b>	<b>349</b>	<b>-8.4%</b>

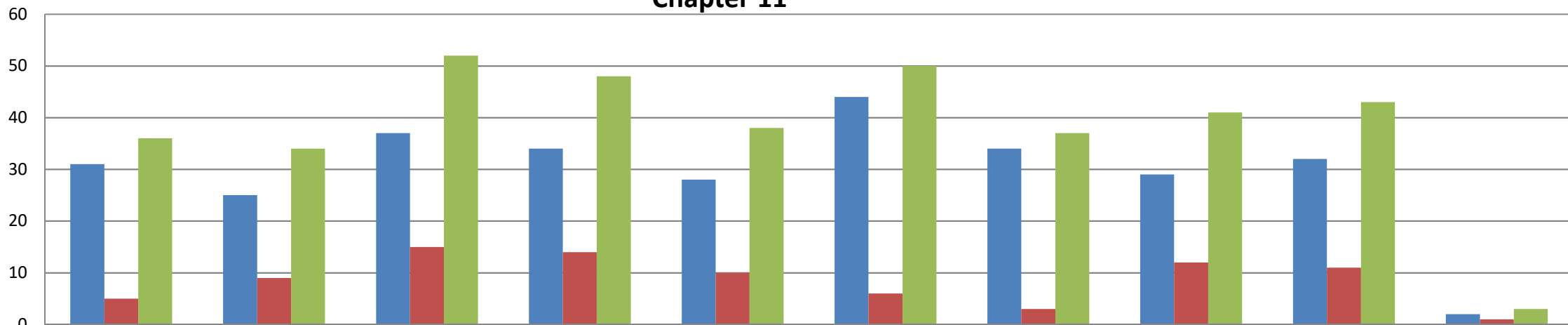


### Chapter 13 (includes Chapter 12 & 15)



	2010	2011	2012	2013	2014	2015	2016	2017	2018	2019
Buffalo	1,509	1,179	1,065	1,029	887	909	841	988	865	55
Rochester	865	654	620	563	420	347	356	388	367	26
WDNY Totals	2,374	1,833	1,685	1,592	1,307	1,256	1,197	1,376	1,232	81

### Chapter 11



	2010	2011	2012	2013	2014	2015	2016	2017	2018	2019
Buffalo	31	25	37	34	28	44	34	29	32	2
Rochester	5	9	15	14	10	6	3	12	11	1
WDNY Totals	36	34	52	48	38	50	37	41	43	3