

U.S. Bankruptcy Court - Western District of New York
Case Filing Report

Report # 1
Page 1 of 1

Month Ending January 31, 2023

		Cases Filed 2022	Cases Filed 2023	% change same month	% change YTD	Chapter 7				Chapter 13				Chapter 11	Ch 12 & 15
						¹ Non-Bus.	² Business	³ Other	Total Ch. 7	¹ Non-Bus.	² Business	³ Other	Total Ch.13		
Jan.	Buffalo	82	78	-4.9%	-4.9%	41	2	0	43	32	1	0	33	2	0
	Rochester	45	56	24.4%	24.4%	33	0	0	33	22	0	0	22	1	0
	WDNY Total Month	127	134	5.5%	5.5%	74	2	0	76	54	1	0	55	3	0
	WDNY Total YTD	127	134			74	2	0	76	54	1	0	55	3	0
Year to Date		Cases Filed 2022	Cases Filed 2023	% change		Chapter 7 YTD				Chapter 13 YTD				Chapter 11 YTD	Chapter 12 & 15 YTD
						¹ Non-Bus.	² Business	³ Other	Total Ch. 7	¹ Non-Bus.	² Business	³ Other	Total Ch.13		
Buffalo YTD		82	78	-4.9%		41	2	0	43	32	1	0	33	2	0
Rochester YTD		45	56	24.4%		33	0	0	33	22	0	0	22	1	0
WDNY YTD		127	134	5.5%		74	2	0	76	54	1	0	55	3	0

¹ Primary "Nature of Debt" is consumer debt. ² Primary "Nature of Debt" is business debt. ³ Primary "Nature of Debt" is other.

U.S. Bankruptcy Court - Western District of New York

Case Filings by County

Month Ending January 31, 2023

Report # 2

Page 1 of 1

Counties in Buffalo Division	Jan.	Feb.	March	April	May	June	July	Aug.	Sept.	Oct.	Nov.	Dec.	County Totals 2023 YTD	% chg from 2022 YTD
(Olean) Allegany	1												1	0.0%
(Olean) Cattaraugus	1												1	-50.0%
Chautauqua	2												2	-75.0%
Erie	61												61	27.1%
(Batavia) Genesee	2												2	0.0%
Niagara	9												9	-43.8%
(Batavia) Orleans	2												2	-33.3%
(Batavia) Wyoming	0												0	-100.0%
Out of County	0												0	
2023 Totals	78	0	0	0	0	0	0	0	0	0	0	0	78	-4.9%

Counties in Rochester Division	Jan.	Feb.	March	April	May	June	July	Aug.	Sept.	Oct.	Nov.	Dec.	County Totals 2023 YTD	% chg from 2022 YTD
(WG) Chemung	1												1	-66.7%
Livingston	2												2	100.0%
Monroe	42												42	31.3%
Ontario	2												2	-33.3%
(WG) Schuyler	1												1	100.0%
Seneca	0												0	-100.0%
(WG) Steuben	5												5	66.7%
Wayne	2												2	100.0%
Yates	1												1	0.0%
Out of County	0												0	
2023 Totals	56	0	0	0	0	0	0	0	0	0	0	0	56	24.4%

WDNY Combined Totals	134	0	0	0	0	0	0	0	0	0	0	0	134	5.5%
-----------------------------	------------	----------	----------	----------	----------	----------	----------	----------	----------	----------	----------	----------	------------	-------------

U.S. Bankruptcy Court - Western District of New York

Historical Case Filing Report (All Chapters)

Month Ending January 31, 2023

Report #3

Page 1 of 2

		2014	% Change	2015	% Change	2016	% Change	2017	% Change	2018	% Change	2019	% Change	2020	% Change	2021	% Change	2022	% Change	2023
Jan.	Buffalo	242	-22.7%	188	-2.1%	184	11.4%	205	-8.3%	188	-8.5%	172	8.7%	187	-50.8%	92	-10.9%	82	-4.9%	78
	Rochester	134	-1.5%	131	-16.8%	109	-19.3%	88	13.6%	100	-2.0%	98	0.0%	98	-48.0%	51	-11.8%	45	24.4%	56
	WDNY Total Month	376	-15.2%	319	-8.2%	293	0.0%	293	-1.7%	288	-6.3%	270	5.6%	285	-49.8%	143	-11.2%	127	5.5%	134
	WDNY Total YTD	376	-15.2%	319	-8.2%	293	0.0%	293	-1.7%	288	-6.3%	270	5.6%	285	-49.8%	143	-11.2%	127	5.5%	134
Feb.	Buffalo	231	-20.3%	184	15.2%	212	-11.8%	187	-0.5%	186	9.1%	203	-23.6%	155	-34.2%	102	-8.8%	93		
	Rochester	104	-28.8%	74	32.4%	98	8.2%	106	-10.4%	95	-8.4%	87	1.1%	88	-13.6%	76	-36.8%	48		
	WDNY Total Month	335	-23.0%	258	20.2%	310	-5.5%	293	-4.1%	281	3.2%	290	-16.2%	243	-26.7%	178	-20.8%	141		
	WDNY Total YTD	711	-18.8%	577	4.5%	603	-2.8%	586	-2.9%	569	-1.6%	560	-5.7%	528	-39.2%	321	-16.5%	268		
Mar.	Buffalo	314	-4.5%	300	-15.0%	255	9.0%	278	-7.2%	258	6.6%	275	-21.8%	215	-29.8%	151	-12.6%	132		
	Rochester	172	-23.8%	131	13.7%	149	-2.7%	145	0.0%	145	-17.2%	120	-3.3%	116	-37.9%	72	-9.7%	65		
	WDNY Total Month	486	-11.3%	431	-6.3%	404	4.7%	423	-4.7%	403	-2.0%	395	-16.2%	331	-32.6%	223	-11.7%	197		
	WDNY Total YTD	1,197	-15.8%	1,008	-0.1%	1,007	0.2%	1,009	-3.7%	972	-1.7%	955	-10.1%	859	-36.7%	544	-14.5%	465		
Apr.	Buffalo	328	-5.2%	311	-15.4%	263	-1.1%	260	0.8%	262	4.2%	273	-64.8%	96	40.6%	135	-11.9%	119		
	Rochester	161	8.7%	175	-12.6%	153	-18.3%	125	14.4%	143	-2.8%	139	-60.4%	55	41.8%	78	-21.8%	61		
	WDNY Total Month	489	-0.6%	486	-14.4%	416	-7.5%	385	5.2%	405	1.7%	412	-63.3%	151	41.1%	213	-15.5%	180		
	WDNY Total YTD	1,686	-11.4%	1,494	-4.8%	1,423	-2.0%	1,394	-1.2%	1,377	-0.7%	1,367	-26.1%	1,010	-25.0%	757	-14.8%	645		
May	Buffalo	285	0.7%	287	-15.3%	243	15.6%	281	-16.0%	236	11.9%	264	-53.0%	124	1.6%	126	-17.5%	104		
	Rochester	174	-18.4%	142	3.5%	147	-1.4%	145	-20.7%	115	7.8%	124	-46.0%	67	3.0%	69	-13.0%	60		
	WDNY Total Month	459	-6.5%	429	-9.1%	390	9.2%	426	-17.6%	351	10.5%	388	-50.8%	191	2.1%	195	-15.9%	164		
	WDNY Total YTD	2,145	-10.3%	1,923	-5.7%	1,813	0.4%	1,820	-5.1%	1,728	1.6%	1,755	-31.6%	1,201	-20.7%	952	-15.0%	809		
June	Buffalo	273	-12.5%	239	4.6%	250	-5.2%	237	-8.4%	217	-11.1%	193	-35.8%	124	-7.3%	115	0.9%	116		
	Rochester	126	5.6%	133	3.8%	138	0.7%	139	-12.2%	122	-11.5%	108	-23.1%	83	-18.1%	68	-29.4%	48		
	WDNY Total Month	399	-6.8%	372	4.3%	388	-3.1%	376	-9.8%	339	-11.2%	301	-31.2%	207	-11.6%	183	-10.4%	164		
	WDNY Total YTD	2,544	-9.8%	2,295	-4.1%	2,201	-0.2%	2,196	-5.9%	2,067	-0.5%	2,056	-31.5%	1,408	-19.4%	1,135	-14.3%	973		

U.S. Bankruptcy Court - Western District of New York
Historical Case Filing Report (All Chapters)

Month Ending January 31, 2023

Report #3
Page 2 of 2

		2014	% Change	2015	% Change	2016	% Change	2017	% Change	2018	% Change	2019	% Change	2020	% Change	2021	% Change	2022	% Change	2023
July	Buffalo	234	9.4%	257	-30.7%	178	34.8%	240	-11.7%	212	9.0%	231	-33.8%	153	-13.7%	132	-29.5%	93		
	Rochester	141	-2.8%	137	-21.9%	107	5.6%	113	-8.8%	103	11.7%	115	-18.3%	94	-27.7%	68	-29.4%	48		
	WDNY Total Month	375	4.8%	394	-27.7%	285	23.9%	353	-10.8%	315	9.8%	346	-28.6%	247	-19.0%	200	-29.5%	141		
	WDNY Total YTD	2,919	-7.9%	2,689	-7.5%	2,486	2.5%	2,549	-6.6%	2,382	0.8%	2,402	-31.1%	1,655	-19.3%	1,335	-16.6%	1,114		
Aug	Buffalo	233	-8.2%	214	9.8%	235	3.4%	243	-8.2%	223	-11.2%	198	-25.8%	147	-22.4%	114	-31.6%	78		
	Rochester	140	-10.7%	126	-12.7%	110	10.0%	121	3.3%	125	-12.0%	110	-32.7%	74	-20.3%	59	-18.6%	48		
	WDNY Total Month	373	-9.1%	340	1.5%	345	5.5%	364	-4.4%	348	-11.5%	308	-28.2%	221	-21.7%	173	-27.2%	126		
	WDNY Total YTD	3,292	-8.0%	3,029	-6.5%	2,831	2.9%	2,913	-6.3%	2,730	-0.7%	2,710	-30.8%	1,876	-19.6%	1,508	-17.8%	1,240		
Sep	Buffalo	284	0.0%	284	-18.3%	232	13.8%	264	12.9%	298	8.1%	322	-64.0%	116	-8.6%	106	3.8%	110		
	Rochester	135	-20.0%	108	6.5%	115	1.7%	117	-11.1%	104	1.9%	106	-32.1%	72	-19.4%	58	3.4%	60		
	WDNY Total Month	419	-6.4%	392	-11.5%	347	9.8%	381	5.5%	402	6.5%	428	-56.1%	188	-12.8%	164	3.7%	170		
	WDNY Total YTD	3,711	-7.9%	3,421	-7.1%	3,178	3.7%	3,294	-4.9%	3,132	0.2%	3,138	-34.2%	2,064	-19.0%	1,672	-15.7%	1,410		
Oct	Buffalo	297	-11.8%	262	18.7%	311	-13.5%	269	21.6%	327	-18.3%	267	-50.9%	131	-34.4%	86	74.4%	150		
	Rochester	121	9.9%	133	-13.5%	115	3.5%	119	-2.5%	116	4.3%	121	-43.8%	68	-44.1%	38	55.3%	59		
	WDNY Total Month	418	-5.5%	395	7.8%	426	-8.9%	388	14.2%	443	-12.4%	388	-48.7%	199	-37.7%	124	68.5%	209		
	WDNY Total YTD	4,129	-7.6%	3,816	-5.6%	3,604	2.2%	3,682	-2.9%	3,575	-1.4%	3,526	-35.8%	2,263	-20.6%	1,796	-9.9%	1,619		
Nov	Buffalo	230	-7.4%	213	-15.0%	181	20.4%	218	-17.0%	181	6.1%	192	-44.8%	106	-16.0%	89	-1.1%	88		
	Rochester	127	0.0%	127	-1.6%	125	-4.0%	120	0.8%	121	-7.4%	112	-29.5%	79	-43.0%	45	24.4%	56		
	WDNY Total Month	357	-4.8%	340	-10.0%	306	10.5%	338	-10.7%	302	0.7%	304	-39.1%	185	-27.6%	134	7.5%	144		
	WDNY Total YTD	4,486	-7.4%	4,156	-5.9%	3,910	2.8%	4,020	-3.6%	3,877	-1.2%	3,830	-36.1%	2,448	-21.2%	1,930	-8.7%	1,763		
Dec	Buffalo	210	-10.5%	189	-23.8%	144	27.8%	184	-21.7%	144	18.1%	170	-29.4%	120	-42.5%	69	23.2%	85		
	Rochester	147	-45.6%	80	28.8%	103	-11.7%	91	5.5%	96	-24.0%	73	-19.2%	59	-22.0%	46	19.6%	55		
	WDNY Total Month	357	-24.9%	269	-8.2%	247	11.3%	275	-12.7%	240	1.3%	243	-26.3%	179	-35.8%	115	21.7%	140		
	WDNY Total YTD	4,843	-8.7%	4,425	-6.1%	4,157	3.3%	4,295	-4.1%	4,117	-1.1%	4,073	-35.5%	2,627	-22.2%	2,045	-6.9%	1,903		
		2014	% Change	2015	% Change	2016	% Change	2017	% Change	2018	% Change	2019	% Change	2020	% Change	2021	% Change	2022	% Change	2023
	Buffalo Total	3,161	-7.4%	2,928	-8.2%	2,688	6.6%	2,866	-4.7%	2,732	1.0%	2,760	-39.3%	1,674	-21.3%	1,317	-5.1%	1,250		
	Rochester Total	1,682	-11.0%	1,497	-1.9%	1,469	-2.7%	1,429	-3.1%	1,385	-5.2%	1,313	-27.4%	953	-23.6%	728	-10.3%	653		
	WDNY Total	4,843	-8.6%	4,425	-6.1%	4,157	3.3%	4,295	-4.1%	4,117	-1.1%	4,073	-35.5%	2,627	-22.2%	2,045	-6.9%	1,903		

U.S. Bankruptcy Court - Western District of New York

Caseload by Judge, Division & District

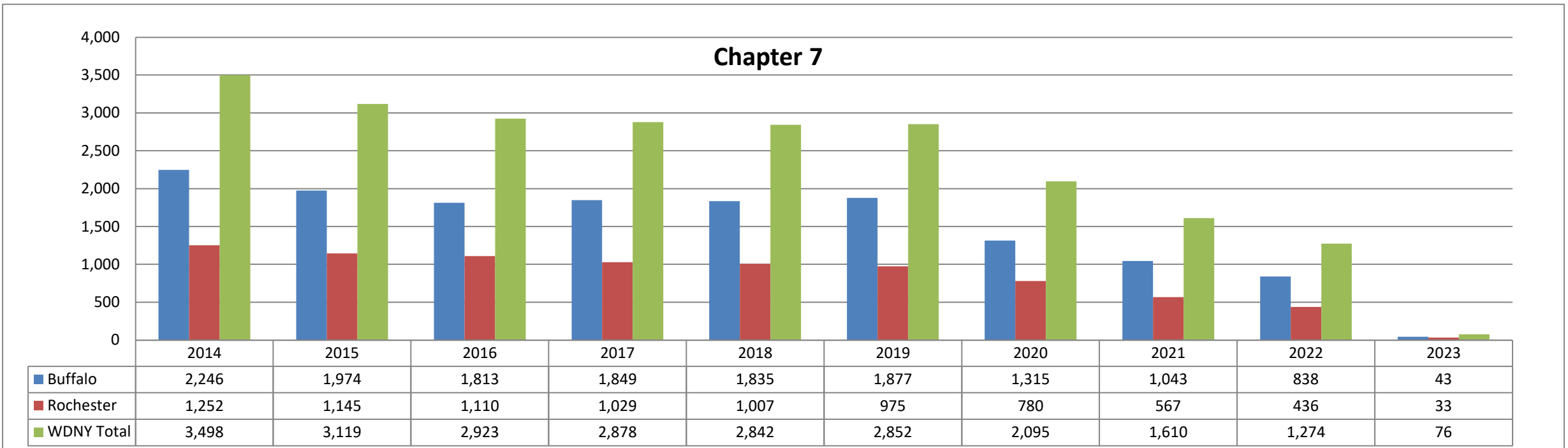
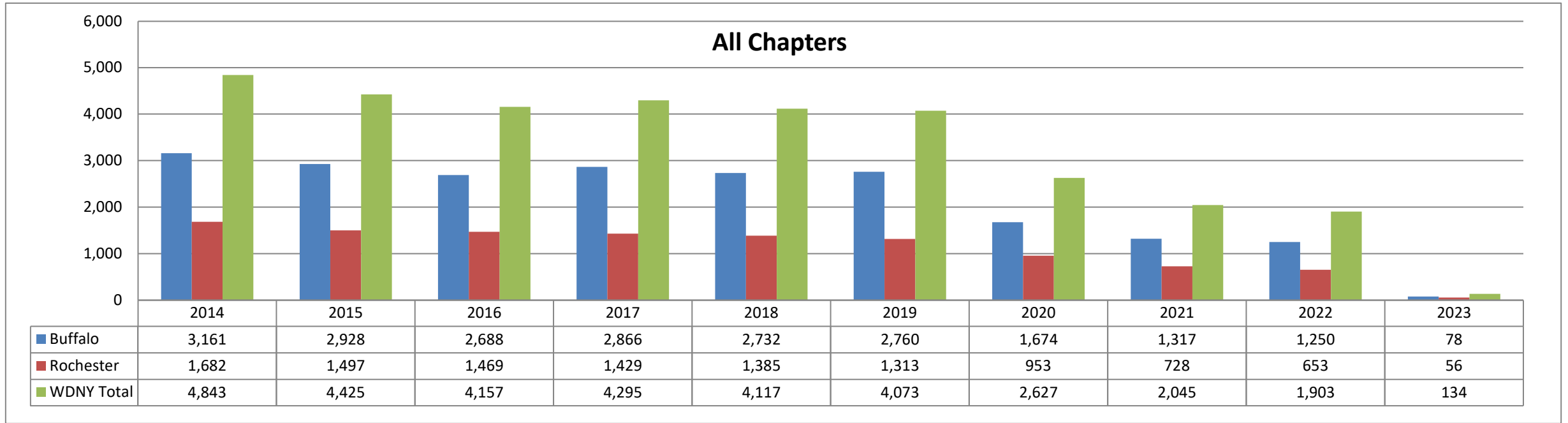
Month Ending January 31, 2023

Report #4

Page 1 of 1

		Chapter 7	Chapter 13	Chapter 11	Chapter 12/15	Cases Filed by Month	Cases Filed YTD	Adversary Cases				Case Closings		
								Pending Prior Month	New	Closed Current Month	Net Pending	Cases Closed 2022	Cases Closed 2023	% change
Jan.	Chief Judge Bucki	38	27	2	0	67	67	13	1	0	14	81	117	44.4%
	Judge Kaplan	0	0	0	0	0	0	18	0	0	18	15	1	-93.3%
	Judge Warren(Buffalo)	5	6	0	0	11	11	0	0	0	0	49	29	-40.8%
	Judge Warren(Rochester)	33	22	1	0	56	56	22	4	2	24	64	62	-3.1%
	Buffalo Total	43	33	2	0	78	78	31	1	0	32	145	147	1.4%
	Rochester Total	33	22	1	0	56	56	22	4	2	24	64	62	-3.1%
	WDNY Total	76	55	3	0	134	134	53	5	2	56	209	209	0.0%

Year to Date	Chapter 7	Chapter 13	Chapter 11	Chapter 12 & 15	YTD Totals All Chapters	Adversary Cases YTD			Case Closings YTD		
						New	Closed	Net Pending	Cases Closed 2022	Cases Closed 2023	% change
Chief Judge Bucki YTD	38	27	2	0	67	1	0	14	81	117	44.4%
Judge Kaplan YTD	0	0	0	0	0	0	0	18	15	1	-93.3%
Judge Warren (Buff & Roch) YTD	38	28	1	0	67	4	2	24	113	91	-19.5%
Judge Warren (Buffalo) YTD	5	6	0	0	11	0	0	0	49	29	-40.8%
Judge Warren (Rochester) YTD	33	22	1	0	56	4	2	24	64	62	-3.1%
Buffalo Total YTD	43	33	2	0	78	1	0	32	145	147	1.4%
Rochester Total YTD	33	22	1	0	56	4	2	24	64	62	-3.1%
WDNY Totals YTD	76	55	3	0	134	5	2	56	209	209	0.0%

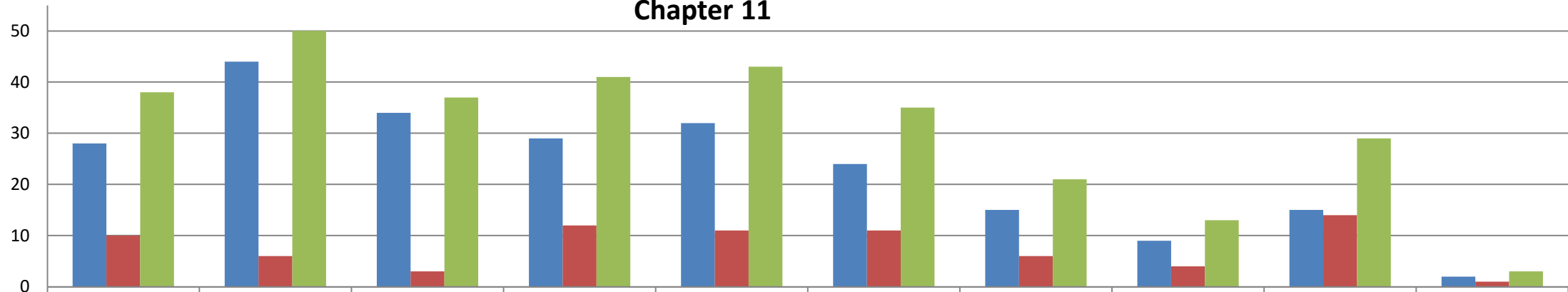


Chapter 13 (includes Chapter 12 & 15)



	2014	2015	2016	2017	2018	2019	2020	2021	2022	2023
Buffalo	887	909	841	988	865	859	344	265	397	33
Rochester	420	347	356	388	367	327	167	157	203	22
WDNY Totals	1,307	1,256	1,197	1,376	1,232	1,186	511	422	600	55

Chapter 11



	2014	2015	2016	2017	2018	2019	2020	2021	2022	2023
Buffalo	28	44	34	29	32	24	15	9	15	2
Rochester	10	6	3	12	11	11	6	4	14	1
WDNY Totals	38	50	37	41	43	35	21	13	29	3