

		Cases Filed 2020	Cases Filed 2021	% change same month	% change YTD	Chapter 7				Chapter 13				Chapter 11	Ch 12 & 15
						¹ Non-Bus.	² Business	³ Other	Total Ch. 7	¹ Non-Bus.	² Business	³ Other	Total Ch.13		
Jan.	Buffalo	187	92	-50.8%	-50.8%	70	4	0	74	18	0	0	18	0	0
	Rochester	98	51	-48.0%	-48.0%	36	5	0	41	9	0	0	9	1	0
	WDNY Total Month	285	143	-49.8%	-49.8%	106	9	0	115	27	0	0	27	1	0
	WDNY Total YTD	285	143			106	9	0	115	27	0	0	27	1	0
Feb.	Buffalo	155	102	-34.2%	-43.3%	84	1	1	86	15	0	0	15	1	0
	Rochester	88	76	-13.6%	-31.7%	54	2	0	56	19	1	0	20	0	0
	WDNY Total Month	243	178	-26.7%	-39.2%	138	3	1	142	34	1	0	35	1	0
	WDNY Total YTD	528	321			244	12	1	257	61	1	0	62	2	0
Mar.	Buffalo	215	151	-29.8%	-38.1%	126	1	0	127	24	0	0	24	0	0
	Rochester	116	72	-37.9%	-34.1%	52	1	0	53	18	0	0	18	1	0
	WDNY Total Month	331	223	-32.6%	-36.7%	178	2	0	180	42	0	0	42	1	0
	WDNY Total YTD	859	544			422	14	1	437	103	1	0	104	3	0
Apr.	Buffalo	96	135	40.6%	-26.5%	105	4	1	110	24	0	0	24	1	0
	Rochester	55	78	41.8%	-22.4%	67	1	0	68	9	1	0	10	0	0
	WDNY Total Month	151	213	41.1%	-25.0%	172	5	1	178	33	1	0	34	1	0
	WDNY Total YTD	1,010	757			594	19	2	615	136	2	0	138	4	0
May	Buffalo	124	126	1.6%	-22.0%	94	5	0	99	25	1	0	26	1	0
	Rochester	67	69	3.0%	-18.4%	50	3	1	54	14	0	0	14	0	1
	WDNY Total Month	191	195	2.1%	-20.7%	144	8	1	153	39	1	0	40	1	1
	WDNY Total YTD	1,201	952			738	27	3	768	175	3	0	178	5	1

¹ Primary "Nature of Debt" is consumer debt.

² Primary "Nature of Debt" is business debt.

³ Primary "Nature of Debt" is other.

U.S. Bankruptcy Court - Western District of New York

Case Filing Report

Month Ending May 31, 2021

Report # 1

Page 2 of 2

Year to Date	Cases Filed 2020	Cases Filed 2021	% change	Chapter 7 YTD				Chapter 13 YTD				Chapter 11 YTD	Chapter 12 & 15 YTD
				¹ Non-Bus.	² Business	³ Other	Total Ch. 7	¹ Non-Bus.	² Business	³ Other	Total Ch.13		
Buffalo YTD	777	606	-22.0%	479	15	2	496	106	1	0	107	3	0
Rochester YTD	424	346	-18.4%	259	12	1	272	69	2	0	71	2	1
WDNY YTD	1,201	952	-20.7%	738	27	3	768	175	3	0	178	5	1

¹ Primary "Nature of Debt" is consumer debt.

² Primary "Nature of Debt" is business debt.

³ Primary "Nature of Debt" is other.

U.S. Bankruptcy Court - Western District of New York

Case Filings by County

Month Ending May 31, 2021

Report # 2
Page 1 of 1

Counties in Buffalo Division	Jan.	Feb.	March	April	May	June	July	Aug.	Sept.	Oct.	Nov.	Dec.	County Totals 2021 YTD	% chg from 2020 YTD
(Olean) Allegany	0	2	1	2	0								5	-68.8%
(Olean) Cattaraugus	5	6	3	8	5								27	-10.0%
Chautauqua	8	9	14	10	9								50	-5.7%
Erie	58	58	98	82	79								375	-23.8%
(Batavia) Genesee	4	6	4	5	5								24	-17.2%
Niagara	13	15	26	25	21								100	-25.9%
(Batavia) Orleans	3	3	3	2	2								13	0.0%
(Batavia) Wyoming	1	3	2	1	4								11	22.2%
Out of County	0	0	0	0	1								1	
2021 Totals	92	102	151	135	126	0	0	0	0	0	0	0	606	-22.0%

Counties in Rochester Division	Jan.	Feb.	March	April	May	June	July	Aug.	Sept.	Oct.	Nov.	Dec.	County Totals 2021 YTD	% chg from 2020 YTD
(WG) Chemung	2	4	3	7	7								23	-11.5%
Livingston	3	1	1	4	1								10	-23.1%
Monroe	37	48	46	42	43								216	-19.4%
Ontario	3	9	6	11	4								33	-13.2%
(WG) Schuyler	1	1	0	4	2								8	14.3%
Seneca	0	3	3	1	2								9	50.0%
(WG) Steuben	2	2	9	1	3								17	-32.0%
Wayne	3	6	3	4	5								21	-44.7%
Yates	0	2	1	4	2								9	n/a
Out of County	0	0	0	0	0								0	
2021 Totals	51	76	72	78	69	0	0	0	0	0	0	0	346	-18.4%

WDNY Combined Totals	143	178	223	213	195	0	0	0	0	0	0	0	952	-20.7%
-----------------------------	------------	------------	------------	------------	------------	----------	----------	----------	----------	----------	----------	----------	------------	---------------

U.S. Bankruptcy Court - Western District of New York

Historical Case Filing Report (All Chapters)

Month Ending May 31, 2021

Report #3

Page 1 of 2

		2012	% Change	2013	% Change	2014	% Change	2015	% Change	2016	% Change	2017	% Change	2018	% Change	2019	% Change	2020	% Change	2021
Jan.	Buffalo	272	-7.4%	252	-4.0%	242	-22.7%	188	-2.1%	184	11.4%	205	-8.3%	188	-8.5%	172	8.7%	187	-50.8%	92
	Rochester	152	17.8%	179	-25.1%	134	-1.5%	131	-16.8%	109	-19.3%	88	13.6%	100	-2.0%	98	0.0%	98	-48.0%	51
	WDNY Total Month	424	1.7%	431	-12.8%	376	-15.2%	319	-8.2%	293	0.0%	293	-1.7%	288	-6.3%	270	5.6%	285	-49.8%	143
	WDNY Total YTD	424	1.7%	431	-12.8%	376	-15.2%	319	-8.2%	293	0.0%	293	-1.7%	288	-6.3%	270	5.6%	285	-49.8%	143
Feb.	Buffalo	351	-22.2%	273	-15.4%	231	-20.3%	184	15.2%	212	-11.8%	187	-0.5%	186	9.1%	203	-23.6%	155	-34.2%	102
	Rochester	183	-19.1%	148	-29.7%	104	-28.8%	74	32.4%	98	8.2%	106	-10.4%	95	-8.4%	87	1.1%	88	-13.6%	76
	WDNY Total Month	534	-21.2%	421	-20.4%	335	-23.0%	258	20.2%	310	-5.5%	293	-4.1%	281	3.2%	290	-16.2%	243	-26.7%	178
	WDNY Total YTD	958	-11.1%	852	-16.5%	711	-18.8%	577	4.5%	603	-2.8%	586	-2.9%	569	-1.6%	560	-5.7%	528	-39.2%	321
Mar.	Buffalo	419	-5.5%	396	-20.7%	314	-4.5%	300	-15.0%	255	9.0%	278	-7.2%	258	6.6%	275	-21.8%	215	-29.8%	151
	Rochester	237	-27.4%	172	0.0%	172	-23.8%	131	13.7%	149	-2.7%	145	0.0%	145	-17.2%	120	-3.3%	116	-37.9%	72
	WDNY Total Month	656	-13.4%	568	-14.4%	486	-11.3%	431	-6.3%	404	4.7%	423	-4.7%	403	-2.0%	395	-16.2%	331	-32.6%	223
	WDNY Total YTD	1,614	-12.0%	1,420	-15.7%	1,197	-15.8%	1,008	-0.1%	1,007	0.2%	1,009	-3.7%	972	-1.7%	955	-10.1%	859	-36.7%	544
Apr.	Buffalo	369	-10.3%	331	-0.9%	328	-5.2%	311	-15.4%	263	-1.1%	260	0.8%	262	4.2%	273	-64.8%	96	40.6%	135
	Rochester	221	-10.0%	199	-19.1%	161	8.7%	175	-12.6%	153	-18.3%	125	14.4%	143	-2.8%	139	-60.4%	55	41.8%	78
	WDNY Total Month	590	-10.2%	530	-7.7%	489	-0.6%	486	-14.4%	416	-7.5%	385	5.2%	405	1.7%	412	-63.3%	151	41.1%	213
	WDNY Total YTD	2,204	-11.5%	1,950	-13.5%	1,686	-11.4%	1,494	-4.8%	1,423	-2.0%	1,394	-1.2%	1,377	-0.7%	1,367	-26.1%	1,010	-25.0%	757
May	Buffalo	422	-20.1%	337	-15.4%	285	0.7%	287	-15.3%	243	15.6%	281	-16.0%	236	11.9%	264	-53.0%	124	1.6%	126
	Rochester	214	-4.2%	205	-15.1%	174	-18.4%	142	3.5%	147	-1.4%	145	-20.7%	115	7.8%	124	-46.0%	67	3.0%	69
	WDNY Total Month	636	-14.8%	542	-15.3%	459	-6.5%	429	-9.1%	390	9.2%	426	-17.6%	351	10.5%	388	-50.8%	191	2.1%	195
	WDNY Total YTD	2,840	-12.3%	2,492	-13.9%	2,145	-10.3%	1,923	-5.7%	1,813	0.4%	1,820	-5.1%	1,728	1.6%	1,755	-31.6%	1,201	-20.7%	952
June	Buffalo	364	-11.3%	323	-15.5%	273	-12.5%	239	4.6%	250	-5.2%	237	-8.4%	217	-11.1%	193	-35.8%	124		
	Rochester	156	4.5%	163	-22.7%	126	5.6%	133	3.8%	138	0.7%	139	-12.2%	122	-11.5%	108	-23.1%	83		
	WDNY Total Month	520	-6.5%	486	-17.9%	399	-6.8%	372	4.3%	388	-3.1%	376	-9.8%	339	-11.2%	301	-31.2%	207		
	WDNY Total YTD	3,360	-11.4%	2,978	-14.6%	2,544	-9.8%	2,295	-4.1%	2,201	-0.2%	2,196	-5.9%	2,067	-0.5%	2,056	-31.5%	1,408		

U.S. Bankruptcy Court - Western District of New York
Historical Case Filing Report (All Chapters)

Report #3
Page 2 of 2

Month Ending May 31, 2021

		2012	% Change	2013	% Change	2014	% Change	2015	% Change	2016	% Change	2017	% Change	2018	% Change	2019	% Change	2020	% Change	2021
July	Buffalo	328	-13.7%	283	-17.3%	234	9.4%	257	-30.7%	178	34.8%	240	-11.7%	212	9.0%	231	-33.8%	153		
	Rochester	178	8.4%	193	-26.9%	141	-2.8%	137	-21.9%	107	5.6%	113	-8.8%	103	11.7%	115	-18.3%	94		
	WDNY Total Month	506	-5.9%	476	-21.2%	375	4.8%	394	-27.7%	285	23.9%	353	-10.8%	315	9.8%	346	-28.6%	247		
	WDNY Total YTD	3,866	-10.7%	3,454	-15.5%	2,919	-7.9%	2,689	-7.5%	2,486	2.5%	2,549	-6.6%	2,382	0.8%	2,402	-31.1%	1,655		
Aug	Buffalo	360	-15.6%	304	-23.4%	233	-8.2%	214	9.8%	235	3.4%	243	-8.2%	223	-11.2%	198	-25.8%	147		
	Rochester	179	-20.7%	142	-1.4%	140	-10.7%	126	-12.7%	110	10.0%	121	3.3%	125	-12.0%	110	-32.7%	74		
	WDNY Total Month	539	-17.3%	446	-16.4%	373	-9.1%	340	1.5%	345	5.5%	364	-4.4%	348	-11.5%	308	-28.2%	221		
	WDNY Total YTD	4,405	-11.5%	3,900	-15.6%	3,292	-8.0%	3,029	-6.5%	2,831	2.9%	2,913	-6.3%	2,730	-0.7%	2,710	-30.8%	1,876		
Sep	Buffalo	256	13.3%	290	-2.1%	284	0.0%	284	-18.3%	232	13.8%	264	12.9%	298	8.1%	322	-64.0%	116		
	Rochester	134	15.7%	155	-12.9%	135	-20.0%	108	6.5%	115	1.7%	117	-11.1%	104	1.9%	106	-32.1%	72		
	WDNY Total Month	390	14.1%	445	-5.8%	419	-6.4%	392	-11.5%	347	9.8%	381	5.5%	402	6.5%	428	-56.1%	188		
	WDNY Total YTD	4,795	-9.4%	4,345	-14.6%	3,711	-7.9%	3,421	-7.1%	3,178	3.7%	3,294	-4.9%	3,132	0.2%	3,138	-34.2%	2,064		
Oct	Buffalo	410	-4.6%	391	-24.0%	297	-11.8%	262	18.7%	311	-13.5%	269	21.6%	327	-18.3%	267	-50.9%	131		
	Rochester	162	-14.2%	139	-12.9%	121	9.9%	133	-13.5%	115	3.5%	119	-2.5%	116	4.3%	121	-43.8%	68		
	WDNY Total Month	572	-7.3%	530	-21.1%	418	-5.5%	395	7.8%	426	-8.9%	388	14.2%	443	-12.4%	388	-48.7%	199		
	WDNY Total YTD	5,367	-9.2%	4,875	-15.3%	4,129	-7.6%	3,816	-5.6%	3,604	2.2%	3,682	-2.9%	3,575	-1.4%	3,526	-35.8%	2,263		
Nov	Buffalo	265	-10.9%	236	-2.5%	230	-7.4%	213	-15.0%	181	20.4%	218	-17.0%	181	6.1%	192	-44.8%	106		
	Rochester	160	-16.3%	134	-5.2%	127	0.0%	127	-1.6%	125	-4.0%	120	0.8%	121	-7.4%	112	-29.5%	79		
	WDNY Total Month	425	-12.9%	370	-3.5%	357	-4.8%	340	-10.0%	306	10.5%	338	-10.7%	302	0.7%	304	-39.1%	185		
	WDNY Total YTD	5,792	-9.4%	5,245	-14.5%	4,486	-7.4%	4,156	-5.9%	3,910	2.8%	4,020	-3.6%	3,877	-1.2%	3,830	-36.1%	2,448		
Dec	Buffalo	260	-16.9%	216	-2.8%	210	-10.5%	189	-23.8%	144	27.8%	184	-21.7%	144	18.1%	170	-29.4%	120		
	Rochester	140	-9.3%	127	15.7%	147	-45.6%	80	28.8%	103	-11.7%	91	5.5%	96	-24.0%	73	-19.2%	59		
	WDNY Total Month	400	-14.3%	343	4.1%	357	-24.9%	269	-8.2%	247	11.3%	275	-12.7%	240	1.3%	243	-26.3%	179		
	WDNY Total YTD	6,192	-9.8%	5,588	-13.3%	4,843	-8.7%	4,425	-6.1%	4,157	3.3%	4,295	-4.1%	4,117	-1.1%	4,073	-35.5%	2,627		
		2012	% Change	2013	% Change	2014	% Change	2015	% Change	2016	% Change	2017	% Change	2018	% Change	2019	% Change	2020	% Change	2021
Buffalo Total		4,076	-10.9%	3,632	-13.0%	3,161	-7.4%	2,928	-8.2%	2,688	6.6%	2,866	-4.7%	2,732	1.0%	2,760	-39.3%	1,674		606
Rochester Total		2,116	-7.6%	1,956	-14.0%	1,682	-11.0%	1,497	-1.9%	1,469	-2.7%	1,429	-3.1%	1,385	-5.2%	1,313	-27.4%	953		346
WDNY Total		6,192	-9.8%	5,588	-13.3%	4,843	-8.6%	4,425	-6.1%	4,157	3.3%	4,295	-4.1%	4,117	-1.1%	4,073	-35.5%	2,627		952

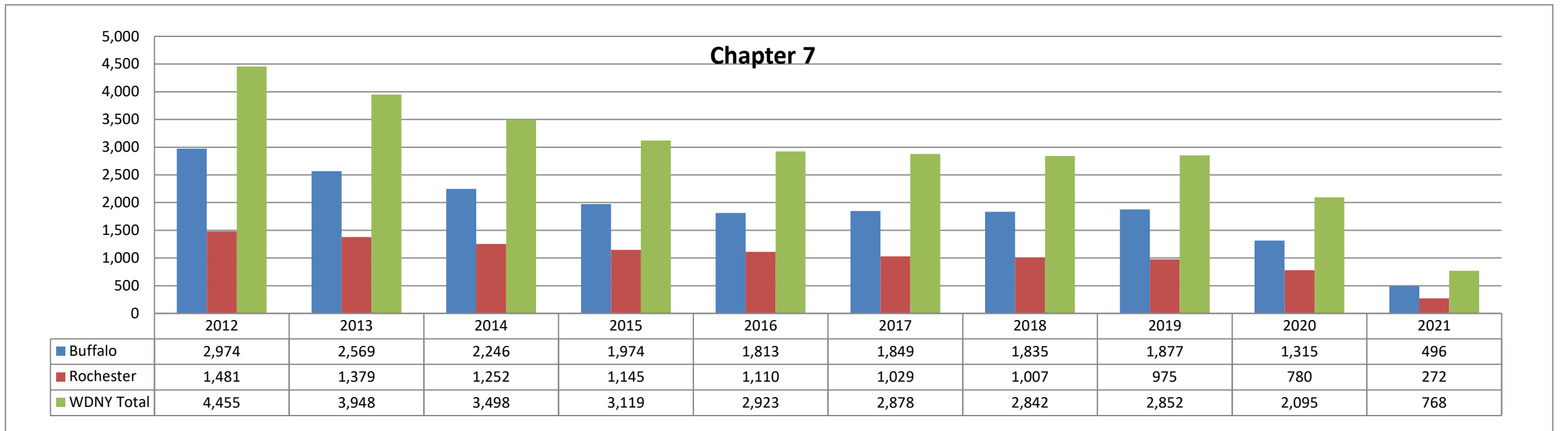
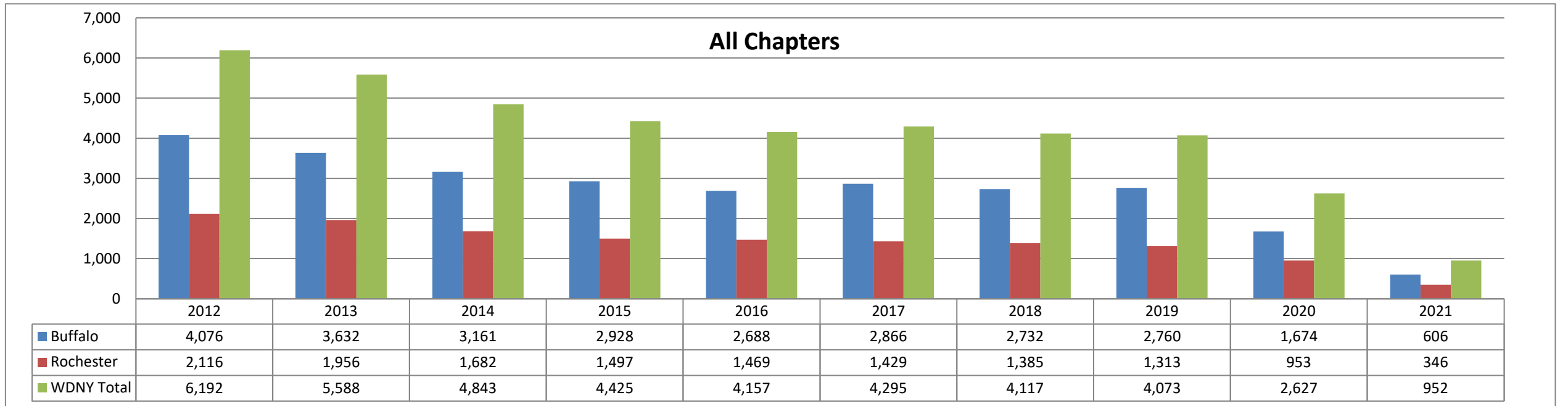
		Chapter 7	Chapter 13	Chapter 11	Chapter 12/15	Cases Filed by Month	Cases Filed YTD	Adversary Cases				Case Closings		
								Pending Prior Month	New	Closed Current Month	Net Pending	Cases Closed 2020	Cases Closed 2021	% change
Jan.	Chief Judge Bucki	43	12	0	0	55	55	29	11	1	39	165	83	-49.7%
	Judge Kaplan	18	5	0	0	23	23	61	0	6	55	82	63	-23.2%
	Judge Warren(Buffalo)	13	1	0	0	14	14	0	0	0	0	16	15	-6.3%
	Judge Warren(Rochester)	41	9	1	0	51	51	6	0	0	6	129	77	-40.3%
	Buffalo Total	74	18	0	0	92	92	90	11	7	94	263	161	-38.8%
	Rochester Total	41	9	1	0	51	51	6	0	0	6	129	77	-40.3%
	WDNY Total	115	27	1	0	143	143	96	11	7	100	392	238	-39.3%
Feb.	Chief Judge Bucki	56	11	1	0	68	123	39	1	1	39	100	70	-30.0%
	Judge Kaplan	26	3	0	0	29	52	55	0	1	54	71	37	-47.9%
	Judge Warren(Buffalo)	4	1	0	0	5	19	0	0	0	0	23	6	-73.9%
	Judge Warren(Rochester)	56	20	0	0	76	127	6	0	2	4	126	92	-27.0%
	Buffalo Total	86	15	1	0	102	194	94	0	2	93	194	113	-41.8%
	Rochester Total	56	20	0	0	76	127	6	0	2	4	126	92	-27.0%
	WDNY Total	142	35	1	0	178	321	100	0	4	97	320	205	-35.9%
Mar.	Chief Judge Bucki	86	19	0	0	105	228	39	6	2	43	148	101	-31.8%
	Judge Kaplan	35	5	0	0	40	92	54	0	8	46	86	63	-26.7%
	Judge Warren(Buffalo)	6	0	0	0	6	25	0	0	0	0	24	3	-87.5%
	Judge Warren(Rochester)	53	18	1	0	72	199	4	0	0	4	108	77	-28.7%
	Buffalo Total	127	24	0	0	151	345	93	6	10	89	258	167	-35.3%
	Rochester Total	53	18	1	0	72	199	4	0	0	4	108	77	-28.7%
	WDNY Total	180	42	1	0	223	544	97	6	10	93	366	244	-33.3%
Apr.	Chief Judge Bucki	66	18	1	0	85	313	43	1	3	41	115	105	-8.7%
	Judge Kaplan	27	6	0	0	33	125	46	0	3	43	61	76	24.6%
	Judge Warren(Buffalo)	17	0	0	0	17	42	0	0	0	0	18	20	11.1%
	Judge Warren(Rochester)	68	10	0	0	78	277	4	0	2	2	98	82	-16.3%
	Buffalo Total	110	24	1	0	135	480	89	1	6	84	194	201	3.6%
	Rochester Total	68	10	0	0	78	277	4	0	2	2	98	82	-16.3%
	WDNY Total	178	34	1	0	213	757	93	1	8	86	292	283	-3.1%

U.S. Bankruptcy Court - Western District of New York
 Caseload by Judge, Division & District
 Month Ending May 31, 2021

Report # 4
 Page 2 of 2

		Chapter 7	Chapter 13	Chapter 11	Chapter 12/15	Cases Filed by Month	Cases Filed YTD	Adversary Cases				Case Closings		
								Pending Prior Month	New	Closed Current Month	Net Pending	Cases Closed 2020	Cases Closed 2021	% change
May	Chief Judge Bucki	71	17	0	0	88	401	41	1	5	37	73	57	-21.9%
	Judge Kaplan	24	8	1	0	33	158	43	0	0	43	47	34	-27.7%
	Judge Warren(Buffalo)	4	1	0	0	5	47	0	0	0	0	9	9	0.0%
	Judge Warren(Rochester)	54	14	0	1	69	346	2	0	0	2	89	59	-33.7%
	Buffalo Total	99	26	1	0	126	606	84	1	5	80	129	100	-22.5%
	Rochester Total	54	14	0	1	69	346	2	0	0	2	89	59	-33.7%
	WDNY Total	153	40	1	1	195	952	86	1	5	82	218	159	-27.1%

Year to Date	Chapter 7	Chapter 13	Chapter 11	Chapter 12 & 15	YTD Totals All Chapters	Adversary Cases YTD			Case Closings YTD		
						New	Closed	Net Pending	Cases Closed 2020	Cases Closed 2021	% change
Chief Judge Bucki YTD	322	77	2	0	401	20	12	37	601	416	-30.8%
Judge Kaplan YTD	130	27	1	0	158	0	18	43	347	273	-21.3%
Judge Warren (Buff & Roch) YTD	316	74	2	1	393	0	0	2	640	440	-31.3%
Judge Warren (Buffalo) YTD	44	3	0	0	47	0	0	0	90	53	-41.1%
Judge Warren (Rochester) YTD	272	71	2	1	346	0	4	2	550	387	-29.6%
Buffalo Total YTD	496	107	3	0	606	19	30	80	1,038	742	-28.5%
Rochester Total YTD	272	71	2	1	346	0	4	2	550	387	-29.6%
WDNY Totals YTD	768	178	5	1	952	19	34	82	1,588	1,129	-28.9%

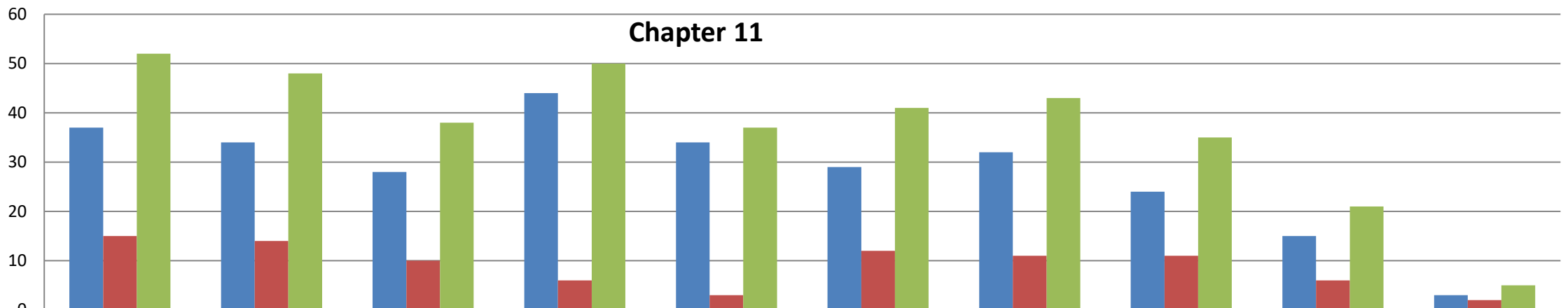


Chapter 13 (includes Chapter 12 & 15)



	2012	2013	2014	2015	2016	2017	2018	2019	2020	2021
Buffalo	1,065	1,029	887	909	841	988	865	859	344	107
Rochester	620	563	420	347	356	388	367	327	168	72
WDNY Totals	1,685	1,592	1,307	1,256	1,197	1,376	1,232	1,186	512	179

Chapter 11



	2012	2013	2014	2015	2016	2017	2018	2019	2020	2021
Buffalo	37	34	28	44	34	29	32	24	15	3
Rochester	15	14	10	6	3	12	11	11	6	2
WDNY Totals	52	48	38	50	37	41	43	35	21	5