

		Cases Filed 2022	Cases Filed 2023	% change same month	% change YTD	Chapter 7				Chapter 13				Chapter 11	Ch 12 & 15
						¹ Non-Bus.	² Business	³ Other	Total Ch. 7	¹ Non-Bus.	² Business	³ Other	Total Ch.13		
Jan.	Buffalo	82	78	-4.9%	-4.9%	41	2	0	43	32	1	0	33	2	0
	Rochester	45	56	24.4%	24.4%	33	0	0	33	22	0	0	22	1	0
	WDNY Total Month	127	134	5.5%	5.5%	74	2	0	76	54	1	0	55	3	0
	WDNY Total YTD	127	134			74	2	0	76	54	1	0	55	3	0
Feb.	Buffalo	93	84	-9.7%	-7.4%	58	0	0	58	26	0	0	26	0	0
	Rochester	48	39	-18.8%	2.2%	23	0	0	23	14	0	1	15	1	0
	WDNY Total Month	141	123	-12.8%	-4.1%	81	0	0	81	40	0	1	41	1	0
	WDNY Total YTD	268	257			155	2	0	157	94	1	1	96	4	0
Mar.	Buffalo	132	138	4.5%	-2.3%	92	3	0	95	43	0	0	43	0	0
	Rochester	65	50	-23.1%	-8.2%	33	2	1	36	14	0	0	14	0	0
	WDNY Total Month	197	188	-4.6%	-4.3%	125	5	1	131	57	0	0	57	0	0
	WDNY Total YTD	465	445			280	7	1	288	151	1	1	153	4	0
Apr.	Buffalo	119	110	-7.6%	-3.8%	79	1	0	80	27	0	0	27	3	0
	Rochester	61	56	-8.2%	-8.2%	39	3	0	42	14	0	0	14	0	0
	WDNY Total Month	180	166	-7.8%	-5.3%	118	4	0	122	41	0	0	41	3	0
	WDNY Total YTD	645	611			398	11	1	410	192	1	1	194	7	0
May	Buffalo	104	134	28.8%	2.6%	92	2	0	94	40	0	0	40	0	0
	Rochester	60	72	20.0%	-2.2%	49	1	1	51	17	2	0	19	2	0
	WDNY Total Month	164	206	25.6%	1.0%	141	3	1	145	57	2	0	59	2	0
	WDNY Total YTD	809	817			539	14	2	555	249	3	1	253	9	0

¹ Primary "Nature of Debt" is consumer debt.

² Primary "Nature of Debt" is business debt.

³ Primary "Nature of Debt" is other.

U.S. Bankruptcy Court - Western District of New York

Case Filing Report

Month Ending May 31, 2023

Report # 1

Page 2 of 2

Year to Date	Cases Filed 2022	Cases Filed 2023	% change	Chapter 7 YTD				Chapter 13 YTD				Chapter 11 YTD	Chapter 12 & 15 YTD
				¹ Non-Bus.	² Business	³ Other	Total Ch. 7	¹ Non-Bus.	² Business	³ Other	Total Ch.13		
Buffalo YTD	530	544	2.6%	362	8	0	370	168	1	0	169	5	0
Rochester YTD	279	273	-2.2%	177	6	2	185	81	2	1	84	4	0
WDNY YTD	809	817	1.0%	539	14	2	555	249	3	1	253	9	0

¹ Primary "Nature of Debt" is consumer debt.

² Primary "Nature of Debt" is business debt.

³ Primary "Nature of Debt" is other.

U.S. Bankruptcy Court - Western District of New York

Case Filings by County

Month Ending May 31, 2023

Report # 2

Page 1 of 1

Counties in Buffalo Division	Jan.	Feb.	March	April	May	June	July	Aug.	Sept.	Oct.	Nov.	Dec.	County Totals 2023 YTD	% chg from 2022 YTD
(Olean) Allegany	1	3	4	2	2								12	71.4%
(Olean) Cattaraugus	1	4	5	6	4								20	17.6%
Chautauqua	2	6	11	1	10								30	-37.5%
Erie	61	48	83	71	84								347	10.5%
(Batavia) Genesee	2	2	3	7	6								20	-13.0%
Niagara	9	15	26	20	23								93	3.3%
(Batavia) Orleans	2	1	4	2	2								11	-31.3%
(Batavia) Wyoming	0	5	2	1	3								11	-26.7%
Out of County	0	0	0	0	0								0	
2023 Totals	78	84	138	110	134	0	0	0	0	0	0	0	544	2.6%

Counties in Rochester Division	Jan.	Feb.	March	April	May	June	July	Aug.	Sept.	Oct.	Nov.	Dec.	County Totals 2023 YTD	% chg from 2022 YTD
(WG) Chemung	1	3	1	5	6								16	-5.9%
Livingston	2	0	3	2	3								10	-9.1%
Monroe	42	28	33	33	44								180	4.0%
Ontario	2	3	4	4	5								18	-33.3%
(WG) Schuyler	1	0	3	2	3								9	350.0%
Seneca	0	1	1	1	3								6	100.0%
(WG) Steuben	5	1	4	5	4								19	11.8%
Wayne	2	3	1	3	4								13	-40.9%
Yates	1	0	0	1	0								2	-71.4%
Out of County	0	0	0	0	0								0	
2023 Totals	56	39	50	56	72	0	0	0	0	0	0	0	273	-2.2%

WDNY Combined Totals	134	123	188	166	206	0	0	0	0	0	0	0	817	1.0%
-----------------------------	------------	------------	------------	------------	------------	----------	----------	----------	----------	----------	----------	----------	------------	-------------

U.S. Bankruptcy Court - Western District of New York

Historical Case Filing Report (All Chapters)

Month Ending May 31, 2023

Report #3

Page 1 of 2

		2014	% Change	2015	% Change	2016	% Change	2017	% Change	2018	% Change	2019	% Change	2020	% Change	2021	% Change	2022	% Change	2023
Jan.	Buffalo	242	-22.7%	188	-2.1%	184	11.4%	205	-8.3%	188	-8.5%	172	8.7%	187	-50.8%	92	-10.9%	82	-4.9%	78
	Rochester	134	-1.5%	131	-16.8%	109	-19.3%	88	13.6%	100	-2.0%	98	0.0%	98	-48.0%	51	-11.8%	45	24.4%	56
	WDNY Total Month	376	-15.2%	319	-8.2%	293	0.0%	293	-1.7%	288	-6.3%	270	5.6%	285	-49.8%	143	-11.2%	127	5.5%	134
	WDNY Total YTD	376	-15.2%	319	-8.2%	293	0.0%	293	-1.7%	288	-6.3%	270	5.6%	285	-49.8%	143	-11.2%	127	5.5%	134
Feb.	Buffalo	231	-20.3%	184	15.2%	212	-11.8%	187	-0.5%	186	9.1%	203	-23.6%	155	-34.2%	102	-8.8%	93	-9.7%	84
	Rochester	104	-28.8%	74	32.4%	98	8.2%	106	-10.4%	95	-8.4%	87	1.1%	88	-13.6%	76	-36.8%	48	-18.8%	39
	WDNY Total Month	335	-23.0%	258	20.2%	310	-5.5%	293	-4.1%	281	3.2%	290	-16.2%	243	-26.7%	178	-20.8%	141	-12.8%	123
	WDNY Total YTD	711	-18.8%	577	4.5%	603	-2.8%	586	-2.9%	569	-1.6%	560	-5.7%	528	-39.2%	321	-16.5%	268	-4.1%	257
Mar.	Buffalo	314	-4.5%	300	-15.0%	255	9.0%	278	-7.2%	258	6.6%	275	-21.8%	215	-29.8%	151	-12.6%	132	4.5%	138
	Rochester	172	-23.8%	131	13.7%	149	-2.7%	145	0.0%	145	-17.2%	120	-3.3%	116	-37.9%	72	-9.7%	65	-23.1%	50
	WDNY Total Month	486	-11.3%	431	-6.3%	404	4.7%	423	-4.7%	403	-2.0%	395	-16.2%	331	-32.6%	223	-11.7%	197	-4.6%	188
	WDNY Total YTD	1,197	-15.8%	1,008	-0.1%	1,007	0.2%	1,009	-3.7%	972	-1.7%	955	-10.1%	859	-36.7%	544	-14.5%	465	-4.3%	445
Apr.	Buffalo	328	-5.2%	311	-15.4%	263	-1.1%	260	0.8%	262	4.2%	273	-64.8%	96	40.6%	135	-11.9%	119	-7.6%	110
	Rochester	161	8.7%	175	-12.6%	153	-18.3%	125	14.4%	143	-2.8%	139	-60.4%	55	41.8%	78	-21.8%	61	-8.2%	56
	WDNY Total Month	489	-0.6%	486	-14.4%	416	-7.5%	385	5.2%	405	1.7%	412	-63.3%	151	41.1%	213	-15.5%	180	-7.8%	166
	WDNY Total YTD	1,686	-11.4%	1,494	-4.8%	1,423	-2.0%	1,394	-1.2%	1,377	-0.7%	1,367	-26.1%	1,010	-25.0%	757	-14.8%	645	-5.3%	611
May	Buffalo	285	0.7%	287	-15.3%	243	15.6%	281	-16.0%	236	11.9%	264	-53.0%	124	1.6%	126	-17.5%	104	28.8%	134
	Rochester	174	-18.4%	142	3.5%	147	-1.4%	145	-20.7%	115	7.8%	124	-46.0%	67	3.0%	69	-13.0%	60	20.0%	72
	WDNY Total Month	459	-6.5%	429	-9.1%	390	9.2%	426	-17.6%	351	10.5%	388	-50.8%	191	2.1%	195	-15.9%	164	25.6%	206
	WDNY Total YTD	2,145	-10.3%	1,923	-5.7%	1,813	0.4%	1,820	-5.1%	1,728	1.6%	1,755	-31.6%	1,201	-20.7%	952	-15.0%	809	1.0%	817
June	Buffalo	273	-12.5%	239	4.6%	250	-5.2%	237	-8.4%	217	-11.1%	193	-35.8%	124	-7.3%	115	0.9%	116		
	Rochester	126	5.6%	133	3.8%	138	0.7%	139	-12.2%	122	-11.5%	108	-23.1%	83	-18.1%	68	-29.4%	48		
	WDNY Total Month	399	-6.8%	372	4.3%	388	-3.1%	376	-9.8%	339	-11.2%	301	-31.2%	207	-11.6%	183	-10.4%	164		
	WDNY Total YTD	2,544	-9.8%	2,295	-4.1%	2,201	-0.2%	2,196	-5.9%	2,067	-0.5%	2,056	-31.5%	1,408	-19.4%	1,135	-14.3%	973		

U.S. Bankruptcy Court - Western District of New York
 Historical Case Filing Report (All Chapters)
 Month Ending May 31, 2023

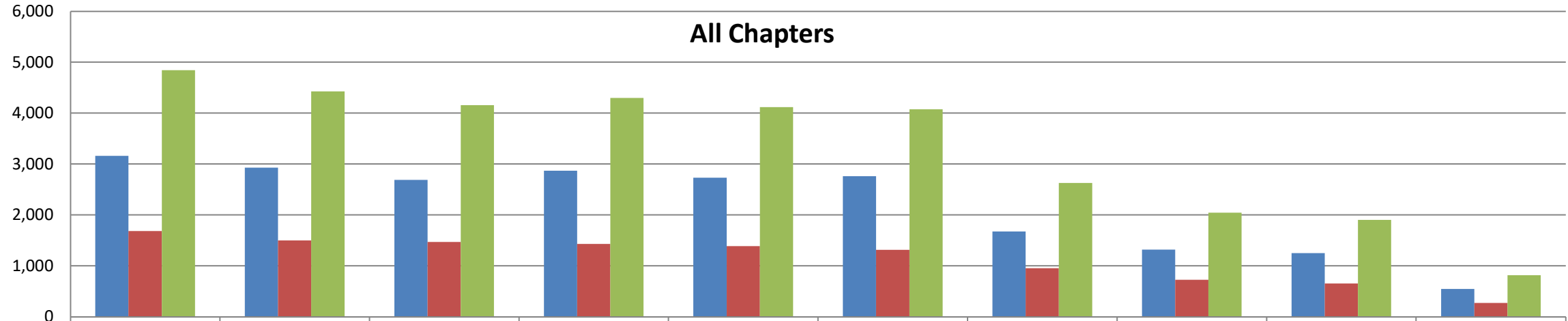
		2014	% Change	2015	% Change	2016	% Change	2017	% Change	2018	% Change	2019	% Change	2020	% Change	2021	% Change	2022	% Change	2023
July	Buffalo	234	9.4%	257	-30.7%	178	34.8%	240	-11.7%	212	9.0%	231	-33.8%	153	-13.7%	132	-29.5%	93		
	Rochester	141	-2.8%	137	-21.9%	107	5.6%	113	-8.8%	103	11.7%	115	-18.3%	94	-27.7%	68	-29.4%	48		
	WDNY Total Month	375	4.8%	394	-27.7%	285	23.9%	353	-10.8%	315	9.8%	346	-28.6%	247	-19.0%	200	-29.5%	141		
	WDNY Total YTD	2,919	-7.9%	2,689	-7.5%	2,486	2.5%	2,549	-6.6%	2,382	0.8%	2,402	-31.1%	1,655	-19.3%	1,335	-16.6%	1,114		
Aug	Buffalo	233	-8.2%	214	9.8%	235	3.4%	243	-8.2%	223	-11.2%	198	-25.8%	147	-22.4%	114	-31.6%	78		
	Rochester	140	-10.7%	126	-12.7%	110	10.0%	121	3.3%	125	-12.0%	110	-32.7%	74	-20.3%	59	-18.6%	48		
	WDNY Total Month	373	-9.1%	340	1.5%	345	5.5%	364	-4.4%	348	-11.5%	308	-28.2%	221	-21.7%	173	-27.2%	126		
	WDNY Total YTD	3,292	-8.0%	3,029	-6.5%	2,831	2.9%	2,913	-6.3%	2,730	-0.7%	2,710	-30.8%	1,876	-19.6%	1,508	-17.8%	1,240		
Sep	Buffalo	284	0.0%	284	-18.3%	232	13.8%	264	12.9%	298	8.1%	322	-64.0%	116	-8.6%	106	3.8%	110		
	Rochester	135	-20.0%	108	6.5%	115	1.7%	117	-11.1%	104	1.9%	106	-32.1%	72	-19.4%	58	3.4%	60		
	WDNY Total Month	419	-6.4%	392	-11.5%	347	9.8%	381	5.5%	402	6.5%	428	-56.1%	188	-12.8%	164	3.7%	170		
	WDNY Total YTD	3,711	-7.9%	3,421	-7.1%	3,178	3.7%	3,294	-4.9%	3,132	0.2%	3,138	-34.2%	2,064	-19.0%	1,672	-15.7%	1,410		
Oct	Buffalo	297	-11.8%	262	18.7%	311	-13.5%	269	21.6%	327	-18.3%	267	-50.9%	131	-34.4%	86	74.4%	150		
	Rochester	121	9.9%	133	-13.5%	115	3.5%	119	-2.5%	116	4.3%	121	-43.8%	68	-44.1%	38	55.3%	59		
	WDNY Total Month	418	-5.5%	395	7.8%	426	-8.9%	388	14.2%	443	-12.4%	388	-48.7%	199	-37.7%	124	68.5%	209		
	WDNY Total YTD	4,129	-7.6%	3,816	-5.6%	3,604	2.2%	3,682	-2.9%	3,575	-1.4%	3,526	-35.8%	2,263	-20.6%	1,796	-9.9%	1,619		
Nov	Buffalo	230	-7.4%	213	-15.0%	181	20.4%	218	-17.0%	181	6.1%	192	-44.8%	106	-16.0%	89	-1.1%	88		
	Rochester	127	0.0%	127	-1.6%	125	-4.0%	120	0.8%	121	-7.4%	112	-29.5%	79	-43.0%	45	24.4%	56		
	WDNY Total Month	357	-4.8%	340	-10.0%	306	10.5%	338	-10.7%	302	0.7%	304	-39.1%	185	-27.6%	134	7.5%	144		
	WDNY Total YTD	4,486	-7.4%	4,156	-5.9%	3,910	2.8%	4,020	-3.6%	3,877	-1.2%	3,830	-36.1%	2,448	-21.2%	1,930	-8.7%	1,763		
Dec	Buffalo	210	-10.5%	189	-23.8%	144	27.8%	184	-21.7%	144	18.1%	170	-29.4%	120	-42.5%	69	23.2%	85		
	Rochester	147	-45.6%	80	28.8%	103	-11.7%	91	5.5%	96	-24.0%	73	-19.2%	59	-22.0%	46	19.6%	55		
	WDNY Total Month	357	-24.9%	269	-8.2%	247	11.3%	275	-12.7%	240	1.3%	243	-26.3%	179	-35.8%	115	21.7%	140		
	WDNY Total YTD	4,843	-8.7%	4,425	-6.1%	4,157	3.3%	4,295	-4.1%	4,117	-1.1%	4,073	-35.5%	2,627	-22.2%	2,045	-6.9%	1,903		
		2014	% Change	2015	% Change	2016	% Change	2017	% Change	2018	% Change	2019	% Change	2020	% Change	2021	% Change	2022	% Change	2023
Buffalo Total		3,161	-7.4%	2,928	-8.2%	2,688	6.6%	2,866	-4.7%	2,732	1.0%	2,760	-39.3%	1,674	-21.3%	1,317	-5.1%	1,250		
Rochester Total		1,682	-11.0%	1,497	-1.9%	1,469	-2.7%	1,429	-3.1%	1,385	-5.2%	1,313	-27.4%	953	-23.6%	728	-10.3%	653		
WDNY Total		4,843	-8.6%	4,425	-6.1%	4,157	3.3%	4,295	-4.1%	4,117	-1.1%	4,073	-35.5%	2,627	-22.2%	2,045	-6.9%	1,903		

		Chapter 7	Chapter 13	Chapter 11	Chapter 12/15	Cases Filed by Month	Cases Filed YTD	Adversary Cases				Case Closings		
								Pending Prior Month	New	Closed Current Month	Net Pending	Cases Closed 2022	Cases Closed 2023	% change
Jan.	Chief Judge Bucki	38	27	2	0	67	67	13	1	0	14	81	117	44.4%
	Judge Kaplan	0	0	0	0	0	0	18	0	0	18	15	1	-93.3%
	Judge Warren(Buffalo)	5	6	0	0	11	11	0	0	0	0	49	29	-40.8%
	Judge Warren(Rochester)	33	22	1	0	56	56	22	4	2	24	64	62	-3.1%
	Buffalo Total	43	33	2	0	78	78	31	1	0	32	145	147	1.4%
	Rochester Total	33	22	1	0	56	56	22	4	2	24	64	62	-3.1%
	WDNY Total	76	55	3	0	134	134	53	5	2	56	209	209	0.0%
Feb.	Chief Judge Bucki	41	20	0	0	61	128	14	0	2	12	86	78	-9.3%
	Judge Kaplan	0	0	0	0	0	0	18	0	0	18	14	0	-100.0%
	Judge Warren(Buffalo)	17	6	0	0	23	34	0	0	0	0	14	15	7.1%
	Judge Warren(Rochester)	23	15	1	0	39	95	24	0	3	21	36	55	52.8%
	Buffalo Total	58	26	0	0	84	162	32	0	5	30	114	93	-18.4%
	Rochester Total	23	15	1	0	39	95	24	0	3	21	36	55	52.8%
	WDNY Total	81	41	1	0	123	257	56	0	8	51	150	148	-1.3%
Mar.	Chief Judge Bucki	68	35	0	0	103	231	12	5	1	16	81	89	9.9%
	Judge Kaplan	0	0	0	0	0	0	18	0	1	17	8	1	-87.5%
	Judge Warren(Buffalo)	27	8	0	0	35	69	0	0	0	0	26	46	76.9%
	Judge Warren(Rochester)	36	14	0	0	50	145	21	5	5	21	101	80	-20.8%
	Buffalo Total	95	43	0	0	138	300	30	10	7	33	115	136	18.3%
	Rochester Total	36	14	0	0	50	145	21	5	5	21	101	80	-20.8%
	WDNY Total	131	57	0	0	188	445	51	15	12	54	216	216	0.0%
Apr.	Chief Judge Bucki	60	17	3	0	80	311	16	1	0	17	93	84	-9.7%
	Judge Kaplan	0	0	0	0	0	0	17	0	0	17	2	1	-50.0%
	Judge Warren(Buffalo)	20	10	0	0	30	99	0	0	0	0	24	16	-33.3%
	Judge Warren(Rochester)	42	14	0	0	56	201	21	1	2	20	74	61	-17.6%
	Buffalo Total	80	27	3	0	110	410	33	2	2	34	119	101	-15.1%
	Rochester Total	42	14	0	0	56	201	21	1	2	20	74	61	-17.6%
	WDNY Total	122	41	3	0	166	611	54	3	4	54	193	162	-16.1%

		Chapter 7	Chapter 13	Chapter 11	Chapter 12/15	Cases Filed by Month	Cases Filed YTD	Adversary Cases				Case Closings		
								Pending Prior Month	New	Closed Current Month	Net Pending	Cases Closed 2022	Cases Closed 2023	% change
May	Chief Judge Bucki	69	31	0	0	100	411	17	1	1	17	91	107	17.6%
	Judge Kaplan	0	0	0	0	0	0	17	0	0	17	1	0	-100.0%
	Judge Warren(Buffalo)	25	9	0	0	34	133	0	0	0	0	34	32	-5.9%
	Judge Warren(Rochester)	51	19	2	0	72	273	20	0	5	15	42	69	64.3%
	Buffalo Total	94	40	0	0	134	544	34	1	6	34	126	139	10.3%
	Rochester Total	51	19	2	0	72	273	20	0	5	15	42	69	64.3%
	WDNY Total	145	59	2	0	206	817	54	1	11	49	168	208	23.8%

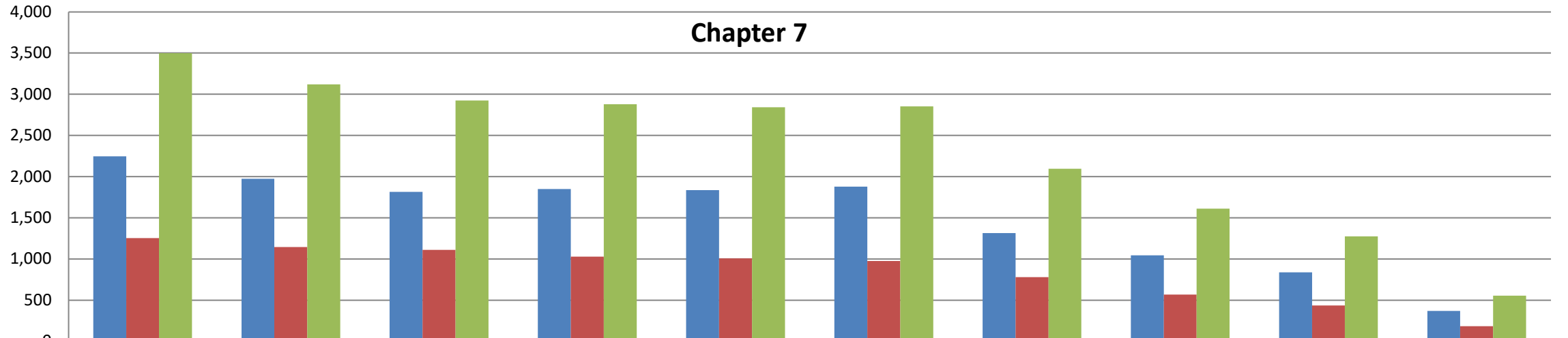
Year to Date	Chapter 7	Chapter 13	Chapter 11	Chapter 12 & 15	YTD Totals All Chapters	Adversary Cases YTD			Case Closings YTD		
						New	Closed	Net Pending	Cases Closed 2022	Cases Closed 2023	% change
Chief Judge Bucki YTD	276	130	5	0	411	8	4	17	432	475	10.0%
Judge Kaplan YTD	0	0	0	0	0	0	1	17	40	3	-92.5%
Judge Warren (Buff & Roch) YTD	279	123	4	0	406	10	17	15	464	465	0.2%
Judge Warren (Buffalo) YTD	94	39	0	0	133	0	0	0	147	138	-6.1%
Judge Warren (Rochester) YTD	185	84	4	0	273	10	17	15	317	327	3.2%
Buffalo Total YTD	370	169	5	0	544	14	20	34	619	616	-0.5%
Rochester Total YTD	185	84	4	0	273	10	17	15	317	327	3.2%
WDNY Totals YTD	555	253	9	0	817	24	37	49	936	943	0.7%

All Chapters



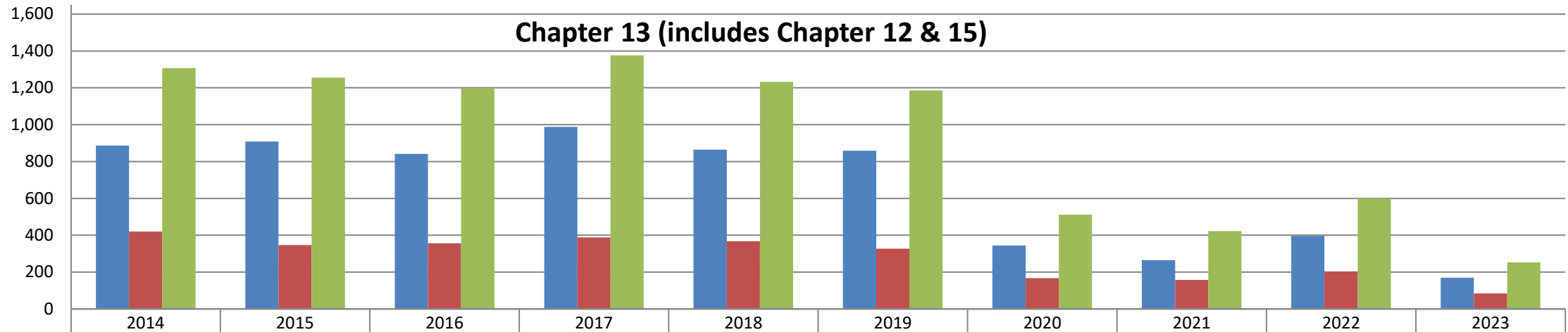
	2014	2015	2016	2017	2018	2019	2020	2021	2022	2023
■ Buffalo	3,161	2,928	2,688	2,866	2,732	2,760	1,674	1,317	1,250	544
■ Rochester	1,682	1,497	1,469	1,429	1,385	1,313	953	728	653	273
■ WDNY Total	4,843	4,425	4,157	4,295	4,117	4,073	2,627	2,045	1,903	817

Chapter 7



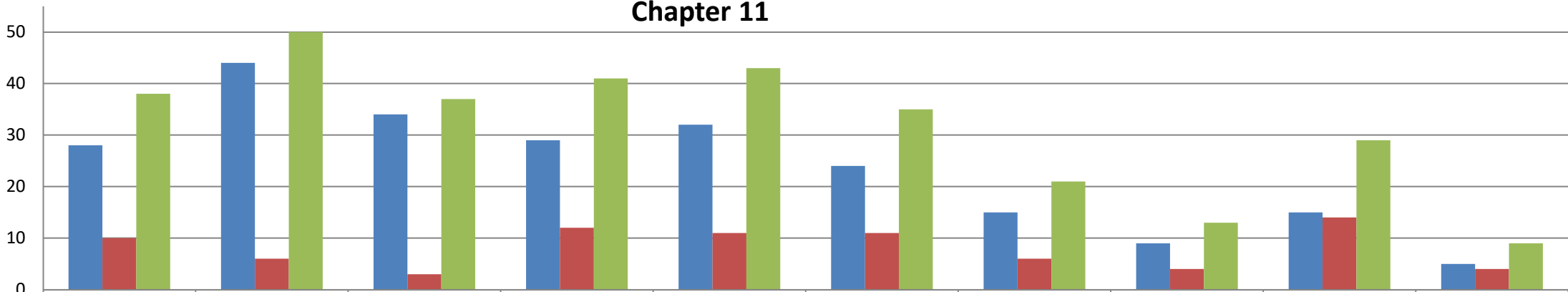
	2014	2015	2016	2017	2018	2019	2020	2021	2022	2023
■ Buffalo	2,246	1,974	1,813	1,849	1,835	1,877	1,315	1,043	838	370
■ Rochester	1,252	1,145	1,110	1,029	1,007	975	780	567	436	185
■ WDNY Total	3,498	3,119	2,923	2,878	2,842	2,852	2,095	1,610	1,274	555

Chapter 13 (includes Chapter 12 & 15)



	2014	2015	2016	2017	2018	2019	2020	2021	2022	2023
Buffalo	887	909	841	988	865	859	344	265	397	169
Rochester	420	347	356	388	367	327	167	157	203	84
WDNY Totals	1,307	1,256	1,197	1,376	1,232	1,186	511	422	600	253

Chapter 11



	2014	2015	2016	2017	2018	2019	2020	2021	2022	2023
Buffalo	28	44	34	29	32	24	15	9	15	5
Rochester	10	6	3	12	11	11	6	4	14	4
WDNY Totals	38	50	37	41	43	35	21	13	29	9