

Month Ending November 30, 2018

		Cases Filed 2017	Cases Filed 2018	% change same month	% change YTD	Chapter 7				Chapter 13				Chapter 11	Ch 12 & 15
						<sup>1</sup> Non-Bus.	<sup>2</sup> Business	<sup>3</sup> Other	Total Ch. 7	<sup>1</sup> Non-Bus.	<sup>2</sup> Business	<sup>3</sup> Other	Total Ch.13		
Jan.	Buffalo	205	188	-8.3%	-8.3%	121	4	1	126	61	1	0	62	0	0
	Rochester	88	100	13.6%	13.6%	70	3	0	73	22	2	0	24	3	0
	WDNY Total Month	293	288	-1.7%	-1.7%	191	7	1	199	83	3	0	86	3	0
	WDNY Total YTD	293	288			191	7	1	199	83	3	0	86	3	0
Feb.	Buffalo	187	186	-0.5%	-4.6%	119	2	0	121	63	1	0	64	0	1
	Rochester	106	95	-10.4%	0.5%	63	0	0	63	27	3	0	30	2	0
	WDNY Total Month	293	281	-4.1%	-2.9%	182	2	0	184	90	4	0	94	2	1
	WDNY Total YTD	586	569			373	9	1	383	173	7	0	180	5	1
Mar.	Buffalo	278	258	-7.2%	-5.7%	191	3	1	195	61	2	0	63	0	0
	Rochester	145	145	0.0%	0.3%	102	6	1	109	36	0	0	36	0	0
	WDNY Total Month	423	403	-4.7%	-3.7%	293	9	2	304	97	2	0	99	0	0
	WDNY Total YTD	1,009	972			666	18	3	687	270	9	0	279	5	1
Apr.	Buffalo	260	262	0.8%	-3.9%	175	2	0	177	74	0	0	74	10	1
	Rochester	125	143	14.4%	4.1%	107	4	0	111	31	1	0	32	0	0
	WDNY Total Month	385	405	5.2%	-1.2%	282	6	0	288	105	1	0	106	10	1
	WDNY Total YTD	1,394	1,377			948	24	3	975	375	10	0	385	15	2
May	Buffalo	281	236	-16.0%	-6.7%	173	3	3	179	55	0	0	55	2	0
	Rochester	145	115	-20.7%	-1.8%	75	5	0	80	34	0	0	34	0	1
	WDNY Total Month	426	351	-17.6%	-5.1%	248	8	3	259	89	0	0	89	2	1
	WDNY Total YTD	1,820	1,728			1,196	32	6	1,234	464	10	0	474	17	3
June	Buffalo	237	217	-8.4%	-7.0%	140	2	0	142	71	0	0	71	3	1
	Rochester	139	122	-12.2%	-3.7%	92	3	0	95	26	0	1	27	0	0
	WDNY Total Month	376	339	-9.8%	-5.9%	232	5	0	237	97	0	1	98	3	1
	WDNY Total YTD	2,196	2,067			1,428	37	6	1,471	561	10	1	572	20	4
July	Buffalo	240	212	-11.7%	-7.6%	147	4	0	151	57	0	0	57	4	0
	Rochester	113	103	-8.8%	-4.4%	68	4	2	74	27	1	0	28	1	0
	WDNY Total Month	353	315	-10.8%	-6.6%	215	8	2	225	84	1	0	85	5	0
	WDNY Total YTD	2,549	2,382			1,643	45	8	1,696	645	11	1	657	25	4

<sup>1</sup> Primary "Nature of Debt" is consumer debt.

<sup>2</sup> Primary "Nature of Debt" is business debt.

<sup>3</sup> Primary "Nature of Debt" is other.

U.S. Bankruptcy Court - Western District of New York  
Case Filing Report

Report # 1  
Page 2 of 2

Month Ending November 30, 2018

		Cases Filed 2017	Cases Filed 2018	% change same month	% change YTD	Chapter 7				Chapter 13				Chapter 11	Ch. 12 & 15
						<sup>1</sup> Non-Bus.	<sup>2</sup> Business	<sup>3</sup> Other	Total Ch. 7	<sup>1</sup> Non-Bus.	<sup>2</sup> Business	<sup>3</sup> Other	Total Ch.13		
Aug.	Buffalo	243	223	-8.2%	-7.7%	147	3	0	150	72	0	0	72	1	0
	Rochester	121	125	3.3%	-3.5%	79	3	0	82	39	2	0	41	1	1
	WDNY Total Month	364	348	-4.4%	-6.3%	226	6	0	232	111	2	0	113	2	1
	WDNY Total YTD	2,913	2,730			1,869	51	8	1,928	756	13	1	770	27	5
Sep.	Buffalo	264	298	12.9%	-5.2%	158	4	0	162	129	3	0	132	4	0
	Rochester	117	104	-11.1%	-4.3%	70	4	0	74	27	2	1	30	0	0
	WDNY Total Month	381	402	5.5%	-4.9%	228	8	0	236	156	5	1	162	4	0
	WDNY Total YTD	3,294	3,132			2,097	59	8	2,164	912	18	2	932	31	5
Oct.	Buffalo	269	327	21.6%	-2.3%	188	6	1	195	121	7	0	128	4	0
	Rochester	119	116	-2.5%	-4.1%	82	0	1	83	30	1	0	31	2	0
	WDNY Total Month	388	443	14.2%	-2.9%	270	6	2	278	151	8	0	159	6	0
	WDNY Total YTD	3,682	3,575			2,367	65	10	2,442	1,063	26	2	1,091	37	5
Nov.	Buffalo	218	181	-17.0%	-3.5%	122	5	0	127	48	2	1	51	3	0
	Rochester	120	121	0.8%	-3.7%	90	0	0	90	30	0	0	30	1	0
	WDNY Total Month	338	302	-10.7%	-3.6%	212	5	0	217	78	2	1	81	4	0
	WDNY Total YTD	4,020	3,877			2,579	70	10	2,659	1,141	28	3	1,172	41	5
<b>Year to Date</b>		Cases Filed 2017	Cases Filed 2018	% change		Chapter 7 YTD				Chapter 13 YTD				Chapter 11 YTD	Chapter 12 & 15 YTD
						<sup>1</sup> Non-Bus.	<sup>2</sup> Business	<sup>3</sup> Other	Total Ch. 7	<sup>1</sup> Non-Bus.	<sup>2</sup> Business	<sup>3</sup> Other	Total Ch.13		
Buffalo YTD		2,682	2,588	-3.5%		1,681	38	6	1,725	812	16	1	829	31	3
Rochester YTD		1,338	1,289	-3.7%		898	32	4	934	329	12	2	343	10	2
<b>WDNY YTD</b>		<b>4,020</b>	<b>3,877</b>	<b>-3.6%</b>		<b>2,579</b>	<b>70</b>	<b>10</b>	<b>2,659</b>	<b>1,141</b>	<b>28</b>	<b>3</b>	<b>1,172</b>	<b>41</b>	<b>5</b>

<sup>1</sup> Primary "Nature of Debt" is consumer debt. <sup>2</sup> Primary "Nature of Debt" is business debt. <sup>3</sup> Primary "Nature of Debt" is other.

Counties in Division	Buffalo	Jan.	Feb.	March	April	May	June	July	Aug.	Sept.	Oct.	Nov.	Dec.	County Totals 2018 YTD	% chg from 2017 YTD
(Olean) Allegany		1	1	2	4	2	4	5	3	3	5	3		33	-21.4%
(Olean) Cattaraugus		8	7	9	6	7	5	6	5	12	7	9		81	-14.7%
Chautauqua		13	18	26	28	25	15	20	16	13	24	7		205	-3.3%
Erie		123	127	163	170	152	148	134	148	231	244	124		1,764	-2.3%
(Batavia) Genesee		7	5	10	5	3	6	3	10	2	8	4		63	12.5%
Niagara		26	23	37	33	38	31	36	32	34	33	29		352	-8.3%
(Batavia) Orleans		7	3	8	7	5	4	5	5	3	6	4		57	26.7%
(Batavia) Wyoming		3	2	3	9	4	4	3	4	0	0	1		33	-19.5%
Out of County		0	0	0	0	0	0	0	0	0	0	0		0	
<b>2018 Totals</b>		<b>188</b>	<b>186</b>	<b>258</b>	<b>262</b>	<b>236</b>	<b>217</b>	<b>212</b>	<b>223</b>	<b>298</b>	<b>327</b>	<b>181</b>	<b>0</b>	<b>2,588</b>	<b>-3.5%</b>

Counties in Division	Rochester	Jan.	Feb.	March	April	May	June	July	Aug.	Sept.	Oct.	Nov.	Dec.	County Totals 2018 YTD	% chg from 2017 YTD
(WG) Chemung		8	2	11	11	7	6	5	8	6	8	11		83	-21.0%
Livingston		2	3	2	4	9	9	3	7	5	3	2		49	0.0%
Monroe		75	72	95	85	76	75	76	78	76	75	80		863	4.2%
Ontario		5	8	7	13	6	7	8	9	3	11	8		85	-26.1%
(WG) Schuyler		1	0	4	2	2	1	0	2	1	2	3		18	5.9%
Seneca		4	3	5	4	2	4	3	1	2	2	1		31	34.8%
(WG) Steuben		2	3	10	16	5	5	3	4	5	10	5		68	-24.4%
Wayne		3	2	10	5	6	11	5	15	6	4	11		78	-22.0%
Yates		0	2	1	3	2	3	0	1	0	1	0		13	8.3%
Out of County		0	0	0	0	0	1	0	0	0	0	0		1	
<b>2018 Totals</b>		<b>100</b>	<b>95</b>	<b>145</b>	<b>143</b>	<b>115</b>	<b>122</b>	<b>103</b>	<b>125</b>	<b>104</b>	<b>116</b>	<b>121</b>	<b>0</b>	<b>1,289</b>	<b>-3.7%</b>

<b>WDNY Combined Totals</b>		<b>288</b>	<b>281</b>	<b>403</b>	<b>405</b>	<b>351</b>	<b>339</b>	<b>315</b>	<b>348</b>	<b>402</b>	<b>443</b>	<b>302</b>	<b>0</b>	<b>3,877</b>	<b>-3.6%</b>
-----------------------------	--	------------	------------	------------	------------	------------	------------	------------	------------	------------	------------	------------	----------	--------------	--------------

U.S. Bankruptcy Court - Western District of New York

Historical Case Filing Report (All Chapters)

Month Ending November 30, 2018

Report # 3

Page 1 of 2

		2009	% Change	2010	% Change	2011	% Change	2012	% Change	2013	% Change	2014	% Change	2015	% Change	2016	% Change	2017	% Change	2018
Jan.	Buffalo	382	-8.4%	350	-19.7%	281	-3.2%	272	-7.4%	252	-4.0%	242	-22.7%	188	-2.1%	184	11.4%	205	-8.3%	188
	Rochester	228	-16.7%	190	-19.5%	153	-0.7%	152	17.8%	179	-25.1%	134	-1.5%	131	-16.8%	109	-19.3%	88	13.6%	100
	WDNY Total Month	610	-11.5%	540	-19.6%	434	-2.3%	424	1.7%	431	-12.8%	376	-15.2%	319	-8.2%	293	0.0%	293	-1.7%	288
	WDNY Total YTD	610	-11.5%	540	-19.6%	434	-2.3%	424	1.7%	431	-12.8%	376	-15.2%	319	-8.2%	293	0.0%	293	-1.7%	288
Feb.	Buffalo	400	-8.0%	368	-0.8%	365	-3.8%	351	-22.2%	273	-15.4%	231	-20.3%	184	15.2%	212	-11.8%	187	-0.5%	186
	Rochester	233	-15.0%	198	-1.0%	196	-6.6%	183	-19.1%	148	-29.7%	104	-28.8%	74	32.4%	98	8.2%	106	-10.4%	95
	WDNY Total Month	633	-10.6%	566	-0.9%	561	-4.8%	534	-21.2%	421	-20.4%	335	-23.0%	258	20.2%	310	-5.5%	293	-4.1%	281
	WDNY Total YTD	1,243	-11.0%	1,106	-10.0%	995	-3.7%	958	-11.1%	852	-16.5%	711	-18.8%	577	4.5%	603	-2.8%	586	-2.9%	569
Mar.	Buffalo	562	10.1%	619	-22.5%	480	-12.7%	419	-5.5%	396	-20.7%	314	-4.5%	300	-15.0%	255	9.0%	278	-7.2%	258
	Rochester	358	-7.5%	331	-11.8%	292	-18.8%	237	-27.4%	172	0.0%	172	-23.8%	131	13.7%	149	-2.7%	145	0.0%	145
	WDNY Total Month	920	3.3%	950	-18.7%	772	-15.0%	656	-13.4%	568	-14.4%	486	-11.3%	431	-6.3%	404	4.7%	423	-4.7%	403
	WDNY Total YTD	2,163	-4.9%	2,056	-14.1%	1,767	-8.7%	1,614	-12.0%	1,420	-15.7%	1,197	-15.8%	1,008	-0.1%	1,007	0.2%	1,009	-3.7%	972
Apr.	Buffalo	646	-17.3%	534	-7.5%	494	-25.3%	369	-10.3%	331	-0.9%	328	-5.2%	311	-15.4%	263	-1.1%	260	0.8%	262
	Rochester	345	0.0%	345	-28.4%	247	-10.5%	221	-10.0%	199	-19.1%	161	8.7%	175	-12.6%	153	-18.3%	125	14.4%	143
	WDNY Total Month	991	-11.3%	879	-15.7%	741	-20.4%	590	-10.2%	530	-7.7%	489	-0.6%	486	-14.4%	416	-7.5%	385	5.2%	405
	WDNY Total YTD	3,154	-6.9%	2,935	-14.5%	2,508	-12.1%	2,204	-11.5%	1,950	-13.5%	1,686	-11.4%	1,494	-4.8%	1,423	-2.0%	1,394	-1.2%	1,377
May	Buffalo	533	10.7%	590	-30.7%	409	3.2%	422	-20.1%	337	-15.4%	285	0.7%	287	-15.3%	243	15.6%	281	-16.0%	236
	Rochester	318	-0.9%	315	-31.4%	216	-0.9%	214	-4.2%	205	-15.1%	174	-18.4%	142	3.5%	147	-1.4%	145	-20.7%	115
	WDNY Total Month	851	6.3%	905	-30.9%	625	1.8%	636	-14.8%	542	-15.3%	459	-6.5%	429	-9.1%	390	9.2%	426	-17.6%	351
	WDNY Total YTD	4,005	-4.1%	3,840	-18.4%	3,133	-9.4%	2,840	-12.3%	2,492	-13.9%	2,145	-10.3%	1,923	-5.7%	1,813	0.4%	1,820	-5.1%	1,728
June	Buffalo	592	-7.6%	547	-21.9%	427	-14.8%	364	-11.3%	323	-15.5%	273	-12.5%	239	4.6%	250	-5.2%	237	-8.4%	217
	Rochester	299	-5.0%	284	-13.4%	246	-36.6%	156	4.5%	163	-22.7%	126	5.6%	133	3.8%	138	0.7%	139	-12.2%	122
	WDNY Total Month	891	-6.7%	831	-19.0%	673	-22.7%	520	-6.5%	486	-17.9%	399	-6.8%	372	4.3%	388	-3.1%	376	-9.8%	339
	WDNY Total YTD	4,896	-4.6%	4,671	-18.5%	3,806	-11.7%	3,360	-11.4%	2,978	-14.6%	2,544	-9.8%	2,295	-4.1%	2,201	-0.2%	2,196	-5.9%	2,067

U.S. Bankruptcy Court - Western District of New York

Historical Case Filing Report (All Chapters)

Month Ending November 30, 2018

Report # 3

Page 2 of 2

		2009	% Change	2010	% Change	2011	% Change	2012	% Change	2013	% Change	2014	% Change	2015	% Change	2016	% Change	2017	% Change	2018
July	Buffalo	570	-15.1%	484	-33.5%	322	1.9%	328	-13.7%	283	-17.3%	234	9.4%	257	-30.7%	178	34.8%	240	-11.7%	212
	Rochester	287	-13.6%	248	-23.8%	189	-5.8%	178	8.4%	193	-26.9%	141	-2.8%	137	-21.9%	107	5.6%	113	-8.8%	103
	WDNY Total Month	857	-14.6%	732	-30.2%	511	-1.0%	506	-5.9%	476	-21.2%	375	4.8%	394	-27.7%	285	23.9%	353	-10.8%	315
	<b>WDNY Total YTD</b>	<b>5,753</b>	<b>-6.1%</b>	<b>5,403</b>	<b>-20.1%</b>	<b>4,317</b>	<b>-10.4%</b>	<b>3,866</b>	<b>-10.7%</b>	<b>3,454</b>	<b>-15.5%</b>	<b>2,919</b>	<b>-7.9%</b>	<b>2,689</b>	<b>-7.5%</b>	<b>2,486</b>	<b>2.5%</b>	<b>2,549</b>	<b>-6.6%</b>	<b>2,382</b>
Aug	Buffalo	550	-15.5%	465	-16.6%	388	-7.2%	360	-15.6%	304	-23.4%	233	-8.2%	214	9.8%	235	3.4%	243	-8.2%	223
	Rochester	288	-1.4%	284	-25.0%	213	-16.0%	179	-20.7%	142	-1.4%	140	-10.7%	126	-12.7%	110	10.0%	121	3.3%	125
	WDNY Total Month	838	-10.6%	749	-19.8%	601	-10.3%	539	-17.3%	446	-16.4%	373	-9.1%	340	1.5%	345	5.5%	364	-4.4%	348
	<b>WDNY Total YTD</b>	<b>6,591</b>	<b>-6.6%</b>	<b>6,153</b>	<b>-20.1%</b>	<b>4,919</b>	<b>-10.4%</b>	<b>4,405</b>	<b>-11.5%</b>	<b>3,900</b>	<b>-15.6%</b>	<b>3,292</b>	<b>-8.0%</b>	<b>3,029</b>	<b>-6.5%</b>	<b>2,831</b>	<b>2.9%</b>	<b>2,913</b>	<b>-6.3%</b>	<b>2,730</b>
Sep	Buffalo	475	-5.7%	448	-6.3%	420	-39.0%	256	13.3%	290	-2.1%	284	0.0%	284	-18.3%	232	13.8%	264	12.9%	298
	Rochester	286	-9.4%	259	-29.7%	182	-26.4%	134	15.7%	155	-12.9%	135	-20.0%	108	6.5%	115	1.7%	117	-11.1%	104
	WDNY Total Month	761	-7.1%	707	-14.9%	602	-35.2%	390	14.1%	445	-5.8%	419	-6.4%	392	-11.5%	347	9.8%	381	5.5%	402
	<b>WDNY Total YTD</b>	<b>7,352</b>	<b>-6.7%</b>	<b>6,860</b>	<b>-19.5%</b>	<b>5,522</b>	<b>-13.2%</b>	<b>4,795</b>	<b>-9.4%</b>	<b>4,345</b>	<b>-14.6%</b>	<b>3,711</b>	<b>-7.9%</b>	<b>3,421</b>	<b>-7.1%</b>	<b>3,178</b>	<b>3.7%</b>	<b>3,294</b>	<b>-4.9%</b>	<b>3,132</b>
Oct	Buffalo	594	-21.2%	468	-22.6%	362	13.3%	410	-4.6%	391	-24.0%	297	-11.8%	262	18.7%	311	-13.5%	269	21.6%	327
	Rochester	323	-21.7%	253	-32.0%	172	-5.8%	162	-14.2%	139	-12.9%	121	9.9%	133	-13.5%	115	3.5%	119	-2.5%	116
	WDNY Total Month	917	-21.4%	721	-25.9%	534	7.1%	572	-7.3%	530	-21.1%	418	-5.5%	395	7.8%	426	-8.9%	388	14.2%	443
	<b>WDNY Total YTD</b>	<b>8,269</b>	<b>-8.3%</b>	<b>7,581</b>	<b>-20.1%</b>	<b>6,055</b>	<b>-11.4%</b>	<b>5,367</b>	<b>-9.2%</b>	<b>4,875</b>	<b>-15.3%</b>	<b>4,129</b>	<b>-7.6%</b>	<b>3,816</b>	<b>-5.6%</b>	<b>3,604</b>	<b>2.2%</b>	<b>3,682</b>	<b>-2.9%</b>	<b>3,575</b>
Nov	Buffalo	494	-13.0%	430	-22.3%	334	-20.7%	265	-10.9%	236	-2.5%	230	-7.4%	213	-15.0%	181	20.4%	218	-17.0%	181
	Rochester	286	-25.2%	214	-7.9%	197	-18.8%	160	-16.3%	134	-5.2%	127	0.0%	127	-1.6%	125	-4.0%	120	0.8%	121
	WDNY Total Month	780	-17.4%	644	-17.5%	531	-20.0%	425	-12.9%	370	-3.5%	357	-4.8%	340	-10.0%	306	10.5%	338	-10.7%	302
	<b>WDNY Total YTD</b>	<b>9,049</b>	<b>-9.1%</b>	<b>8,225</b>	<b>-19.9%</b>	<b>6,585</b>	<b>-12.0%</b>	<b>5,792</b>	<b>-9.4%</b>	<b>5,245</b>	<b>-14.5%</b>	<b>4,486</b>	<b>-7.4%</b>	<b>4,156</b>	<b>-5.9%</b>	<b>3,910</b>	<b>2.8%</b>	<b>4,020</b>	<b>-3.6%</b>	<b>3,877</b>
Dec	Buffalo	440	-23.6%	336	-2.4%	328	-20.7%	260	-16.9%	216	-2.8%	210	-10.5%	189	-23.8%	144	27.8%	184		
	Rochester	240	-16.3%	201	-13.4%	174	-19.5%	140	-9.3%	127	15.7%	147	-45.6%	80	28.8%	103	-11.7%	91		
	WDNY Total Month	680	-21.0%	537	-6.5%	502	-20.3%	400	-14.3%	343	4.1%	357	-24.9%	269	-8.2%	247	11.3%	275		
	<b>WDNY Total YTD</b>	<b>9,729</b>	<b>-9.9%</b>	<b>8,762</b>	<b>-19.1%</b>	<b>7,087</b>	<b>-12.6%</b>	<b>6,192</b>	<b>-9.8%</b>	<b>5,588</b>	<b>-13.3%</b>	<b>4,843</b>	<b>-8.7%</b>	<b>4,425</b>	<b>-6.1%</b>	<b>4,157</b>	<b>3.3%</b>	<b>4,295</b>		
		<b>2009</b>	<b>% Change</b>	<b>2010</b>	<b>% Change</b>	<b>2011</b>	<b>% Change</b>	<b>2012</b>	<b>% Change</b>	<b>2013</b>	<b>% Change</b>	<b>2014</b>	<b>% Change</b>	<b>2015</b>	<b>% Change</b>	<b>2016</b>	<b>% Change</b>	<b>2017</b>	<b>% Change</b>	<b>2018</b>
	<b>Buffalo Total</b>	6,238	-9.6%	5,639	-18.2%	4,610	-11.6%	4,076	-10.9%	3,632	-13.0%	3,161	-7.4%	2,928	-8.2%	2,688	6.6%	2,866		
	<b>Rochester Total</b>	3,491	-10.6%	3,122	-20.7%	2,477	-14.6%	2,116	-7.6%	1,956	-14.0%	1,682	-11.0%	1,497	-1.9%	1,469	-2.7%	1,429		
	<b>WDNY Total</b>	<b>9,729</b>	<b>-9.9%</b>	<b>8,761</b>	<b>-19.1%</b>	<b>7,087</b>	<b>-12.6%</b>	<b>6,192</b>	<b>-9.8%</b>	<b>5,588</b>	<b>-13.3%</b>	<b>4,843</b>	<b>-8.6%</b>	<b>4,425</b>	<b>-6.1%</b>	<b>4,157</b>	<b>3.3%</b>	<b>4,295</b>		

Month Ending November 30, 2018

		Chapter 7	Chapter 13	Chapter 11	Chapter 12/15	Cases Filed by Month	Cases Filed YTD	Adversary Cases				Case Closings		
								Pending Prior Month	New	Closed Current Month	Net Pending	Cases Closed 2017	Cases Closed 2018	% change
Jan.	Chief Judge Bucki	61	32	0	0	93	93	32	1	3	30	131	136	3.8%
	Judge Kaplan	65	30	0	0	95	95	96	5	36	65	131	131	0.0%
	Judge Warren	73	24	3	0	100	100	10	6	2	14	129	114	-11.6%
	Buffalo Total	126	62	0	0	188	188	128	6	39	95	262	267	1.9%
	Rochester Total	73	24	3	0	100	100	10	6	2	14	129	114	-11.6%
	<b>WDNY Total</b>	<b>199</b>	<b>86</b>	<b>3</b>	<b>0</b>	<b>288</b>	<b>288</b>	<b>138</b>	<b>12</b>	<b>41</b>	<b>109</b>	<b>391</b>	<b>381</b>	<b>-2.6%</b>
Feb.	Chief Judge Bucki	61	35	0	1	97	190	30	0	1	29	125	81	-35.2%
	Judge Kaplan	59	30	0	0	89	184	65	0	7	58	104	93	-10.6%
	Judge Warren	63	30	2	0	95	195	14	30	1	43	120	158	31.7%
	Buffalo Total	120	65	0	1	186	374	95	0	8	87	229	174	-24.0%
	Rochester Total	63	30	2	0	95	195	14	30	1	43	120	158	31.7%
	<b>WDNY Total</b>	<b>183</b>	<b>95</b>	<b>2</b>	<b>1</b>	<b>281</b>	<b>569</b>	<b>109</b>	<b>30</b>	<b>9</b>	<b>130</b>	<b>349</b>	<b>332</b>	<b>-4.9%</b>
Mar.	Chief Judge Bucki	99	25	0	0	124	314	29	1	7	23	99	155	56.6%
	Judge Kaplan	96	38	0	0	134	318	58	1	27	32	111	159	43.2%
	Judge Warren	109	36	0	0	145	340	43	2	1	44	120	201	67.5%
	Buffalo Total	195	63	0	0	258	632	87	2	34	55	210	314	49.5%
	Rochester Total	109	36	0	0	145	340	43	2	1	44	120	201	67.5%
	<b>WDNY Total</b>	<b>304</b>	<b>99</b>	<b>0</b>	<b>0</b>	<b>403</b>	<b>972</b>	<b>130</b>	<b>4</b>	<b>35</b>	<b>99</b>	<b>330</b>	<b>515</b>	<b>56.1%</b>
Apr.	Chief Judge Bucki	85	44	2	0	131	445	23	1	3	21	106	121	14.2%
	Judge Kaplan	92	30	8	1	131	449	32	1	6	27	109	92	-15.6%
	Judge Warren	110	33	0	0	143	483	44	0	2	42	90	81	-10.0%
	Buffalo Total	177	74	10	1	262	894	55	2	9	48	215	213	-0.9%
	Rochester Total	110	33	0	0	143	483	44	0	2	42	90	81	-10.0%
	<b>WDNY Total</b>	<b>287</b>	<b>107</b>	<b>10</b>	<b>1</b>	<b>405</b>	<b>1,377</b>	<b>99</b>	<b>2</b>	<b>11</b>	<b>90</b>	<b>305</b>	<b>294</b>	<b>-3.6%</b>
May	Chief Judge Bucki	100	29	0	0	129	574	21	1	3	19	127	128	0.8%
	Judge Kaplan	79	26	2	0	107	556	27	1	2	26	125	95	-24.0%
	Judge Warren	80	34	0	1	115	598	42	2	7	37	75	164	118.7%
	Buffalo Total	179	55	2	0	236	1,130	48	2	5	45	252	223	-11.5%
	Rochester Total	80	34	0	1	115	598	42	2	7	37	75	164	118.7%
	<b>WDNY Total</b>	<b>259</b>	<b>89</b>	<b>2</b>	<b>1</b>	<b>351</b>	<b>1,728</b>	<b>90</b>	<b>4</b>	<b>12</b>	<b>82</b>	<b>327</b>	<b>387</b>	<b>18.3%</b>

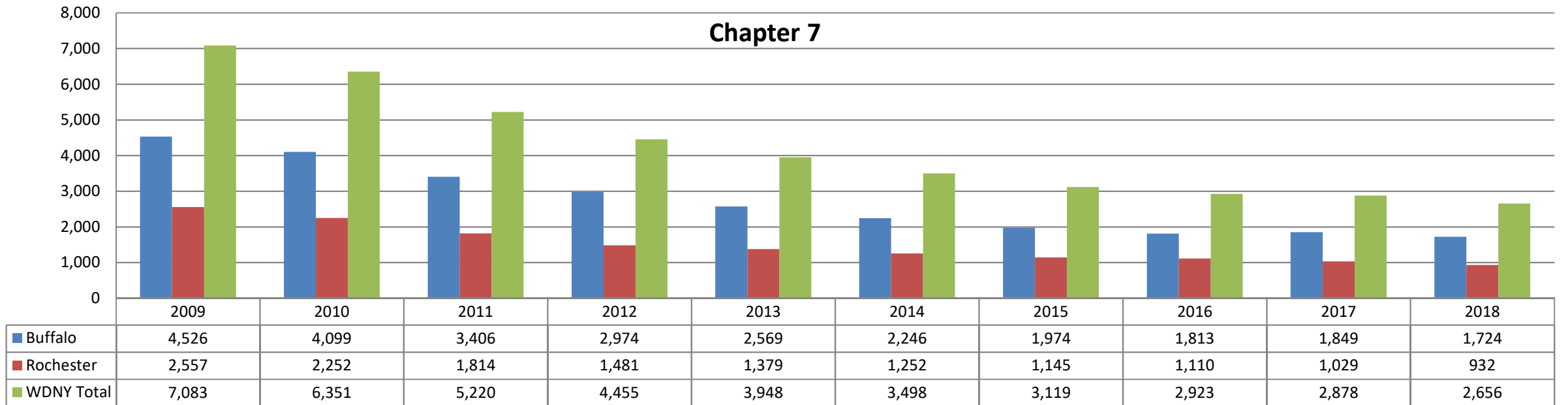
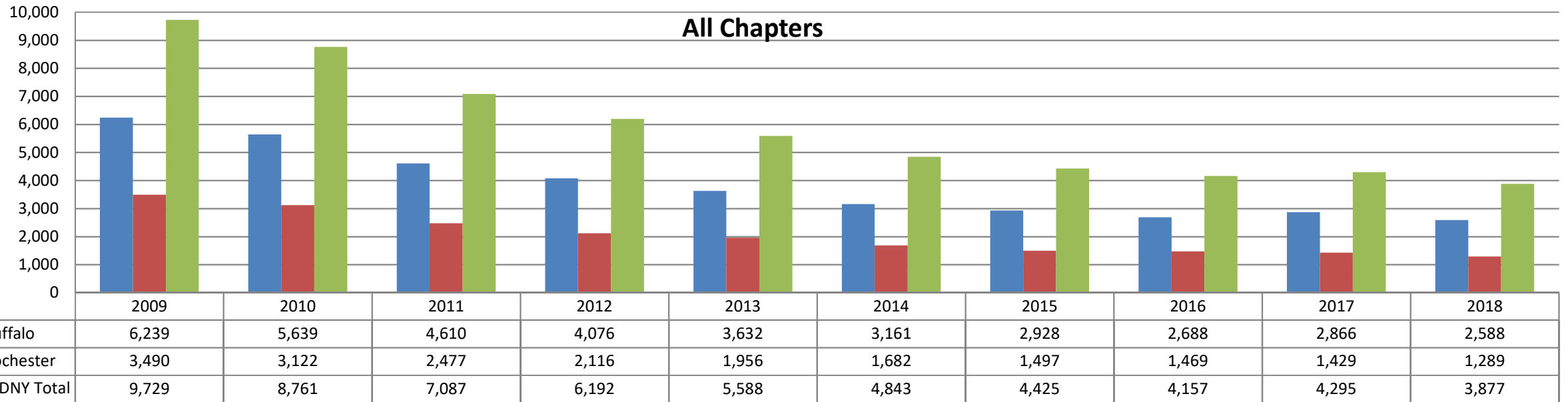
		Chapter 7	Chapter 13	Chapter 11	Chapter 12/15	Cases Filed by Month	Cases Filed YTD	Adversary Cases				Case Closings		
								Pending Prior Month	New	Closed Current Month	Net Pending	Cases Closed 2017	Cases Closed 2018	% change
June	Chief Judge Bucki	57	23	2	1	83	657	19	4	2	21	125	105	-16.0%
	Judge Kaplan	85	48	1	0	134	690	26	1	7	20	113	113	0.0%
	Judge Warren	95	27	0	0	122	720	37	1	6	32	247	142	-42.5%
	Buffalo Total	142	71	3	1	217	1,347	45	5	9	41	238	218	-8.4%
	Rochester Total	95	27	0	0	122	720	37	1	6	32	247	142	-42.5%
	<b>WDNY Total</b>	<b>237</b>	<b>98</b>	<b>3</b>	<b>1</b>	<b>339</b>	<b>2,067</b>	<b>82</b>	<b>6</b>	<b>15</b>	<b>73</b>	<b>485</b>	<b>360</b>	<b>-25.8%</b>
July	Chief Judge Bucki	91	32	3	0	126	783	21	9	0	30	108	137	26.9%
	Judge Kaplan	60	25	1	0	86	776	20	0	2	18	126	129	2.4%
	Judge Warren	74	28	1	0	103	823	32	2	4	30	88	151	71.6%
	Buffalo Total	151	57	4	0	212	1,559	41	9	2	48	234	266	13.7%
	Rochester Total	74	28	1	0	103	823	32	2	4	30	88	151	71.6%
	<b>WDNY Total</b>	<b>225</b>	<b>85</b>	<b>5</b>	<b>0</b>	<b>315</b>	<b>2,382</b>	<b>73</b>	<b>11</b>	<b>6</b>	<b>78</b>	<b>322</b>	<b>417</b>	<b>29.5%</b>
Aug.	Chief Judge Bucki	67	41	0	0	108	891	30	3	0	33	183	146	-20.2%
	Judge Kaplan	83	31	1	0	115	891	18	4	1	21	142	143	0.7%
	Judge Warren	81	42	1	1	125	948	30	0	12	18	144	157	9.0%
	Buffalo Total	150	72	1	0	223	1,782	48	7	1	54	325	289	-11.1%
	Rochester Total	81	42	1	1	125	948	30	0	12	18	144	157	9.0%
	<b>WDNY Total</b>	<b>231</b>	<b>114</b>	<b>2</b>	<b>1</b>	<b>348</b>	<b>2,730</b>	<b>78</b>	<b>7</b>	<b>13</b>	<b>72</b>	<b>469</b>	<b>446</b>	<b>-4.9%</b>
Sep.	Chief Judge Bucki	76	61	3	0	140	1,031	33	2	3	32	181	122	-32.6%
	Judge Kaplan	86	71	1	0	158	1,049	21	0	4	17	167	113	-32.3%
	Judge Warren	74	30	0	0	104	1,052	18	0	3	15	177	121	-31.6%
	Buffalo Total	162	132	4	0	298	2,080	54	2	7	49	348	235	-32.5%
	Rochester Total	74	30	0	0	104	1,052	18	0	3	15	177	121	-31.6%
	<b>WDNY Total</b>	<b>236</b>	<b>162</b>	<b>4</b>	<b>0</b>	<b>402</b>	<b>3,132</b>	<b>72</b>	<b>2</b>	<b>10</b>	<b>64</b>	<b>525</b>	<b>356</b>	<b>-32.2%</b>

U.S. Bankruptcy Court - Western District of New York  
 Caseload by Judge, Division & District  
 Month Ending November 30, 2018

Report #4  
 Page 3 of 3

		Chapter 7	Chapter 13	Chapter 11	Chapter 12/15	Cases Filed by Month	Cases Filed YTD	Adversary Cases				Case Closings		
								Pending Prior Month	New	Closed Current Month	Net Pending	Cases Closed 2017	Cases Closed 2018	% change
Oct.	Chief Judge Bucki	92	72	1	0	165	1,196	32	2	1	33	125	111	-11.2%
	Judge Kaplan	103	56	3	0	162	1,211	17	0	0	17	126	128	1.6%
	Judge Warren	83	31	2	0	116	1,168	15	0	2	13	113	152	34.5%
	Buffalo Total	195	128	4	0	327	2,407	49	2	1	50	251	239	-4.8%
	Rochester Total	83	31	2	0	116	1,168	15	0	2	13	113	152	34.5%
	<b>WDNY Total</b>	<b>278</b>	<b>159</b>	<b>6</b>	<b>0</b>	<b>443</b>	<b>3,575</b>	<b>64</b>	<b>2</b>	<b>3</b>	<b>63</b>	<b>364</b>	<b>391</b>	7.4%
Nov.	Chief Judge Bucki	83	35	3	0	121	1,317	33	1	1	33	116	144	24.1%
	Judge Kaplan	44	16	0	0	60	1,271	17	1	2	16	113	118	4.4%
	Judge Warren	90	30	1	0	121	1,289	13	1	0	14	162	81	-50.0%
	Buffalo Total	127	51	3	0	181	2,588	50	2	3	49	229	262	14.4%
	Rochester Total	90	30	1	0	121	1,289	13	1	0	14	162	81	-50.0%
	<b>WDNY Total</b>	<b>217</b>	<b>81</b>	<b>4</b>	<b>0</b>	<b>302</b>	<b>3,877</b>	<b>63</b>	<b>3</b>	<b>3</b>	<b>63</b>	<b>391</b>	<b>343</b>	-12.3%
<b>Year to Date</b>		Chapter 7	Chapter 13	Chapter 11	Chapter 12 & 15	YTD Totals All Chapters	Adversary Cases YTD				Case Closings YTD			
							New	Closed	Net Pending		Cases Closed 2017	Cases Closed 2018	% change	
	Chief Judge Bucki YTD	872	429	14	2	1,317	25	24	33		1,426	1,386	-2.8%	
	Judge Kaplan YTD	852	401	17	1	1,271	14	94	16		1,367	1,314	-3.9%	
	Judge Warren YTD	932	345	10	2	1,289	44	40	14		1,465	1,522	3.9%	
	Buffalo Total YTD	1,724	830	31	3	2,588	39	118	49		2,793	2,700	-3.3%	
	Rochester Total YTD	932	345	10	2	1,289	44	40	14		1,465	1,522	3.9%	
	<b>WDNY Totals YTD</b>	<b>2,656</b>	<b>1,175</b>	<b>41</b>	<b>5</b>	<b>3,877</b>	<b>83</b>	<b>158</b>	<b>63</b>		<b>4,258</b>	<b>4,222</b>	-0.8%	



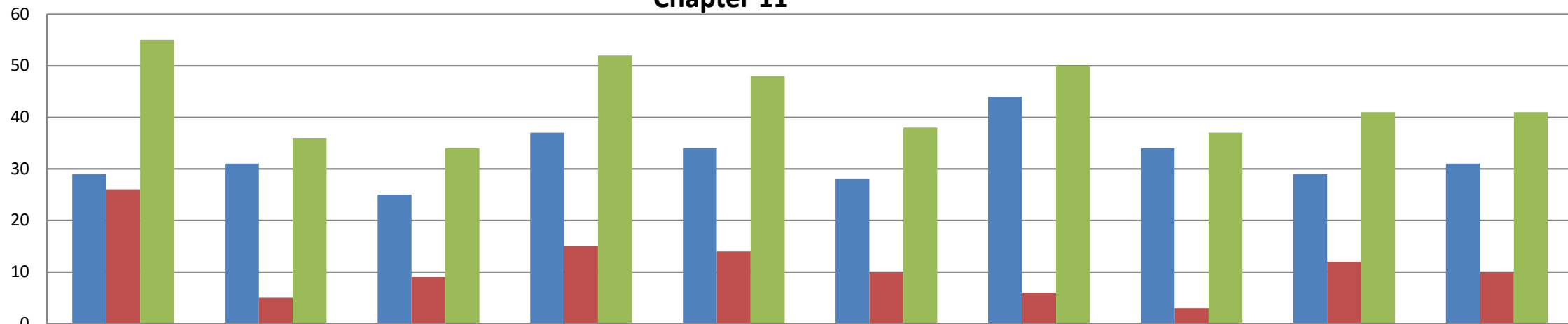


### Chapter 13 (includes Chapter 12 & 15)



	2009	2010	2011	2012	2013	2014	2015	2016	2017	2018
Buffalo	1,684	1,509	1,179	1,065	1,029	887	909	841	988	833
Rochester	907	865	654	620	563	420	347	356	388	347
WDNY Totals	2,591	2,374	1,833	1,685	1,592	1,307	1,256	1,197	1,376	1,180

### Chapter 11



	2009	2010	2011	2012	2013	2014	2015	2016	2017	2018
Buffalo	29	31	25	37	34	28	44	34	29	31
Rochester	26	5	9	15	14	10	6	3	12	10
WDNY Totals	55	36	34	52	48	38	50	37	41	41