

Month Ending November 30, 2020

		Cases Filed 2019	Cases Filed 2020	% change same month	% change YTD	Chapter 7				Chapter 13				Chapter 11	Ch 12 & 15
						<sup>1</sup> Non-Bus.	<sup>2</sup> Business	<sup>3</sup> Other	Total Ch. 7	<sup>1</sup> Non-Bus.	<sup>2</sup> Business	<sup>3</sup> Other	Total Ch.13		
Jan.	Buffalo	172	187	8.7%	8.7%	127	7	0	134	51	1	0	52	1	0
	Rochester	98	98	0.0%	0.0%	67	0	0	67	27	2	0	29	2	0
	WDNY Total Month	270	285	5.6%	5.6%	194	7	0	201	78	3	0	81	3	0
	WDNY Total YTD	270	285			194	7	0	201	78	3	0	81	3	0
Feb.	Buffalo	203	155	-23.6%	-8.8%	95	2	0	97	52	1	1	54	4	0
	Rochester	87	88	1.1%	0.5%	66	4	0	70	18	0	0	18	0	0
	WDNY Total Month	290	243	-16.2%	-5.7%	161	6	0	167	70	1	1	72	4	0
	WDNY Total YTD	560	528			355	13	0	368	148	4	1	153	7	0
Mar.	Buffalo	275	215	-21.8%	-14.3%	163	3	0	166	44	0	0	44	5	0
	Rochester	120	116	-3.3%	-1.0%	91	3	1	95	19	0	1	20	1	0
	WDNY Total Month	395	331	-16.2%	-10.1%	254	6	1	261	63	0	1	64	6	0
	WDNY Total YTD	955	859			609	19	1	629	211	4	2	217	13	0
Apr.	Buffalo	273	96	-64.8%	-29.3%	65	9	0	74	20	1	0	21	1	0
	Rochester	139	55	-60.4%	-19.6%	46	0	0	46	9	0	0	9	0	0
	WDNY Total Month	412	151	-63.3%	-26.1%	111	9	0	120	29	1	0	30	1	0
	WDNY Total YTD	1,367	1,010			720	28	1	749	240	5	2	247	14	0
May	Buffalo	264	124	-53.0%	-34.5%	103	3	0	106	18	0	0	18	0	0
	Rochester	124	67	-46.0%	-25.4%	60	2	0	62	4	1	0	5	0	0
	WDNY Total Month	388	191	-50.8%	-31.6%	163	5	0	168	22	1	0	23	0	0
	WDNY Total YTD	1,755	1,201			883	33	1	917	262	6	2	270	14	0
June	Buffalo	193	124	-35.8%	-34.7%	102	3	0	105	17	1	0	18	1	0
	Rochester	108	83	-23.1%	-25.0%	64	5	0	69	13	1	0	14	0	0
	WDNY Total Month	301	207	-31.2%	-31.5%	166	8	0	174	30	2	0	32	1	0
	WDNY Total YTD	2,056	1,408			1,049	41	1	1,091	292	8	2	302	15	0
July	Buffalo	231	153	-33.8%	-34.6%	125	0	0	125	26	0	0	26	2	0
	Rochester	115	94	-18.3%	-24.0%	80	3	0	83	11	0	0	11	0	0
	WDNY Total Month	346	247	-28.6%	-31.1%	205	3	0	208	37	0	0	37	2	0
	WDNY Total YTD	2,402	1,655			1,254	44	1	1,299	329	8	2	339	17	0

<sup>1</sup> Primary "Nature of Debt" is consumer debt. <sup>2</sup> Primary "Nature of Debt" is business debt. <sup>3</sup> Primary "Nature of Debt" is other.

		Cases Filed 2019	Cases Filed 2020	% change same month	% change YTD	Chapter 7				Chapter 13				Chapter 11	Ch. 12 & 15
						<sup>1</sup> Non-Bus.	<sup>2</sup> Business	<sup>3</sup> Other	Total Ch. 7	<sup>1</sup> Non-Bus.	<sup>2</sup> Business	<sup>3</sup> Other	Total Ch.13		
Aug.	Buffalo	198	147	-25.8%	-33.6%	125	6	0	131	15	0	0	15	1	0
	Rochester	110	74	-32.7%	-25.1%	60	3	0	63	11	0	0	11	0	0
	WDNY Total Month	308	221	-28.2%	-30.8%	185	9	0	194	26	0	0	26	1	0
	WDNY Total YTD	2,710	1,876			1,439	53	1	1,493	355	8	2	365	18	0
Sep.	Buffalo	322	116	-64.0%	-38.2%	91	4	0	95	21	0	0	21	0	0
	Rochester	106	72	-32.1%	-25.8%	56	2	1	59	12	0	0	12	1	0
	WDNY Total Month	428	188	-56.1%	-34.2%	147	6	1	154	33	0	0	33	1	0
	WDNY Total YTD	3,138	2,064			1,586	59	2	1,647	388	8	2	398	19	0
Oct.	Buffalo	267	131	-50.9%	-39.6%	97	5	1	103	26	2	0	28	0	0
	Rochester	121	68	-43.8%	-27.7%	59	2	1	62	4	1	0	5	1	0
	WDNY Total Month	388	199	-48.7%	-35.8%	156	7	2	165	30	3	0	33	1	0
	WDNY Total YTD	3,526	2,263			1,742	66	4	1,812	418	11	2	431	20	0
Nov.	Buffalo	192	106	-44.8%	-40.0%	78	3	0	81	25	0	0	25	0	0
	Rochester	112	79	-29.5%	-27.9%	57	3	0	60	18	1	0	19	0	0
	WDNY Total Month	304	185	-39.1%	-36.1%	135	6	0	141	43	1	0	44	0	0
	WDNY Total YTD	3,830	2,448			1,877	72	4	1,953	461	12	2	475	20	0
<b>Year to Date</b>		Cases Filed 2019	Cases Filed 2020	% change		Chapter 7 YTD				Chapter 13 YTD				Chapter 11 YTD	Chapter 12 & 15 YTD
						<sup>1</sup> Non-Bus.	<sup>2</sup> Business	<sup>3</sup> Other	Total Ch. 7	<sup>1</sup> Non-Bus.	<sup>2</sup> Business	<sup>3</sup> Other	Total Ch.13		
Buffalo YTD		2,590	1,554	-40.0%		1,171	45	1	1,217	315	6	1	322	15	0
Rochester YTD		1,240	894	-27.9%		706	27	3	736	146	6	1	153	5	0
WDNY YTD		3,830	2,448	-36.1%		1,877	72	4	1,953	461	12	2	475	20	0

<sup>1</sup> Primary "Nature of Debt" is consumer debt.

<sup>2</sup> Primary "Nature of Debt" is business debt.

<sup>3</sup> Primary "Nature of Debt" is other.

Counties in Buffalo Division	Jan.	Feb.	March	April	May	June	July	Aug.	Sept.	Oct.	Nov.	Dec.	County Totals 2020 YTD	% chg from 2019 YTD
(Olean) Allegany	5	3	2	1	5	2	2	5	2	1	2		30	-45.5%
(Olean) Cattaraugus	8	7	7	6	2	1	8	5	4	7	2		57	-33.7%
Chautauqua	15	5	21	10	2	9	3	18	10	8	5		106	-46.7%
Erie	112	99	133	54	93	77	102	88	78	86	68		990	-41.8%
(Batavia) Genesee	8	11	6	3	1	5	4	5	2	3	4		52	-20.0%
Niagara	31	27	40	20	17	19	29	20	19	23	19		264	-30.9%
(Batavia) Orleans	3	3	4	1	2	6	2	4	1	3	2		31	-50.8%
(Batavia) Wyoming	4	0	2	1	2	5	3	2	0	0	4		23	-39.5%
Out of County	1	0	0	0	0	0	0	0	0	0	0		1	
<b>2020 Totals</b>	<b>187</b>	<b>155</b>	<b>215</b>	<b>96</b>	<b>124</b>	<b>124</b>	<b>153</b>	<b>147</b>	<b>116</b>	<b>131</b>	<b>106</b>	<b>0</b>	<b>1,554</b>	<b>-40.0%</b>

Counties in Rochester Division	Jan.	Feb.	March	April	May	June	July	Aug.	Sept.	Oct.	Nov.	Dec.	County Totals 2020 YTD	% chg from 2019 YTD
(WG) Chemung	3	8	9	3	3	5	4	4	3	3	2		47	-35.6%
Livingston	6	1	3	1	2	3	6	2	2	6	3		35	-18.6%
Monroe	63	47	78	39	41	59	53	53	44	44	56		577	-26.7%
Ontario	9	11	8	5	5	5	6	5	8	1	5		68	-34.6%
(WG) Schuyler	1	3	1	1	1	0	2	0	0	1	2		12	-33.3%
Seneca	2	0	2	1	1	1	1	2	2	2	1		15	-51.6%
(WG) Steuben	3	7	8	2	5	4	5	5	5	7	4		55	-35.3%
Wayne	11	11	7	2	7	6	15	2	5	3	6		75	-13.8%
Yates	0	0	0	1	2	0	2	1	3	1	0		10	-16.7%
Out of County	0	0	0	0	0	0	0	0	0	0	0		0	
<b>2020 Totals</b>	<b>98</b>	<b>88</b>	<b>116</b>	<b>55</b>	<b>67</b>	<b>83</b>	<b>94</b>	<b>74</b>	<b>72</b>	<b>68</b>	<b>79</b>	<b>0</b>	<b>894</b>	<b>-27.9%</b>

<b>WDNY Combined Totals</b>	<b>285</b>	<b>243</b>	<b>331</b>	<b>151</b>	<b>191</b>	<b>207</b>	<b>247</b>	<b>221</b>	<b>188</b>	<b>199</b>	<b>185</b>	<b>0</b>	<b>2,448</b>	<b>-36.1%</b>
-----------------------------	------------	------------	------------	------------	------------	------------	------------	------------	------------	------------	------------	----------	--------------	---------------

U.S. Bankruptcy Court - Western District of New York  
Historical Case Filing Report (All Chapters)

Month Ending November 30, 2020

		2011	% Change	2012	% Change	2013	% Change	2014	% Change	2015	% Change	2016	% Change	2017	% Change	2018	% Change	2019	% Change	2020
Jan.	Buffalo	281	-3.2%	272	-7.4%	252	-4.0%	242	-22.7%	188	-2.1%	184	11.4%	205	-8.3%	188	-8.5%	172	8.7%	187
	Rochester	153	-0.7%	152	17.8%	179	-25.1%	134	-1.5%	131	-16.8%	109	-19.3%	88	13.6%	100	-2.0%	98	0.0%	98
	WDNY Total Month	434	-2.3%	424	1.7%	431	-12.8%	376	-15.2%	319	-8.2%	293	0.0%	293	-1.7%	288	-6.3%	270	5.6%	285
	<b>WDNY Total YTD</b>	<b>434</b>	<b>-2.3%</b>	<b>424</b>	<b>1.7%</b>	<b>431</b>	<b>-12.8%</b>	<b>376</b>	<b>-15.2%</b>	<b>319</b>	<b>-8.2%</b>	<b>293</b>	<b>0.0%</b>	<b>293</b>	<b>-1.7%</b>	<b>288</b>	<b>-6.3%</b>	<b>270</b>	<b>5.6%</b>	<b>285</b>
Feb.	Buffalo	365	-3.8%	351	-22.2%	273	-15.4%	231	-20.3%	184	15.2%	212	-11.8%	187	-0.5%	186	9.1%	203	-23.6%	155
	Rochester	196	-6.6%	183	-19.1%	148	-29.7%	104	-28.8%	74	32.4%	98	8.2%	106	-10.4%	95	-8.4%	87	1.1%	88
	WDNY Total Month	561	-4.8%	534	-21.2%	421	-20.4%	335	-23.0%	258	20.2%	310	-5.5%	293	-4.1%	281	3.2%	290	-16.2%	243
	<b>WDNY Total YTD</b>	<b>995</b>	<b>-3.7%</b>	<b>958</b>	<b>-11.1%</b>	<b>852</b>	<b>-16.5%</b>	<b>711</b>	<b>-18.8%</b>	<b>577</b>	<b>4.5%</b>	<b>603</b>	<b>-2.8%</b>	<b>586</b>	<b>-2.9%</b>	<b>569</b>	<b>-1.6%</b>	<b>560</b>	<b>-5.7%</b>	<b>528</b>
Mar.	Buffalo	480	-12.7%	419	-5.5%	396	-20.7%	314	-4.5%	300	-15.0%	255	9.0%	278	-7.2%	258	6.6%	275	-21.8%	215
	Rochester	292	-18.8%	237	-27.4%	172	0.0%	172	-23.8%	131	13.7%	149	-2.7%	145	0.0%	145	-17.2%	120	-3.3%	116
	WDNY Total Month	772	-15.0%	656	-13.4%	568	-14.4%	486	-11.3%	431	-6.3%	404	4.7%	423	-4.7%	403	-2.0%	395	-16.2%	331
	<b>WDNY Total YTD</b>	<b>1,767</b>	<b>-8.7%</b>	<b>1,614</b>	<b>-12.0%</b>	<b>1,420</b>	<b>-15.7%</b>	<b>1,197</b>	<b>-15.8%</b>	<b>1,008</b>	<b>-0.1%</b>	<b>1,007</b>	<b>0.2%</b>	<b>1,009</b>	<b>-3.7%</b>	<b>972</b>	<b>-1.7%</b>	<b>955</b>	<b>-10.1%</b>	<b>859</b>
Apr.	Buffalo	494	-25.3%	369	-10.3%	331	-0.9%	328	-5.2%	311	-15.4%	263	-1.1%	260	0.8%	262	4.2%	273	-64.8%	96
	Rochester	247	-10.5%	221	-10.0%	199	-19.1%	161	8.7%	175	-12.6%	153	-18.3%	125	14.4%	143	-2.8%	139	-60.4%	55
	WDNY Total Month	741	-20.4%	590	-10.2%	530	-7.7%	489	-0.6%	486	-14.4%	416	-7.5%	385	5.2%	405	1.7%	412	-63.3%	151
	<b>WDNY Total YTD</b>	<b>2,508</b>	<b>-12.1%</b>	<b>2,204</b>	<b>-11.5%</b>	<b>1,950</b>	<b>-13.5%</b>	<b>1,686</b>	<b>-11.4%</b>	<b>1,494</b>	<b>-4.8%</b>	<b>1,423</b>	<b>-2.0%</b>	<b>1,394</b>	<b>-1.2%</b>	<b>1,377</b>	<b>-0.7%</b>	<b>1,367</b>	<b>-26.1%</b>	<b>1,010</b>
May	Buffalo	409	3.2%	422	-20.1%	337	-15.4%	285	0.7%	287	-15.3%	243	15.6%	281	-16.0%	236	11.9%	264	-53.0%	124
	Rochester	216	-0.9%	214	-4.2%	205	-15.1%	174	-18.4%	142	3.5%	147	-1.4%	145	-20.7%	115	7.8%	124	-46.0%	67
	WDNY Total Month	625	1.8%	636	-14.8%	542	-15.3%	459	-6.5%	429	-9.1%	390	9.2%	426	-17.6%	351	10.5%	388	-50.8%	191
	<b>WDNY Total YTD</b>	<b>3,133</b>	<b>-9.4%</b>	<b>2,840</b>	<b>-12.3%</b>	<b>2,492</b>	<b>-13.9%</b>	<b>2,145</b>	<b>-10.3%</b>	<b>1,923</b>	<b>-5.7%</b>	<b>1,813</b>	<b>0.4%</b>	<b>1,820</b>	<b>-5.1%</b>	<b>1,728</b>	<b>1.6%</b>	<b>1,755</b>	<b>-31.6%</b>	<b>1,201</b>
June	Buffalo	427	-14.8%	364	-11.3%	323	-15.5%	273	-12.5%	239	4.6%	250	-5.2%	237	-8.4%	217	-11.1%	193	-35.8%	124
	Rochester	246	-36.6%	156	4.5%	163	-22.7%	126	5.6%	133	3.8%	138	0.7%	139	-12.2%	122	-11.5%	108	-23.1%	83
	WDNY Total Month	673	-22.7%	520	-6.5%	486	-17.9%	399	-6.8%	372	4.3%	388	-3.1%	376	-9.8%	339	-11.2%	301	-31.2%	207
	<b>WDNY Total YTD</b>	<b>3,806</b>	<b>-11.7%</b>	<b>3,360</b>	<b>-11.4%</b>	<b>2,978</b>	<b>-14.6%</b>	<b>2,544</b>	<b>-9.8%</b>	<b>2,295</b>	<b>-4.1%</b>	<b>2,201</b>	<b>-0.2%</b>	<b>2,196</b>	<b>-5.9%</b>	<b>2,067</b>	<b>-0.5%</b>	<b>2,056</b>	<b>-31.5%</b>	<b>1,408</b>

U.S. Bankruptcy Court - Western District of New York

Historical Case Filing Report (All Chapters)

Month Ending November 30, 2020

Report #3

Page 2 of 2

		2011	% Change	2012	% Change	2013	% Change	2014	% Change	2015	% Change	2016	% Change	2017	% Change	2018	% Change	2019	% Change	2020
July	Buffalo	322	1.9%	328	-13.7%	283	-17.3%	234	9.4%	257	-30.7%	178	34.8%	240	-11.7%	212	9.0%	231	-33.8%	153
	Rochester	189	-5.8%	178	8.4%	193	-26.9%	141	-2.8%	137	-21.9%	107	5.6%	113	-8.8%	103	11.7%	115	-18.3%	94
	WDNY Total Month	511	-1.0%	506	-5.9%	476	-21.2%	375	4.8%	394	-27.7%	285	23.9%	353	-10.8%	315	9.8%	346	-28.6%	247
	WDNY Total YTD	4,317	-10.4%	3,866	-10.7%	3,454	-15.5%	2,919	-7.9%	2,689	-7.5%	2,486	2.5%	2,549	-6.6%	2,382	0.8%	2,402	-31.1%	1,655
Aug	Buffalo	388	-7.2%	360	-15.6%	304	-23.4%	233	-8.2%	214	9.8%	235	3.4%	243	-8.2%	223	-11.2%	198	-25.8%	147
	Rochester	213	-16.0%	179	-20.7%	142	-1.4%	140	-10.7%	126	-12.7%	110	10.0%	121	3.3%	125	-12.0%	110	-32.7%	74
	WDNY Total Month	601	-10.3%	539	-17.3%	446	-16.4%	373	-9.1%	340	1.5%	345	5.5%	364	-4.4%	348	-11.5%	308	-28.2%	221
	WDNY Total YTD	4,919	-10.4%	4,405	-11.5%	3,900	-15.6%	3,292	-8.0%	3,029	-6.5%	2,831	2.9%	2,913	-6.3%	2,730	-0.7%	2,710	-30.8%	1,876
Sep	Buffalo	420	-39.0%	256	13.3%	290	-2.1%	284	0.0%	284	-18.3%	232	13.8%	264	12.9%	298	8.1%	322	-64.0%	116
	Rochester	182	-26.4%	134	15.7%	155	-12.9%	135	-20.0%	108	6.5%	115	1.7%	117	-11.1%	104	1.9%	106	-32.1%	72
	WDNY Total Month	602	-35.2%	390	14.1%	445	-5.8%	419	-6.4%	392	-11.5%	347	9.8%	381	5.5%	402	6.5%	428	-56.1%	188
	WDNY Total YTD	5,522	-13.2%	4,795	-9.4%	4,345	-14.6%	3,711	-7.9%	3,421	-7.1%	3,178	3.7%	3,294	-4.9%	3,132	0.2%	3,138	-34.2%	2,064
Oct	Buffalo	362	13.3%	410	-4.6%	391	-24.0%	297	-11.8%	262	18.7%	311	-13.5%	269	21.6%	327	-18.3%	267	-50.9%	131
	Rochester	172	-5.8%	162	-14.2%	139	-12.9%	121	9.9%	133	-13.5%	115	3.5%	119	-2.5%	116	4.3%	121	-43.8%	68
	WDNY Total Month	534	7.1%	572	-7.3%	530	-21.1%	418	-5.5%	395	7.8%	426	-8.9%	388	14.2%	443	-12.4%	388	-48.7%	199
	WDNY Total YTD	6,055	-11.4%	5,367	-9.2%	4,875	-15.3%	4,129	-7.6%	3,816	-5.6%	3,604	2.2%	3,682	-2.9%	3,575	-1.4%	3,526	-35.8%	2,263
Nov	Buffalo	334	-20.7%	265	-10.9%	236	-2.5%	230	-7.4%	213	-15.0%	181	20.4%	218	-17.0%	181	6.1%	192	-44.8%	106
	Rochester	197	-18.8%	160	-16.3%	134	-5.2%	127	0.0%	127	-1.6%	125	-4.0%	120	0.8%	121	-7.4%	112	-29.5%	79
	WDNY Total Month	531	-20.0%	425	-12.9%	370	-3.5%	357	-4.8%	340	-10.0%	306	10.5%	338	-10.7%	302	0.7%	304	-39.1%	185
	WDNY Total YTD	6,585	-12.0%	5,792	-9.4%	5,245	-14.5%	4,486	-7.4%	4,156	-5.9%	3,910	2.8%	4,020	-3.6%	3,877	-1.2%	3,830	-36.1%	2,448
Dec	Buffalo	328	-20.7%	260	-16.9%	216	-2.8%	210	-10.5%	189	-23.8%	144	27.8%	184	-21.7%	144	18.1%	170		
	Rochester	174	-19.5%	140	-9.3%	127	15.7%	147	-45.6%	80	28.8%	103	-11.7%	91	5.5%	96	-24.0%	73		
	WDNY Total Month	502	-20.3%	400	-14.3%	343	4.1%	357	-24.9%	269	-8.2%	247	11.3%	275	-12.7%	240	1.3%	243		
	WDNY Total YTD	7,087	-12.6%	6,192	-9.8%	5,588	-13.3%	4,843	-8.7%	4,425	-6.1%	4,157	3.3%	4,295	-4.1%	4,117	-1.1%	4,073		
		<b>2011</b>	<b>% Change</b>	<b>2012</b>	<b>% Change</b>	<b>2013</b>	<b>% Change</b>	<b>2014</b>	<b>% Change</b>	<b>2015</b>	<b>% Change</b>	<b>2016</b>	<b>% Change</b>	<b>2017</b>	<b>% Change</b>	<b>2018</b>	<b>% Change</b>	<b>2019</b>	<b>% Change</b>	<b>2020</b>
	<b>Buffalo Total</b>	4,610	-11.6%	4,076	-10.9%	3,632	-13.0%	3,161	-7.4%	2,928	-8.2%	2,688	6.6%	2,866	-4.7%	2,732	1.0%	2,760		
	<b>Rochester Total</b>	2,477	-14.6%	2,116	-7.6%	1,956	-14.0%	1,682	-11.0%	1,497	-1.9%	1,469	-2.7%	1,429	-3.1%	1,385	-5.2%	1,313		
	<b>WDNY Total</b>	7,087	-12.6%	6,192	-9.8%	5,588	-13.3%	4,843	-8.6%	4,425	-6.1%	4,157	3.3%	4,295	-4.1%	4,117	-1.1%	4,073		

U.S. Bankruptcy Court - Western District of New York

Caseload by Judge, Division & District

Month Ending November 30, 2020

Report #4

Page 1 of 4

		Chapter 7	Chapter 13	Chapter 11	Chapter 12/15	Cases Filed by Month	Cases Filed YTD	Adversary Cases				Case Closings		
								Pending Prior Month	New	Closed Current Month	Net Pending	Cases Closed 2019	Cases Closed 2020	% change
Jan.	Chief Judge Bucki	84	36	0	0	120	120	36	2	2	36	103	165	60.2%
	Judge Kaplan	38	10	1	0	49	49	75	0	2	73	96	82	-14.6%
	Judge Warren(Buffalo)	12	6	0	0	18	18	0	0	0	0	0	16	n/a
	Judge Warren(Rochester)	67	29	2	0	98	98	12	1	1	12	150	129	-14.0%
	Buffalo Total	134	52	1	0	187	187	111	2	4	109	199	263	32.2%
	Rochester Total	67	29	2	0	98	98	12	1	1	12	150	129	-14.0%
	<b>WDNY Total</b>	<b>201</b>	<b>81</b>	<b>3</b>	<b>0</b>	<b>285</b>	<b>285</b>	<b>123</b>	<b>3</b>	<b>5</b>	<b>121</b>	<b>349</b>	<b>392</b>	12.3%
Feb.	Chief Judge Bucki	62	28	4	0	94	214	36	3	0	39	91	100	9.9%
	Judge Kaplan	24	15	0	0	39	88	73	4	3	74	130	71	-45.4%
	Judge Warren(Buffalo)	11	11	0	0	22	40	0	0	0	0	0	23	n/a
	Judge Warren(Rochester)	70	18	0	0	88	186	12	0	5	7	102	126	23.5%
	Buffalo Total	97	54	4	0	155	342	109	7	3	113	221	194	-12.2%
	Rochester Total	70	18	0	0	88	186	12	0	5	7	102	126	23.5%
	<b>WDNY Total</b>	<b>167</b>	<b>72</b>	<b>4</b>	<b>0</b>	<b>243</b>	<b>528</b>	<b>121</b>	<b>7</b>	<b>8</b>	<b>120</b>	<b>323</b>	<b>320</b>	-0.9%
Mar.	Chief Judge Bucki	121	25	3	0	149	363	39	2	4	37	144	148	2.8%
	Judge Kaplan	42	10	2	0	54	142	74	0	3	71	131	86	-34.4%
	Judge Warren(Buffalo)	3	9	0	0	12	52	0	0	0	0	0	24	n/a
	Judge Warren(Rochester)	95	20	1	0	116	302	7	0	1	6	155	108	-30.3%
	Buffalo Total	166	44	5	0	215	557	113	2	7	108	275	258	-6.2%
	Rochester Total	95	20	1	0	116	302	7	0	1	6	155	108	-30.3%
	<b>WDNY Total</b>	<b>261</b>	<b>64</b>	<b>6</b>	<b>0</b>	<b>331</b>	<b>859</b>	<b>120</b>	<b>2</b>	<b>8</b>	<b>114</b>	<b>430</b>	<b>366</b>	-14.9%
Apr.	Chief Judge Bucki	46	10	1	0	57	420	37	2	4	35	107	115	7.5%
	Judge Kaplan	21	5	0	0	26	168	71	2	2	71	122	61	-50.0%
	Judge Warren(Buffalo)	7	6	0	0	13	65	0	0	0	0	0	18	n/a
	Judge Warren(Rochester)	46	9	0	0	55	357	6	1	0	7	100	98	-2.0%
	Buffalo Total	74	21	1	0	96	653	108	4	6	106	229	194	-15.3%
	Rochester Total	46	9	0	0	55	357	6	1	0	7	100	98	-2.0%
	<b>WDNY Total</b>	<b>120</b>	<b>30</b>	<b>1</b>	<b>0</b>	<b>151</b>	<b>1,010</b>	<b>114</b>	<b>5</b>	<b>6</b>	<b>113</b>	<b>329</b>	<b>292</b>	-11.2%



U.S. Bankruptcy Court - Western District of New York

Caseload by Judge, Division & District

Month Ending November 30, 2020

Report # 4

Page 2 of 4

		Chapter 7	Chapter 13	Chapter 11	Chapter 12/15	Cases Filed by Month	Cases Filed YTD	Adversary Cases				Case Closings		
								Pending Prior Month	New	Closed Current Month	Net Pending	Cases Closed 2019	Cases Closed 2020	% change
May	Chief Judge Bucki	71	13	0	0	84	504	35	5	1	39	120	73	-39.2%
	Judge Kaplan	20	4	0	0	24	192	71	2	2	71	110	47	-57.3%
	Judge Warren(Buffalo)	15	1	0	0	16	81	0	0	0	0	0	9	n/a
	Judge Warren(Rochester)	62	5	0	0	67	424	7	0	2	5	127	89	-29.9%
	Buffalo Total	106	18	0	0	124	777	106	7	3	110	230	129	-43.9%
	Rochester Total	62	5	0	0	67	424	7	0	2	5	127	89	-29.9%
	<b>WDNY Total</b>	<b>168</b>	<b>23</b>	<b>0</b>	<b>0</b>	<b>191</b>	<b>1,201</b>	<b>113</b>	<b>7</b>	<b>5</b>	<b>115</b>	<b>357</b>	<b>218</b>	<b>-38.9%</b>
June	Chief Judge Bucki	67	9	1	0	77	581	39	0	2	37	105	122	16.2%
	Judge Kaplan	30	7	0	0	37	229	71	9	5	75	95	65	-31.6%
	Judge Warren(Buffalo)	8	2	0	0	10	91	0	0	0	0	0	29	n/a
	Judge Warren(Rochester)	69	14	0	0	83	507	5	1	0	6	131	83	-36.6%
	Buffalo Total	105	18	1	0	124	901	110	9	7	112	200	216	8.0%
	Rochester Total	69	14	0	0	83	507	5	1	0	6	131	83	-36.6%
	<b>WDNY Total</b>	<b>174</b>	<b>32</b>	<b>1</b>	<b>0</b>	<b>207</b>	<b>1,408</b>	<b>115</b>	<b>10</b>	<b>7</b>	<b>118</b>	<b>331</b>	<b>299</b>	<b>-9.7%</b>
July	Chief Judge Bucki	87	16	2	0	105	686	37	2	4	35	146	142	-2.7%
	Judge Kaplan	35	8	0	0	43	272	75	5	14	66	128	49	-61.7%
	Judge Warren(Buffalo)	3	2	0	0	5	96	0	0	0	0	0	21	n/a
	Judge Warren(Rochester)	83	11	0	0	94	601	6	4	0	10	86	139	61.6%
	Buffalo Total	125	26	2	0	153	1,054	112	7	18	101	274	212	-22.6%
	Rochester Total	83	11	0	0	94	601	6	4	0	10	86	139	61.6%
	<b>WDNY Total</b>	<b>208</b>	<b>37</b>	<b>2</b>	<b>0</b>	<b>247</b>	<b>1,655</b>	<b>118</b>	<b>11</b>	<b>18</b>	<b>111</b>	<b>360</b>	<b>351</b>	<b>-2.5%</b>
Aug.	Chief Judge Bucki	99	9	1	0	109	795	35	1	5	31	127	85	-33.1%
	Judge Kaplan	25	6	0	0	31	303	66	1	3	64	149	61	-59.1%
	Judge Warren (Buffalo)	7	0	0	0	7	103	0	0	0	0	0	12	n/a
	Judge Warren (Rochester)	63	11	0	0	74	675	10	3	1	12	191	72	-62.3%
	Buffalo Total	131	15	1	0	147	1,201	101	2	8	95	276	158	-42.8%
	Rochester Total	63	11	0	0	74	675	10	3	1	12	191	72	-62.3%
	<b>WDNY Total</b>	<b>194</b>	<b>26</b>	<b>1</b>	<b>0</b>	<b>221</b>	<b>1,876</b>	<b>111</b>	<b>5</b>	<b>9</b>	<b>107</b>	<b>467</b>	<b>230</b>	<b>-50.7%</b>

U.S. Bankruptcy Court - Western District of New York

Caseload by Judge, Division & District

Month Ending November 30, 2020

Report #4

Page 3 of 4

		Chapter 7	Chapter 13	Chapter 11	Chapter 12/15	Cases Filed by Month	Cases Filed YTD	Adversary Cases				Case Closings		
								Pending Prior Month	New	Closed Current Month	Net Pending	Cases Closed 2019	Cases Closed 2020	% change
Sep.	Chief Judge Bucki	55	15	0	0	70	865	31	2	1	32	130	132	1.5%
	Judge Kaplan	18	6	0	0	24	327	64	1	4	61	153	55	-64.1%
	Judge Warren(Buffalo)	22	0	0	0	22	125	0	0	0	0	1	25	n/a
	Judge Warren(Rochester)	59	12	1	0	72	747	12	1	1	12	82	93	13.4%
	Buffalo Total	95	21	0	0	116	1,317	95	3	5	93	284	212	-25.4%
	Rochester Total	59	12	1	0	72	747	12	1	1	12	82	93	13.4%
	<b>WDNY Total</b>	<b>154</b>	<b>33</b>	<b>1</b>	<b>0</b>	<b>188</b>	<b>2,064</b>	<b>107</b>	<b>4</b>	<b>6</b>	<b>105</b>	<b>366</b>	<b>305</b>	<b>-16.7%</b>
Oct.	Chief Judge Bucki	72	16	0	0	88	953	32	0	1	31	130	120	-7.7%
	Judge Kaplan	23	9	0	0	32	359	61	1	0	62	109	58	-46.8%
	Judge Warren (Buffalo)	8	3	0	0	11	136	0	0	0	0	2	15	n/a
	Judge Warren (Rochester)	62	5	1	0	68	815	12	0	3	9	179	100	-44.1%
	Buffalo Total	103	28	0	0	131	1,448	93	1	1	93	241	193	-19.9%
	Rochester Total	62	5	1	0	68	815	12	0	3	9	179	100	-44.1%
	<b>WDNY Total</b>	<b>165</b>	<b>33</b>	<b>1</b>	<b>0</b>	<b>199</b>	<b>2,263</b>	<b>105</b>	<b>1</b>	<b>4</b>	<b>102</b>	<b>420</b>	<b>293</b>	<b>-30.2%</b>
Nov.	Chief Judge Bucki	57	12	0	0	69	1,022	31	2	4	29	49	86	75.5%
	Judge Kaplan	23	8	0	0	31	390	62	0	0	62	82	52	-36.6%
	Judge Warren (Buffalo)	1	5	0	0	6	142	0	0	0	0	0	6	n/a
	Judge Warren (Rochester)	60	19	0	0	79	894	9	0	1	8	108	91	-15.7%
	Buffalo Total	81	25	0	0	106	1,554	93	2	4	91	131	144	9.9%
	Rochester Total	60	19	0	0	79	894	9	0	1	8	108	91	-15.7%
	<b>WDNY Total</b>	<b>141</b>	<b>44</b>	<b>0</b>	<b>0</b>	<b>185</b>	<b>2,448</b>	<b>102</b>	<b>2</b>	<b>5</b>	<b>99</b>	<b>239</b>	<b>235</b>	<b>-1.7%</b>



U.S. Bankruptcy Court - Western District of New York

Caseload by Judge, Division & District

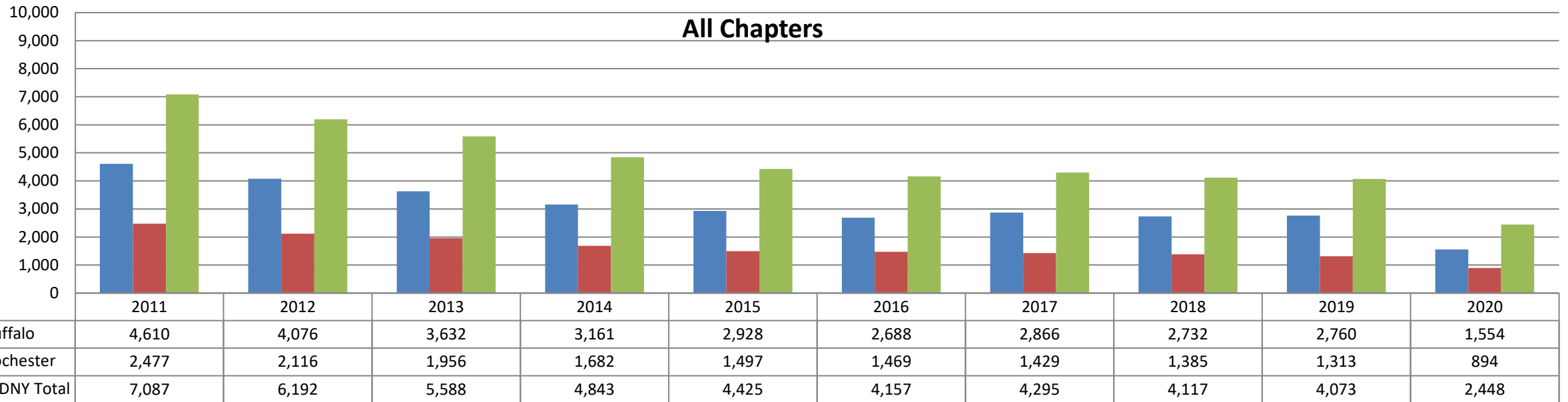
Month Ending November 30, 2020

Report # 4

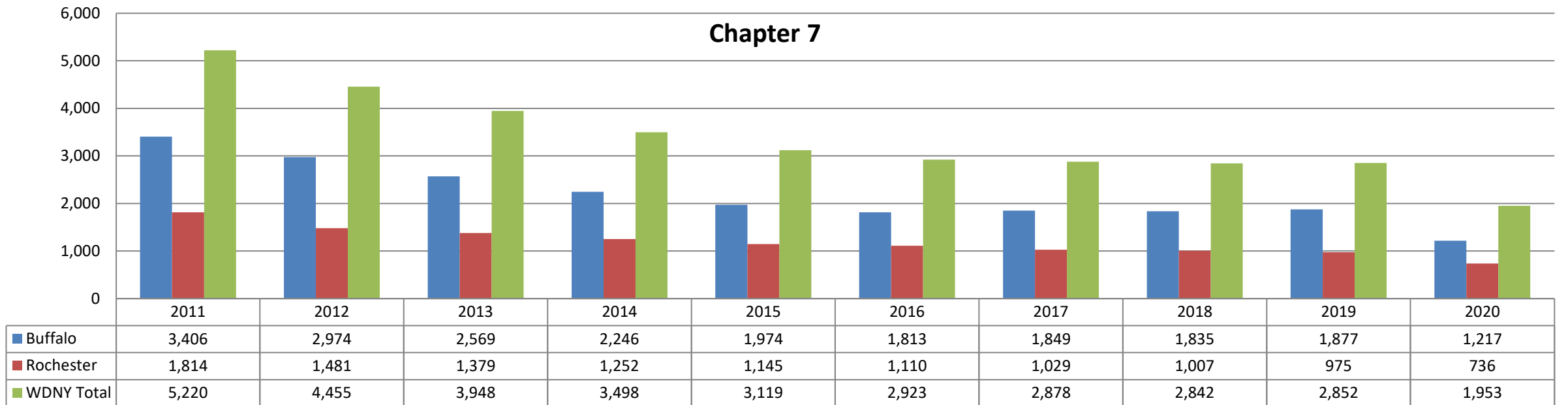
Page 4 of 4

Year to Date	Chapter 7	Chapter 13	Chapter 11	Chapter 12 & 15	YTD Totals All Chapters	Adversary Cases YTD			Case Closings YTD		
						New	Closed	Net Pending	Cases Closed 2019	Cases Closed 2020	% change
Chief Judge Bucki YTD	821	189	12	0	1,022	21	28	29	1,413	1,288	-8.8%
Judge Kaplan YTD	299	88	3	0	390	25	38	62	1,422	687	-51.7%
Judge Warren (Buff & Roch) YTD	833	198	5	0	1,036	11	11	8	1,513	1,326	-12.4%
Judge Warren (Buffalo) YTD	97	45	0	0	142	0	0	0	8	198	n/a
Judge Warren (Rochester) YTD	736	153	5	0	894	11	15	8	1,505	1,128	-25.0%
<b>Buffalo Total YTD</b>	<b>1,217</b>	<b>322</b>	<b>15</b>	<b>0</b>	<b>1,554</b>	<b>46</b>	<b>66</b>	<b>91</b>	<b>2,843</b>	<b>2,173</b>	<b>-23.6%</b>
<b>Rochester Total YTD</b>	<b>736</b>	<b>153</b>	<b>5</b>	<b>0</b>	<b>894</b>	<b>11</b>	<b>15</b>	<b>8</b>	<b>1,505</b>	<b>1,128</b>	<b>-25.0%</b>
<b>WDNY Totals YTD</b>	<b>1,953</b>	<b>475</b>	<b>20</b>	<b>0</b>	<b>2,448</b>	<b>57</b>	<b>81</b>	<b>99</b>	<b>4,348</b>	<b>3,301</b>	<b>-24.1%</b>

### All Chapters



### Chapter 7

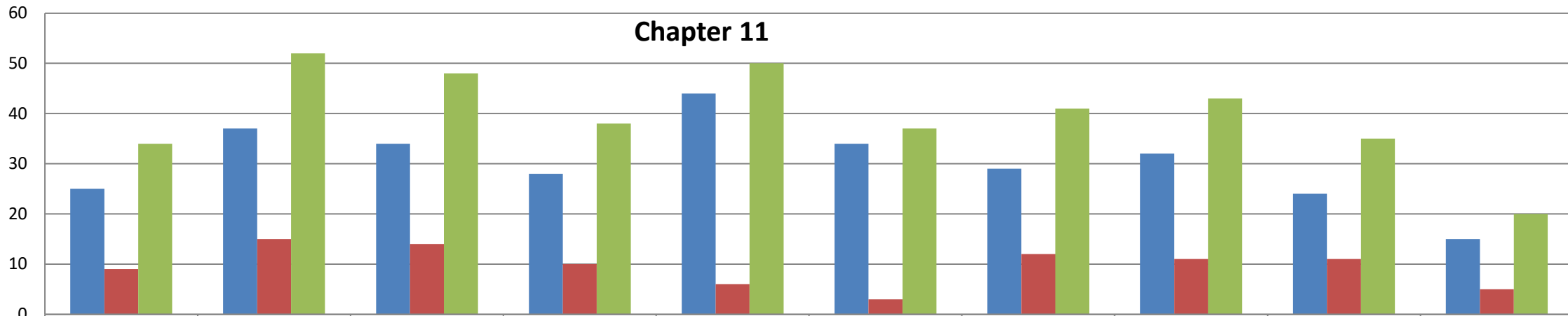


### Chapter 13 (includes Chapter 12 & 15)



	2011	2012	2013	2014	2015	2016	2017	2018	2019	2020
Buffalo	1,179	1,065	1,029	887	909	841	988	865	859	322
Rochester	654	620	563	420	347	356	388	367	327	153
WDNY Totals	1,833	1,685	1,592	1,307	1,256	1,197	1,376	1,232	1,186	475

### Chapter 11



	2011	2012	2013	2014	2015	2016	2017	2018	2019	2020
Buffalo	25	37	34	28	44	34	29	32	24	15
Rochester	9	15	14	10	6	3	12	11	11	5
WDNY Totals	34	52	48	38	50	37	41	43	35	20