

		Cases Filed 2022	Cases Filed 2023	% change same month	% change YTD	Chapter 7				Chapter 13				Chapter 11	Ch 12 & 15
						<sup>1</sup> Non-Bus.	<sup>2</sup> Business	<sup>3</sup> Other	Total Ch. 7	<sup>1</sup> Non-Bus.	<sup>2</sup> Business	<sup>3</sup> Other	Total Ch.13		
Jan.	Buffalo	82	78	-4.9%	-4.9%	41	2	0	43	32	1	0	33	2	0
	Rochester	45	56	24.4%	24.4%	33	0	0	33	22	0	0	22	1	0
	WDNY Total Month	127	134	5.5%	5.5%	74	2	0	76	54	1	0	55	3	0
	WDNY Total YTD	127	134			74	2	0	76	54	1	0	55	3	0
Feb.	Buffalo	93	84	-9.7%	-7.4%	58	0	0	58	26	0	0	26	0	0
	Rochester	48	39	-18.8%	2.2%	23	0	0	23	14	0	1	15	1	0
	WDNY Total Month	141	123	-12.8%	-4.1%	81	0	0	81	40	0	1	41	1	0
	WDNY Total YTD	268	257			155	2	0	157	94	1	1	96	4	0
Mar.	Buffalo	132	138	4.5%	-2.3%	92	3	0	95	43	0	0	43	0	0
	Rochester	65	50	-23.1%	-8.2%	33	2	1	36	14	0	0	14	0	0
	WDNY Total Month	197	188	-4.6%	-4.3%	125	5	1	131	57	0	0	57	0	0
	WDNY Total YTD	465	445			280	7	1	288	151	1	1	153	4	0
Apr.	Buffalo	119	110	-7.6%	-3.8%	79	1	0	80	27	0	0	27	3	0
	Rochester	61	56	-8.2%	-8.2%	39	3	0	42	14	0	0	14	0	0
	WDNY Total Month	180	166	-7.8%	-5.3%	118	4	0	122	41	0	0	41	3	0
	WDNY Total YTD	645	611			398	11	1	410	192	1	1	194	7	0
May	Buffalo	104	134	28.8%	2.6%	92	2	0	94	40	0	0	40	0	0
	Rochester	60	72	20.0%	-2.2%	49	1	1	51	17	2	0	19	2	0
	WDNY Total Month	164	206	25.6%	1.0%	141	3	1	145	57	2	0	59	2	0
	WDNY Total YTD	809	817			539	14	2	555	249	3	1	253	9	0
June	Buffalo	116	105	-9.5%	0.5%	65	1	1	67	36	1	0	37	1	0
	Rochester	48	53	10.4%	-0.3%	34	0	0	34	18	0	0	18	1	0
	WDNY Total Month	164	158	-3.7%	0.2%	99	1	1	101	54	1	0	55	2	0
	WDNY Total YTD	973	975			638	15	3	656	303	4	1	308	11	0
July	Buffalo	93	102	9.7%	1.6%	70	0	0	70	31	0	0	31	1	0
	Rochester	48	63	31.3%	3.7%	42	1	1	44	19	0	0	19	0	0
	WDNY Total Month	141	165	17.0%	2.3%	112	1	1	114	50	0	0	50	1	0
	WDNY Total YTD	1,114	1,140			750	16	4	770	353	4	1	358	12	0

<sup>1</sup> Primary "Nature of Debt" is consumer debt.

<sup>2</sup> Primary "Nature of Debt" is business debt.

<sup>3</sup> Primary "Nature of Debt" is other.

	Cases Filed 2022	Cases Filed 2023	% change same month	% change YTD	Chapter 7				Chapter 13				Chapter 11	Ch. 12 & 15	
					<sup>1</sup> Non-Bus.	<sup>2</sup> Business	<sup>3</sup> Other	Total Ch. 7	<sup>1</sup> Non-Bus.	<sup>2</sup> Business	<sup>3</sup> Other	Total Ch.13			
Aug.	Buffalo	78	128	64.1%	7.6%	78	2	1	81	44	1	0	45	2	0
	Rochester	48	66	37.5%	7.6%	42	2	2	46	19	1	0	20	0	0
	WDNY Total Month	126	194	54.0%	7.6%	120	4	3	127	63	2	0	65	2	0
	WDNY Total YTD	1,240	1,334			870	20	7	897	416	6	1	423	14	0
Sep.	Buffalo	110	142	29.1%	10.1%	59	1	1	61	72	4	0	76	5	0
	Rochester	60	50	-16.7%	4.6%	24	2	1	27	21	1	0	22	1	0
	WDNY Total Month	170	192	12.9%	8.2%	83	3	2	88	93	5	0	98	6	0
	WDNY Total YTD	1,410	1,526			953	23	9	985	509	11	1	521	20	0

Year to Date	Cases Filed 2022	Cases Filed 2023	% change	Chapter 7 YTD				Chapter 13 YTD				Chapter 11 YTD	Chapter 12 & 15 YTD
				<sup>1</sup> Non-Bus.	<sup>2</sup> Business	<sup>3</sup> Other	Total Ch. 7	<sup>1</sup> Non-Bus.	<sup>2</sup> Business	<sup>3</sup> Other	Total Ch.13		
Buffalo YTD	927	1,021	10.1%	634	12	3	649	351	7	0	358	14	0
Rochester YTD	483	505	4.6%	319	11	6	336	158	4	1	163	6	0
WDNY YTD	1,410	1,526	8.2%	953	23	9	985	509	11	1	521	20	0

<sup>1</sup> Primary "Nature of Debt" is consumer debt.

<sup>2</sup> Primary "Nature of Debt" is business debt.

<sup>3</sup> Primary "Nature of Debt" is other.

Counties in Buffalo Division	Jan.	Feb.	March	April	May	June	July	Aug.	Sept.	Oct.	Nov.	Dec.	County Totals 2023 YTD	% chg from 2022 YTD
(Olean) Allegany	1	3	4	2	2	1	3	4	1				21	23.5%
(Olean) Cattaraugus	1	4	5	6	4	3	4	8	3				38	18.8%
Chautauqua	2	6	11	1	10	14	10	7	13				74	-5.1%
Erie	61	48	83	71	84	56	54	85	116				658	17.5%
(Batavia) Genesee	2	2	3	7	6	3	5	2	1				31	10.7%
Niagara	9	15	26	20	23	21	18	15	7				154	-1.3%
(Batavia) Orleans	2	1	4	2	2	3	8	2	1				25	-10.7%
(Batavia) Wyoming	0	5	2	1	3	4	0	5	0				20	-28.6%
Out of County	0	0	0	0	0	0	0	0	0				0	
<b>2023 Totals</b>	<b>78</b>	<b>84</b>	<b>138</b>	<b>110</b>	<b>134</b>	<b>105</b>	<b>102</b>	<b>128</b>	<b>142</b>	<b>0</b>	<b>0</b>	<b>0</b>	<b>1,021</b>	<b>10.1%</b>

Counties in Rochester Division	Jan.	Feb.	March	April	May	June	July	Aug.	Sept.	Oct.	Nov.	Dec.	County Totals 2023 YTD	% chg from 2022 YTD
(WG) Chemung	1	3	1	5	6	4	3	4	1				28	-9.7%
Livingston	2	0	3	2	3	2	1	2	2				17	-19.0%
Monroe	42	28	33	33	44	30	41	41	41				333	12.5%
Ontario	2	3	4	4	5	6	5	6	0				35	-16.7%
(WG) Schuyler	1	0	3	2	3	0	0	0	1				10	233.3%
Seneca	0	1	1	1	3	3	1	2	0				12	-14.3%
(WG) Steuben	5	1	4	5	4	2	5	4	4				34	-10.5%
Wayne	2	3	1	3	4	6	6	7	1				33	10.0%
Yates	1	0	0	1	0	0	1	0	0				3	-62.5%
Out of County	0	0	0	0	0	0	0	0	0				0	
<b>2023 Totals</b>	<b>56</b>	<b>39</b>	<b>50</b>	<b>56</b>	<b>72</b>	<b>53</b>	<b>63</b>	<b>66</b>	<b>50</b>	<b>0</b>	<b>0</b>	<b>0</b>	<b>505</b>	<b>4.6%</b>

<b>WDNY Combined Totals</b>	<b>134</b>	<b>123</b>	<b>188</b>	<b>166</b>	<b>206</b>	<b>158</b>	<b>165</b>	<b>194</b>	<b>192</b>	<b>0</b>	<b>0</b>	<b>0</b>	<b>1,526</b>	<b>8.2%</b>
-----------------------------	------------	------------	------------	------------	------------	------------	------------	------------	------------	----------	----------	----------	--------------	-------------

U.S. Bankruptcy Court - Western District of New York

Historical Case Filing Report (All Chapters)

Month Ending September 30, 2023

Report #3

Page 1 of 2

		2014	% Change	2015	% Change	2016	% Change	2017	% Change	2018	% Change	2019	% Change	2020	% Change	2021	% Change	2022	% Change	2023
Jan.	Buffalo	242	-22.7%	188	-2.1%	184	11.4%	205	-8.3%	188	-8.5%	172	8.7%	187	-50.8%	92	-10.9%	82	-4.9%	78
	Rochester	134	-1.5%	131	-16.8%	109	-19.3%	88	13.6%	100	-2.0%	98	0.0%	98	-48.0%	51	-11.8%	45	24.4%	56
	WDNY Total Month	376	-15.2%	319	-8.2%	293	0.0%	293	-1.7%	288	-6.3%	270	5.6%	285	-49.8%	143	-11.2%	127	5.5%	134
	<b>WDNY Total YTD</b>	<b>376</b>	<b>-15.2%</b>	<b>319</b>	<b>-8.2%</b>	<b>293</b>	<b>0.0%</b>	<b>293</b>	<b>-1.7%</b>	<b>288</b>	<b>-6.3%</b>	<b>270</b>	<b>5.6%</b>	<b>285</b>	<b>-49.8%</b>	<b>143</b>	<b>-11.2%</b>	<b>127</b>	<b>5.5%</b>	<b>134</b>
Feb.	Buffalo	231	-20.3%	184	15.2%	212	-11.8%	187	-0.5%	186	9.1%	203	-23.6%	155	-34.2%	102	-8.8%	93	-9.7%	84
	Rochester	104	-28.8%	74	32.4%	98	8.2%	106	-10.4%	95	-8.4%	87	1.1%	88	-13.6%	76	-36.8%	48	-18.8%	39
	WDNY Total Month	335	-23.0%	258	20.2%	310	-5.5%	293	-4.1%	281	3.2%	290	-16.2%	243	-26.7%	178	-20.8%	141	-12.8%	123
	<b>WDNY Total YTD</b>	<b>711</b>	<b>-18.8%</b>	<b>577</b>	<b>4.5%</b>	<b>603</b>	<b>-2.8%</b>	<b>586</b>	<b>-2.9%</b>	<b>569</b>	<b>-1.6%</b>	<b>560</b>	<b>-5.7%</b>	<b>528</b>	<b>-39.2%</b>	<b>321</b>	<b>-16.5%</b>	<b>268</b>	<b>-4.1%</b>	<b>257</b>
Mar.	Buffalo	314	-4.5%	300	-15.0%	255	9.0%	278	-7.2%	258	6.6%	275	-21.8%	215	-29.8%	151	-12.6%	132	4.5%	138
	Rochester	172	-23.8%	131	13.7%	149	-2.7%	145	0.0%	145	-17.2%	120	-3.3%	116	-37.9%	72	-9.7%	65	-23.1%	50
	WDNY Total Month	486	-11.3%	431	-6.3%	404	4.7%	423	-4.7%	403	-2.0%	395	-16.2%	331	-32.6%	223	-11.7%	197	-4.6%	188
	<b>WDNY Total YTD</b>	<b>1,197</b>	<b>-15.8%</b>	<b>1,008</b>	<b>-0.1%</b>	<b>1,007</b>	<b>0.2%</b>	<b>1,009</b>	<b>-3.7%</b>	<b>972</b>	<b>-1.7%</b>	<b>955</b>	<b>-10.1%</b>	<b>859</b>	<b>-36.7%</b>	<b>544</b>	<b>-14.5%</b>	<b>465</b>	<b>-4.3%</b>	<b>445</b>
Apr.	Buffalo	328	-5.2%	311	-15.4%	263	-1.1%	260	0.8%	262	4.2%	273	-64.8%	96	40.6%	135	-11.9%	119	-7.6%	110
	Rochester	161	8.7%	175	-12.6%	153	-18.3%	125	14.4%	143	-2.8%	139	-60.4%	55	41.8%	78	-21.8%	61	-8.2%	56
	WDNY Total Month	489	-0.6%	486	-14.4%	416	-7.5%	385	5.2%	405	1.7%	412	-63.3%	151	41.1%	213	-15.5%	180	-7.8%	166
	<b>WDNY Total YTD</b>	<b>1,686</b>	<b>-11.4%</b>	<b>1,494</b>	<b>-4.8%</b>	<b>1,423</b>	<b>-2.0%</b>	<b>1,394</b>	<b>-1.2%</b>	<b>1,377</b>	<b>-0.7%</b>	<b>1,367</b>	<b>-26.1%</b>	<b>1,010</b>	<b>-25.0%</b>	<b>757</b>	<b>-14.8%</b>	<b>645</b>	<b>-5.3%</b>	<b>611</b>
May	Buffalo	285	0.7%	287	-15.3%	243	15.6%	281	-16.0%	236	11.9%	264	-53.0%	124	1.6%	126	-17.5%	104	28.8%	134
	Rochester	174	-18.4%	142	3.5%	147	-1.4%	145	-20.7%	115	7.8%	124	-46.0%	67	3.0%	69	-13.0%	60	20.0%	72
	WDNY Total Month	459	-6.5%	429	-9.1%	390	9.2%	426	-17.6%	351	10.5%	388	-50.8%	191	2.1%	195	-15.9%	164	25.6%	206
	<b>WDNY Total YTD</b>	<b>2,145</b>	<b>-10.3%</b>	<b>1,923</b>	<b>-5.7%</b>	<b>1,813</b>	<b>0.4%</b>	<b>1,820</b>	<b>-5.1%</b>	<b>1,728</b>	<b>1.6%</b>	<b>1,755</b>	<b>-31.6%</b>	<b>1,201</b>	<b>-20.7%</b>	<b>952</b>	<b>-15.0%</b>	<b>809</b>	<b>1.0%</b>	<b>817</b>
June	Buffalo	273	-12.5%	239	4.6%	250	-5.2%	237	-8.4%	217	-11.1%	193	-35.8%	124	-7.3%	115	0.9%	116	-9.5%	105
	Rochester	126	5.6%	133	3.8%	138	0.7%	139	-12.2%	122	-11.5%	108	-23.1%	83	-18.1%	68	-29.4%	48	10.4%	53
	WDNY Total Month	399	-6.8%	372	4.3%	388	-3.1%	376	-9.8%	339	-11.2%	301	-31.2%	207	-11.6%	183	-10.4%	164	-3.7%	158
	<b>WDNY Total YTD</b>	<b>2,544</b>	<b>-9.8%</b>	<b>2,295</b>	<b>-4.1%</b>	<b>2,201</b>	<b>-0.2%</b>	<b>2,196</b>	<b>-5.9%</b>	<b>2,067</b>	<b>-0.5%</b>	<b>2,056</b>	<b>-31.5%</b>	<b>1,408</b>	<b>-19.4%</b>	<b>1,135</b>	<b>-14.3%</b>	<b>973</b>	<b>0.2%</b>	<b>975</b>

U.S. Bankruptcy Court - Western District of New York  
 Historical Case Filing Report (All Chapters)  
 Month Ending September 30, 2023

		2014	% Change	2015	% Change	2016	% Change	2017	% Change	2018	% Change	2019	% Change	2020	% Change	2021	% Change	2022	% Change	2023
July	Buffalo	234	9.4%	257	-30.7%	178	34.8%	240	-11.7%	212	9.0%	231	-33.8%	153	-13.7%	132	-29.5%	93	9.7%	102
	Rochester	141	-2.8%	137	-21.9%	107	5.6%	113	-8.8%	103	11.7%	115	-18.3%	94	-27.7%	68	-29.4%	48	31.3%	63
	WDNY Total Month	375	4.8%	394	-27.7%	285	23.9%	353	-10.8%	315	9.8%	346	-28.6%	247	-19.0%	200	-29.5%	141	17.0%	165
	WDNY Total YTD	2,919	-7.9%	2,689	-7.5%	2,486	2.5%	2,549	-6.6%	2,382	0.8%	2,402	-31.1%	1,655	-19.3%	1,335	-16.6%	1,114	2.3%	1,140
Aug	Buffalo	233	-8.2%	214	9.8%	235	3.4%	243	-8.2%	223	-11.2%	198	-25.8%	147	-22.4%	114	-31.6%	78	64.1%	128
	Rochester	140	-10.7%	126	-12.7%	110	10.0%	121	3.3%	125	-12.0%	110	-32.7%	74	-20.3%	59	-18.6%	48	37.5%	66
	WDNY Total Month	373	-9.1%	340	1.5%	345	5.5%	364	-4.4%	348	-11.5%	308	-28.2%	221	-21.7%	173	-27.2%	126	54.0%	194
	WDNY Total YTD	3,292	-8.0%	3,029	-6.5%	2,831	2.9%	2,913	-6.3%	2,730	-0.7%	2,710	-30.8%	1,876	-19.6%	1,508	-17.8%	1,240	7.6%	1,334
Sep	Buffalo	284	0.0%	284	-18.3%	232	13.8%	264	12.9%	298	8.1%	322	-64.0%	116	-8.6%	106	3.8%	110	29.1%	142
	Rochester	135	-20.0%	108	6.5%	115	1.7%	117	-11.1%	104	1.9%	106	-32.1%	72	-19.4%	58	3.4%	60	-16.7%	50
	WDNY Total Month	419	-6.4%	392	-11.5%	347	9.8%	381	5.5%	402	6.5%	428	-56.1%	188	-12.8%	164	3.7%	170	12.9%	192
	WDNY Total YTD	3,711	-7.9%	3,421	-7.1%	3,178	3.7%	3,294	-4.9%	3,132	0.2%	3,138	-34.2%	2,064	-19.0%	1,672	-15.7%	1,410	8.2%	1,526
Oct	Buffalo	297	-11.8%	262	18.7%	311	-13.5%	269	21.6%	327	-18.3%	267	-50.9%	131	-34.4%	86	74.4%	150		
	Rochester	121	9.9%	133	-13.5%	115	3.5%	119	-2.5%	116	4.3%	121	-43.8%	68	-44.1%	38	55.3%	59		
	WDNY Total Month	418	-5.5%	395	7.8%	426	-8.9%	388	14.2%	443	-12.4%	388	-48.7%	199	-37.7%	124	68.5%	209		
	WDNY Total YTD	4,129	-7.6%	3,816	-5.6%	3,604	2.2%	3,682	-2.9%	3,575	-1.4%	3,526	-35.8%	2,263	-20.6%	1,796	-9.9%	1,619		
Nov	Buffalo	230	-7.4%	213	-15.0%	181	20.4%	218	-17.0%	181	6.1%	192	-44.8%	106	-16.0%	89	-1.1%	88		
	Rochester	127	0.0%	127	-1.6%	125	-4.0%	120	0.8%	121	-7.4%	112	-29.5%	79	-43.0%	45	24.4%	56		
	WDNY Total Month	357	-4.8%	340	-10.0%	306	10.5%	338	-10.7%	302	0.7%	304	-39.1%	185	-27.6%	134	7.5%	144		
	WDNY Total YTD	4,486	-7.4%	4,156	-5.9%	3,910	2.8%	4,020	-3.6%	3,877	-1.2%	3,830	-36.1%	2,448	-21.2%	1,930	-8.7%	1,763		
Dec	Buffalo	210	-10.5%	189	-23.8%	144	27.8%	184	-21.7%	144	18.1%	170	-29.4%	120	-42.5%	69	23.2%	85		
	Rochester	147	-45.6%	80	28.8%	103	-11.7%	91	5.5%	96	-24.0%	73	-19.2%	59	-22.0%	46	19.6%	55		
	WDNY Total Month	357	-24.9%	269	-8.2%	247	11.3%	275	-12.7%	240	1.3%	243	-26.3%	179	-35.8%	115	21.7%	140		
	WDNY Total YTD	4,843	-8.7%	4,425	-6.1%	4,157	3.3%	4,295	-4.1%	4,117	-1.1%	4,073	-35.5%	2,627	-22.2%	2,045	-6.9%	1,903		
		<b>2014</b>	<b>% Change</b>	<b>2015</b>	<b>% Change</b>	<b>2016</b>	<b>% Change</b>	<b>2017</b>	<b>% Change</b>	<b>2018</b>	<b>% Change</b>	<b>2019</b>	<b>% Change</b>	<b>2020</b>	<b>% Change</b>	<b>2021</b>	<b>% Change</b>	<b>2022</b>	<b>% Change</b>	<b>2023</b>
	<b>Buffalo Total</b>	3,161	-7.4%	2,928	-8.2%	2,688	6.6%	2,866	-4.7%	2,732	1.0%	2,760	-39.3%	1,674	-21.3%	1,317	-5.1%	1,250		
	<b>Rochester Total</b>	1,682	-11.0%	1,497	-1.9%	1,469	-2.7%	1,429	-3.1%	1,385	-5.2%	1,313	-27.4%	953	-23.6%	728	-10.3%	653		
	<b>WDNY Total</b>	4,843	-8.6%	4,425	-6.1%	4,157	3.3%	4,295	-4.1%	4,117	-1.1%	4,073	-35.5%	2,627	-22.2%	2,045	-6.9%	1,903		

		Chapter 7	Chapter 13	Chapter 11	Chapter 12/15	Cases Filed by Month	Cases Filed YTD	Adversary Cases				Case Closings		
								Pending Prior Month	New	Closed Current Month	Net Pending	Cases Closed 2022	Cases Closed 2023	% change
Jan.	Chief Judge Bucki	38	27	2	0	67	67	13	1	0	14	81	117	44.4%
	Judge Kaplan	0	0	0	0	0	0	18	0	0	18	15	1	-93.3%
	Judge Warren(Buffalo)	5	6	0	0	11	11	0	0	0	0	49	29	-40.8%
	Judge Warren(Rochester)	33	22	1	0	56	56	22	4	2	24	64	62	-3.1%
	Buffalo Total	43	33	2	0	78	78	31	1	0	32	145	147	1.4%
	Rochester Total	33	22	1	0	56	56	22	4	2	24	64	62	-3.1%
	<b>WDNY Total</b>	<b>76</b>	<b>55</b>	<b>3</b>	<b>0</b>	<b>134</b>	<b>134</b>	<b>53</b>	<b>5</b>	<b>2</b>	<b>56</b>	<b>209</b>	<b>209</b>	0.0%
Feb.	Chief Judge Bucki	41	20	0	0	61	128	14	0	2	12	86	78	-9.3%
	Judge Kaplan	0	0	0	0	0	0	18	0	0	18	14	0	-100.0%
	Judge Warren(Buffalo)	17	6	0	0	23	34	0	0	0	0	14	15	7.1%
	Judge Warren(Rochester)	23	15	1	0	39	95	24	0	3	21	36	55	52.8%
	Buffalo Total	58	26	0	0	84	162	32	0	2	30	114	93	-18.4%
	Rochester Total	23	15	1	0	39	95	24	0	3	21	36	55	52.8%
	<b>WDNY Total</b>	<b>81</b>	<b>41</b>	<b>1</b>	<b>0</b>	<b>123</b>	<b>257</b>	<b>56</b>	<b>0</b>	<b>5</b>	<b>51</b>	<b>150</b>	<b>148</b>	-1.3%
Mar.	Chief Judge Bucki	68	35	0	0	103	231	12	5	1	16	81	89	9.9%
	Judge Kaplan	0	0	0	0	0	0	18	0	1	17	8	1	-87.5%
	Judge Warren(Buffalo)	27	8	0	0	35	69	0	0	0	0	26	46	76.9%
	Judge Warren(Rochester)	36	14	0	0	50	145	21	5	5	21	101	80	-20.8%
	Buffalo Total	95	43	0	0	138	300	30	5	2	33	115	136	18.3%
	Rochester Total	36	14	0	0	50	145	21	5	5	21	101	80	-20.8%
	<b>WDNY Total</b>	<b>131</b>	<b>57</b>	<b>0</b>	<b>0</b>	<b>188</b>	<b>445</b>	<b>51</b>	<b>10</b>	<b>7</b>	<b>54</b>	<b>216</b>	<b>216</b>	0.0%
Apr.	Chief Judge Bucki	60	17	3	0	80	311	16	1	0	17	93	84	-9.7%
	Judge Kaplan	0	0	0	0	0	0	17	0	0	17	2	1	-50.0%
	Judge Warren(Buffalo)	20	10	0	0	30	99	0	0	0	0	24	16	-33.3%
	Judge Warren(Rochester)	42	14	0	0	56	201	21	1	2	20	74	61	-17.6%
	Buffalo Total	80	27	3	0	110	410	33	1	0	34	119	101	-15.1%
	Rochester Total	42	14	0	0	56	201	21	1	2	20	74	61	-17.6%
	<b>WDNY Total</b>	<b>122</b>	<b>41</b>	<b>3</b>	<b>0</b>	<b>166</b>	<b>611</b>	<b>54</b>	<b>2</b>	<b>2</b>	<b>54</b>	<b>193</b>	<b>162</b>	-16.1%



U.S. Bankruptcy Court - Western District of New York

Caseload by Judge, Division & District

Month Ending September 30, 2023

Report # 4

Page 2 of 3

		Chapter 7	Chapter 13	Chapter 11	Chapter 12/15	Cases Filed by Month	Cases Filed YTD	Adversary Cases				Case Closings		
								Pending Prior Month	New	Closed Current Month	Net Pending	Cases Closed 2022	Cases Closed 2023	% change
May	Chief Judge Bucki	69	31	0	0	100	411	17	1	1	17	91	107	17.6%
	Judge Kaplan	0	0	0	0	0	0	17	0	0	17	1	0	-100.0%
	Judge Warren(Buffalo)	25	9	0	0	34	133	0	0	0	0	34	32	-5.9%
	Judge Warren(Rochester)	51	19	2	0	72	273	20	0	5	15	42	69	64.3%
	Buffalo Total	94	40	0	0	134	544	34	1	1	34	126	139	10.3%
	Rochester Total	51	19	2	0	72	273	20	0	5	15	42	69	64.3%
	<b>WDNY Total</b>	<b>145</b>	<b>59</b>	<b>2</b>	<b>0</b>	<b>206</b>	<b>817</b>	<b>54</b>	<b>1</b>	<b>6</b>	<b>49</b>	<b>168</b>	<b>208</b>	23.8%
June	Chief Judge Bucki	47	26	1	0	74	485	17	0	1	16	57	63	10.5%
	Judge Kaplan	0	0	0	0	0	0	17	0	0	17	1	0	-100.0%
	Judge Warren(Buffalo)	20	11	0	0	31	164	0	0	0	0	19	22	15.8%
	Judge Warren(Rochester)	34	18	1	0	53	326	15	0	1	14	63	50	-20.6%
	Buffalo Total	67	37	1	0	105	649	34	0	1	33	77	85	10.4%
	Rochester Total	34	18	1	0	53	326	15	0	1	14	63	50	-20.6%
	<b>WDNY Total</b>	<b>101</b>	<b>55</b>	<b>2</b>	<b>0</b>	<b>158</b>	<b>975</b>	<b>49</b>	<b>0</b>	<b>2</b>	<b>47</b>	<b>140</b>	<b>135</b>	-3.6%
July	Chief Judge Bucki	48	22	1	0	71	556	16	0	2	14	100	88	-12.0%
	Judge Kaplan	0	0	0	0	0	0	17	0	0	17	3	0	-100.0%
	Judge Warren(Buffalo)	22	9	0	0	31	195	0	0	0	0	42	11	-73.8%
	Judge Warren(Rochester)	44	19	0	0	63	389	14	1	4	11	83	33	-60.2%
	Buffalo Total	70	31	1	0	102	751	33	0	2	31	145	99	-31.7%
	Rochester Total	44	19	0	0	63	389	14	1	4	11	83	33	-60.2%
	<b>WDNY Total</b>	<b>114</b>	<b>50</b>	<b>1</b>	<b>0</b>	<b>165</b>	<b>1,140</b>	<b>47</b>	<b>1</b>	<b>6</b>	<b>42</b>	<b>228</b>	<b>132</b>	-42.1%
Aug.	Chief Judge Bucki	65	36	2	0	103	659	14	0	0	14	134	144	7.5%
	Judge Kaplan	0	0	0	0	0	0	17	0	0	17	4	1	-75.0%
	Judge Warren (Buffalo)	16	9	0	0	25	220	0	0	0	0	13	37	184.6%
	Judge Warren (Rochester)	46	20	0	0	66	455	11	1	2	10	73	95	30.1%
	Buffalo Total	81	45	2	0	128	879	31	0	0	31	151	182	20.5%
	Rochester Total	46	20	0	0	66	455	11	1	2	10	73	95	30.1%
	<b>WDNY Total</b>	<b>127</b>	<b>65</b>	<b>2</b>	<b>0</b>	<b>194</b>	<b>1,334</b>	<b>42</b>	<b>1</b>	<b>2</b>	<b>41</b>	<b>224</b>	<b>277</b>	23.7%

U.S. Bankruptcy Court - Western District of New York

Caseload by Judge, Division & District

Month Ending September 30, 2023

Report #4

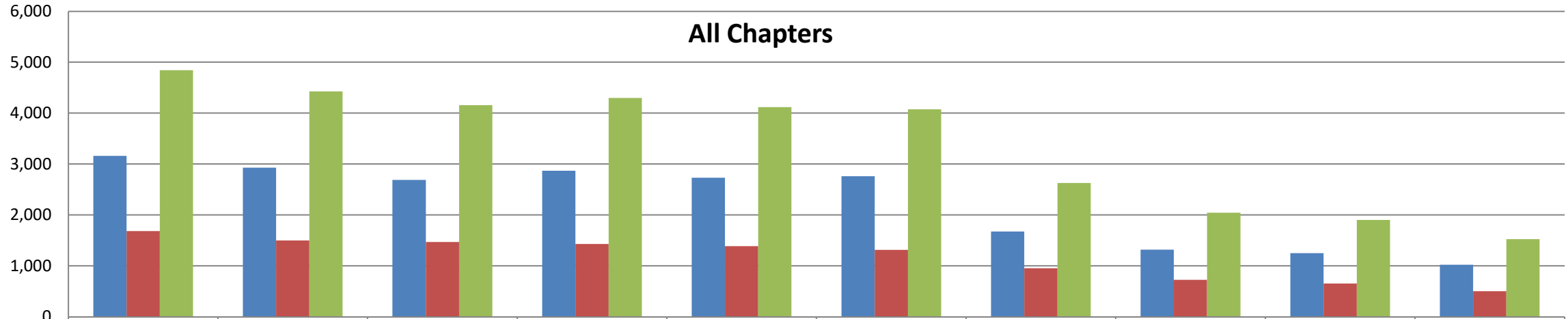
Page 3 of 3

		Chapter 7	Chapter 13	Chapter 11	Chapter 12/15	Cases Filed by Month	Cases Filed YTD	Adversary Cases				Case Closings		
								Pending Prior Month	New	Closed Current Month	Net Pending	Cases Closed 2022	Cases Closed 2023	% change
Sep.	Chief Judge Bucki	55	72	5	0	132	791	14	1	0	15	54	75	38.9%
	Judge Kaplan	0	0	0	0	0	0	17	0	0	17	2	0	-100.0%
	Judge Warren(Buffalo)	6	4	0	0	10	230	0	0	0	0	42	36	-14.3%
	Judge Warren(Rochester)	27	22	1	0	50	505	10	1	0	11	57	79	38.6%
	Buffalo Total	61	76	5	0	142	1,021	31	1	0	32	98	111	13.3%
	Rochester Total	27	22	1	0	50	505	10	1	0	11	57	79	38.6%
	<b>WDNY Total</b>	<b>88</b>	<b>98</b>	<b>6</b>	<b>0</b>	<b>192</b>	<b>1,526</b>	<b>41</b>	<b>2</b>	<b>0</b>	<b>43</b>	<b>155</b>	<b>190</b>	22.6%

Year to Date	Chapter 7	Chapter 13	Chapter 11	Chapter 12 & 15	YTD Totals All Chapters	Adversary Cases YTD			Case Closings YTD		
						New	Closed	Net Pending	Cases Closed 2022	Cases Closed 2023	% change
Chief Judge Bucki YTD	491	286	14	0	791	9	7	15	777	845	8.8%
Judge Kaplan YTD	0	0	0	0	0	0	1	17	50	4	-92.0%
Judge Warren (Buff & Roch) YTD	494	235	6	0	735	13	24	11	856	828	-3.3%
Judge Warren (Buffalo) YTD	158	72	0	0	230	0	0	0	263	244	-7.2%
Judge Warren (Rochester) YTD	336	163	6	0	505	13	24	11	593	584	-1.5%
<b>Buffalo Total YTD</b>	<b>649</b>	<b>358</b>	<b>14</b>	<b>0</b>	<b>1,021</b>	<b>9</b>	<b>8</b>	<b>32</b>	<b>1,090</b>	<b>1,093</b>	0.3%
<b>Rochester Total YTD</b>	<b>336</b>	<b>163</b>	<b>6</b>	<b>0</b>	<b>505</b>	<b>13</b>	<b>24</b>	<b>11</b>	<b>593</b>	<b>584</b>	-1.5%
<b>WDNY Totals YTD</b>	<b>985</b>	<b>521</b>	<b>20</b>	<b>0</b>	<b>1,526</b>	<b>22</b>	<b>32</b>	<b>43</b>	<b>1,683</b>	<b>1,677</b>	-0.4%

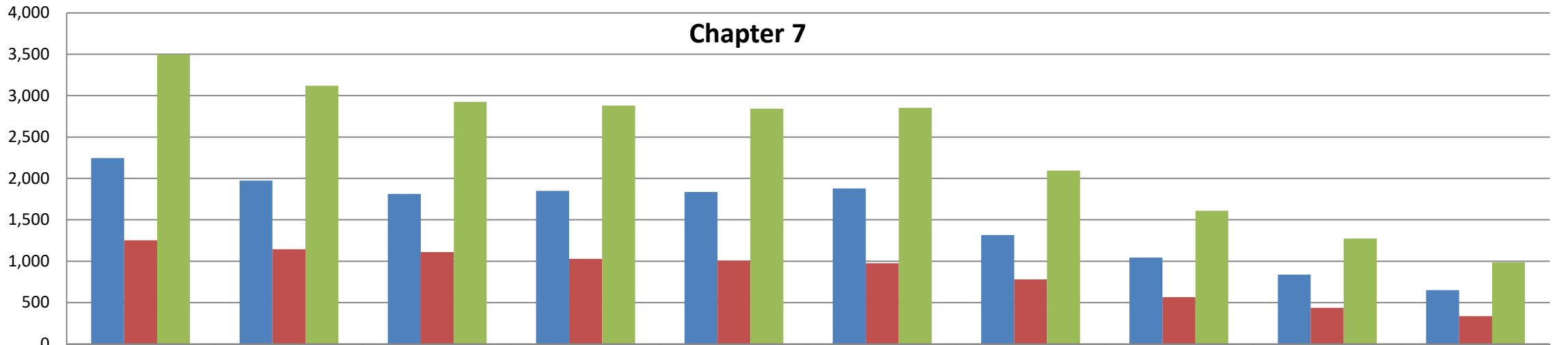


### All Chapters



	2014	2015	2016	2017	2018	2019	2020	2021	2022	2023
■ Buffalo	3,161	2,928	2,688	2,866	2,732	2,760	1,674	1,317	1,250	1,021
■ Rochester	1,682	1,497	1,469	1,429	1,385	1,313	953	728	653	505
■ WDNY Total	4,843	4,425	4,157	4,295	4,117	4,073	2,627	2,045	1,903	1,526

### Chapter 7



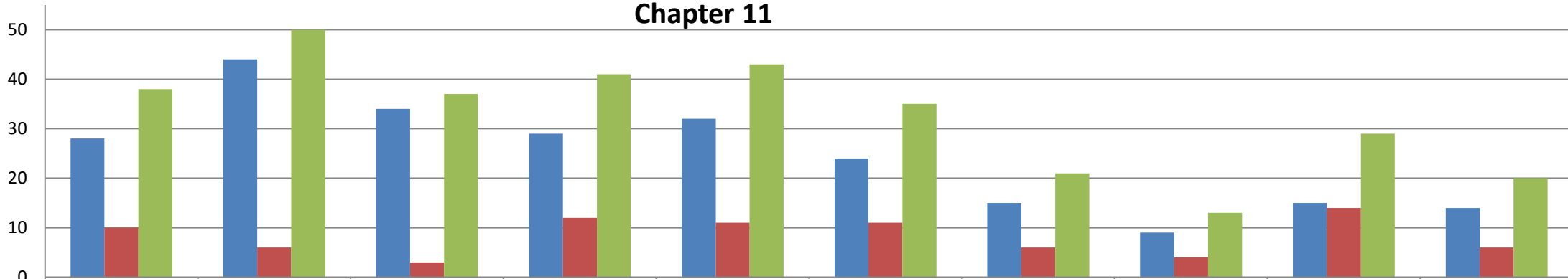
	2014	2015	2016	2017	2018	2019	2020	2021	2022	2023
■ Buffalo	2,246	1,974	1,813	1,849	1,835	1,877	1,315	1,043	838	649
■ Rochester	1,252	1,145	1,110	1,029	1,007	975	780	567	436	336
■ WDNY Total	3,498	3,119	2,923	2,878	2,842	2,852	2,095	1,610	1,274	985

### Chapter 13 (includes Chapter 12 & 15)



	2014	2015	2016	2017	2018	2019	2020	2021	2022	2023
Buffalo	887	909	841	988	865	859	344	265	397	358
Rochester	420	347	356	388	367	327	167	157	203	163
WDNY Totals	1,307	1,256	1,197	1,376	1,232	1,186	511	422	600	521

### Chapter 11



	2014	2015	2016	2017	2018	2019	2020	2021	2022	2023
Buffalo	28	44	34	29	32	24	15	9	15	14
Rochester	10	6	3	12	11	11	6	4	14	6
WDNY Totals	38	50	37	41	43	35	21	13	29	20